

Cylinders

Europrofile Type and Escutcheons

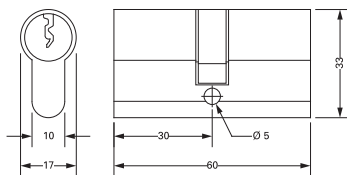
The Adams Rite Europrofile cylinders are designed to compliment the Adams Rite range of Euro Deadlatches and High Security Deadlocks.



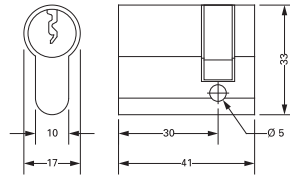
Key Benefits

- Suitable for use on aluminium, timber and steel doors.
- To prevent cylinders from being forced through the lockcase the cam sits at 30° off-centre thereby overlapping the side plate of the lockcase.
- Supplied with 3 keys as standard.
- Keyed alike in pairs and sets available.
- Range of escutheons to compliment

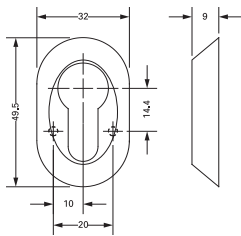
Dimensions



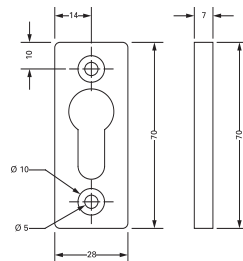
Sofi Europrofile Cylinder



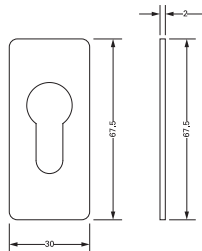
Sofi Half Europrofile Cylinder



60-33-17-630 Escutcheon



1755PZ Escutcheon



Self-Adhesive Escutcheon

Specifications

Europrofile Cylinders

Overall Sizes: 33mm x 17mm x 60mm (Dual Profile)
33mm x 17mm x 41mm (Half Profile).

Diameter: 17mm.

Material: Brass (Nickel plated).

Keys: Nickel Silver, 3 supplied.

Keying: Key different only

Escutcheons

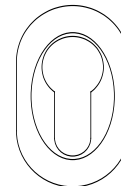
Size: 49.5mm x 32mm x 9mm (60-33-17-630)

70mm x 28mm x 7mm (1755PZ)

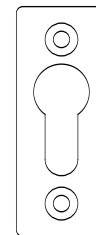
67.5mm x 30mm x 2mm (Self-Adhesive).



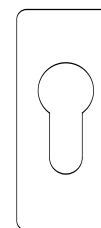
Sofi Europrofile Cylinder



60-33-17-630 Escutcheon



1755PZ Escutcheon



Self-Adhesive Escutcheon

Ordering Codes

61-00

61-00-30-0-1

61-30-30-0-1

60-33-17-630

1755PZ

601-000

601-140

601-335

601-628

Key Blanks

Half Profile Cylinder KD

Cylinder KD

Cylinder Escutcheon for 17mm Europrofile Cylinder

Face Fix Escutcheon Screw On SAA

Euro Profile Escutcheon Mill Finish

Euro Profile Self Adhesive Escutcheon White

Euro Profile Self Adhesive Escutcheon Black

Euro Profile Self Adhesive Escutcheon Black SAA

Note: The order code table lists the most popular variations; for additional models and finishes contact the Adams Rite Customer Services Department.

Cylinders

Adams Rite offer a comprehensive kitemarked cylinder range including thumbturn, single and double profile cylinders.



BS EN 1303:2005
KM 532920



Euro Thumbturn



Cylinder section

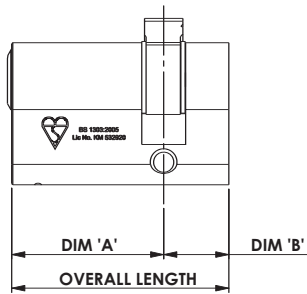
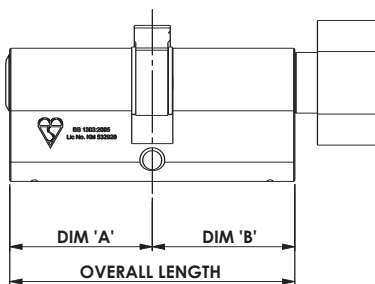
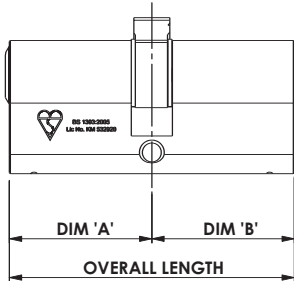
Key Benefits

- Product has been independently tested and meets the British standard BS EN 1303 : 2005
- Bump Resistant
- Anti Pick
- Anti Snap (when used with Sentinel™ Escutcheon)

- | | | | | | | | |
|---|---|---|---|---|---|---|----|
| 1 | 6 | 0 | 1 | 0 | C | 6 | 2* |
|---|---|---|---|---|---|---|----|
- *Complies when used with Sentinel™ Escutcheon
- Supplied with 3 keys
- Key security grade 6
- Available in a variety of sizes
- Available in keyed alike sets up to 50

Note: 1/2 profile version not suitable for use with 4750 deadlatch when a 4596 paddle is fitted.

Dimensions



Ordering Codes

CYLINDER CODE	OVERALL LENGTH	DIM 'A'	DIM 'B'
CL1-ED3535-SC-KD	70	35	35
CL1-ED3535-SC-KAX	70	35	35
CL1-ED3535-SC-KA2	70	35	35
CL1-ED4535-SC-KD	80	45	35

CYLINDER CODE	OVERALL LENGTH	DIM 'A'	DIM 'B'
CL1-ET3535-SC-KD	70	35	35
CL1-ET3535-SC-KAX	70	35	35
CL1-ET3535-SC-KA2	70	35	35

CYLINDER CODE	OVERALL LENGTH	DIM 'A'	DIM 'B'
CL1-ES3515-SC-KD	50	35	15
CL1-ES3515-SC-KAX	50	35	15
CL1-ES3515-SC-KA2	50	35	15
CL1-ES3515-SC-KD	50	35	15
CL1-ES5015-SC-KD	65	50	15

Note: Current sizes stocked, for alternative sizes contact customer services.

How to Order

Version	Type	NN	NN	Finish	Keying
CL1 Kitemark Cylinder	KB Key Blanks	<i>Distance from centre of cam</i>		SC Satin Chrome	KD Key Different
	ES Euro Single	15	15mm (ES only)		KA2 Keyed alike in pairs
	ED Euro Double	35	35mm		KAX Keyes alike in sets
	ET Euro Turn	40	40mm		
		45	45mm		
		50	50mm		

Note: specify size of turn or single in first set of digits

Examples	
CL1-KB	Adams Rite Kitemark cylinder key blanks
CL1-ES3515-SC-KA2	Adams Rite Kitemark cylinder Euro Single, key 35mm, Satin Chrome finish, Keyed alike in pairs
CL1-ED3535-SC-KD	Adams Rite Kitemark cylinder Euro Double, key 35mm, key 35mm, Satin Chrome finish, Key different
CL1-ET3535-SC-KAX	Adams Rite Kitemark cylinder Euro Thumbturn, turn 35mm, key 35mm, Satin Chrome finish, Key alike in sets

MS[®] 4043

Cylinder Guard

The Adams Rite MS[®] 4043 Cylinder guard offers three forms of defence against somebody trying to prise a standard mortice cylinder out of the door.



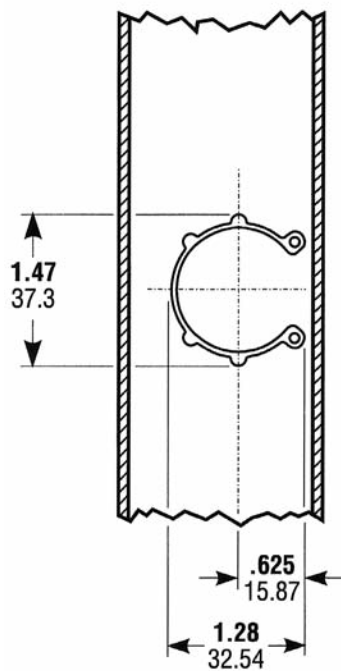
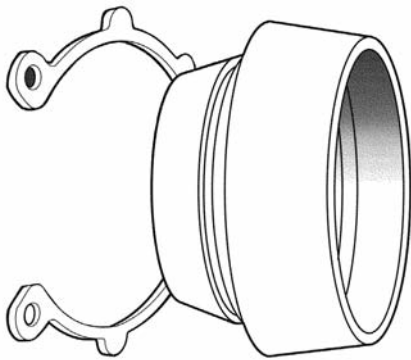
Key Benefits

- Suitable for use on aluminium and steel doors.
- Outer shield ring is fully bevelled to offer poor grip for prying or twisting.
- If a tool such as a cold chisel is driven into the stile behind the shield ring, the cylinder is still protected by the retainer plate, which would have to be pulled through a round hole in the metal door stile. This degree of leverage would be impossible with most hand tools.
- As a standard mortice cylinder is made of brass, it is a potential weak point in narrow stile door security.
- The ring is manufactured from hardened steel, and coupled with its shape makes gripping the ring tightly virtually impossible.
- The MS[®] 4043 may be used on outside only or on both outside and inside of a double-cylinder lock.
- Security ring, zinc-plated hardened steel.

Related Hardware

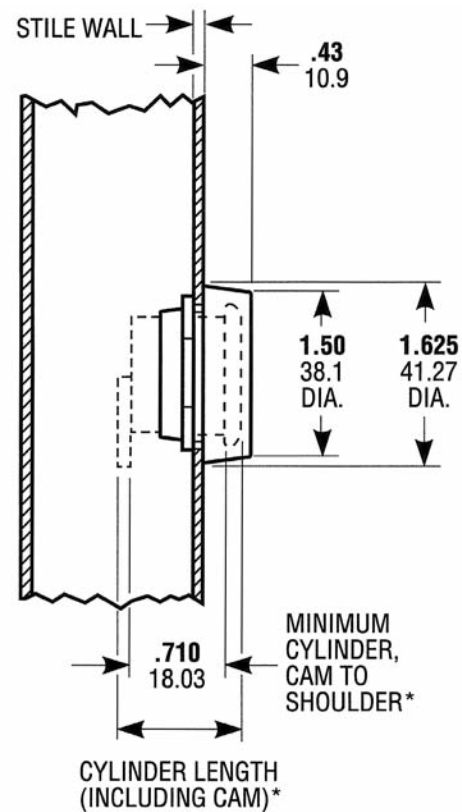
Round Cylinders

Dimensions



Specifications

Security Ring:	Zinc-plated hardened steel. Free swivelling.
Retainer Plate:	Steel with corrosion resistant plating.
Stile Thickness:	3.2mm.
Spacers:	Supplied. To fit stile wall if thinner than 3.2mm.
Spreader Wrench:	Supplied. For fitting retainer plate.



*Contact factory regarding non-standard dimensions.

Ordering Codes

4043-00-602 MS®4043 Cylinder Guard c/w Retainer Plate

Cylinders

Round Mortice Type

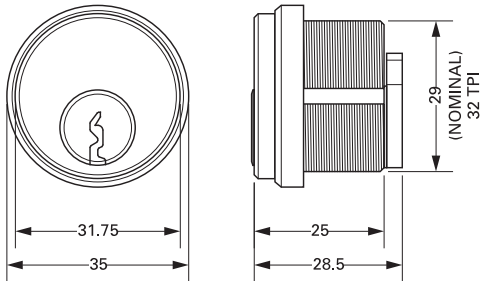
Adams Rite offers a range of cylinders to suit round screw in locks. Each system offers the flexibility to provide a solution for applications of most standard sizes including thumbturn variants.



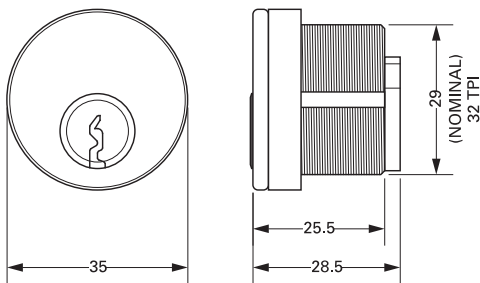
Key Benefits

- Suitable for use on aluminium, timber and steel doors.
- With MS® cam fitted.
- 3 keys supplied with each cylinder.
- Keyed alike in pairs and sets available.
- Supplied with 6mm trim ring as standard.
- Version with no keyway available.

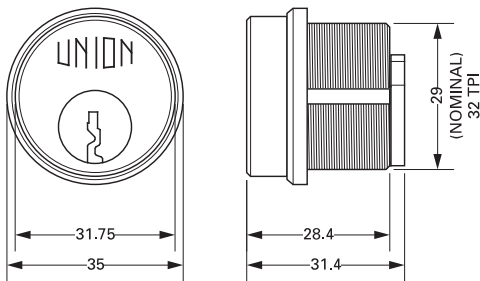
Dimensions



AREL (4056) Mortise Cylinder



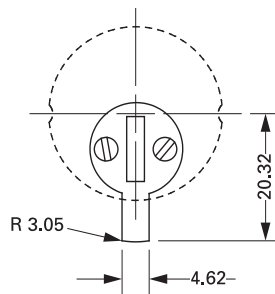
4036 Mortise Cylinder



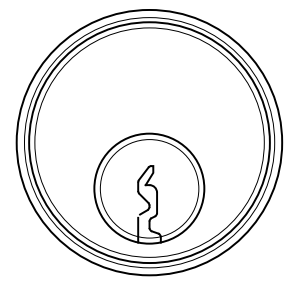
Union (4044) Mortise Cylinder

Specifications

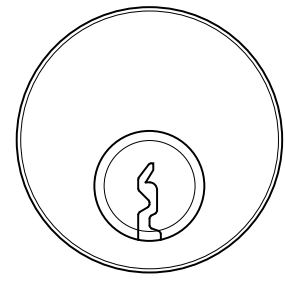
Overall Sizes:	35mm x 35mm x 28.5mm (AREL/4056) 35mm x 35mm x 28.5mm (4036) 35mm x 35mm x 31.4mm (Union/4044)
Diameter:	29mm, 32 TPI.
Material:	Brass.
Keys:	Nickel Silver, 2 supplied.
Keying:	Various; to differ, to pass or suited with other cylinders utilizing the same size keyway.



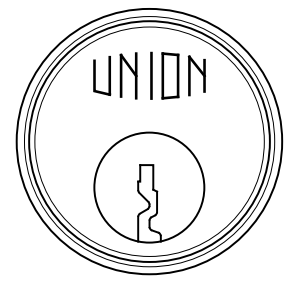
Note: All round mortise cylinder lockcases are operable by any standard 1 5/32" diameter mortise cylinder with special MS® cam dimensioned as shown here. Cam Tolerance: ±0.13mm.



AREL (4056)



4036



Union (4044)

Ordering Codes

4056-000	Key Blank to suit 4056 Cylinder
4056-3	3mm Trim Ring to suit 4056 Cylinder
4056-6	6mm Trim Ring to suit 4056 Cylinder
4056-61-00-626	AREL Mortise Cylinder Blank (c/w 6mm Trim Ring)
4056-61-01-626	AREL Mortise Cylinder KD Satin Chrome
4056-61-02-626	AREL Mortise Cylinder KA2 Satin Chrome
4056-61-626-xx	AREL Mortise Cylinder KA Satin Chrome
4036-001	Key Blank to suit 4036 Cylinder
4036-61-01-628	Mortise Cylinder KD SAA
4036-61-02-628	Mortise Cylinder KA2 SAA
4036-61-628-xx	Mortise Cylinder KA SAA
4044-000	Key Blank to suit Union 2x11 Cylinder
4044-41-01-626	Union Cylinder KD Satin Chrome
4044-41-02-626	Union Cylinder KA2 Satin Chrome

Note: The ordering code table lists the most popular variations; for additional models contact the Customer Service Department.