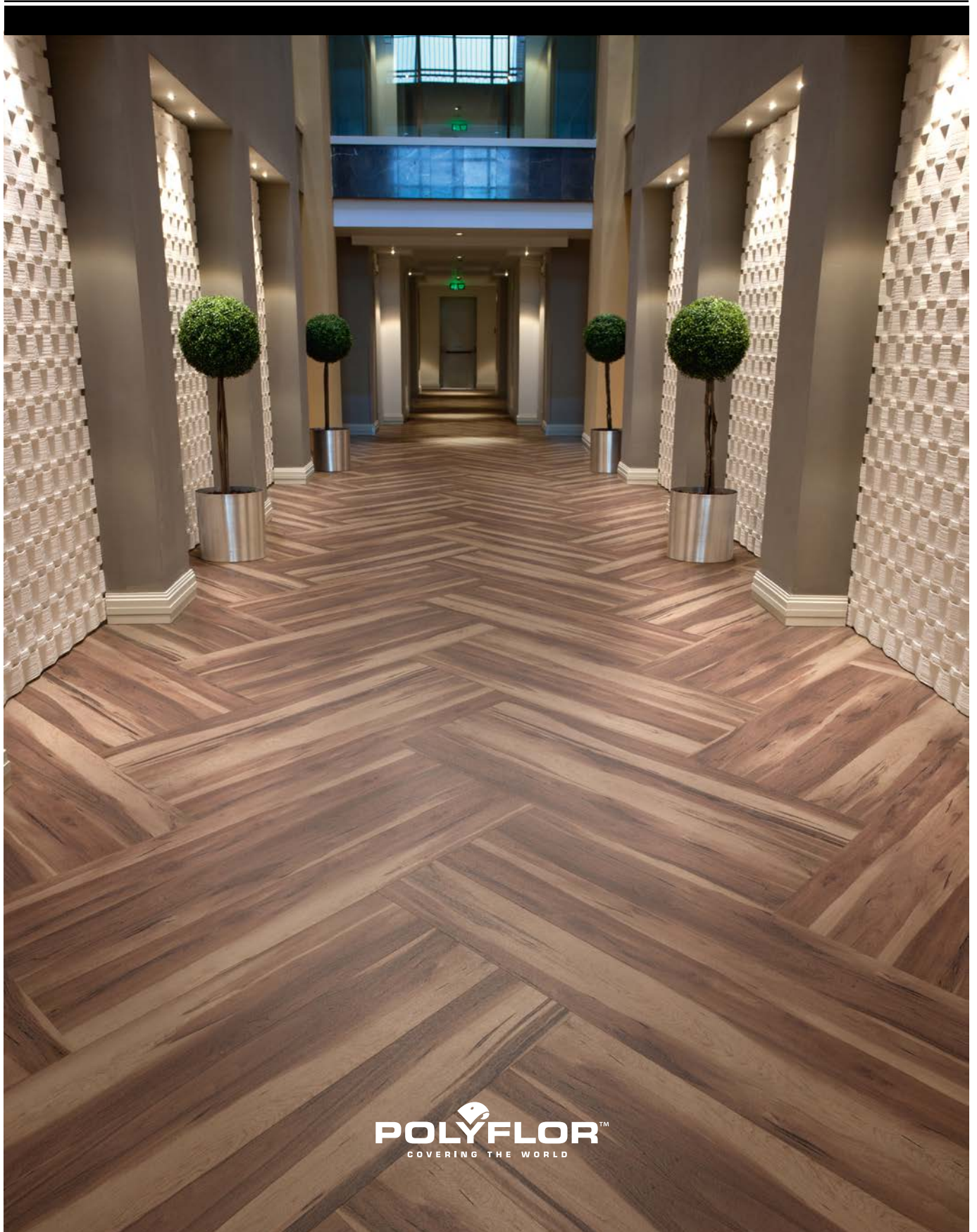


Affinity2⁵⁵TM

Beauty & performance come together





Affinity2⁵⁵™

Beauty & performance come together

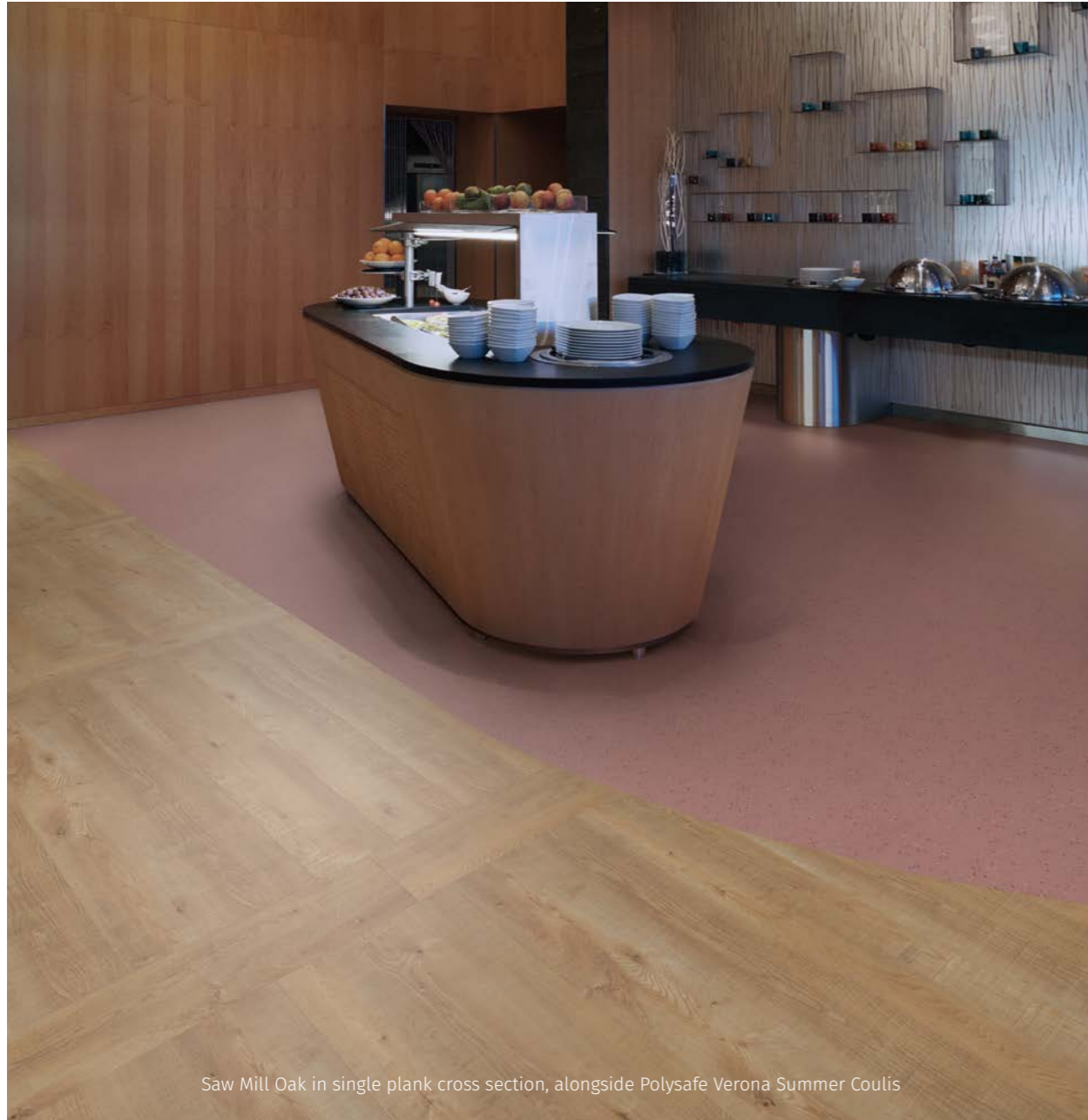
Innovation Perfected

A beautifully engineered collection of high design luxury vinyl tiles developed for heavy traffic environments, *Affinity2⁵⁵* is an eclectic mix of authentically reproduced wood plank designs, incorporating contemporary and recycled timber patterns. Skillfully replicating the natural variations found within solid wood, through the use of tonal hues and surface textures, each of *Affinity2⁵⁵*'s designs have been developed to suit an array of different interior schemes and come in a single, wide plank format.

The innovative new 2mm gauge allows *Affinity2⁵⁵* to be installed alongside 2mm vinyl sheet flooring, providing a seamless flooring solution that flows throughout any commercial installation.

High design meets functionality

Introducing the latest innovation in luxury vinyl tiles, *Affinity2⁵⁵* has been developed to work alongside 2mm vinyl sheet flooring within heavy commercial interiors. This creates a flooring solution that bridges different zones within a building from entrances to exits without compromising on style and durability.



Saw Mill Oak in single plank cross section, alongside Polysafe Verona Summer Coulis

Dual Purpose Areas

For larger dual purpose rooms where different flooring types are required for different purposes, for instance in a self-service restaurant, a standard 2mm safety vinyl sheet floor can be installed around the food serving area where there is an increased risk of spillages, which blends seamlessly with *Affinity2⁵⁵* as the high design floor leads diners towards the seating area.



Smoked Walnut straight laid, alongside Pearlazzo Truffle

Flowing Pathways

Creating smooth and clear pathways through a building from the main entrance to the back door can be aided by the use of an unbroken flooring solution. In rooms that require vinyl sheet flooring for hygiene reasons like hospital wards, *Affinity2⁵⁵* can be laid in any high-traffic areas that meet those rooms such as corridors and reception areas without the need for levelling door trims.

Aspen Pine



Straight laid

The contrast between the warm, natural wood grain and the fresh white painted effect in each Aspen Pine plank adds movement and gives this traditional wood species a contemporary finish.



9870

Plank size 184.2 x 1219.2mm



Straight laid

Cracked White Oak



Straight laid, alongside Seasoned Grey Oak

This unique aged oak plank design is versatile and functional, ideal for interiors seeking a rustic effect. Warm peach undertones offset the cracked surface design and texture for an authentic appearance.



9871

Plank size 184.2 x 1219.2mm



Full plank herringbone design

Planed White Oak



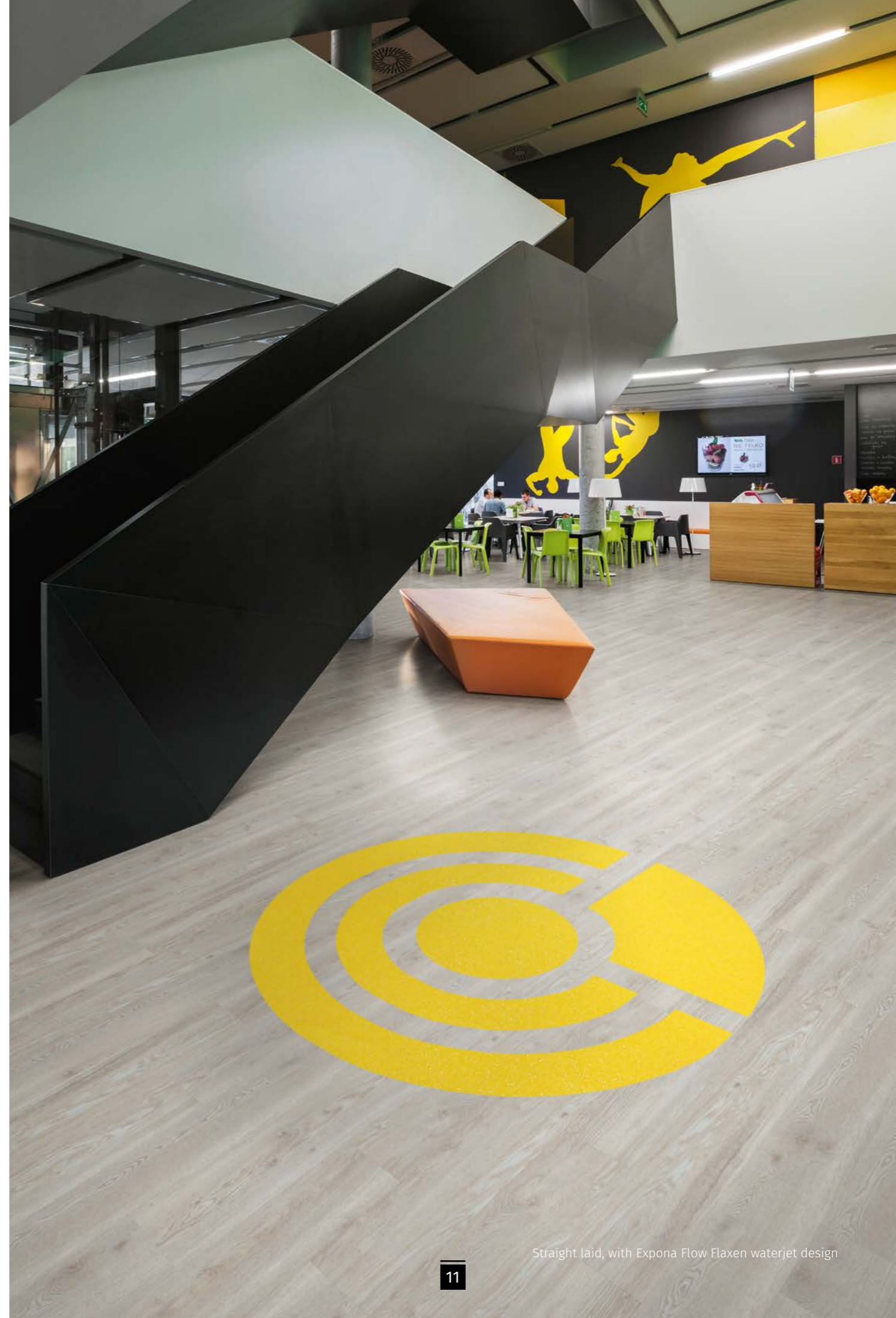
Straight laid

White woods have continued to grow in popularity, becoming a feature within many trend setting commercial interiors. The smooth finish creates a clean, attractive floor that complements a variety of décors.



9872

Plank size 184.2 x 1219.2mm



Straight laid, with Expona Flow Flaxen waterjet design

French Limed Oak



Straight laid

The understated, smooth finish of French Limed Oak with its fluid grain and delicate beige tones is effortlessly elegant. A fantastic addition to the *Affinity2⁵⁵* collection, this floorcovering is engaging without being imposing.



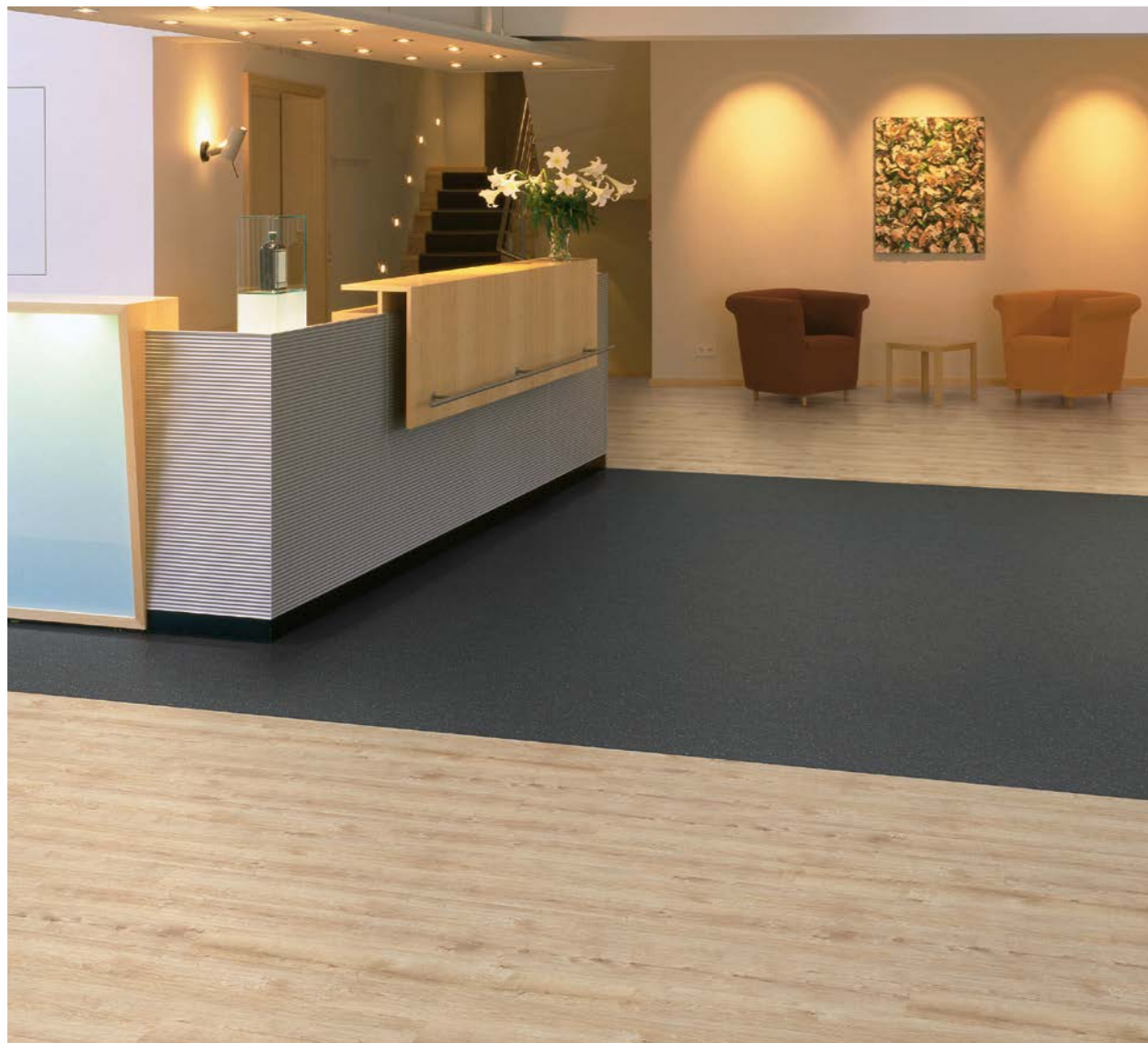
9873

Plank size 184.2 x 1219.2mm



Straight laid, inlaid with Hazel Oak

Champagne Oak



Straight laid, alongside Pearlazzo Charcoal

Natural oak planks remain the number one choice for commercial interiors around the globe, due to their neutral yet timeless beauty. Champagne Oak is ideal for creating an inviting space where first impressions count.



9874

Plank size 184.2 x 1219.2mm



Dappled Oak



Straight laid

Encompassing tan and honey tones in a smooth, oak plank pattern, Dappled Oak will enhance any commercial interior from entrances and boutique cafés, to healthcare installations and retail stores.



9875

Plank size 184.2 x 1219.2mm





Harvest Oak



Straight laid, with Polysafe Verona Skyline installed in treatment rooms

As the name suggests, Harvest Oak incorporates all the colours of autumn throughout its design making it versatile for use in both traditional and modern interiors, and is ideal for creating striking design floors like parquet.



9876

Plank size 184.2 x 1219.2mm



Third length plank herringbone design

Saw Mill Oak



Inlaid with Classic Oak Marquetry Strip

With its lively character and authentic surface texture, Saw Mill Oak is a striking choice that compliments industrial interior decors for a natural reclaimed look.



9877

Plank size 184.2 x 1219.2mm



Cross Sawn Timber



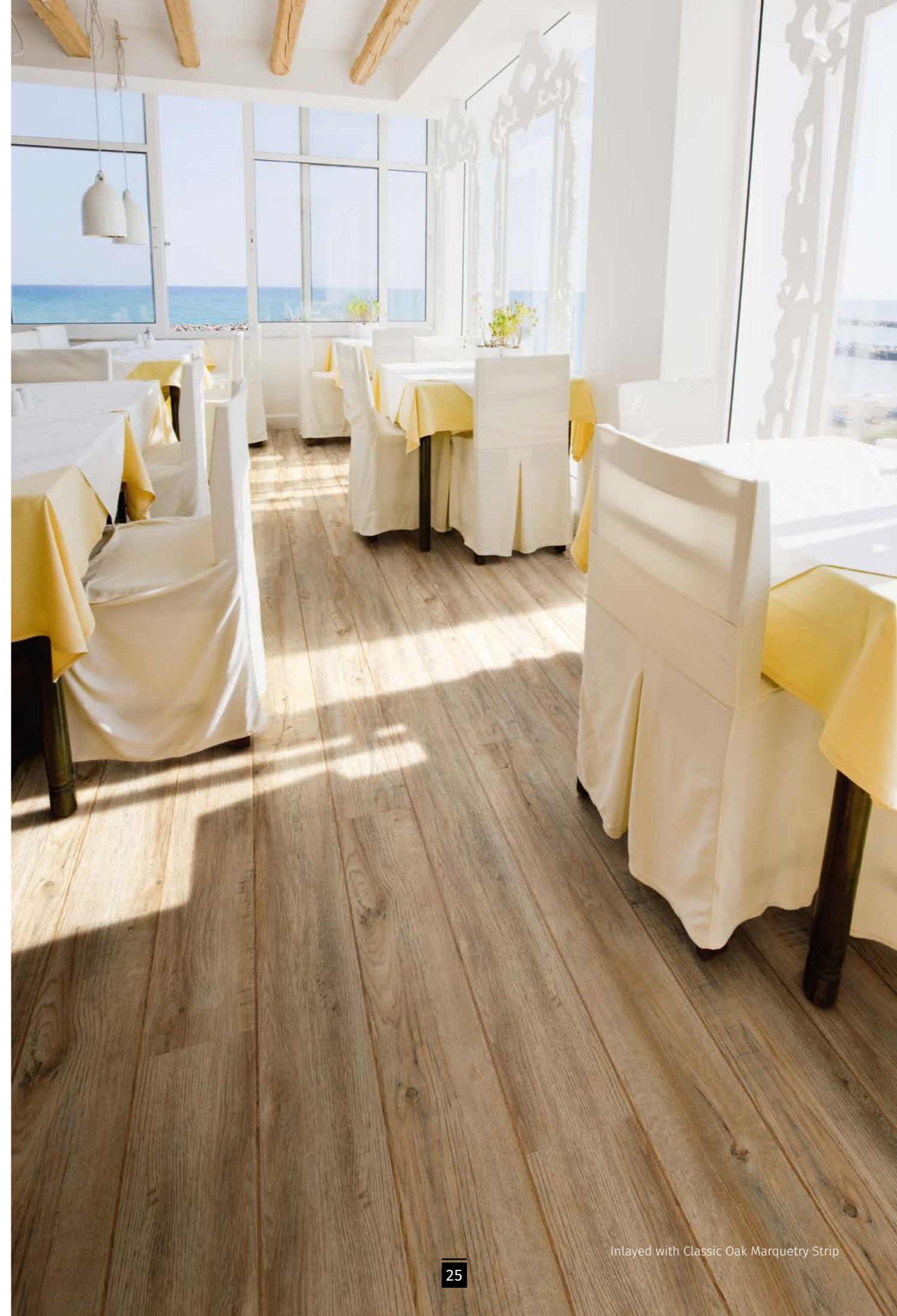
Double plank cross section

Cross Sawn Timber creates an aged, recycled effect with its varied grain detail, rustic surface and authentic dark markings. Try installing planks in a ships decking layout using *Affinity2⁵⁵* inlay strips for greater emphasis.



9878

Plank size 184.2 x 1219.2mm



Hazel Oak



Straight laid

The earthy auburn grain tones in Hazel Oak create a welcoming effect, making it the logical choice for any interior that requires a comforting familiarity.



9879

Plank size 184.2 x 1219.2mm



Straight laid

Smoked Walnut



Straight laid

This traditional dark wood features heavy grains, strong colours and attractive markings, ideal for interiors that require a floorcovering with a lot of character. The warm markings and dark brown tones create a strong base for complementary wallcoverings and furnishings.



9880

Plank size 184.2 x 1219.2mm



Straight laid

Flamed Chestnut



Double plank weave

Though bold in design with dominant knots, the inclusion of soft yellows, oranges and pale taupe shades within each Flamed Chestnut plank creates a comforting look that works beautifully laid in a design floor.



9881

Plank size 184.2 x 1219.2mm



Huckleberry Oak



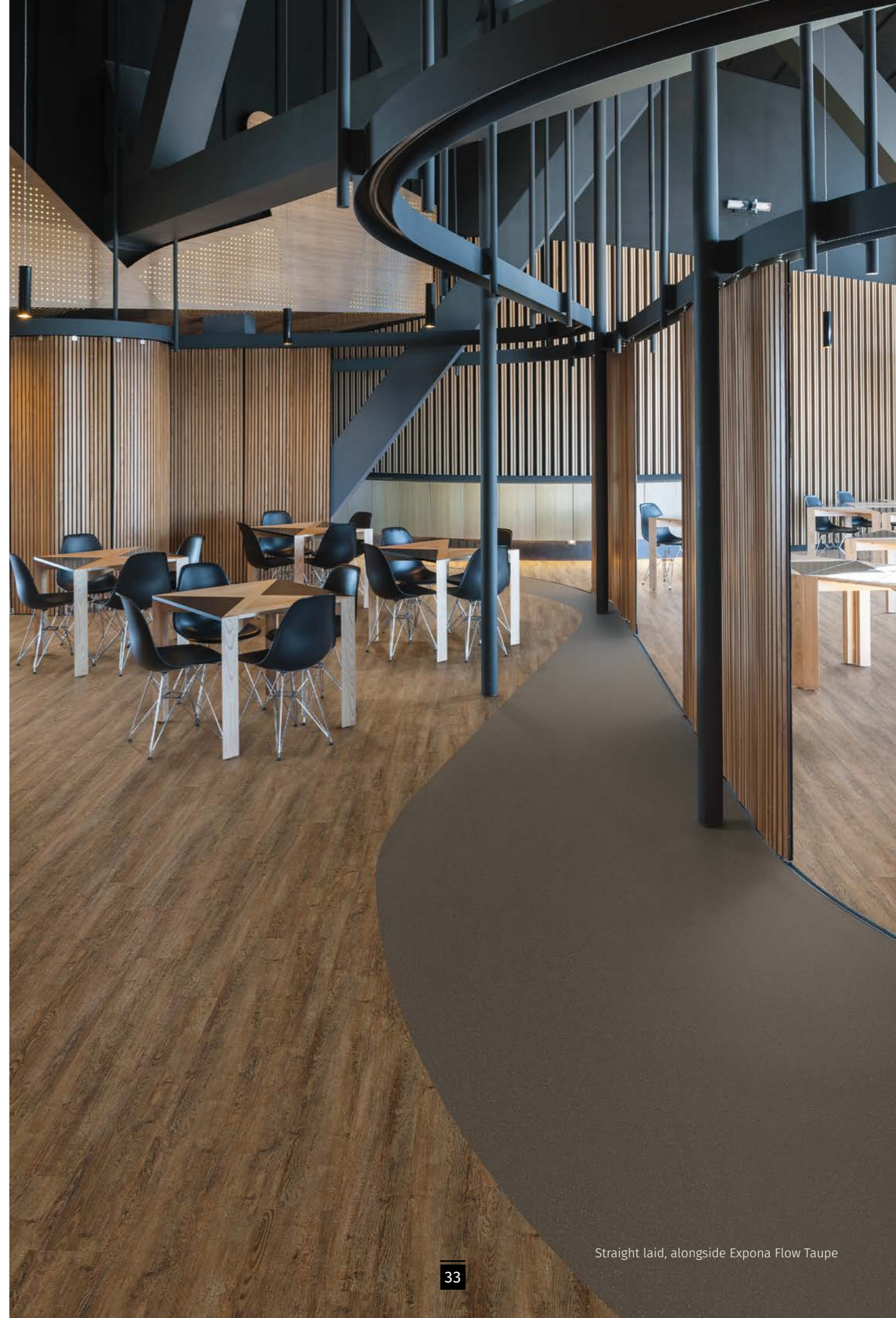
Straight laid

The intense grain detailing and surface texture of Huckleberry Oak coupled with rich hues, come together to create a look that evokes emotion and captures the natural unpredictability of wood planks.



9882

Plank size 184.2 x 1219.2mm



Straight laid, alongside Expona Flow Taupe

Reclaimed Pine



Straight laid

The striking knots and subtle silver detailing within each plank of Reclaimed Pine is ideal for large open areas. Laid in a traditional herringbone design, typical of older reclaimed wood planks, the bold mix of cool and warm tones creates an eye-catching finish.



9883

Plank size 184.2 x 1219.2mm



Full plank herringbone design, and Expona Flow Storm

Seasoned Grey Oak



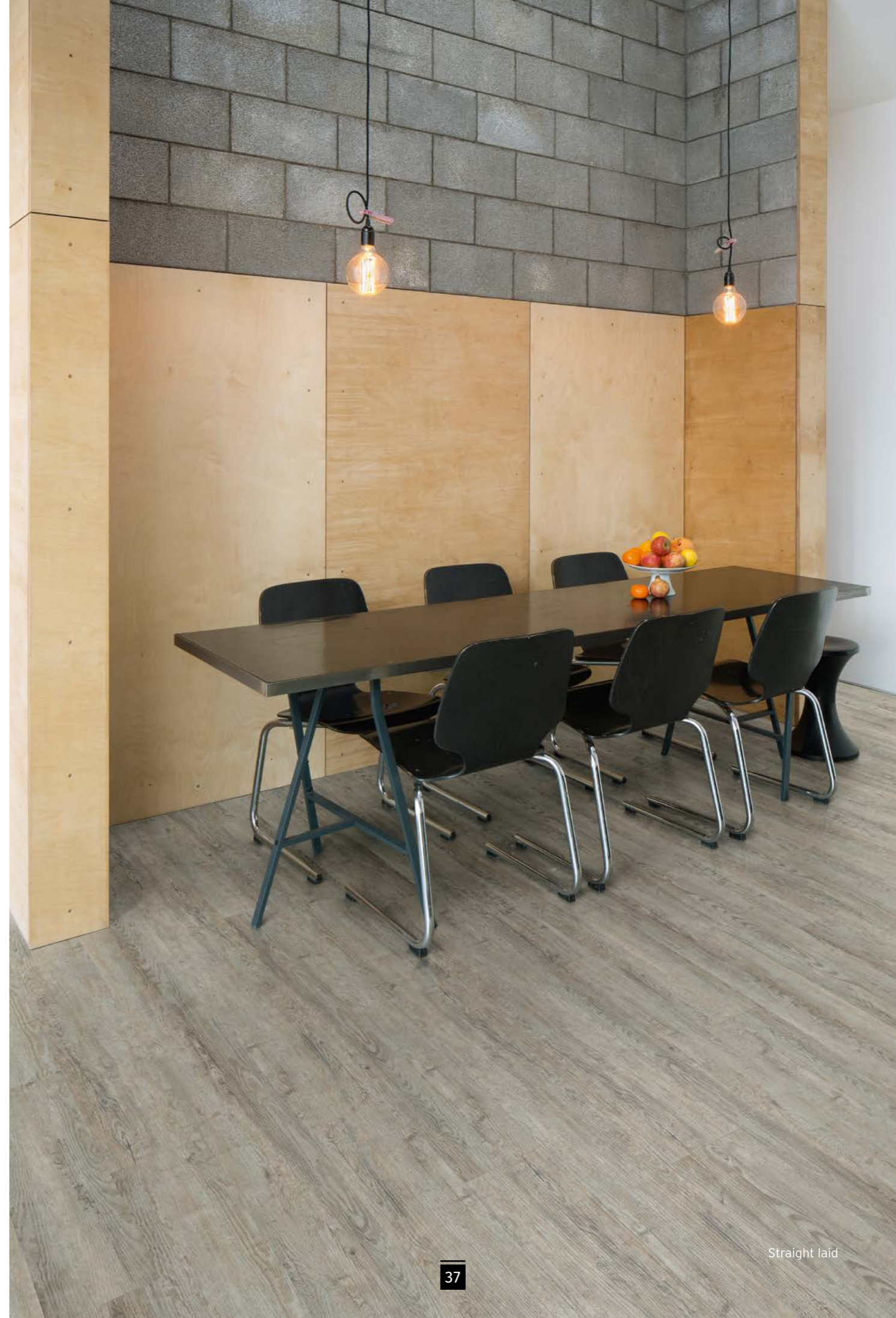
Mixed length, random laid with Cracked White Oak

The versatile base colours of Seasoned Grey Oak can be paired with other aged, reclaimed materials for a time-honoured look, or modern woods and concretes for an industrial effect.

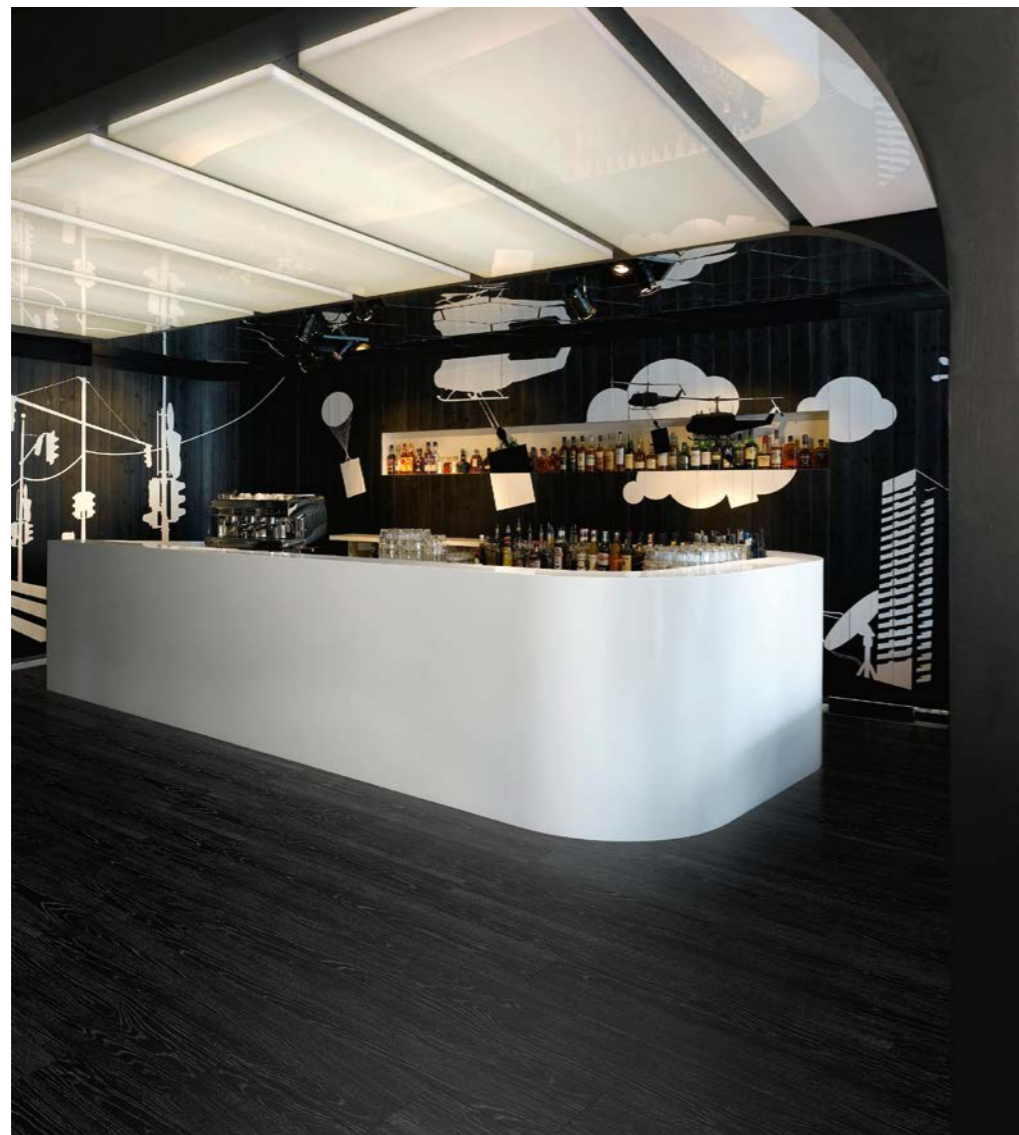


9884

Plank size 184.2 x 1219.2mm

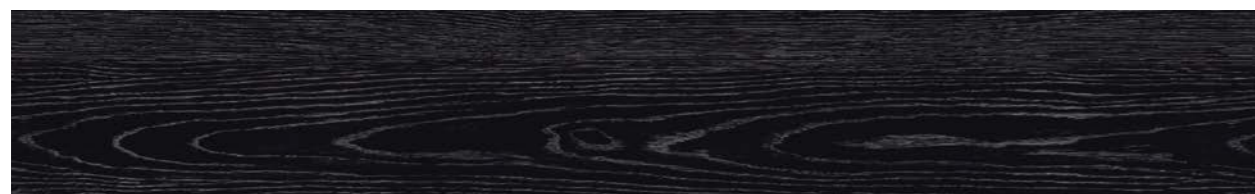


Jet Black Ash



Straight laid

Make a statement that sets the tone for any interior with the luxurious monochrome colour of Jet Black Ash. Its long grains and smooth surface will give a smaller space an edgy look, or make larger areas feel more intimate.



9885

Plank size 184.2 x 1219.2mm



Straight laid in two directions

The Collection

Beautifully engineered to authentically replicate the appearance of natural wood planks, the designs within the *Affinity2^{ss}* collection may contain knots and markings typical of natural timber.

Although we endeavour to ensure the colours depicted within this brochure represent the true colour of each product, we recommend you view an actual sample which we shall be happy to supply free of charge.

Visit polyflor.com and follow the link for Samples, or call the dedicated Polyflor Samples Hotline on **+44 (0) 161 767 2551**.

The **R values** shown denote a ramp test result, which is an ex-factory measure of slip resistance. For safety flooring with sustainable wet slip resistance, refer to Expona Control PUR or the Polysafe ranges.



9870 Aspen Pine

plank size: 184.2 x 1219.2mm **R10**



9871 Cracked White Oak

plank size: 184.2 x 1219.2mm **R10**



9872 Planed White Oak

plank size: 184.2 x 1219.2mm **R10**



9873 French Limed Oak

plank size: 184.2 x 1219.2mm **R10**



9874 Champagne Oak

plank size: 184.2 x 1219.2mm **R10**



9875 Dappled Oak

plank size: 184.2 x 1219.2mm **R10**



9876 Harvest Oak

plank size: 184.2 x 1219.2mm **R10**



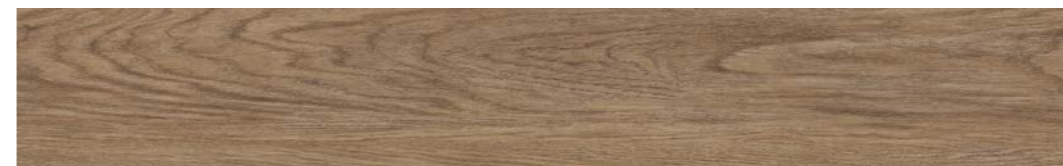
9877 Saw Mill Oak

plank size: 184.2 x 1219.2mm **R10**



9878 Cross Sawn Timber

plank size: 184.2 x 1219.2mm **R10**



9879 Hazel Oak

plank size: 184.2 x 1219.2mm **R10**



9880 Smoked Walnut

plank size: 184.2 x 1219.2mm **R10**



9881 Flamed Chestnut

plank size: 184.2 x 1219.2mm **R10**



9882 Huckleberry Oak

plank size: 184.2 x 1219.2mm **R10**



9883 Reclaimed Pine

plank size: 184.2 x 1219.2mm **R10**



9884 Seasoned Grey Oak

plank size: 184.2 x 1219.2mm **R10**



9885 Jet Black Ash

plank size: 184.2 x 1219.2mm **R10**

Flooring Accessories

When selecting a striking and inspiring floor design, there is virtually no limit to the number of layouts and patterns that can be created using *Affinity2⁵⁵*. Design floors using different plank sizes and decorative inlay strips can guide users through an interior space, create focal points or simply make a statement.

Marquetry Strips

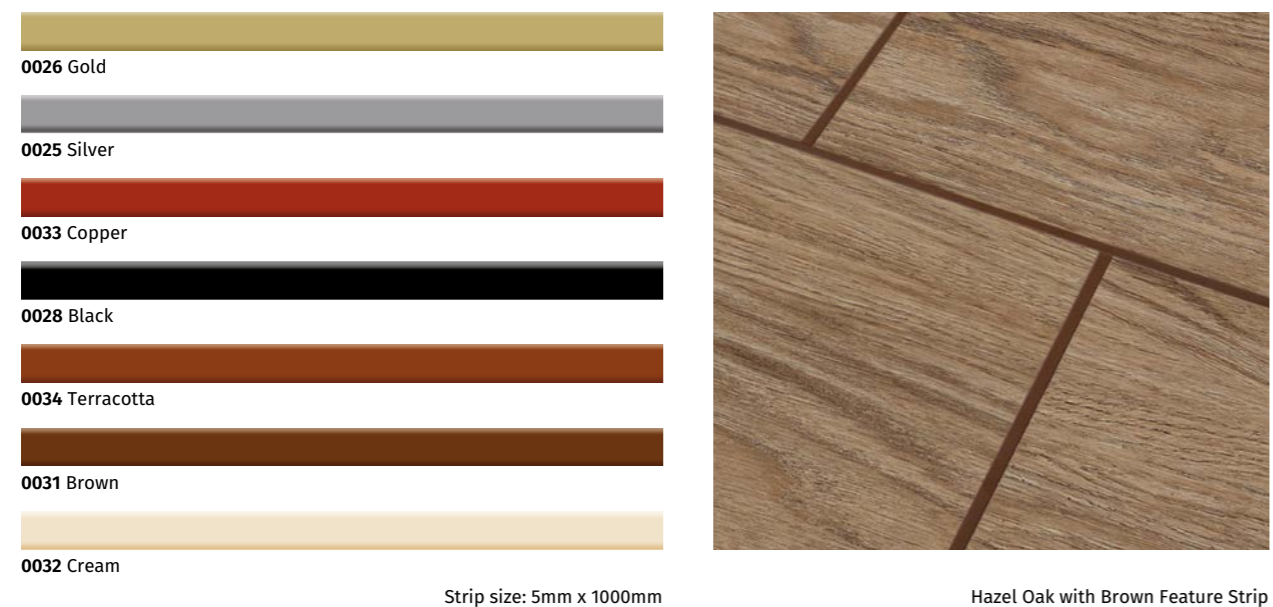
For those interiors looking for additional wood detailing within the floor design, *Affinity2⁵⁵* Marquetry Strips can be inlaid between planks and are available in 4 popular, delicate wood grains. Create a focal point within a room using a contrasting Marquetry Strip as a perimeter or between planks for a 'ships decking' effect in larger areas.



Note: As the Marquetry Strips are cut from natural wood designs, there will be variation in markings and decoration.

Feature Strips

Unlike Marquetry Strips that contain subtle wood tones and grains, *Affinity2⁵⁵* Feature Strips come in 7 solid colourways and can create a bolder graphic finish to an installation. Available in metallic and neutral tonal shades, there is a feature strip to suit every wood plank within the *Affinity2⁵⁵* collection.



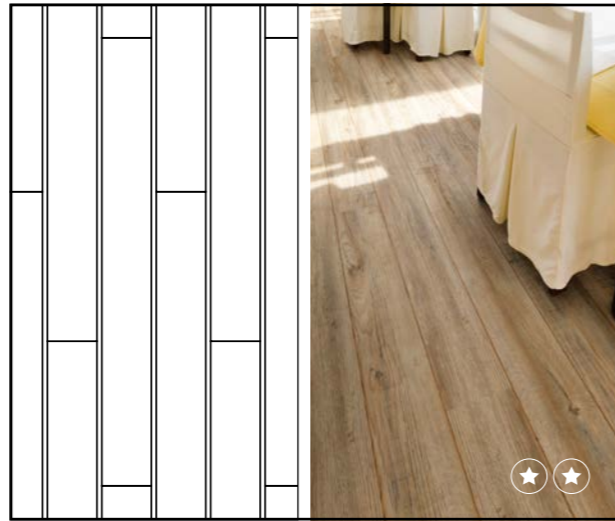
Design Floors

These linear drawings show a selection of flooring designs that can be recreated using the *Affinity2⁵⁵* collection. Whether you chose a simple, clean layout using full planks or something more ambitious incorporating *Affinity2⁵⁵* inlay strips, you can be assured of a finish that is both functional and eye-catching.

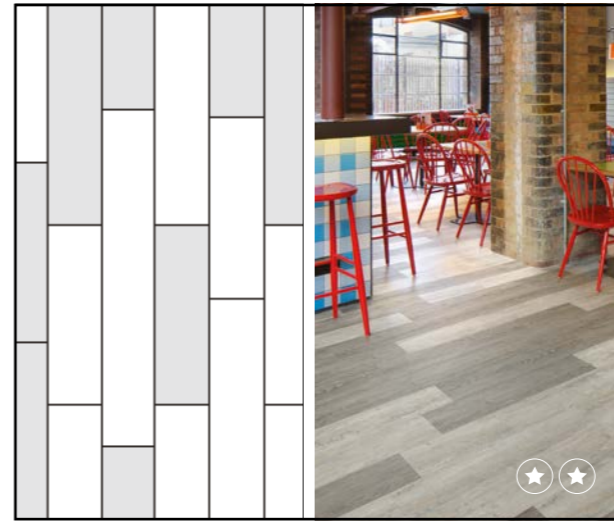
For those interiors looking for a truly individual flooring installation, Polyflor's bespoke cutting service can help tailor a solution for you including intricate cut patterns. From concept to completion of a project, we can provide visuals, advise on colour combinations and product selection to compliment the overall interior design scheme.



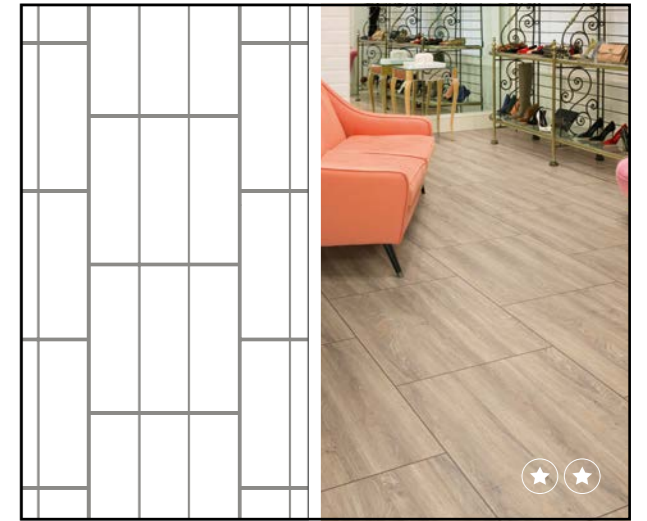
Straight laid plank - staggered



Straight laid plank with strip between each length ('ships decking' effect)



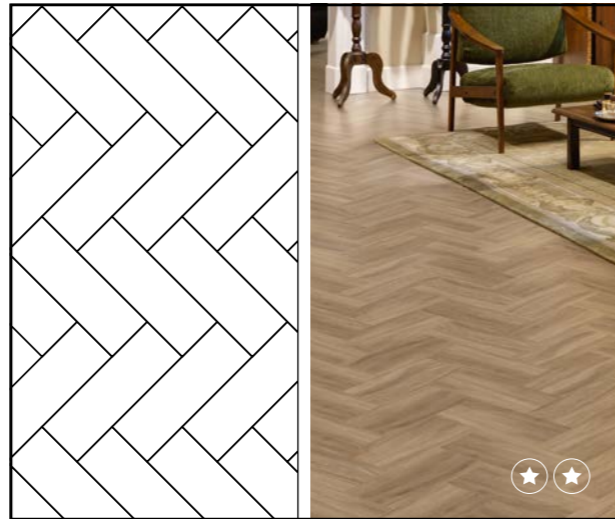
Mixed lengths, random laid



Brickwork wood tile



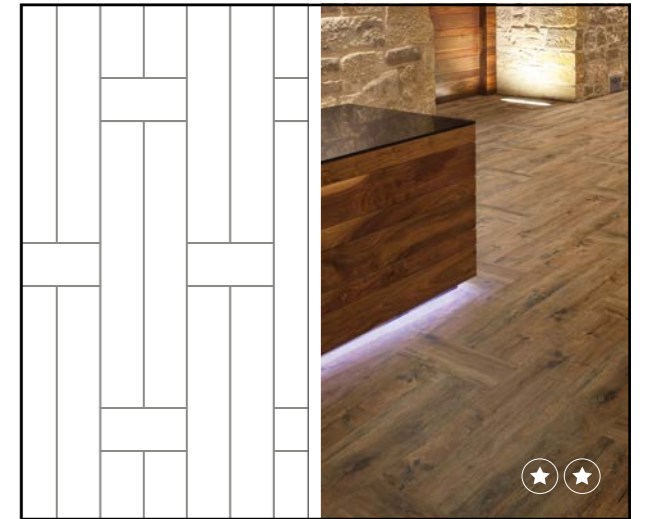
Herringbone design with full length planks



Herringbone design (typically third length planks)



Full plank rows with double plank cross sections



Double plank weave

★ Standard planks - no cutting ★★ Straight cuts

Technical Details

Affinity2⁵⁵ is not only a stand alone collection of beautifully replicated wood effect planks, but its 2mm gauge means Affinity2⁵⁵ gives you the flexibility to install it alongside other 2mm vinyl sheet flooring ranges, providing a seamless flooring solution for any heavy commercial interior.



The following table details the technical specification for Affinity2⁵⁵. Should you require any further information, contact Polyflor Customer Technical Services on: +44 (0)161 767 1912 or email tech@polyflor.com.

Specifications	Standards	Affinity2 ⁵⁵
Gauge	ISO 24346 (EN 428)	2.0mm
Wear layer	ISO 24340 (EN 429)	0.55mm
Packaging plank size	ISO 24342 (EN 427)	15 @ 184.2 x 1219.2mm = 3.37m ²
Finish		PUR
Total weight	ISO 23997 (EN 430)	2,964 g/m ²
General performance	ISO 10582 (EN 649)	Conforms
Use area	ISO 10874 (EN 685)	23 / 33 / 42
Slip resistance	EN 13893 DIN 51130 / DIN EN 16165 Ann. B	Class DS R10*
Dimensional stability	ISO 23999 (EN 434) ASTM F2199	<0.25% max Pass
Residual indentation	ISO 24343-1 (EN 433) ASTM F970 ASTM F1914	<0.05mm* <0.005" @ 750psi <0.005"
Light fastness	ISO 105-B02 (Method 3)	≥6
Reaction to fire	EN 13501-1 ASTM E662 ASTM E648 CAN/ULC S102.2	Class Bfl-S1 <450 Pass Class 1 FSV < 300; SDV < 500
Abrasion resistance	EN 649	Group T
Static electrical propensity	EN 1815	<2.0kV Classified as 'antistatic'
Castor chair (continuous use)	ISO 4918 (EN 425)	Suitable
Underfloor heating		Suitable, max 27°C
VOC emissions	Indoor Air Comfort Gold AgBB/ABG FloorScore	Eurofins certified product Pass Certified
Environmental preferable flooring		Polyflor Affinity2 ⁵⁵ PUR achieves a BRE Global Environmental A+ Generic rating (certificate No. ENP 429). Affinity2 ⁵⁵ PUR is 100% recyclable and contains average 40% recycled material. Recyclable via the Recofloor scheme. Visit www.polyflor.com/environment
Applications		Affinity2 ⁵⁵ PUR is ideal for heavy commercial areas within the retail, office, leisure, healthcare, education and housing sectors.

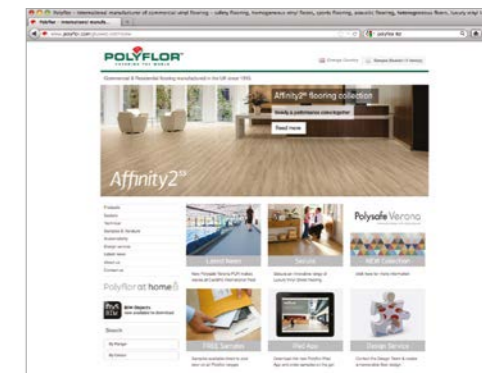
* For safety flooring with sustainable wet slip resistance, refer to Expona Control PUR or Polysafe ranges. Affinity, Affinity2⁵⁵ and 255 are trademarks of Polyflor Limited.

Support and Samples



For detailed product and technical information on all commercial flooring collections within the Polyflor portfolio, visit polyflor.com where you can browse installation galleries, product specifications, brochures and all the latest news.

Downloads and free product samples can also be easily requested too.



Floorcare & Maintenance

All of the shades in the Affinity2⁵⁵ collection feature a polyurethane reinforcement (PUR) that protects the floor from scuffing and allows the use of a polish-free maintenance regime, even in the most demanding of commercial interiors.

For more information on Affinity2⁵⁵'s installation, cleaning and maintenance guidelines, visit polyflor.com and navigate to the Technical section.

Free Sample Service

Polyflor provide a complimentary product sample service, to ensure you find the exact floor you are looking for. To order your free samples of any of the Affinity2⁵⁵ shades either visit the Polyflor website at polyflor.com, or call the dedicated Polyflor Samples Hotline on +44 (0)161 767 2551.

samples >>> direct

>>>> +44 (0)161 767 2551



Contact Us

For general information on your specific project, speak with your local Polyflor provider. If you require detailed technical data, contact Polyflor Customer Technical Services on: +44 (0)161 767 1912 or email tech@polyflor.com

For details of international availability see the back cover of this brochure for global contacts. Alternatively visit polyflor.com and follow the Contact Us link.



Affinity2⁵⁵TM

POLYFLORTM INTERNATIONAL

Australia

Polyflor Australia
Tel: 1800 777 425
Email: sales@polyflor.com.au

Canada

Polyflor Canada Inc.
Tel: +1 905 364 3000
Email: sales@polyflor.ca

China

Polyflor Hong Kong O/B Polyflor Ltd.
Tel: +(852) 2865 0101
Email: info@polyflor.com.hk

Colombia

Polyflor Ltd. (LATAM Office)
Tel: +57 3223082375
Email: info@polyflor.com

France

James Halstead France SAS
Tel: +33 (0)8 20 20 32 11
Email: info@jhfrance.fr

Germany

objectflor Art und Design Belags GmbH
Tel: +49 (0) 2236 966 330
Email: info@objectflor.de

India

Polyflor India Pvt Ltd.
Tel: +91 22 4023 2485
Tel: +91 22 4023 2486
Email: info@polyflor.co.in

Ireland

Polyflor Ireland
Tel: +353 (1) 864 9304
Email: salesireland@polyflor.com

Malaysia

Polyflor Martex
Tel: 1300 80 7788
Email: sales@polyflor.com.my

Middle East

Polyflor Ltd.
Tel: +971 50 406 8114
Email: info@polyflor.com

New Zealand

Polyflor New Zealand Ltd.
Tel: 0800 765 935
Tel: +64 9 269 1111
Email: sales@polyflor.co.nz

Norway

Polyflor Nordic
Tel: +47 23 00 84 00
Email: firmapost@polyflor.no

Spain

Polyflor Ltd.
Tel: +34 619 949 054
Email: info@polyflor.com

Sweden

Polyflor Nordic Sweden AB
Tel: +46 (0) 300 15820
Email: info@polyflor.se

www.polyflor.com



POLYFLORTM HEAD OFFICE

POLYFLOR LTD. PO BOX 3 RADCLIFFE NEW ROAD WHITEFIELD MANCHESTER M45 7NR UK

UK SALES DIRECT: +44 (0)161 767 1122

UK SAMPLE REQUESTS: +44 (0)161 767 2551

EXPORT SALES DIRECT: +44 (0)161 767 1913

UK FAX: +44 (0)161 767 1128

EXPORT FAX: +44 (0)161 767 1166

TECHNICAL SUPPORT: +44 (0)161 767 1912

RECEPTION: +44 (0)161 767 1111

E-MAIL: INFO@POLYFLOR.COM

WEBSITE: WWW.POLYFLOR.COM

