

THE HOTEL AND HOSPITALITY
DOOR COLLECTION

MADE TO ORDER BY
ahmarra



For over 25 years, Ahmarra have been making doors for customers who appreciate quality. Our experience manufacturing in performance doorsets for prestigious hotel projects has inspired us to develop this range of doors. Ahmarra's unique approach aims to make the entire process as simple and practical as possible.

Our doorsets are made individually to order, allowing complete design freedom and ensuring that every project is truly unique. We offer three design options:

BESPOKE DESIGN - We work with hoteliers, interior designers, architects and developers to help clients achieve their desired look and build the correct specification for the hotel.

CLIENT SPECIFIC STANDARD DOORSETS - We also specialise in working with hoteliers to develop client specific standard doorsets, our clients have recognised that significant cost savings can be made by offering a uniform finish throughout and eliminating the need to re-define doorsets & ironmongery for every project.

HOTEL RANGE DOORSETS - To simplify specification, this range of pre-defined hotel doorsets offer a simple design solution whilst still allowing for options in facings and finishes enabling the specifier to tailor the design to their requirements.

WHY SHOULD YOU CHOOSE AHMARRA?

- QUALITY** We use the finest materials, cutting edge technology and traditional craftsmanship to guarantee exceptional standards.
- BESPOKE** You select the style, the material, and the finish from a wide range of options, creating the perfect look with limitless possibilities.
- GREEN** We care about our environment, our materials are FSC® certified and built to last for generations.
- BRITISH** Made in Britain to the highest quality standards, our range includes both traditional and contemporary styles to perfectly complement the interior design, we are proud to fly the flag for UK manufacturing.



Ahmarra's reputation for excellence has led to it supplying timber doors for some of the UK's finest interiors, from private homes to luxury hotels and commercial buildings. Recent 4 and 5-star London hotel projects include; InterContinental London - The O2, Apex Bath, Grange Minories, The Mondrian at Sea Containers House, The Metropolitan by Comco and The Mandarin Oriental, which are both on Park Lane.



ARTISAN PANEL DOOR
IN A WOODROW OAK STAINED VENEER



SUPPLY AND INSTALLATION OF DOORSETS
INTERCONTINENTAL LONDON - THE O2





INSTALLATION OF DOORSETS, LACQUERED
PANELS & ARCHITECTURAL JOINERY
ME HOTEL , LONDON





ARTISAN PANEL DOOR
IN A WOODROW OAK STAINED VENEER





APEX CITY OF BATH HOTEL
AHMARRA INSTALLATIONS

Photo Credit: Paul Riddle



AMERICAN BLACK WALNUT VENEERED DOORSETS
METROPOLITAN HOTEL , PARK LANE, LONDON

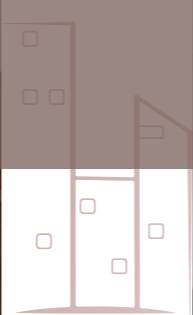




ARTISAN PANEL DOOR
PAINTED ON SITE, SUPPLIED IN A PRIMED ECO-VENEER



ARTISAN PANEL DOOR
IN A "PURE WHITE" LACQUER PAINT





SUPPLY AND INSTALLATION OF
AMERICAN BLACK WALNUT STAINED DOORSETS
FINISHED WITH A BESPOKE STAIN



ARTISAN PANEL DOOR
FINISHED IN DARK WALNUT



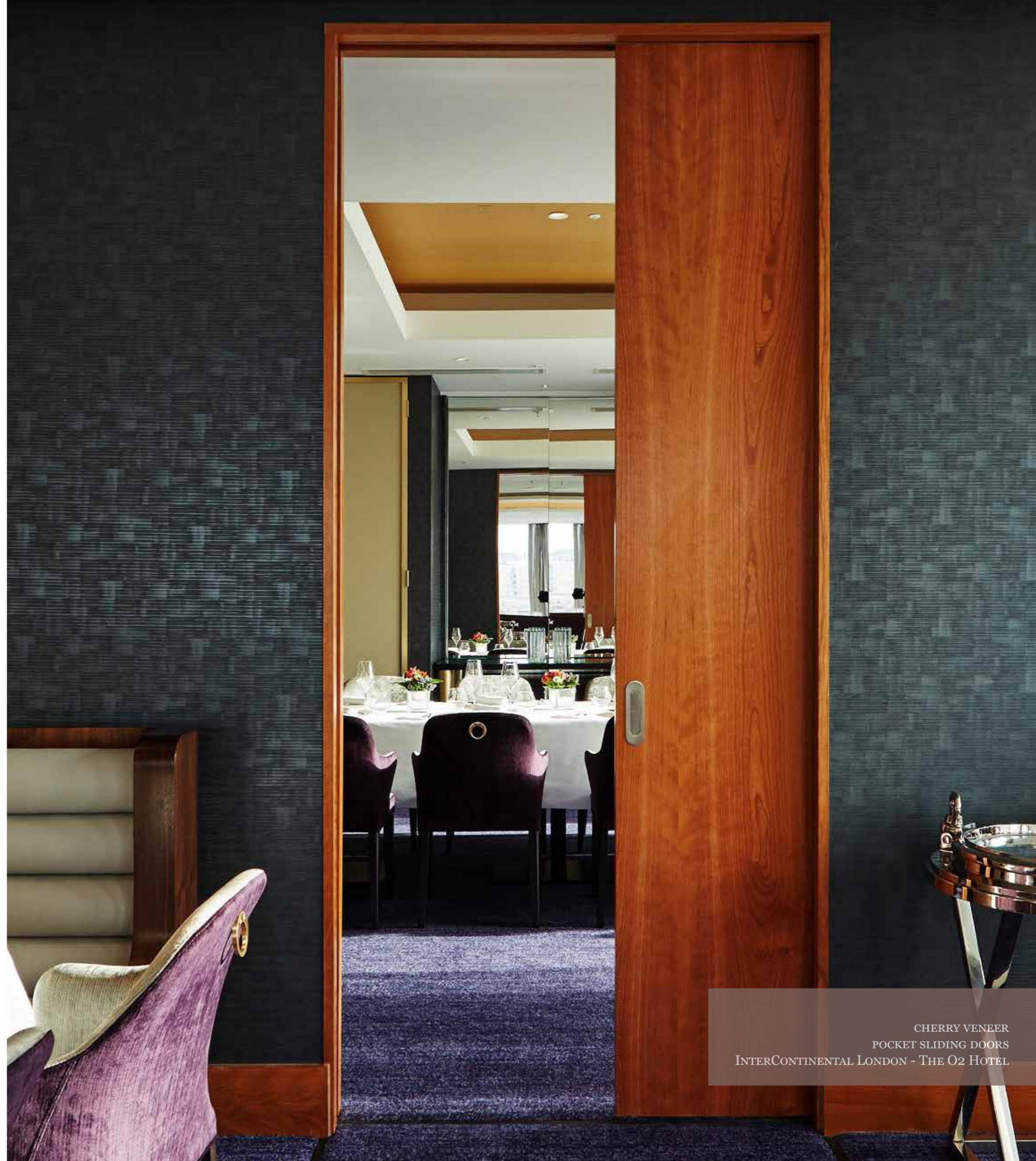


INTERCONTINENTAL LONDON - THE O2 HOTEL

Type of Works: Supply and installation of bespoke doorsets to public areas including reception, restaurants, meeting rooms, ballroom, toilet and spa areas.

Ahmarra supplied and fitted over 300 severe duty timber fire doors in an FSC cherry veneer for the 5-star hotel situated on Greenwich Peninsula. Ahmarra's contract consisted of manufacturing and installing fire rated doorsets for the public areas including reception, restaurants, meeting rooms, ballroom, toilets and spa areas.

The InterContinental London – The O2 is adjacent to the world-renowned arena, The O2, and close to Greenwich's famous attractions. The stunning 453-room hotel brings a new level of luxury accommodation to the area. Alongside its five destination-inspired restaurants and bars, including The Peninsula Restaurant and rooftop sky bar, Eighteen, the hotel boasts a world-class health spa and sumptuous accommodation – including 59 suites – and the most breath-taking, far-reaching views of London.



CHERRY VENEER
POCKET SLIDING DOORS
INTERCONTINENTAL LONDON - THE O2 HOTEL



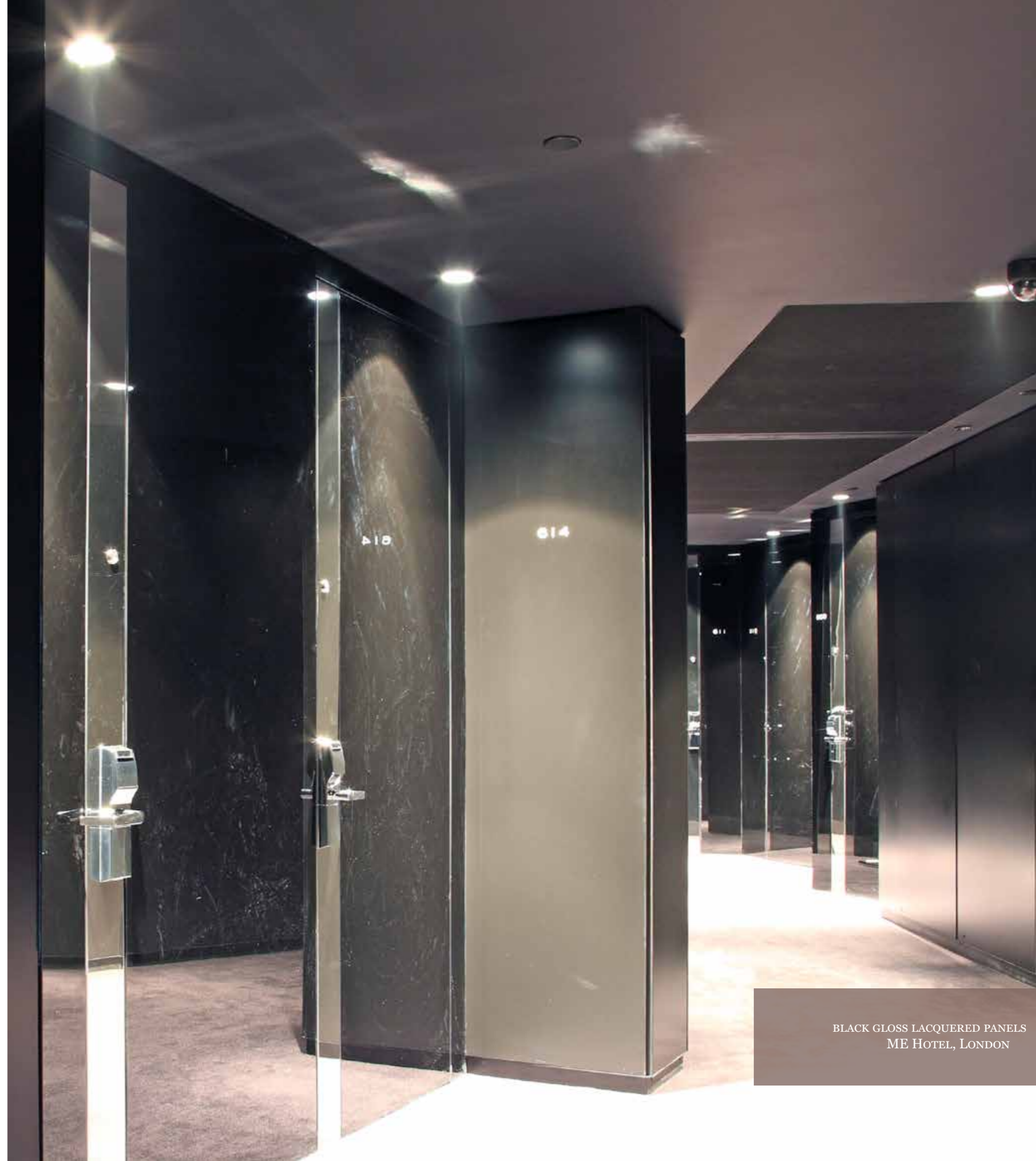
ME HOTEL, LONDON

Type of works: Supply and Installation of bespoke doorsets, lacquered panels and architectural joinery.

The 157-room ME London, part of the Sol Melia group, occupies a landmark site in London's West End and captures incredible views of the city. The property features two destination restaurants and bars at ground and roof level, as well as a convention centre.

ME London has been designed by renowned British architects Foster + Partners as a cutting-edge, contemporary hotel and joins the ranks of their signature projects.

Ahmarra's contract, through the main contractor Gleeds, consisted of supplying and fitting numerous elements including riser doorsets, forming softwood partitions and full height, factory finished, black gloss lacquered panels.



BLACK GLOSS LACQUERED PANELS
ME HOTEL, LONDON



COMO METROPOLITAN HOTEL, LONDON

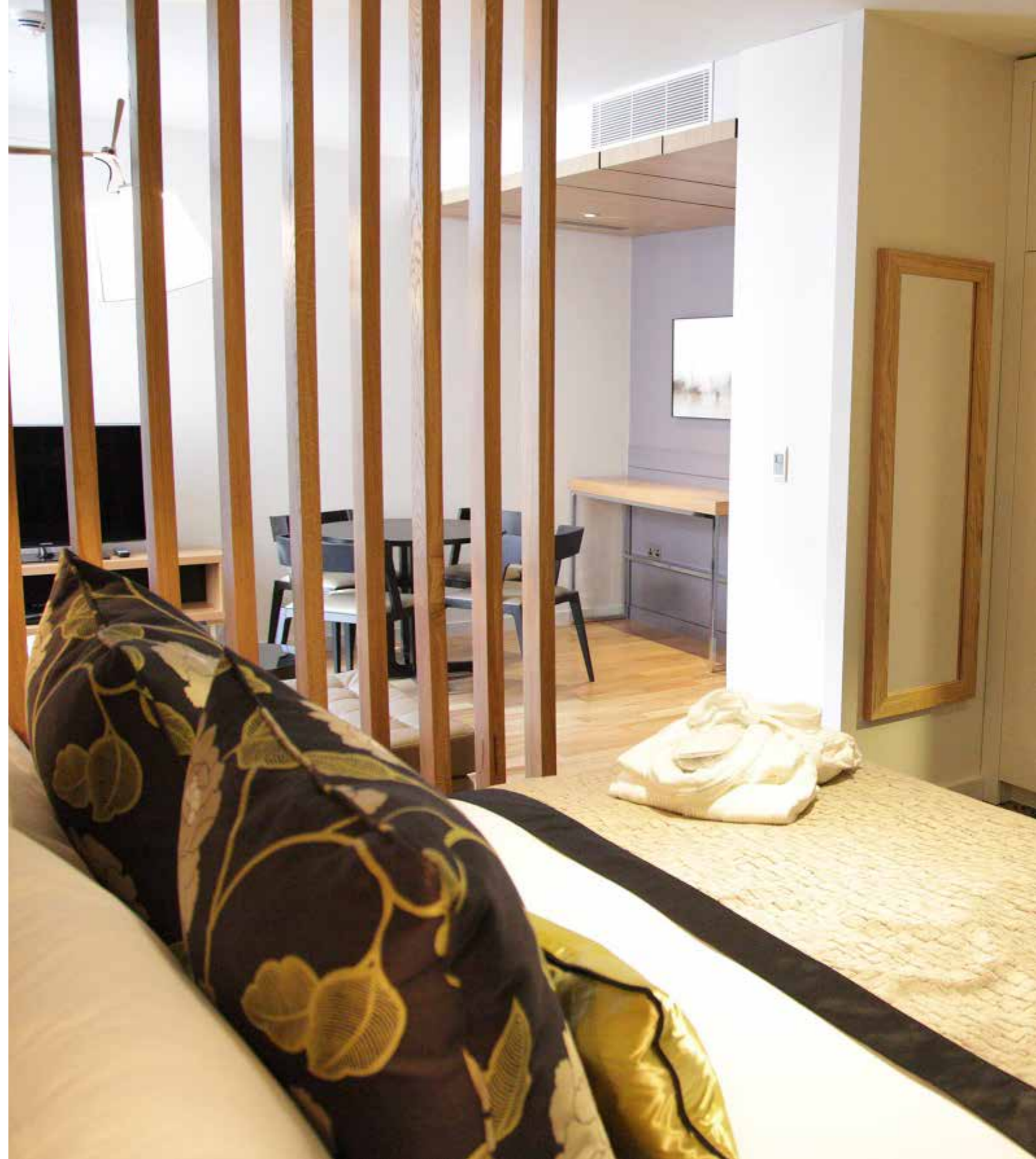
Type of works: Supply and installation of bespoke doorsets to bedrooms, bathrooms, suites and corridors.

Ahmarra have completed a fit-out sub-contract for the bedroom and corridor doors for this stunning 5-star hotel which overlooks Hyde Park. The 5 star COMO Metropolitan London combines sophisticated design and a vibrant prime position on Park Lane. COMO Metropolitan London is also home to renowned restaurant, Nobu for Japanese-Peruvian cuisine and the lively Met Bar.

Ahmarra manufactured and installed bedroom doors for the 144 bedrooms and suites. Pale sycamore veneers were carefully selected by the interior designer, Forme UK, for the bathroom and bedroom entrance doors to complement the light and clean interior of the hotel. The bedroom entrance doors featured a quarter cut American Black Walnut veneer.



PALE SYCAMORE VENEERED DOORS
COMO METROPOLITAN HOTEL, PARK LANE
LONDON



APEX TEMPLE COURT HOTEL

Type of works; Supply and install of doorsets, reception panelling, glazed screens and wood flooring.

Situated just off Fleet Street, this landmark Apex Hotel has been converted from one of London's Inn of Courts into a four-star contemporary hotel, with 184 bedrooms, together with restaurant, bar and conference facilities.

Ahmarra Installations contract by Tolent Construction. The Supply and fitting numerous elements including doors for bedrooms and suites, luxury vanity units, bedheads, wardrobes and solid wood flooring in all bedrooms. In addition, Ahmarra fitted out the highly bespoke reception area with wood panelling, coloured and etched glass feature screens, and wood flooring. Ahmarra have completed five Apex hotels.



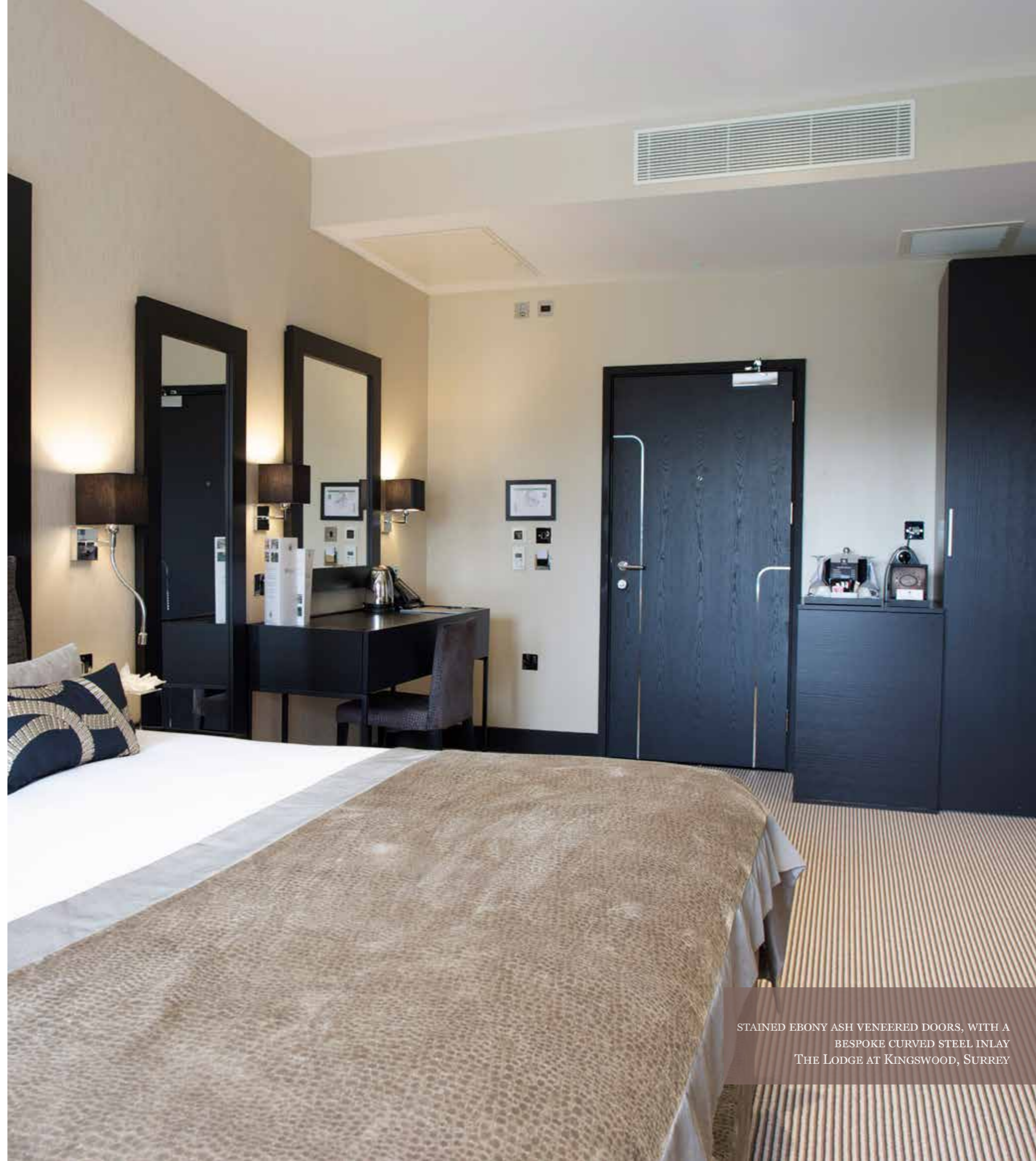
THE LODGE AT KINGSWOOD

Type of works: Supply of bespoke doorsets to bedrooms, bathrooms, suites and corridors.

The Lodge at Kingswood is a brand-new boutique hotel set in the stunning Surrey countryside in the grounds of Kingswood Golf Course, one of the leading golf courses in Surrey.

The Lodge has eighteen individually styled, contemporary rooms and is an ideal addition to the facilities of the Kingswood Golf Course and Country Club.

Ahmarra supplied bespoke stained, ebony ash veneered doors which featured a curved steel inlay design, which complements the luxurious interior of the lodge and golf club.



STAINED EBONY ASH VENEERED DOORS, WITH A
BESPOKE CURVED STEEL INLAY
THE LODGE AT KINGSWOOD, SURREY



GRANGE TOWER BRIDGE HOTEL

Type of works: Supply bedroom, corridor and entrance doorsets.

The 5-star Grange Tower Bridge Hotel redefines luxury accommodation within the famous Tower Bridge district. With stunning views over London, the hotel incorporates 370 contemporary guest bedrooms and suites divided into three blocks of varying heights interlinked by glass bridges.

Ahmarra supplied smoked eucalyptus and horizontal grained walnut veneered doors to the bedrooms, corridors and entrance. The bathrooms, suites and wardrobe doors were supplied in a horizontal grained American black walnut veneer. Ahmarra have completed five Grange Hotel projects.

AMERICAN BLACK WALNUT VENEERED DOORSETS
GRANGE TOWER BRIDGE HOTEL, LONDON

DOOR FACINGS, FURNITURE & SPECIFICATION





LAMINATE DOORSET FACED IN;
FORMICA®
F0949 WHITE, TEXTURE - LINWOOD



LAMINATE DOORSET FACED IN;
FORMICA®
F8966 DELANO OAK, TEXTURE - PUREGRAIN





LAMINATE DOORSET FACED IN;
FORMICA®
F0193 XENON, TEXTURE – MATTE 58



LAMINATE DOORSET FACED IN;
FORMICA LIGNA®
V8402 - HALCYON CROWN





IZÉ BESPOKE DOOR FURNITURE

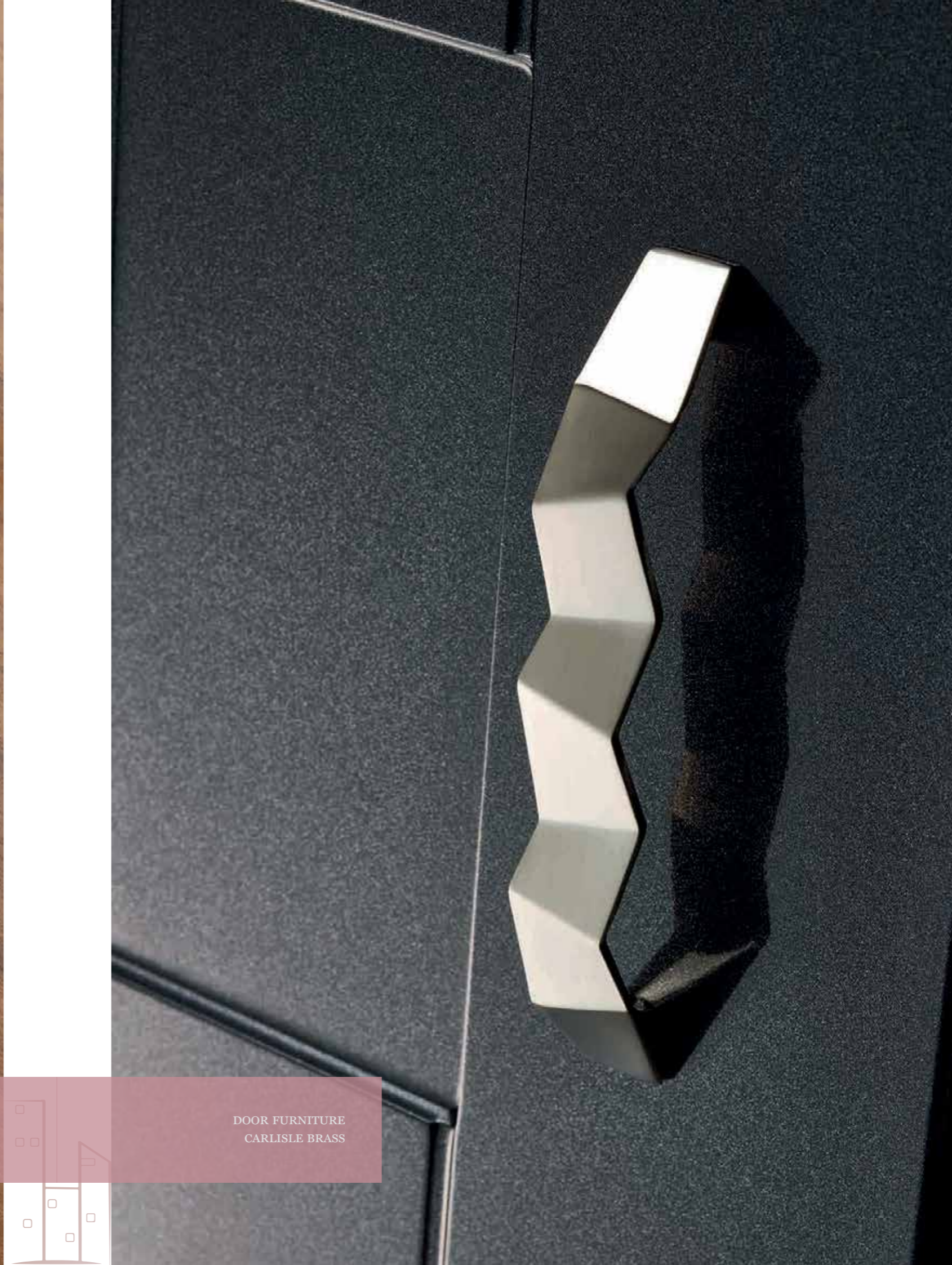


IZÉ BESPOKE DOOR FURNITURE

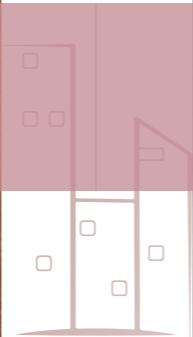




DOOR FURNITURE
CARLISLE BRASS



DOOR FURNITURE
CARLISLE BRASS



FACING STYLES

WOOD VENEER

Veneer offers sustainability, durability, and unlimited creative possibilities. You can achieve a uniform, perfect finish and using veneers avoids the problems associated with solid wood, such as knots, splitting and staining. You can even select a different veneer for each side of the door, to suit different room styles.

BENEFITS

- Natural aesthetic
- Range of colours & grains
- FSC® certified
- Available in a range of stains
- Crown or quarter cut

We offer a full range of standard wood veneers and we are continually developing new stains for our veneers to meet customer needs as well as options for pre-dyed veneers.

LAMINATES

Laminates are chosen for their durability, ease of maintenance and wide range of colours and complementary textures. From neutral tones to vibrant colours, natural looking woodgrains to on-trend patterns, our laminate range of doors are perfect for any hotel style.

BENEFITS

- Durable
- Ease of maintenance
- Wide Range Colour options
- FSC® certified

WHAT NEXT?

Our experienced team is happy to offer expert advice and samples if required on any of our facings. For more details, please refer to our "Facings and Finishes" brochure.

SAMPLE SERVICE

Due to the nature of wood, photography may vary and be inaccurate in depicting the uniqueness of veneer and stained veneer. We are happy to provide our customers with samples of our veneers and stained veneers.



ARTISAN PANEL DOORS,
IN A WOODROW OAK STAINED VENEER

Photo Credit: Jonathan Little Photography

SPECIFYING A DOOR

HOW WE MAKE IT EASY FOR YOU TO FIND AND SELECT THE PERFECT DOORSET FOR YOUR HOTEL.

Our doorsets are made individually to order, allowing complete design freedom and ensuring that every project is truly unique. **We offer three design options:**

1. BESPOKE DESIGN

We work with hoteliers, interior designers, architects and developers to help clients achieve their desired look and build the correct specification for the hotel. We realise the importance of fluidity throughout your hotel design, giving the entire build a seamless finish.

2. CLIENT SPECIFIC STANDARD DOORSETS

We also specialise in working with hoteliers to develop client specific standard doorsets, our clients have recognised that significant cost savings can be made by offering a uniform finish throughout and eliminating the need to re-define doorsets & ironmongery for every project. Please contact us for further discussion on how we can help you create your client specific doorset range.

3. HOTEL RANGE DOORSETS

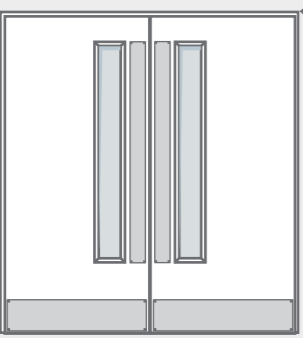
Our many years' experience of manufacturing and installing doors within the hotel sector has led us to produce this range, which has been specifically tailored to suit the hotel sector.

To simplify specification, this range of pre-defined hotel doorsets offer a simple design solution whilst still allowing for options in facings and finishes enabling the specifier to tailor the design to their requirements.

Whichever option suits your project best you can be assured that our core values will be maintained. Our aim is to make the entire process as simple and practical as possible, offering solutions to the challenges presented by Building Regulations including performance requirements and complex design issues.


HOTEL RANGE SPECIFICATION EXAMPLE;


1 CIRCULATION & PUBLIC SPACES



2 TYPE 04

3 Lounge, Bar, Reception, Restaurant, Lobby, Lift lobby, Reception, Atrium, Stair, Ballroom.

4 Fire Rating


5 Acoustic Rating Rw(dB)*


6 AFDKC (Fr Only)

7 Specification

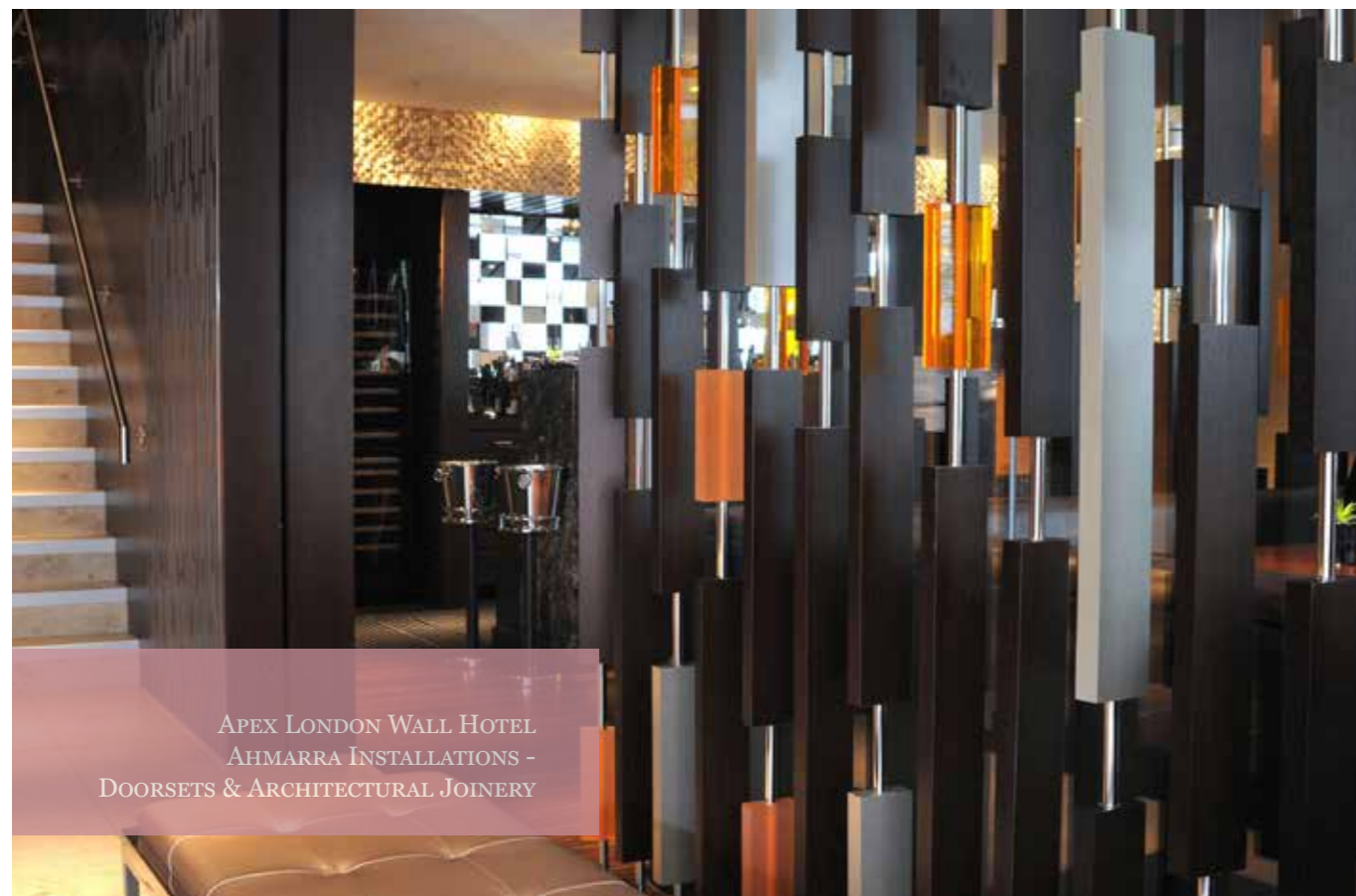
Configuration	Double
Vision Panel	Standard
Operation	Push/Pull
Lining	Standard

8 IRONMONGERY PACK 04
FOR MORE INFORMATION SEE; ahmarra.co.uk

Please visit our Hotel Range Product Selector on our website, which is a step-by-step process for specification from our pre-defined range of hotel doorsets.

- | | |
|---|--|
| 1 Door Section | 5 Highlighted suggested acoustic rating for doorset |
| 2 Doorset type - for scheduling purposes, and future reference | 6 Fire rating signage type - fire rated doors only |
| 3 Door placement areas | 7 Door specification - configuration etc. |
| 4 Examples of suggested/available fire ratings | 8 Ironmongery pack which accompany doorsets - some doors have a choice of standard packs. |





APEX LONDON WALL HOTEL
AHMARRA INSTALLATIONS -
DOORSETS & ARCHITECTURAL JOINERY

Case Study;

Ahmarra Installations won the design & build contract for the supply and installation of guest-room, corridor and reception area door-sets and joinery, having successfully completed previous projects for Apex Hotels. Within this contract, Ahmarra also installed solid wood flooring, walnut bed-heads, bespoke wardrobes in the bedrooms as well as corridor wall panelling, reception area desk, 'block' feature screens and fitted leather seating in the restaurant.



AHMARRA INSTALLATIONS

A HIGHLY SKILLED AND EXPERIENCED SPECIALIST JOINERY CONTRACTOR CONCENTRATING ON LUXURY HOTELS, APARTMENTS AND COMMERCIAL PROJECTS.

WHAT WE DO

We work closely with contractors, designers and architects to provide a complete service for their design, manufacture and installation requirements.

WE OFFER

A complete or partial service, our dedicated team is used to working within tight budgets and deadlines. Our ability to offer significant manufacturing capabilities enables us to provide a reliable and flexible service to our clients.

INSTALLATION TEAM

We have a highly-skilled, highly-motivated team of Project Managers, site foremen, skilled joiners and carpenters. Our installation team are time-served tradesman, CSCS card holders and have been handpicked to have the right attitude and experience.

PROVEN TRACK RECORD

For over 20 years we have successfully completed many high-profile construction projects in the UK. Our track record is proven and we have many returning clients.

PROJECT WORKS INCLUDE;

Project works include installing timber doorsets, riser doorsets, wall panelling, architectural joinery, skirting, window boards softwood partitions, bedheads, wardrobes, solid wood flooring, bespoke reception desks, coloured and etched glass feature screens; toilet cabinets, cubicles and vanity units.



WIMBLEDON TENNIS CLUB



THE ROYAL ALBERT HALL



THE LONDON GUILDHALL



ANCHORAGE PLACE ATRIUM



THE HOME OFFICE LONDON



ALPHABETA OFFICE BUILDING,
LONDON

CLIENT FOCUSED APPROACH

A FEW WORDS TO OUR CLIENTS

We remain focused on providing excellent customer service from inception to completion of a project. We do this through our tried and trusted manufacturing and project management team, who implement first rate procedures ensuring projects are delivered on time and to the clients' expectations. We build long term relationships with our clients because we take the time to understand their needs and we treat every job as our passport to future business. Our other developed ranges include;



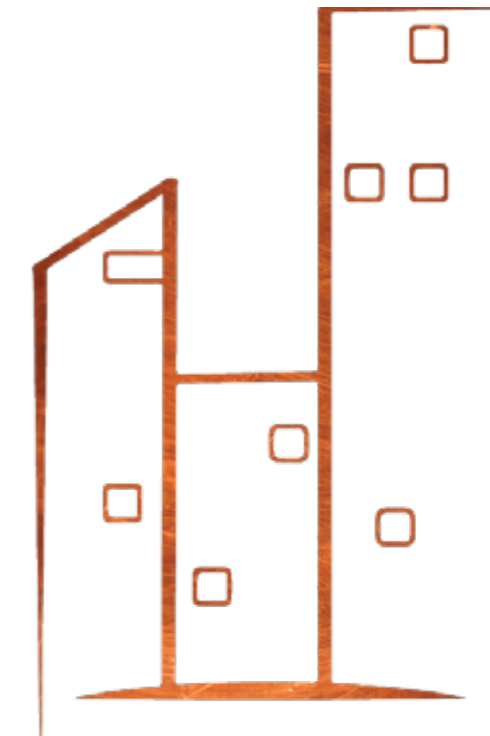
ARTISAN RANGE



EDUCATION RANGE

SITE PROTECTION

Our doors are delivered wrapped in a suitable packaging material as standard. Through our experience of site installation and the damage that can occur during the building process, we recognise the need for good, on-site protection. We now offer full site protection applied in the factory, that will allow the door to function normally (open and close) but will last until the end of the project when it can be removed. In addition we are happy to recycle the protective packaging at no extra cost.



THE HOTEL AND HOSPITALITY DOOR COLLECTION

FREE ADVICE & SAMPLE SERVICE

Our experienced team are happy to offer you expert advice and veneer samples if required, please contact us at:

phone: 02392 389 076
email: sales@ahmarra.co.uk
website: www.ahmarra.co.uk

Brochure Version: 1
Date: 2017

Ahmarra Door Solutions
Unit 20
Fitzherbert Road
Portsmouth
Hampshire
PO6 1SD