



RENDER AND BRICK SLIPS

Trend setting facades and finishes



The Smithy, Fidlers Lane, East Ilsley RG20 7LG
01183 240130

Oak Tree Barn, Unit 6 Hatton Lane, Warrington WA4 4BX
01925 648425

www.alivauk.com
@AlivaUK
@AlivaUK

Via Bellaria, 40
47030 San Mauro Pascoli (FC) Italy
+39 0541 815 811





INTRODUCTION

Backed by six decades of Italian flair from our parent company, Aliva UK works in close partnership with customers to ensure they get the most from our expert, end-to-end service, combining highly-developed design skills with detailed technical knowledge.

It means we follow through to a first-class finish on every facade that has our name on it. We believe in facades with flair and are proud to be associated with many high-profile, beautiful buildings across the UK alongside signature buildings overseas.

From the Prada store in Las Vegas, to the New York Subway, the La Scala Opera House in Milan to Microsoft's European HQ in Dublin, Aliva's architectural solutions leave a distinctive mark on landscapes and skylines.

Our suite of facades responds to architects' visions and sets new aesthetic trends in turn. This brochure looks at our insulated render and brick slip solutions systems.

It shows how curves, clean lines and colour palettes can be accommodated in insulated render. That's alongside a renaissance for traditional brick finishes in a range of hues from clay tones through to cool greys and blues through to our new, larger than life Listello Slips.

We are proud to announce that Aliva has achieved A1 accreditation for its latest clay brick slip external wall insulation system. The system has been developed to ensure the highest fire classification has been achieved based on testing to standard EN 13501-1:2019. To achieve A1 rating all individual components that make up the system are tested to this standard.

For render or brick slip design or technical advice, technical drawings, details on the BBA's European Certification and fire testing contact Aliva UK on: 01189 635900 or email at: enquiries@gruppovivas.co.uk



EVOLUTION OF RENDER

Architects often opt for insulated render when looking for an attractive, cost effective cladding solution that can be applied quickly and easily.

But rather than be considered a cladding 'common denominator', reliable insulated render systems in a wide-ranging palette can create colourful exteriors that stand the test of time and stand up to the elements.

Our roots in the paint industry mean Aliva is able to offer quality, reliable insulated render systems from the most vivid colours to subtle hues.

The heritage of Aliva's Italian parent company is responsible for the multi-coloured render proposition the company offers today, finishes that have been used across retail, residential, hospitality, leisure and education sectors.

From a small painting business, Ferruccio Colonna founded IVAS (Impresa Verniciatori e

Affini Sammaurese) in 1953, with the production of paint and varnishes following.

By 1960 production had increased with IVAS paints and varnishes sold across Italy. By 1967 production was industrialised and by 1971 it took the decisive step into the paint industry.

One step ahead of the times, IVAS was among one of the first companies to launch the external insulation system on the Italian market in 1979, exporting by 1980.

It's that legacy of paint experience and pigment specialty that underpins the render swatches that form Aliva's Termok8® insulated render proposition, bringing contemporary tones and exacting colour choice to building projects.

A Standard palette with hundreds of colours is available, alongside a Strong colour series of 50 plus options as well as totally bespoke colour matches.

Used as a standalone finish or in combination with stylish brick slip ranges, this brochure will show just how sleek, stylish and vibrant Aliva's insulated render can be.



The Colonna family



Lawley Village Primary Academy

RENDER FOR ALL STYLES AND SEASONS



More than a third of the heat in a building is lost through its walls. This means high-quality insulated render that delivers a crisp, contemporary finish is a must for energy-conscious projects, keeping buildings cool in the summer and warm in the winter.



Aliva's insulated render meets modern thermal requirements, while providing a beautiful, weatherproof and long-lasting finish to external walls. It is perfect for new builds or retrofits, with the colour entirely down to the customer to specify from soft tones that complement the skyline to striking shades that steal attention.

Aliva has achieved A1 accreditation for its latest clay brick slip external wall insulation system. It has been developed to ensure the highest fire classification has been achieved based on testing to standard EN 13501-1:2019.



Aliva UK continues to develop solutions for the External Wall Insulation sector which strictly accord with current Building Regulations and ensure testing of each entire system is undertaken and certified, which allows clients to be comfortable with specifying Aliva UK system solutions.

Testing was also undertaken on the clay slip bonding agents. The bonding agents used were tested to provide a load value, which delivers further comfort to the market. The tests provided results that exceed two tonnes per square metre. This kind of strength is equivalent to comfortably hanging an average family car off each square metre of wall.

The newly designed EWI system, is fully non-combustible, and is fully monolithic meaning that it can be wholly and safely wrapped around any modern building structure.



Termok8® Minerale

- ✔ We have certified systems for timber and SFS installations, with and without a drained or vented cavity.
- ✔ We can provide design and manufacturing solutions for off-site modular build.
- ✔ We hold British Board of Agreement (BBA) certificates for our Termok8® insulated render systems, giving our customers the reassurance they need on the quality and safety of our products.
- ✔ Our ranges hold both Euro Class A and B fire performances, to comply with current building regulations and insurance standards.
- ✔ The company is a member of the Insulated Render and Cladding Association (INCA) and the National Insulation Association (NIA), trade bodies which represent the UK for external wall insulation (EWI).
- ✔ Our certification allows the systems to be used on a wide variety of building types, both high and low-rise structures, offering a high degree of design flexibility.

OUR TRUE COLOURS

From vivid accent colours in our Strong range to a sweeping selection of pastel shades in our Standard palette, our insulated renders are colourfast thanks to their UV stable composition.

Stylish, clean whites, earthen tones that complement landscapes and subtle shades sympathetic with skylines mark out the benefits of specifying our Standard range.

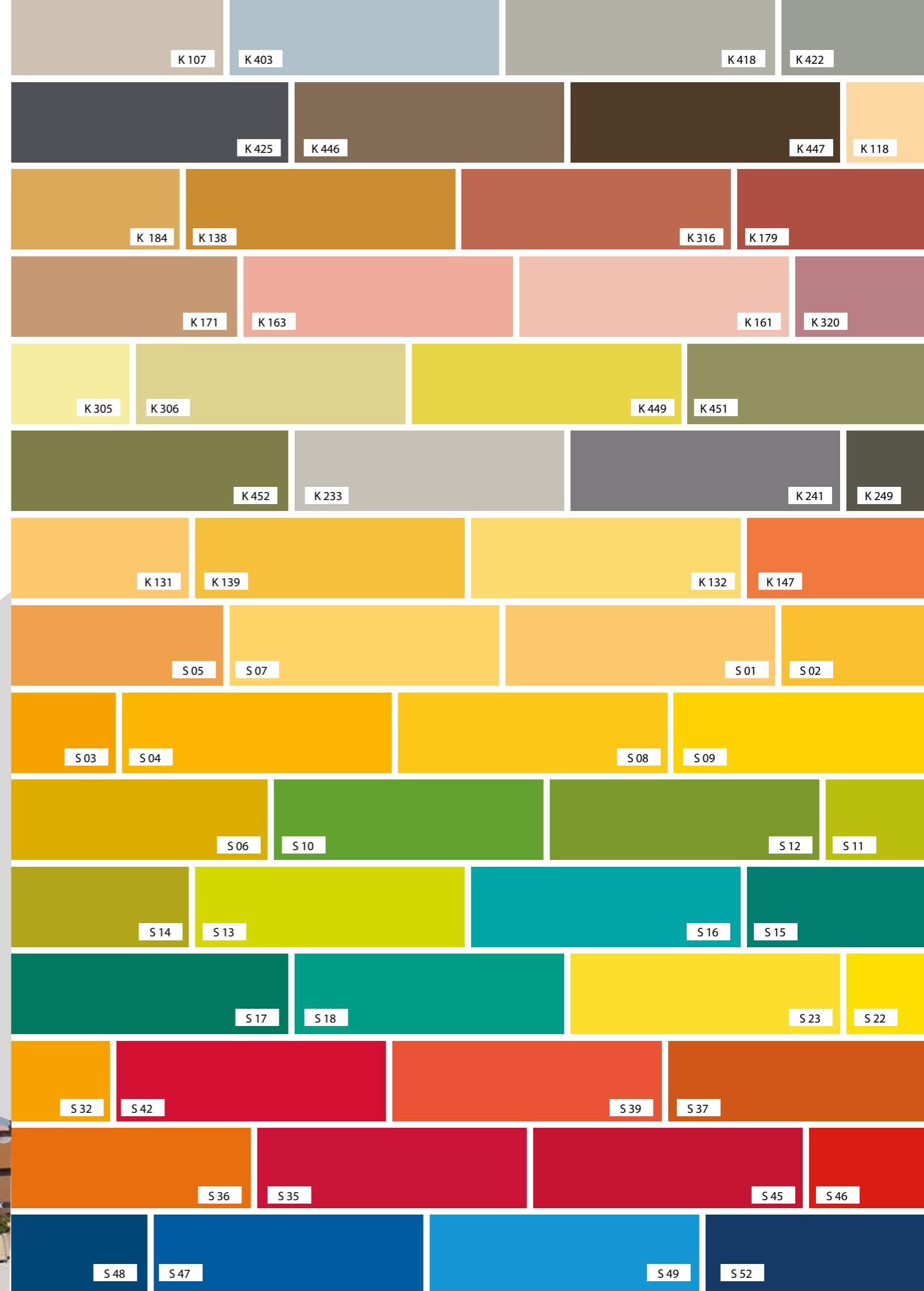
But for projects that both demand and command attention, our Strong range shows our company's true colours. Pillar box red means exactly that – a sharp, distinctive red render, not a dulled down interpretation of the shade.

A vivid turquoise blue that complements the colour of the sea, a bold black that commands the horizon – all possibilities with our Strong swatch where a stand-out architectural statement is the vision.

And when a completely bespoke colour match for a cladding project is required, our range can literally make the right mix – all down to the paint heritage of Aliva's parent company.

That's beautiful colours that break the mould to give buildings style and substance with an insulated render range.

Colours pictured are CMYK representations for brochure printing and represent a small selection from the available ranges.



FABRICK HOUSE

FACT FILE

- ▶ Aliva UK revitalised the exterior of a dilapidated 1960s office block in Cheadle Hulme, as part of its conversion into a modern, stylish apartment building.
- ▶ Fabrick House residents are now benefitting from contemporary micro apartments with a stylish club lounge and a desirable rooftop terrace.
- ▶ Understanding the client's desire to achieve a striking Rainscreen Cladding 'look' on a reduced budget, Aliva designed a novel use of their textured finishes to replicate the rainscreen aesthetic.
- ▶ Using clean blue and white tones and a dark banding effect achieved the client's desired visual impact, while simultaneously meeting current U-Values for the external walls.
- ▶ The Termok8 Minerale system achieves A2-s1 d0 fire rating and therefore complies with Building Regulations for buildings over 18 metres in height.



BLOC HOTEL

FACT FILE

Architects Scott Brownrigg replaced the original specification for an acrylic render with Aliva's insulated render with two colours from the Strong range.

The architect chose Aliva's mineral wool insulated render system to create a first-class thermal fabric for the walls of the hotel.

The black render for the main body of the building and mid grey render spandrels between the windows created a contemporary finish.

The completed building is sharp in appearance and stands out on the Gatwick horizon as a crisp piece of architecture.



bloc

MONEYPENNY



FACT FILE

- ▶ The £15 million Money Penny headquarters was characterised by a design that reflected the telephone switchboard company's desire to set the industry standard for excellence in everything it does.
- ▶ Aliva worked with AEW Architects to create a visually stunning and environmentally sustainable facade comprised of clean, crisp render that wraps in unbroken lines around the building.
- ▶ The Wrexham headquarters' window detailing was accentuated by Aliva's anodised bronze Alucovering aluminium cladding, which draws attention to the large picture windows and gives an extra dimension to the building's external appearance.
- ▶ The render's self-cleaning and anti-algae staining properties also ensure the building maintains its pristine finish.
- ▶ Aliva beat off stiff competition from five other developments to win INCA's Architectural Design Award jointly with AEW.

KNIGHT DRAGON

FACT FILE

- ▶ For this ambitious regeneration scheme at Greenwich Peninsula in London, Aliva's white silicone insulated render was used to give the project a pared-back aesthetic.
- ▶ Architects Jestico + Whiles asked Aliva for a cost effective yet aesthetically pleasing finish for an eight storey residential block of 240 apartments.
- ▶ Aliva supplied 5,500sqm of white silicone insulated render to give the building a crisp, clean look that brought the project in on budget.



TELFORD SCHOOLS



FACT FILE

- ▶ Aliva UK provided cost-effective, insulated render facades for seven schools as part of Telford's Building Schools for the Future project.
- ▶ The bespoke finishes needed to be installed quickly, so as not to impact children's learning, and over large areas.
- ▶ Aliva's Termok8® Minerale insulated render allowed the contractor to keep to a tight schedule of delivery deadlines to complete a number of schools.
- ▶ Despite the requirement for each building to be within the council's guidelines, each had Pantone matched colours to link in with the school's branding and give them an individual appearance using colours from the Standard and Strong ranges.

ABERDEEN AIRPORT HOLIDAY EXPRESS



FACT FILE

- Architects White Ink turned to Aliva UK to provide a visually stunning, highly durable insulated silicone render in white and grey.
- The location experiences extreme weather conditions and the hotel is exposed to the elements and the airport with associated pollution.
- An important requirement was a render that could self-clean for the hotel to retain its fresh, sharp and attractive appearance.
- Silicone allows rainwater to bead on the surface which it can then run down, taking with it dirt and grime that would otherwise attach itself to the damp face of the building.



BEING BOLD IN BRICK

It's an undoubted fact that the humble brick has proven longevity as a stalwart building material. But the weight of the brick on the frame, the shelf angles and additional supporting structure add to the mass of the building and to associated costs in turn.

Creating a range of Clay Brick Slips and Lightweight Brick Slip facades in earthen tones and sand textures through to smooth steely greys has meant the aesthetic of this conventional building material is enjoying a revival on elevations across the UK. Adding the funky finishes that can be realised with Aliva's Listello Slips - glazed, crackled, cool and colourful facades that make a different kind of mark on projects entirely.

Our brick slip product ranges are allowing architects to be bold in brick and to use a traditional material in a most modern way. With the technical advice and support that Aliva provides, towns and cities across the UK are seeing brick coming of age yet again.



CLAY BRICK SLIPS

This series represents the traditional range of UK and European size brick slips in clay and sand tones, smooth and sandfaced textures through to bark finishes. It allows the architect to design a brick wall without the need to build it.

Our range features coloured, fired clay brick slips manufactured as true clay slips. Or if there is a requirement to use a particular clay brick, we can arrange to have these cut as slips to work with our system.

LIGHTWEIGHT BRICK SLIPS

This is a new approach to using brick slips in a slim version that looks identical to traditional slips. It offers a lightweight solution that can be used without height restrictions.

The range consists of both UK and European brick sizes which in many cases can be bespoke manufactured to a particular colour and in some instances texture.

Our lightweight range allows specifiers to develop their own brick and size to give an exclusive feel to their facade.

LISTELLO SLIPS

Here, a traditional method literally meets modern art. Using our clay Listello Slips we are able to glaze not only to any RAL, NCS, Pantone and colour scan but also to bespoke designs (quantity depending).

Our Listello Slips slips are literally larger than life, with our standard slips larger than UK sizes at up to 500mm x 1 metre. The range of colours and designs is only limited by the imagination.



CLAY BRICK SLIPS



AL/CS/001



AL/CS/002



AL/CS/003



AL/CS/004



AL/CS/005



AL/CS/006



AL/CS/007



AL/CS/008



AL/CS/009



AL/CS/010



AL/CS/011



AL/CS/012

LIGHTWEIGHT BRICK SLIPS



AL/LS/001



AL/LS/002



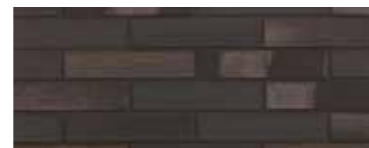
AL/LS/003



AL/LS/004



AL/LS/005



AL/LS/006



AL/LS/007



AL/LS/008



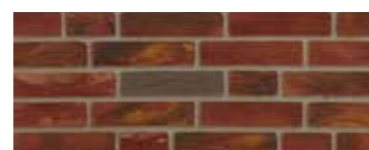
AL/LS/009



AL/LS/010

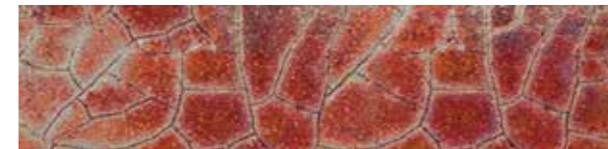


AL/LS/011



AL/LS/012

LISTELLO SLIPS



Craquelado Desgastado



Degradado 1



Craquelado



Degradado 2



Mercurizado



Ruido

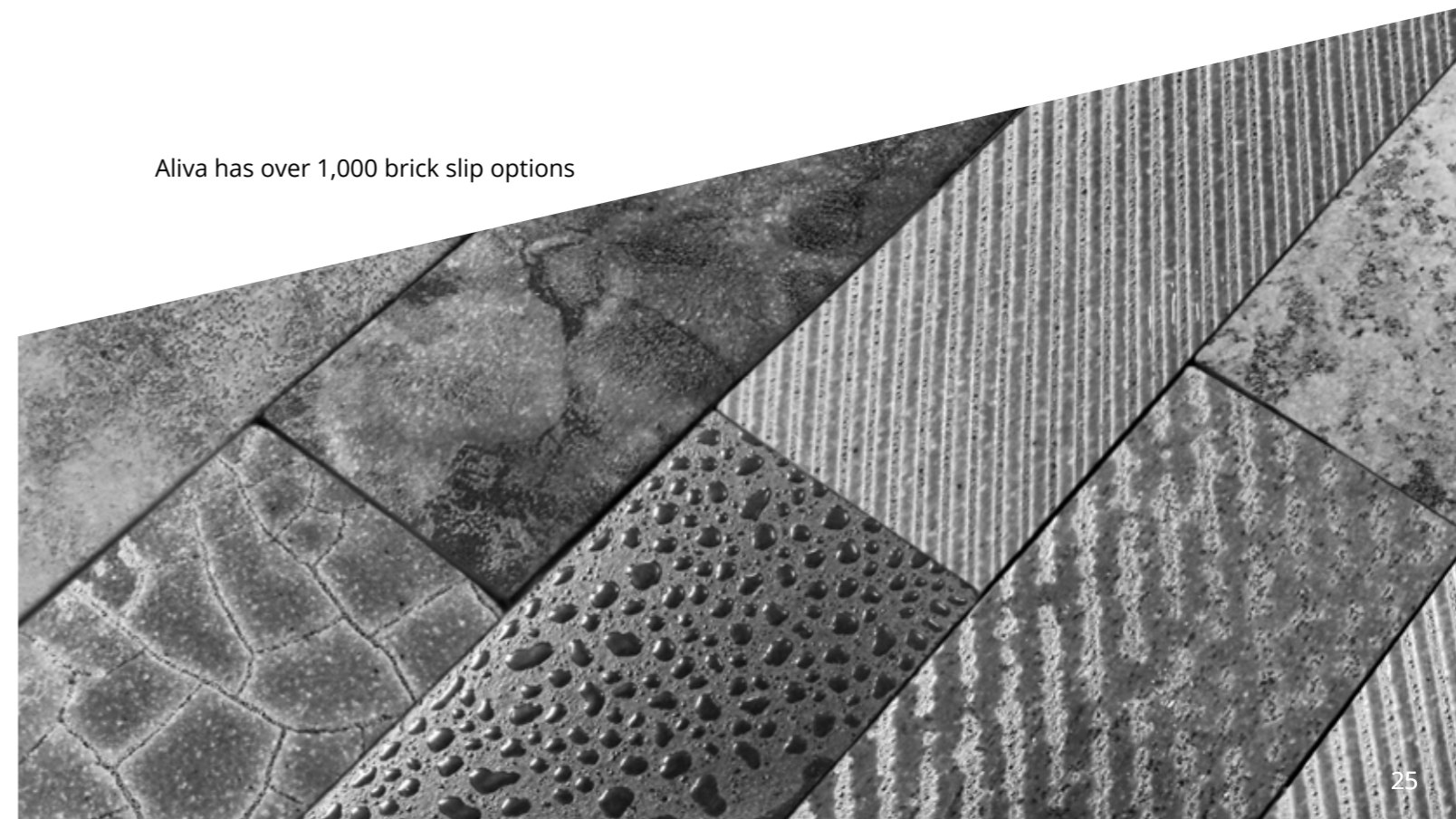


Desgastado



Lineas Ruido

Aliva has over 1,000 brick slip options



ST VINCENTS PLACE



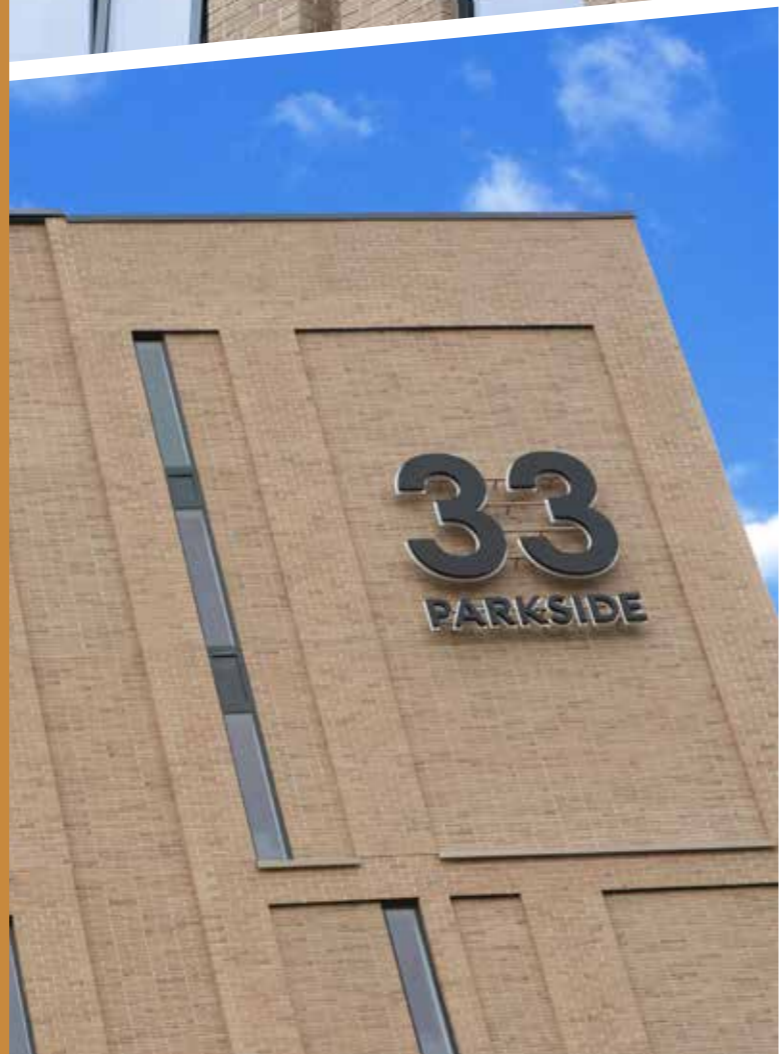
FACT FILE

- ▶ Aliva manufactured a clay slip system that allowed the Unite student village in Sheffield to be constructed and sealed at an early stage to allow progress to be made internally.
- ▶ The brick slip was taken off the critical path and was installed at the end of the project to create a flawless brick finish.
- ▶ This approach meant the student accommodation was ready to open at the start of the academic term.
- ▶ The project also includes Aliva's aluminium Alucovering in 3 powder coated finishes.

33 PARKSIDE

FACT FILE

- ▶ Aliva were appointed to respond to the architect O'Connell East's original design for the building, a 12 storey purpose-built student accommodation block, to find an appropriate lightweight solution for its brick facade.
- ▶ The brief required a lightweight brick slip which could adapt to the approved design and be installed safely in a high-rise environment. It also detailed differentiated depths of piers and exposed columns on the building.
- ▶ The designated system matched the brick type, texture, and light beige/grey colour of brick, significantly reducing the weight of the final render and creating a safe, watertight and high-quality finish.
- ▶ The original brick clad building design included a number of larger elevations where windows would typically be placed. In these areas of mass brickwork, Aliva offered a solution to elevate the appearance by including a relief detail of long linear 320x40mm thin slips delivered at no extra cost to the client.





ST STEPHENS TOWERS

FACT FILE

- ▶ The redevelopment of this central site into contemporary accommodation for up to 700 students required a complete renewal of two 1960s brutal concrete tower blocks.
- ▶ In addition to transforming the aesthetics of the building, the client needed the new façade to be installed from top to bottom in accordance with the original programme schedule.
- ▶ Aliva responded to the architect LSI's vision with an Ariacovering system, consisting of 4,500 sqm of aluminium face panels backed by a honeycomb core and complemented by EWI and a 14mm clay brick slip.
- ▶ The clay brick slip system enhanced the rainscreen systems using a smooth cream brick which integrated with the dark grey aluminium to provide aesthetic contrast.

BOULEVARD HOTEL

FACT FILE

Aliva was tasked with supplying a stone facade for a new five-storey flagship hotel on Blackpool Promenade, overlooked by the Pleasure Beach and on exposed location on the seafront.

Aliva was challenged to replicate and enhance the feel of Blackpool's historic seafront. Aliva identified a stone cladding system that would exceed the striking visual impact the client wanted, without the time and cost implications of installing a traditional stone exterior.

Aliva's eco-friendly Scaglia Carsica stone panels were the natural choice for architect Allison Pike with its elegant appearance and lightweight quality making it viable for both exterior and interior application.

Natural Anthracite was chosen to best complement the dark blue and white external elements at Boulevard Hotel, while also reflecting external materials used on nearby buildings in Blackpool.




BLVD
HOTEL

WH SIEDLUNG MUNIWIS-FAHRWEID



FACT FILE

- ▶ Using Aliva's clay Listello Slips we are able to glaze not only to any RAL, NCS, Pantone and colour scan but also to bespoke designs (quantity depending).
- ▶ Aliva's Listello Slips are literally larger than life, with standard slips larger than UK sizes, in both flat and profiled finishes.
- ▶ The elegance and quality of our Listellos+ system are reflected in this residential complex located on the outskirts of Zurich, in Switzerland. The Simple 6×30, Colina I 6×30 and Colina II 6×30 cover the facades with a smooth and pleasant texture for architect Ken Architekten.
- ▶ The delicate combination of colours, Grey Tucson and Beige Dayton are enhanced with the intense Violet Lima, blending in with the local surroundings beautifully thanks to a finish full of balance and harmony.

SELLY OAK

FACT FILE

Aliva's insulated render and lightweight slips were used on this student accommodation block in Birmingham, an infill site with nowhere to store materials in volume.

Aliva used its lightweight frame and construction process as a site efficient method, with 15,000 slips delivered in a single box.

The final result, a stylish brick facade that is sympathetic with surrounding buildings and a practical solution for a space starved site.



WADE HOUSE



FACT FILE

- ▶ Aliva was asked to deliver a cost-effective, high quality insulated render facade for a 1960s tower block.
- ▶ Wade House was being upgraded and modernised inside and out to meet current building and thermal value regulations.
- ▶ The architect chose an insulated render system in bespoke salmon pink plus a combination of blue smooth traditional and lightweight brick slips to overclad the ten storey building.
- ▶ The brick types were chosen to complement the existing brick structure and surrounding buildings in the village.

BALTIC VIEW

FACT FILE

Aliva was tasked with creating a distinctive finish for Baltic View, a new 130-apartment scheme, reflecting the industrial heritage of Liverpool's creative and digital quarter.

The £20m nine-storey block offers a mixture of one, two and three-bed rental homes alongside nine office units on the ground and first floor.

Aliva designed, supplied and installed an EWI system combined with 5mm lightweight brick slips to achieve a high quality, contemporary aesthetic for the development, in-keeping with the character of the location and suitable for the structural requirements of the building.

The brief required a brick slip system which provided a high-quality finish, that could be installed safely without height restrictions.

Lightweight brick slips, over a mineral wool insulation, has A rated accreditation and was the product of choice for this development



TECHNICAL DETAIL

Aliva's Structural Frame Systems are either a mechanically fixed system with supplementary adhesive or adhesively fixed with supplementary mechanical fixings. They are directly fixed to the substrate and therefore do not create a cavity or void behind the systems. This increases the effectiveness of the systems when dealing with fire spread.

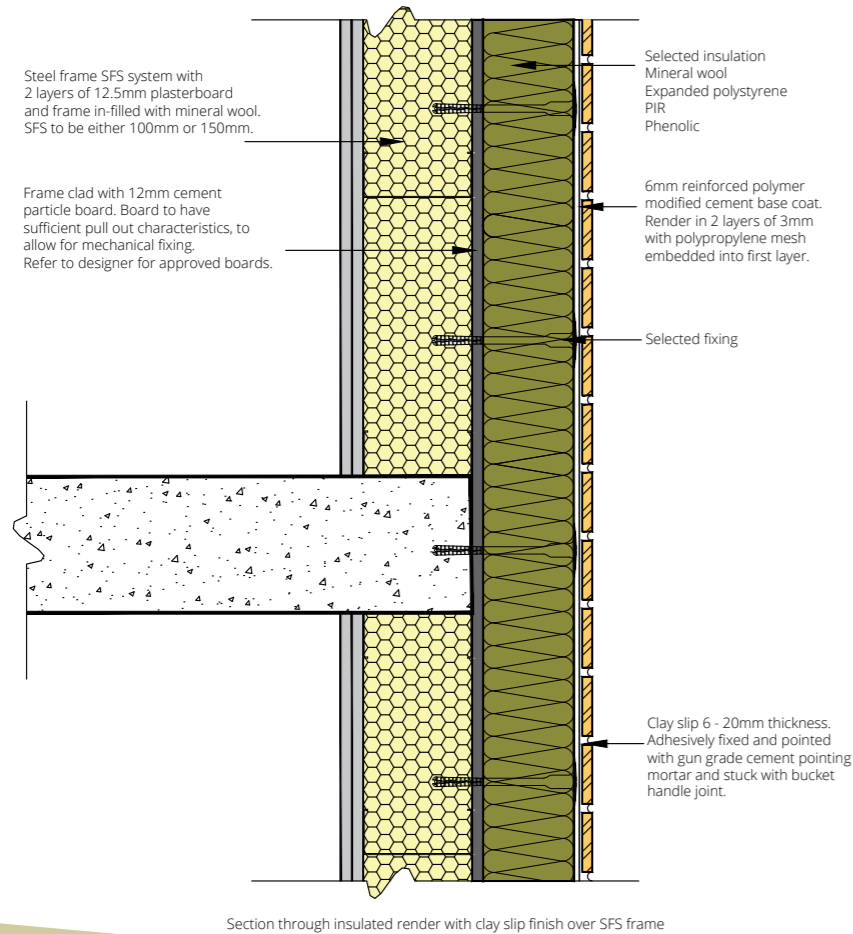
The Termok8® Minerale systems achieve Euro Class A1 & A2, S1, d0 to BS EN 13501 and are classed as being of limited combustibility, allowing use without height or boundary restriction.

The Termok8® Classico, Grafite, Slim and Phenolic achieve Euro Class B, S1, d0 or B, S2, d0 and can be used in conjunction with mineral wool fire barriers up to 18 metres in height.

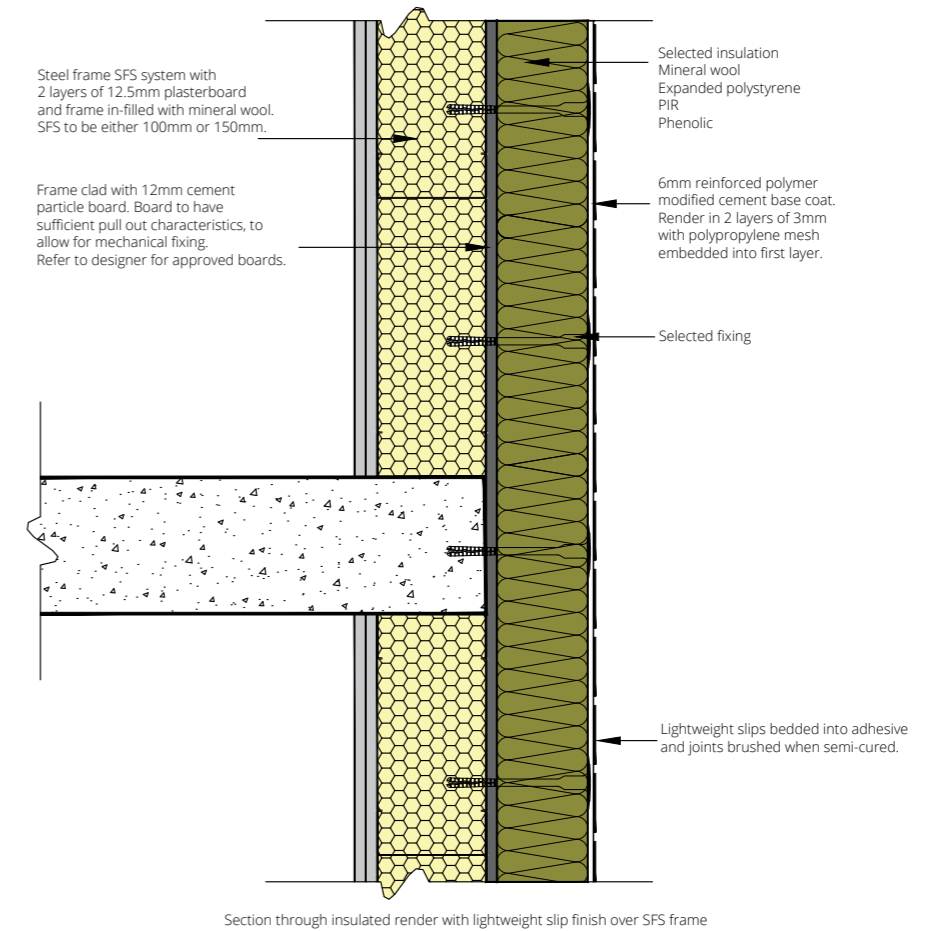
The Termok8® Meccanico Rail Systems although allowing for a nominal cavity, have been tested to BS 8414 parts 1 and 2, and have achieved BR135 classification, allowing use without height restriction.

The illustrations below indicate typical details for SFS constructions. Details for other construction methods, including masonry, are available from Aliva UK and include systems where a drained cavity is required.

STRUCTURAL FRAME SYSTEM WITH CLAY SLIP



STRUCTURAL FRAME SYSTEM WITH LIGHTWEIGHT SLIP



STRUCTURAL FRAME SYSTEM WITH TEXTURE

