

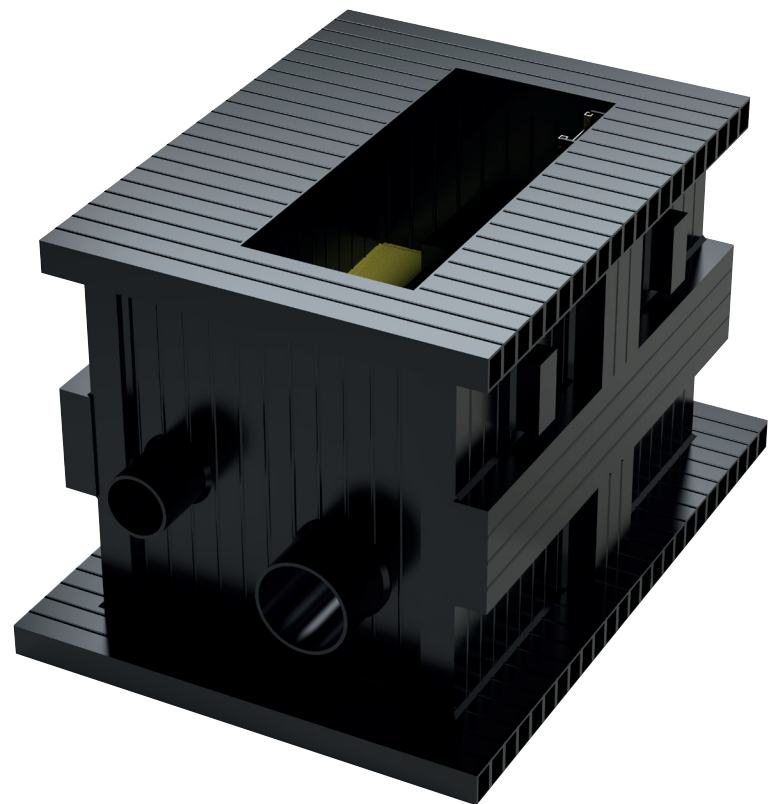
SDS AQUA-XTRACT™

CSO Waste Water Treatment System

SDS Aqua-Xtract™ is a revolutionary prefabricated CSO system which provides a bespoke solution for preventing sewer litter from entering into, and polluting, watercourses and water bodies, whilst still providing the required hydraulic flood relief and guarding against sewer flooding in extreme rainfall events.

SDS Aqua-Xtract™ incorporates an innovative chamber design, manufactured from Weholite HDPE plastic material, which houses a sophisticated screen mechanism to remove solid waste from the sewer system during flood conditions.

- *Bespoke sizes*
- *Manufactured offsite*
- *Modular construction*
- *Light weight*
- *Quick installation*
- *Easy onsite connection*
- *Resistant to H₂S and corrosion*
- *Safe working environment*

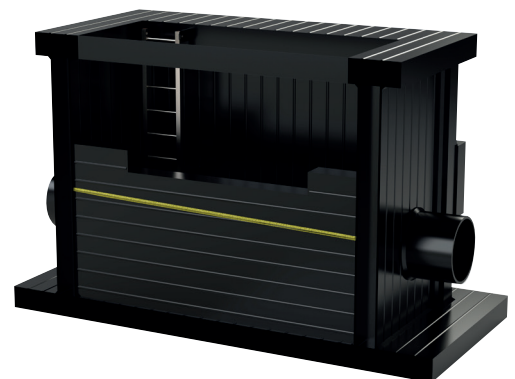
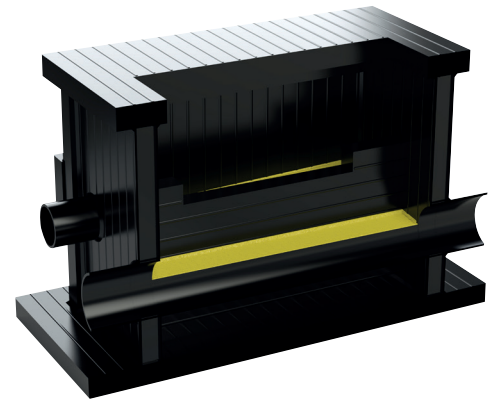
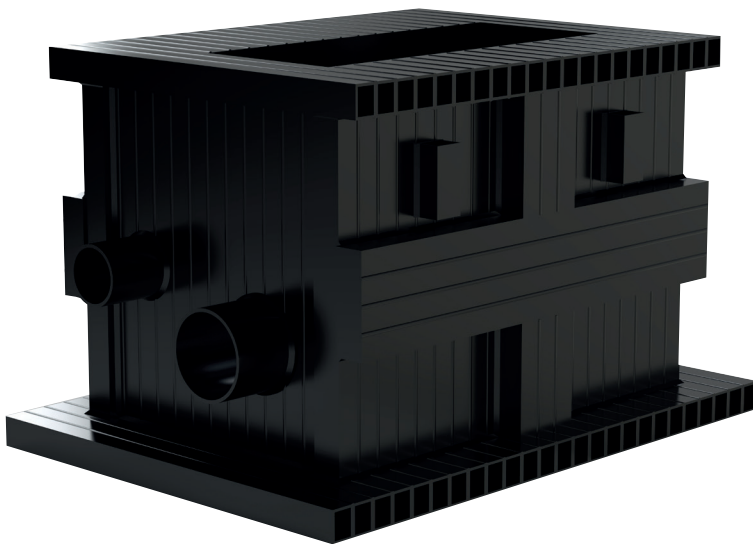


Weholite HDPE is unique in obviating the need for concrete inside or outside to provide structural integrity.

SDS Aqua-Xtract™'s removal of sewer litter pollution directly benefits Water Companies'

efforts to improve the quality and aesthetics of the natural water environment and helps counter any negative publicity whilst also reducing the risk of prosecution for a pollution incident.

Features	Benefits
Bespoke manufacture off-site.	Each CSO is manufactured to the specific requirements of the site.
Factory production.	Build quality and consistency of fit and finish are assured and superior to other production processes. Provides a controlled environment to ensure dry, predictable and safe working conditions onsite.
Manufactured from Weholite HDPE plastic.	Lower carbon impacts than concrete construction. Robust hydraulic properties and corrosion resistant. Easy onsite welding of separate sections.
Modular design.	Capital costs are estimated at up to 40% less than existing designs. System is supplied ready to use immediately upon installation and connection.
Design optimised for external access.	Simplifies maintenance procedures by providing easy access to screen and flow channels, flooring and landing platforms.
Estimated 2 tonnes' average weight saving over a comparable concrete system.	Easier transportation and unloading. Installation completed in just a few hours, rather than days. Lower carbon footprint.
Sections can be delivered separately.	Avoids transportation issues and helps speed up installation and connection.
Light weight means no heavy lifting equipment is required.	Saves cost and eliminates logistical potential problems of access to, and manoeuvrability around, site. Reduces Health & Safety requirements.
Passive device with no moving parts.	Reduces installation and operating costs by removing the need for powered mechanical screen cleaning.
Designed to resist groundwater pressures.	Ensures system reliability.
Totally resistant to hydrogen sulphide (H ₂ S).	Can be used in harsh conditions.
Unique screening mechanism.	Prevents sewer litter from causing aesthetic environmental pollution and costly clean-up activities. Presents a greater opportunity for nature-based treatment solutions to be employed downstream.



A-X CSO DS/0921