

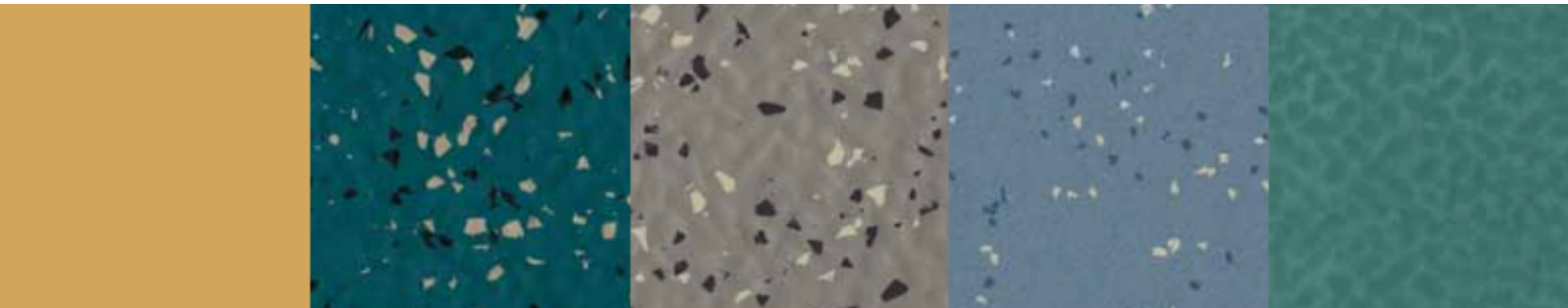


Jaymart

**Rubber
Flooring
Systems**

**Ardesia
Linea Stone**

**Rubber Flooring
Colours &
Technical
Information**



Tough choice

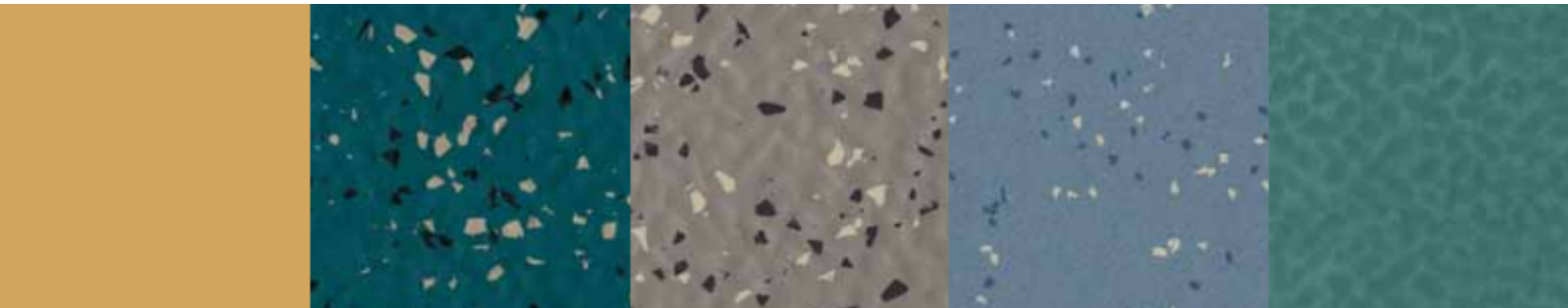
For decades, rubber flooring has been one of the world's most popular hard-surface flooring types for a wide variety of indoor situations, such as airports, department stores, kindergartens, schools, hospitals, offices and residential buildings. Now, after many years of research, development and heavy testing, Jaymart brings you a new generation of rubber floorings. Jaymart's Rubber Collection is a range of innovative products that are tougher, more flexible and more suitable in more situations than ever before. These floorings are made of natural and synthetic rubber, using eco-friendly colour pigments and mineral fillers, yet every product in Jaymart's range is characterised by its increased load-bearing capacity and suitability for installation under the most varied and difficult conditions. In heavy traffic situations, rubber flooring has for a long time been the obvious choice. It's safe, durable, flexible, low maintenance, and it's tough. Now, with the range and improved characteristics of Jaymart's rubber flooring, making a tough flooring choice has never been easier



Responsible choice

Jaymart's rubber flooring has been developed to improve performance and safety while also being more ecologically responsible. It has a lifetime cost that is well below most other flooring materials, and can also now be used in nearly any flooring application, including directly above under-floor heating. The floorings are compatible with eco-friendly and solvent-free dispersion adhesives, they contain no PVC, formaldehyde, cadmium, asbestos, CFHC or plasticisers, and will not release any harmful substances in any situation.

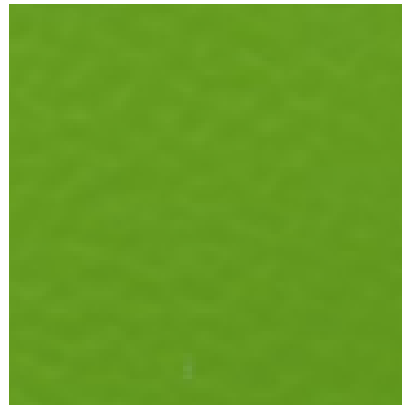




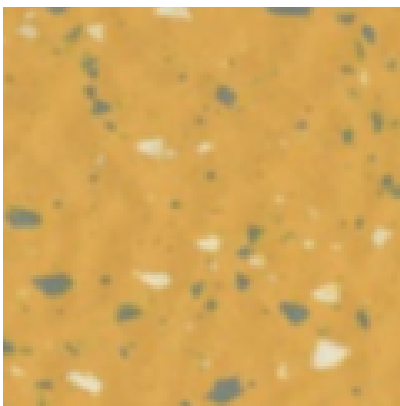
Versatile choice

Rubber is a versatile, heavy duty, environmentally friendly floorcovering.

Jaymart can offer a wide range of rubber flooring in rolls and tiles, in an extensive and vibrant colour palette for use in every application imaginable such as Gyms, Airports, Banks, Barracks, Public Buildings, Apartment Blocks, Chain Stores, Cinemas, Colleges, Office Buildings, Department Stores, Factories, Hospitals, Hotels, Homes, Sports and Leisure Centres, Stadia, Theatres, Universities



At A Glance

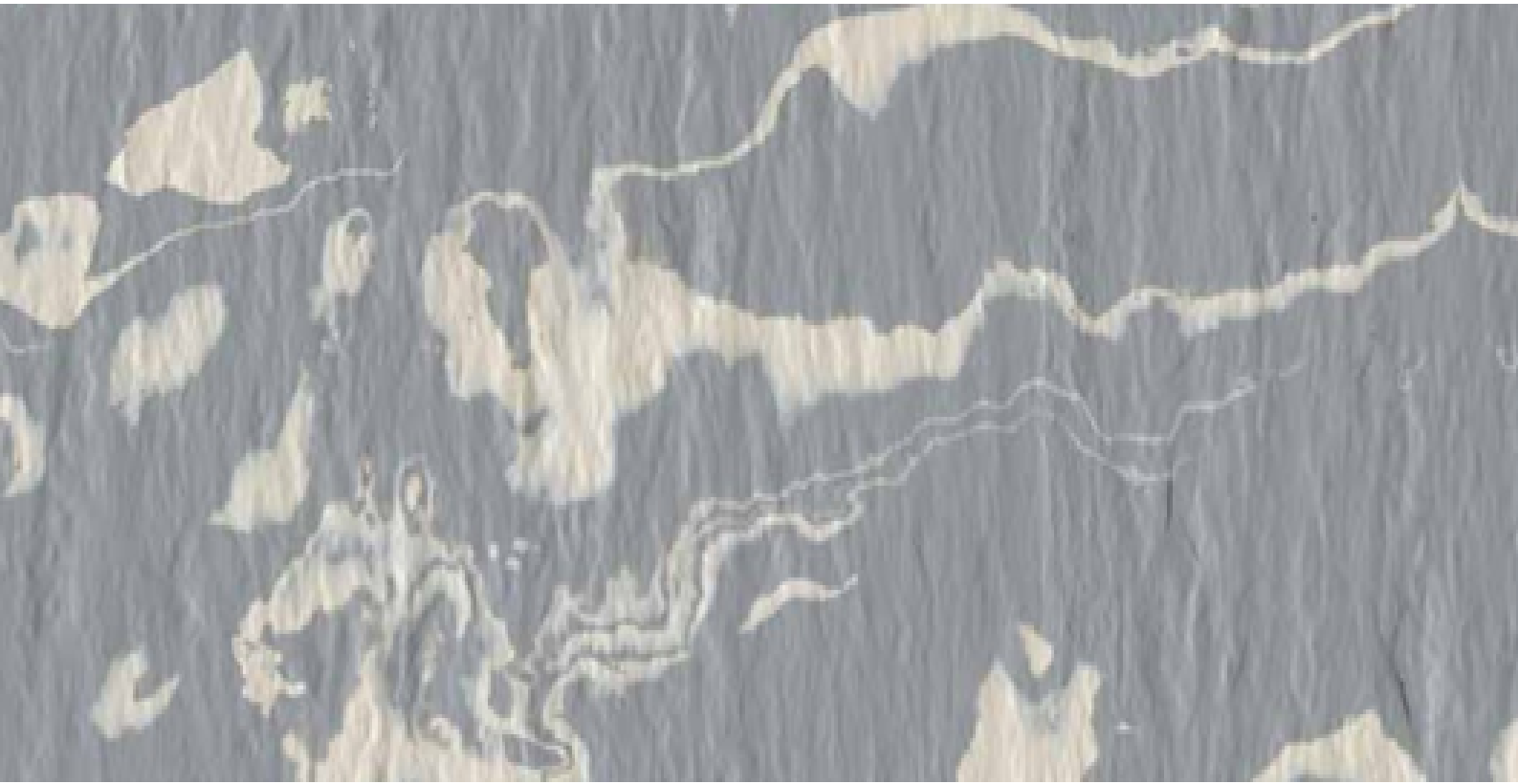


Our range of rubber flooring offers the following key features and benefits

- Rubber is extremely durable and hardwearing leading to long life expectancy and further conservation of material resources.
- Jaymart rubber flooring is coated with a factory applied finish to prevent marking and making it easier to maintain reducing cleaning costs and use of harmful chemicals to maintain the floorcovering.
- Rubber is environmentally friendly - it contains no PVCs, Plasticers or halogens. Leading to a healthier environment in the application
- Toxologically safe
- Flame retardant – Rubber flooring guarantees low Opacity and smoke toxicity in the case of fire.
- Good resistance to chemicals (Even diluted acids!) and oils

Jaymarts range of superior quality rubber flooring is a bespoke range made especially for your project. Available in a phenomenal range of designs and colours there is something for every type of project and application. We can also work with you on bespoke colours subject to minimum order quantities. Please consult with our technical team for more information.

ARDESIA LINEA STONE



The new Ardesia Stone Line represents the excellence of Italian design and creativity.

A revolutionary rubber floor, with a high aesthetic appeal, ideal for charming and atmospheric environments.

Each tile is a unique piece, in a fascinating play of colors and combinations that can also be customized, for a product that has no equal.

Ardesia Linea Stone rubber flooring featuring marble design patterns and a beautiful variety of colors.

Excellent flooring for residential or commercial use.

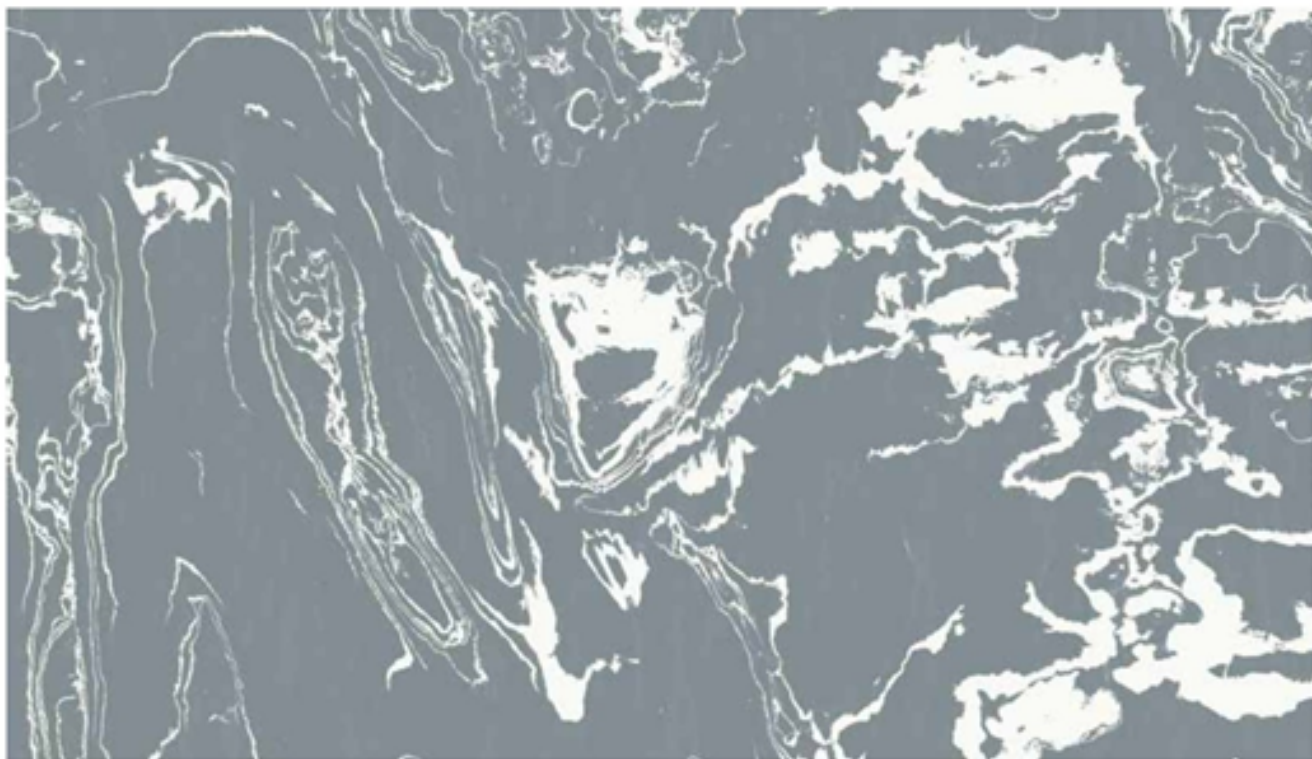


**Please click here to see technical information on
ARDESIA LINEA STONE**

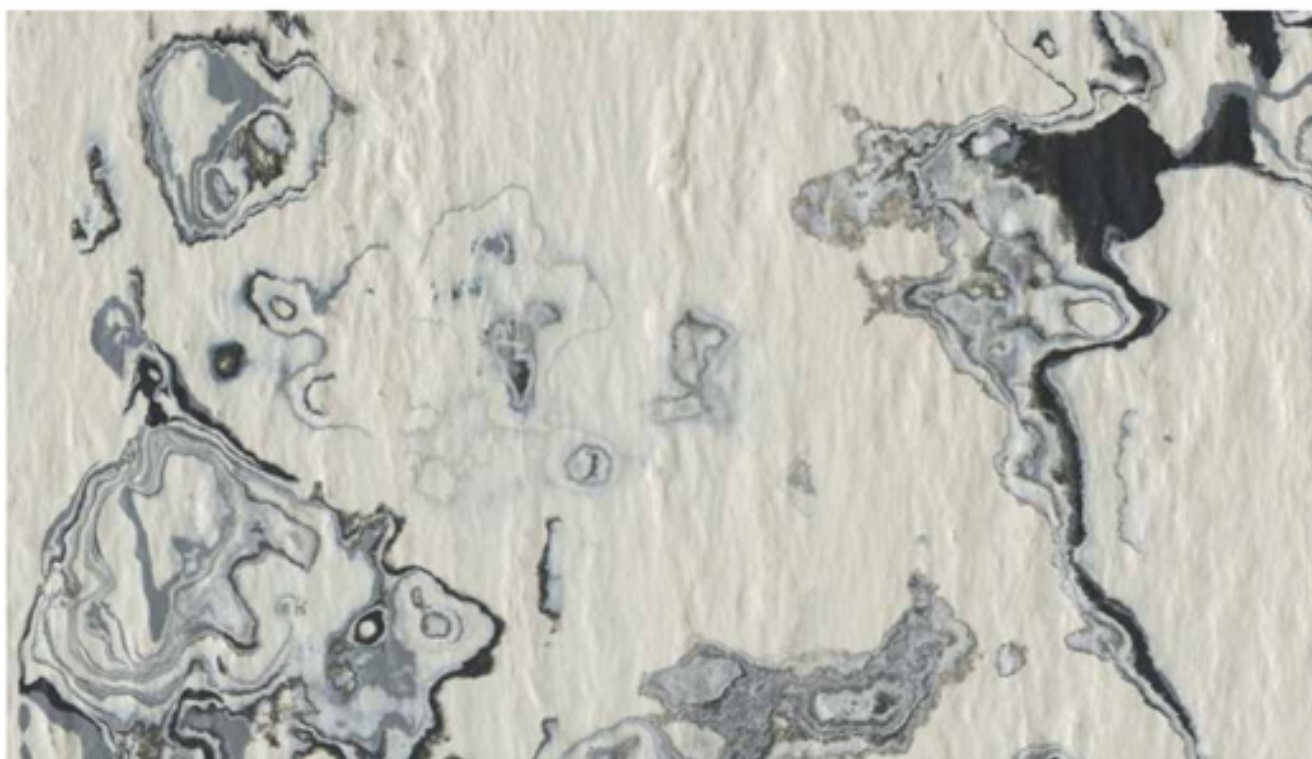


Jaymart's range of superior quality rubber flooring is a bespoke range made especially for your project. Available in a phenomenal range of designs and colours there is something for every type of project and application. We can also work with you on bespoke colours subject to minimum order quantities. Please consult with our technical team for more information.

ardesia LINEA STONE



ST010 *Slate*



ST004 *Marble*

CE
EN 14041



1000x1000mm

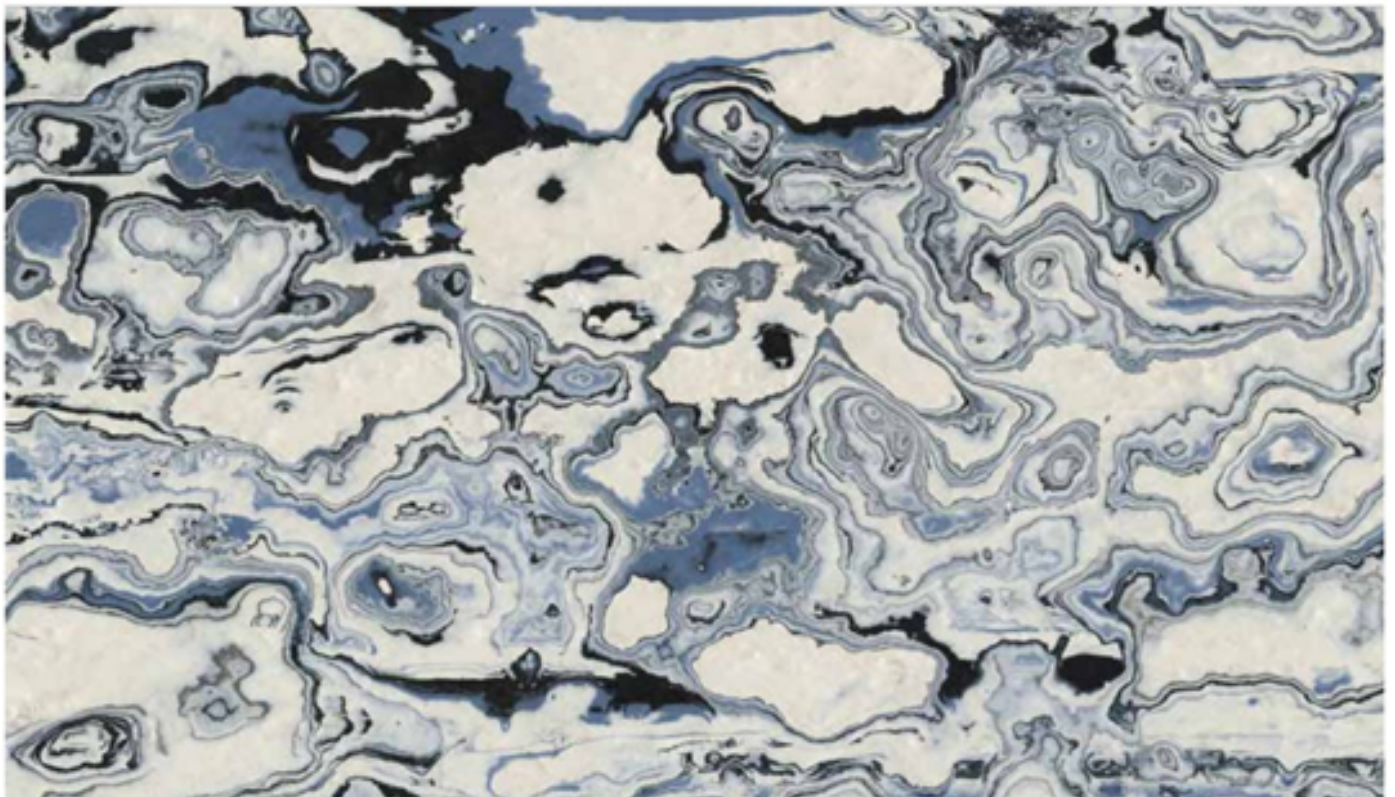
mm 5,0 kg/m² 7,5 mm 8,0 kg/m² 11,9

5,0 mm 8,0 mm

ardesia LINEA STONE



ST009 *Plutonic*



ST002 *Resin*

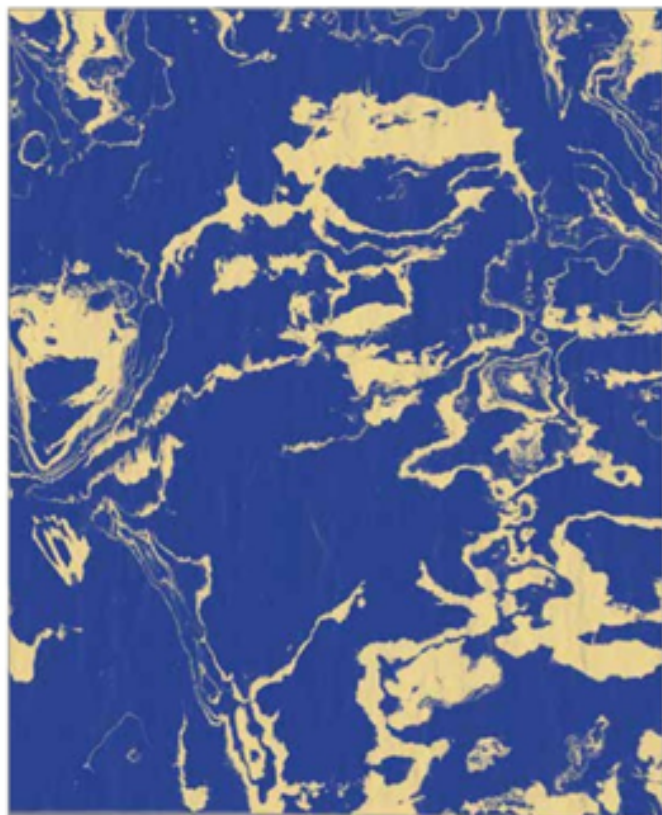


1000x1000mm

mm 3,5 kg/m² 5,7

3,5 mm

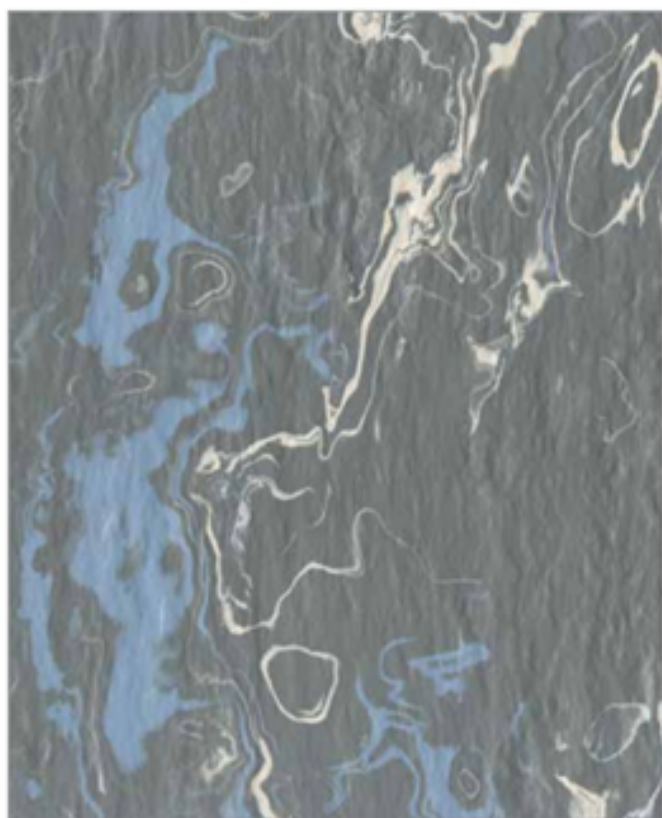
ardesia LINEA STONE



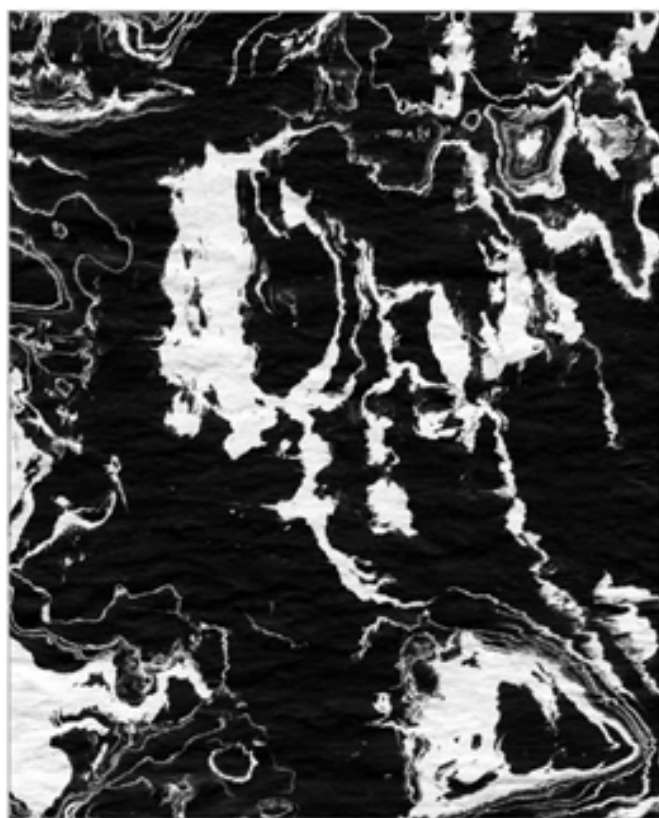
ST014 *Geopersia*



ST027 *Gallet*



ST018 *Pumice*

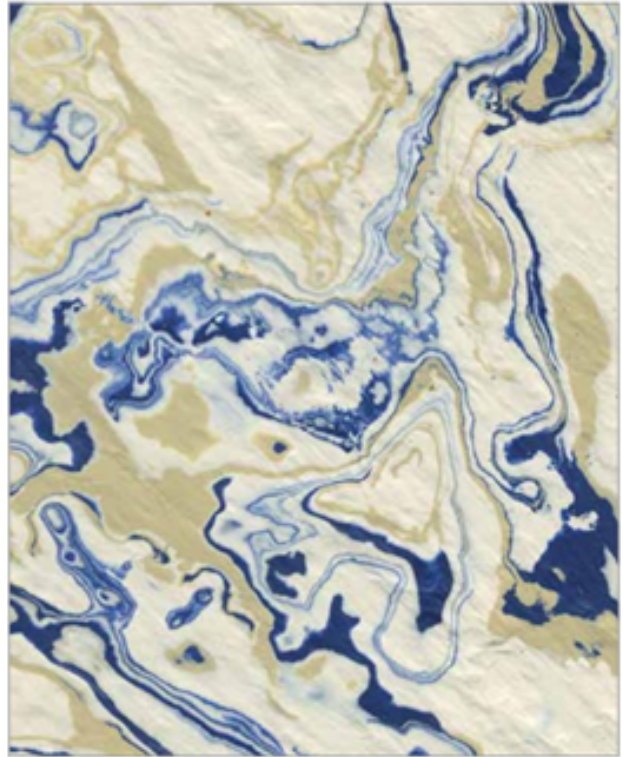


ST022 *Gabbro*

ardesia LINEA STONE



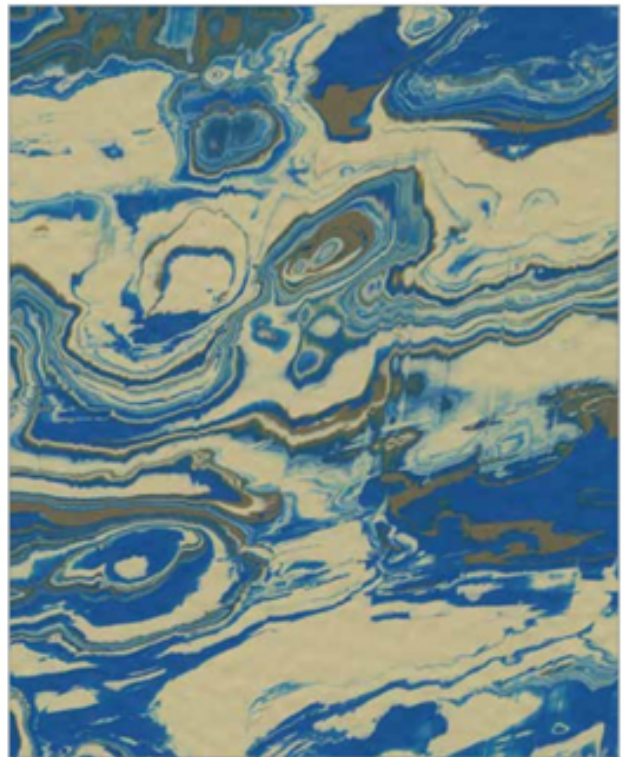
ST001 *Halite*



ST008 *Limestone*

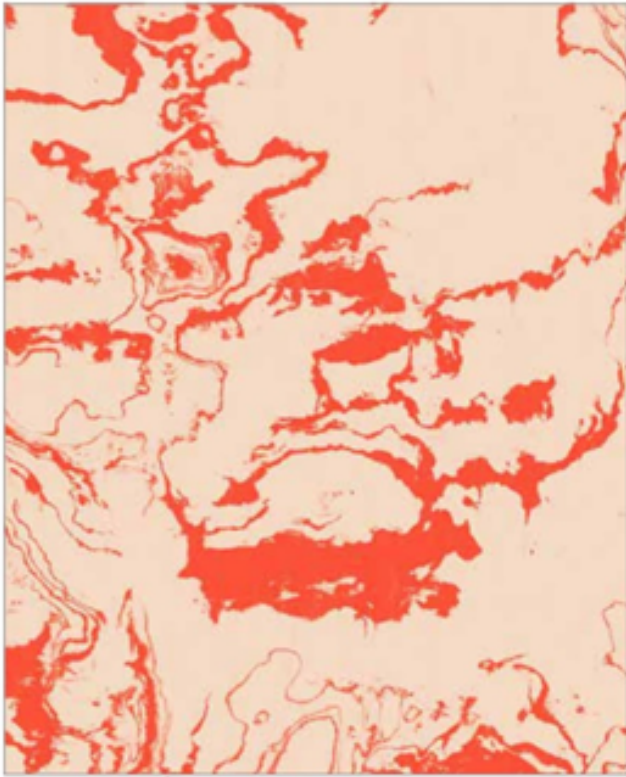


ST013 *Stylolite*

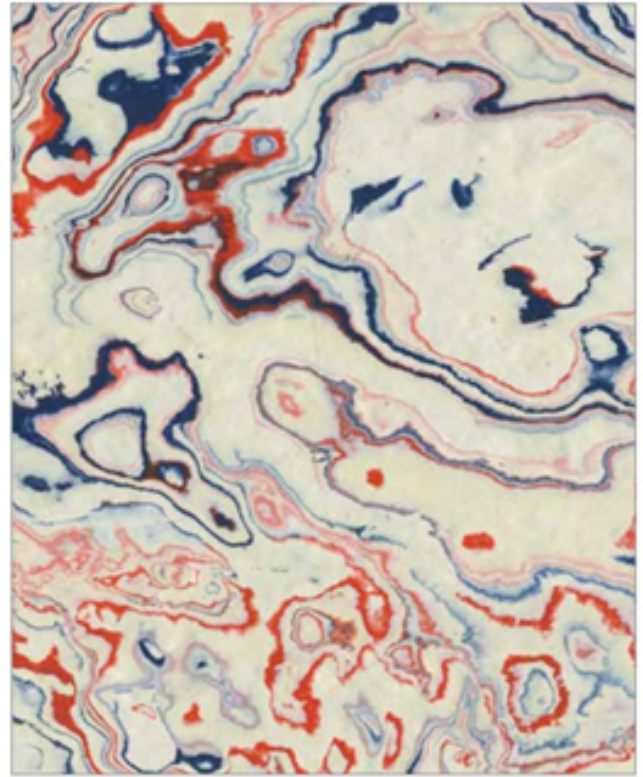


ST028 *Slurry*

ardesia LINEA STONE



ST019 *Ambient*



ST007 *Breccia*



ST005 *Quarry*



ST006 *Aris*

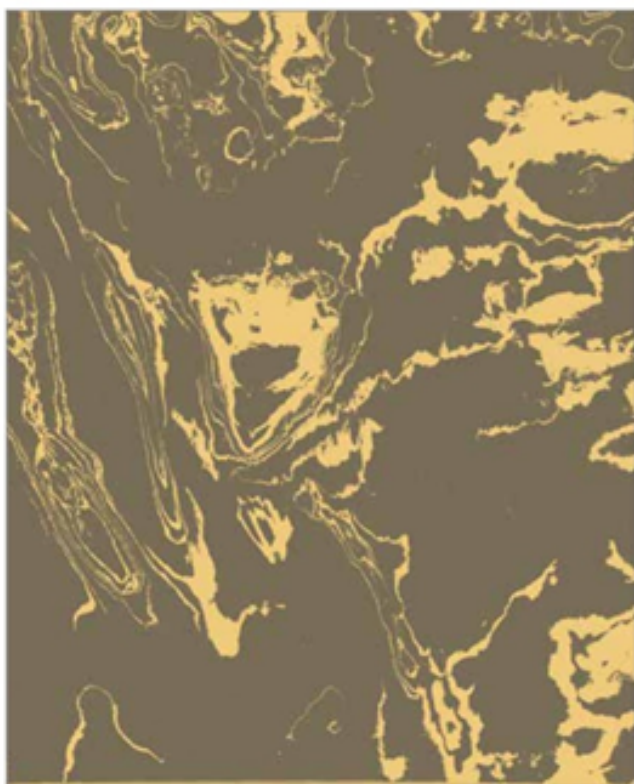
ardesia LINEA STONE



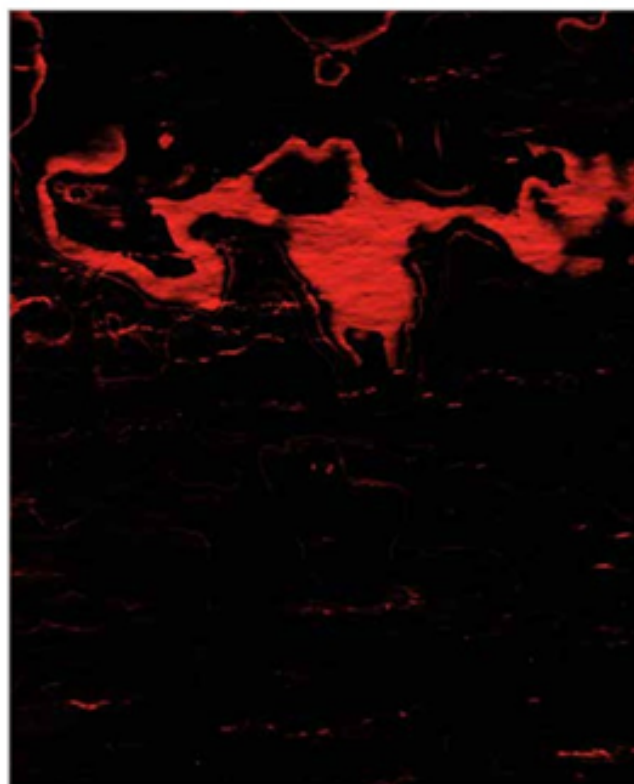
ST012 *Brownstone*



ST024 *Cantera*

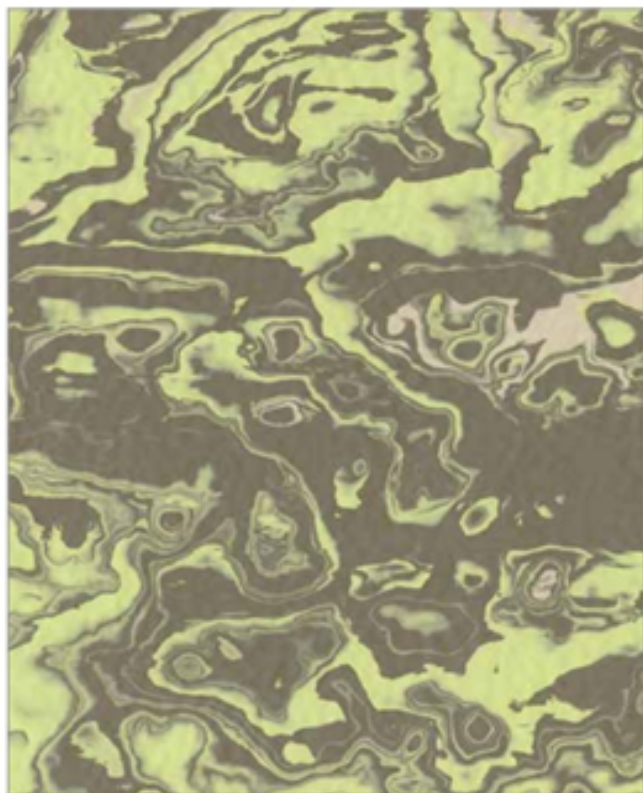


ST017 *Bedrock*

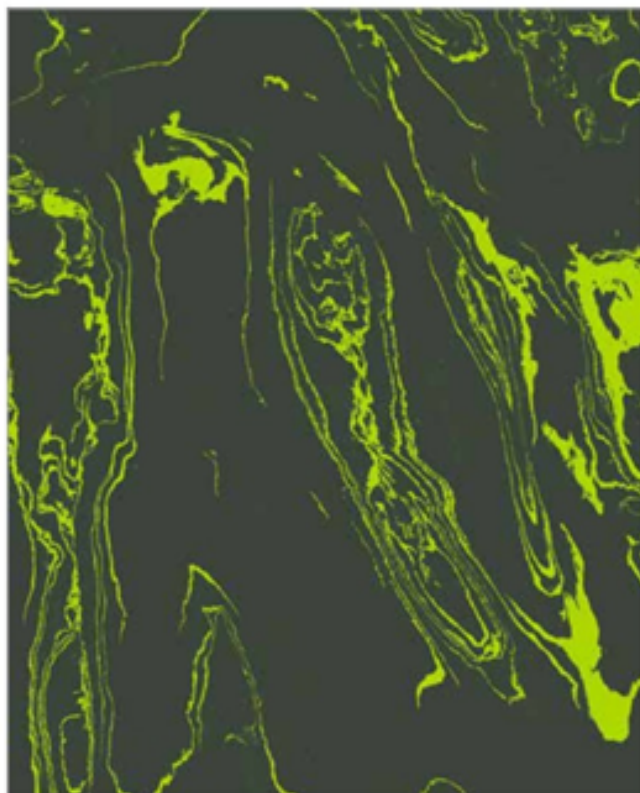


ST021 *Flame*

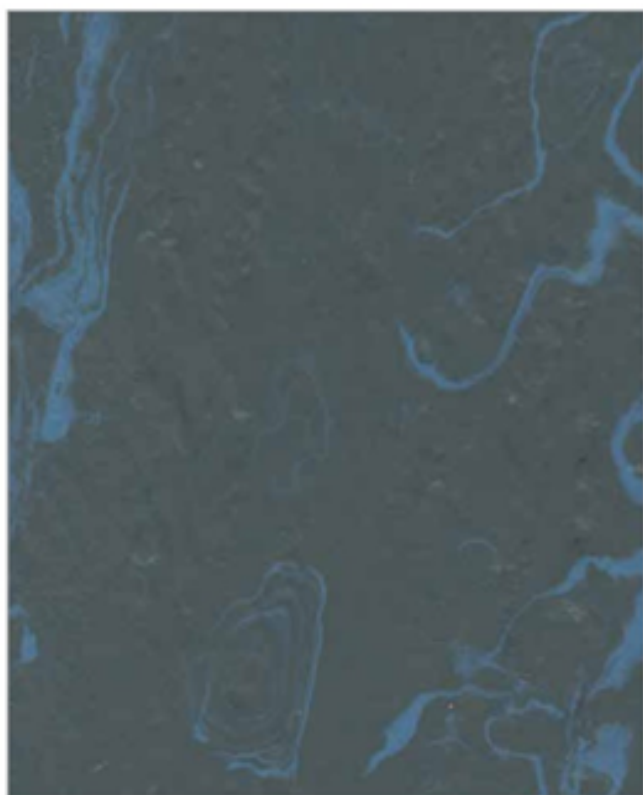
ardesia LINEA STONE



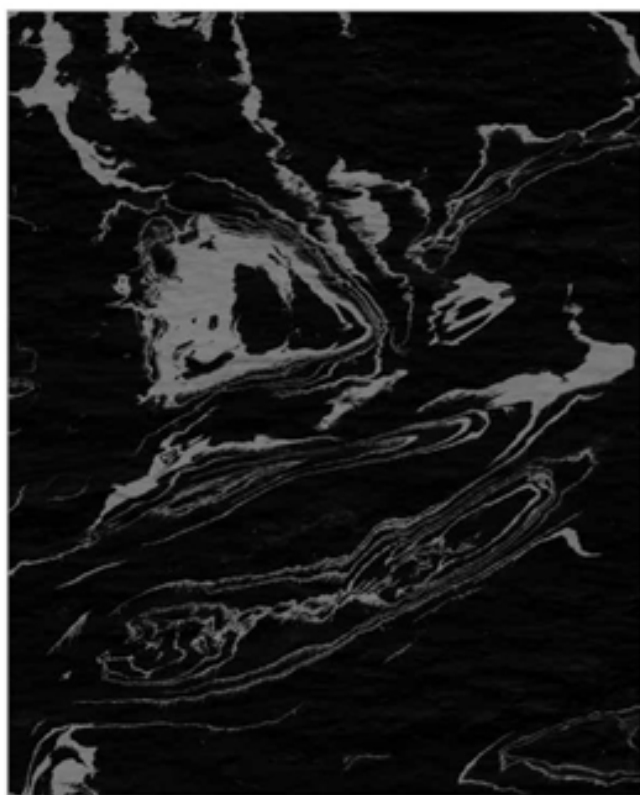
ST015 *Dolomite*



ST023 *Obsidian*



ST025 *Onyx*



ST026 *Basalt*

ardesia LINEA STONE



ST020 *Entasis*



ST003 *Ashlar*



ST016 *Alkaline*



ST011 *Anchor*

ardesia.

LINEA STONE

Proprietà secondo EN 14 041 Properties according to EN 14 041	U.M.	Norma di prova Test method	Requisiti Requirements	Valori medi risultati da collaudi della produzione in corso Average test results from running production				
Spessore complessivo Overall thickness	mm	UNI EN ISO 24346	± 0,15 mm	3,2 mm homog.	3,5 mm homog.	5,0 mm loose lay	8,0 mm loose lay	15,0 mm loose lay
Dimensione lati Side Length	mm	UNI EN ISO 24342	± 0,15 %	1000 x 1000 mm (nominal size)				
Spessore strato di usura Thickness of wear layer	mm	UNI EN ISO 24340	1,8 - 2,2 mm	-	-	2,0	2,0	2,0
Peso Weight	kg/m ²	UNI EN ISO 23999	-	4,2	5,7	7,5	11,9	21,4
Durezza Hardness	Shore A	ISO 7619 - 1	≥ 75	≥ 84	≥ 84	≥ 81	≥ 81	≥ 81
Abrasion Abrasion	mm ³	ISO 4649 (met A -5N)	≤ 250 mm ³	≤ 130				
Resistenza alle macchie Resistance to stains	-	EN/ISO 26987	-	Depending on concentration and time of exposure.				
Effetto sedia con rotelle Castor chair effect	-	EN 425 (wheels type W)	-	Suitable				
Deformazione residua Residual indentation	mm	UNI EN 24343	≤ 0,25 mm	≤ 0,06	≤ 0,06	≤ 0,07	≤ 0,06	≤ 0,05
Classificazione al fuoco Fire behavior	-	EN 13501-1	-	Bfl-s1				
Inflamabilità superficiale CPSC FF 1-70 Surface Flammability Standard CPSC FF 1-70	-	ASTM D2859	-	passes	-	passes	passes	-
Densità di fumo (fiamma) Smoke Density (Flaming) standard	Dmc	ASTM E662	≤ 450 (Dmc)	passes	-	passes	passes	-
Densità di fumo (senza fiamma) Smoke Density (Non-Flaming) standard	Dmc	ASTM E662	≤ 450 (Dmc)	passes	-	passes	passes	-
Flusso Radiante Critico Codice NFPA 101 Critical Radiant Flux NFPA Life Safety Code 101	watts/sq cm	ASTM E648	≥ 0,45 (Class 1)	Class 1	-	Class 1	Class 1	-
Effetto bruciatura da sigaretta Effect of burning cigarette	met A ≥4 met B ≥3	EN 1399	-	In accordance				
Stabilità dimensionale Dimensional Stability	%	UNI EN ISO 23999	± 0,40 %	± 0,2 %				
Isolamento acustico Acoustic insulation	dB	UNI EN ISO 10140-3	-	Up to 9	Up to 10	Up to 13	Up to 15	Up to 18
Resistenza allo scivolamento Slipping resistance	class	DIN 51130	≥ R9	R9				
Coefficiente dinamico di attrito Dynamic coefficient of friction	value	UNI EN 13893	≥ 0,30	05 (0-0,30)				

Il fabbricante si riserva la facoltà di modificare al meglio in qualsiasi momento le caratteristiche del prodotto.

The manufacturer reserves the right to modify the product characteristics at any time.



Jaymart



**Jaymart Rubber &
Plastics Limited**
**Roman Way, Crusader
Park,**
Warminster
BA12 8SP

Tel 01985 218994
Email:
sales@jaymart.co.uk
www.jaymart.co.uk