



Merlin House
Seven Mile Lane
Borough Green
Sevenoaks
Kent
TN15 8QY

Enquiries

0800 304 7616

International

+44 (0) 1732 882387

Fax

0845 450 7486

Email

info@fixfast.com



Certificate number 10905
ISO 9001, ISO 14001
OHSAS 18001

Maximum reliability. Minimum fuss.



Selector Guide

Kingspan KingZip IP

Kingspan

Fastener Systems and Sealing Products

Contents

| | |
|------------------------------------|--------|
| Products for Specific Applications | 3 - 7 |
| Accessories | 8 |
| Technical Data | 9 - 10 |
| Technical Notes | 11 |

Introduction to Fixfast

Fixfast design, manufacture and supply specialist building fasteners and components for the walls and roofs of industrial, commercial and larger residential buildings. We collaborate with major building envelope system manufacturers, such as Kingspan, to provide them and their clients with engineered fastening and sealing solutions.

This selector guide has been created as an easy to use reference document, identifying the most common fasteners and components for use when installing the Kingspan KingZip IP panel system.

Full technical data for these products along with application uses can be found on our website at www.fixfast.com by searching for the product.

Our specification team can assist in providing NBS specifications for specific projects, whilst our customer services team can answer questions regarding the usage or ordering of Fixfast products.

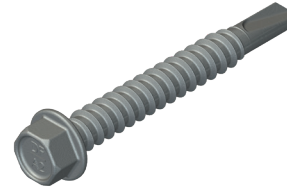
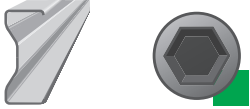
If you have any queries regarding our products or services then please do contact our customer services team on 0800 304 7616 or by emailing sales@fixfast.com.

KingZip IP primary fixing - halter to cold rolled steel 1.2 - 3.0mm

Use DrillFast® stainless steel halter fasteners

8mm hex head, use Fixfast GreenDrive.

Use 2 fixings per halter for the KS500 and 3 fixings per halter for the KS1000.



Fastener Code

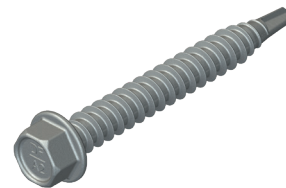
DF3-SS-6.0 x 45

KingZip IP primary fixing - halter to timber

Use DrillFast® stainless steel halter fasteners

8mm hex head, use Fixfast GreenDrive.

Use 2 fixings per halter for the KS500 and 3 fixings per halter for the KS1000.



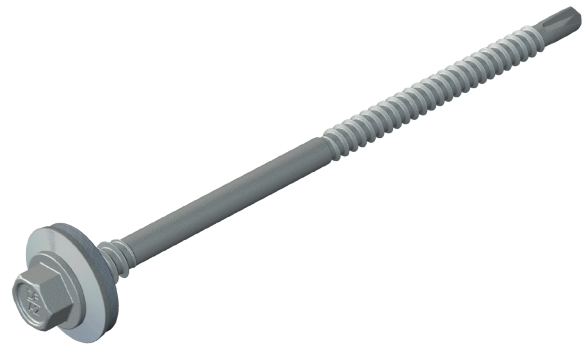
Fastener Code

DF2-SS-6.0 x 45

KingZip IP primary fixing to light steel at verge side

Use DrillFast® stainless steel high thread fasteners

8mm hex head, use Fixfast GreenDrive.

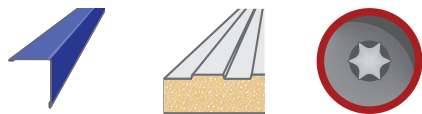


| To suit panel size (mm) | Fastener Code |
|-------------------------|-------------------------|
| 45 | DF3-SS-HT-A19-5.5 x 85 |
| 90 | DF3-SS-HT-A19-5.5 x 130 |
| 110 | DF3-SS-HT-A19-5.5 x 150 |
| 124 | DF3-SS-HT-A19-5.5 x 150 |
| 147 | DF3-SS-HT-A19-5.5 x 180 |

KingZip IP end lap stitcher

Use Drillfast low profile stainless steel stitching fastener with bonded washer

Low profile TX25 head, use Fixfast RedDrive.



Fastener Code

DF3-SSA4-P-S19-5.5 x 35

Vapour sealant

Use A Class butyl strip sealant



| Sealant Code | Dimensions (mm) | Roll Length (m) |
|--------------|-----------------|-----------------|
| A-6 dia x 8 | 6mm bead | 8 |

PVC foam tape for all internal air sealing

Use PVC foam air sealing tape



| Sealant Code | Thickness x width (mm) | Roll Length (m) |
|-----------------|------------------------|-----------------|
| AST-6 x 20 x 12 | 6 x 20 | 12 |

Fire resistant construction foam for filling ridge and hip junctions

Use Firefoam B1



| Sealant Code | Cartridge Size (ml) | Fitting |
|------------------|---------------------|----------|
| FIREFOAM-B1-GUN | 750 | Screwtop |
| FIREFOAM-B1-HAND | 750 | Manual |

Bedding sealant for filler blocks at ridges and hips. Also for use in internal air sealing applications

Use Seelex BR gun grade butyl rubber sealant

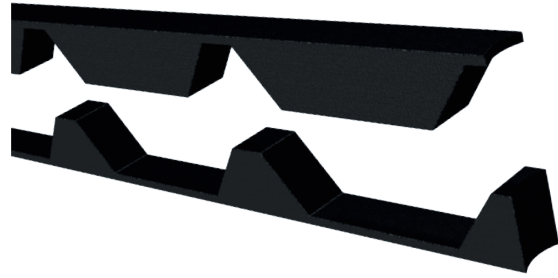


| Sealant Code | Cartridge Size (ml) | Colour |
|--------------|---------------------|---------------|
| SEELEX-BR | 380 | Grey or White |

EPDM Foam – Filler blocks

Use EPDM foam fillers

Also available in fire resistant material.
Please enquire for details.



Sealant Code

EPDM FILLER - Kingzip IP

Accessories

GreenDrive

One-piece drive socket for DrillFast® stainless fasteners, supports the head for easy accurate driving.

Product Code: GREENDRIVE



RedDrive

One-piece drive socket for DrillFast® low profile fasteners, supports the head for easy accurate driving.

Product Code: REDDRIVE

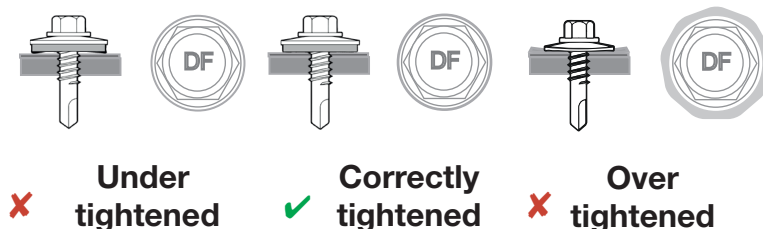


Many other tools and accessories are available.

Please see the current Fixfast Product Directory, go to www.fixfast.com, or ask the Fixfast customer service team.

Installation and handling

- **Installation tool**
Variable speed electric screwdriver
- **Installation drive**
Fixfast GreenDrive or Fixfast RedDrive depending on the fastener being used
- **Installation speed**
1500rpm
- **Correct Installation**
Fasteners should be driven within three degrees of perpendicular to the surface of the fastened material. Use a depth-setting nosepiece to avoid over-driving, and do not over-tighten. Variants with bonded washers should not have the rubber compressed to less than two-thirds of its uncompressed height. Care should be taken when engaging and disengaging from the fastener and to avoid damage to the protective coating.



- **Handling**
Fasteners may have sharp edges, and the use of power tools can be dangerous. Use personal protective equipment. Store fasteners in dry conditions. Inspect each fastener before use and do not use damaged fasteners. Replace any fasteners which appear to have been installed incorrectly.

Technical Data

| DF3-SS-6.0 Range | |
|-----------------------------------------|----------------------------------------------------------------------|
| Material | 1.4301 stainless steel (304M), with steel case hardened welded point |
| Coating | Organic |
| Drilling Capacity | 1.2mm - 3.0mm steel |
| Pull-out Values (axial load resistance) | |
| Substrate | Characteristic value |
| 1.5mm Steel | 2.19kN |
| 2.0mm Steel | 3.06kN |
| 3.0mm Steel | 6.37kN |

| DF2-SS-6.0 Range | |
|-----------------------------------------|----------------------------------------------------------------------|
| Material | 1.4301 stainless steel (304M), with steel case hardened welded point |
| Coating | Organic |
| Drilling Capacity | 0.5mm - 2.0mm steel |
| Pull-out Values (axial load resistance) | |
| Substrate | Characteristic value |
| 0.5mm Steel | 0.69kN |
| 1.2mm Steel | 2.67kN |
| 2.0mm Steel | 4.83kN |
| Softwood 35mm Embedment | <i>Please contact customer service for details</i> |

Technical Data

| DF3-SS-HT-5.5 Range | |
|-----------------------------------------|----------------------------------------------------------------------|
| Material | 1.4301 stainless steel (304M), with steel case hardened welded point |
| Coating | Organic |
| Drilling Capacity | 1.2mm - 3.0mm steel |
| Pull-out Values (axial load resistance) | |
| Substrate | Characteristic value |
| 1.2mm Steel | 1.30kN |
| 2.0mm Steel | 2.62kN |
| 3.0mm Steel | 4.76kN |
| Softwood 35mm Embedment | 3.57kN |

| DF2-SS-P-6.3 x 25 | |
|-----------------------------------------|----------------------------------------------------------------------|
| Material | 1.4301 stainless steel (304M), with steel case hardened welded point |
| Coating | Organic |
| Drilling Capacity | Max 2 sheets 1.0mm S275 steel |
| Pull-out Values (axial load resistance) | |
| Fastener | Characteristic value |
| DF2-SS-P-6.3 x 25 | 0.60kN |

Fastener Data

- + All dimensions are subject to manufacturing tolerances.
- + Performance values are tested and calculated according to Eurocode procedures and appropriate safety factors should be applied in any calculations using these values.

Fastener Selection

- + Recommended fastener lengths are calculated using standard tolerances for the fasteners and the combination of materials in the build-up.
- + If there is distortion in the supporting construction, or other non-standard application detail, longer fasteners may be necessary than those shown. Always check the actual circumstances before deciding on a particular length.

Further Assistance

- + For any enquiry, or to discuss your requirements with someone knowledgeable, call the Fixfast customer service team on **0800 304 7616**.
- + Full literature is available for the Fixfast range, or visit **www.fixfast.com**
- + Other performance data may be available on request. For more unusual applications, tests can be carried out in our in-house technical centre to provide the necessary data.
- + Site visits are also possible, particularly for pull-out performance into concrete, masonry or other variable substrates. Please ask for a Site Visit Request form if you think this service would be useful.
- + CAD files of fasteners are available on request for inclusion in drawings.

The information contained in this document is based on the specification of the Kingspan KingZip IP system and Fixfast's product data. It is provided in good faith but Fixfast cannot be held liable for any errors. Performance is dependent on adherence to the conditions and instructions contained in Fixfast's Technical Data Sheets for the products shown. Performance values should be approved by a qualified engineer, and Fixfast recommend preliminary tests for any application where variation is possible in the materials or substrates involved.