

# EXPONA<sup>®</sup>

## DESIGN

HEAVY COMMERCIAL LUXURY VINYL TILES





## EXPONA® DESIGN

Introducing a new concept in high-design flooring, each of Expona Design's heavy commercial floor coverings has been expertly curated using authentic reproductions of natural materials and harmonious colour tones, so they can be used in conjunction with one another to create movement within an interior.

By adding shade and surface texture variation within each floor tile, across a variety of elegant contemporary and decorative designs including innovative graphic design effects, this range will help shape the atmosphere of a room or commercial environment to give the user a feeling of recognition and comfort.

6182  
Light Elm  
152.4 x 914.4mm



## EXPONA DESIGN - Designed to mix.

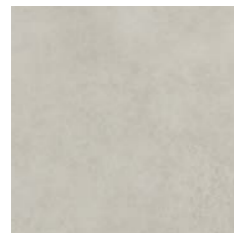
The Expona Design collection of luxury vinyl tiles blurs the lines between natural wood and stone finishes. By intentionally including a variety of patterns with the same harmonious colour scheme, different floor coverings can be combined to add a unique element to any commercial interior.

The exclusive designs featured in this collection provide the opportunity for creativity and encourage play and engagement, resulting in innovative floors that create unique spatial experiences. Let your imagination take hold with these striking designs and construct a floor perfectly suited to every area. With multiple patterns and embossed flooring designs, the collection offers a bespoke and premium look whilst remaining easy to install and maintain.

The recurring colour tones featured in this collection can be seen across various wood, stone and cement designs. This synergy between shades means each design can stand alone or be combined with others from the range to establish defined zones or guide users. This offers greater flexibility when creating an inspiring space.



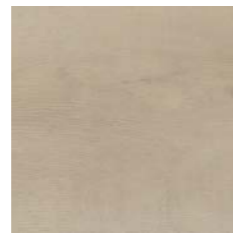
# COLLECTION OVERVIEW



p23  
Frosted Cement



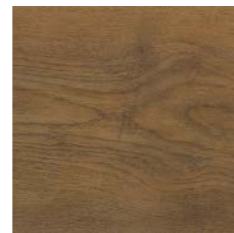
p26  
Wet Cement



p7,18  
Pacific Oak



p46  
Natural Brushed Oak



p14  
Mango Oak



p28,78  
Rusted Stencil Concrete



p25,26  
Grey Stencil Concrete



p28,78  
Subway Cement



p39,68  
Silverline Slate



p54  
Factory Cement



p43,44  
Pearl Stone



p7,18  
Coral Medley



p50  
Whiskey Barrel Timber



p13,14  
Sepia Medley



p41,68  
Parkside Oak



p16  
Smoked Medley



p50  
Cool Grey Concrete



p40,43  
Medina Stone



p57  
Silvered Driftwood



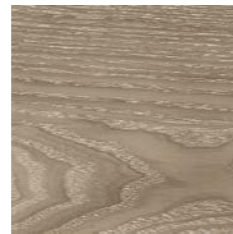
p36,39  
Charcoal Slate



p5,7,19,22  
Cream Geotexture



p35  
Promenade Oak



p4,32  
Light Elm



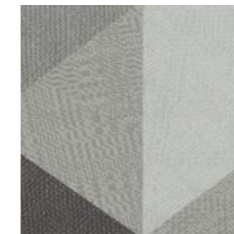
p49  
Reclaimed Inked Oak



p52  
Rustic Spiced Timber



p55  
Salvaged Pier Timber



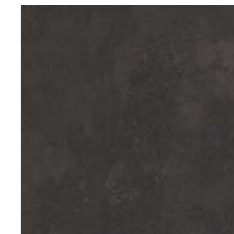
p21  
Monochrome Geotexture



p20,41  
Atlantic Slate



p31,32  
Black Treadplate

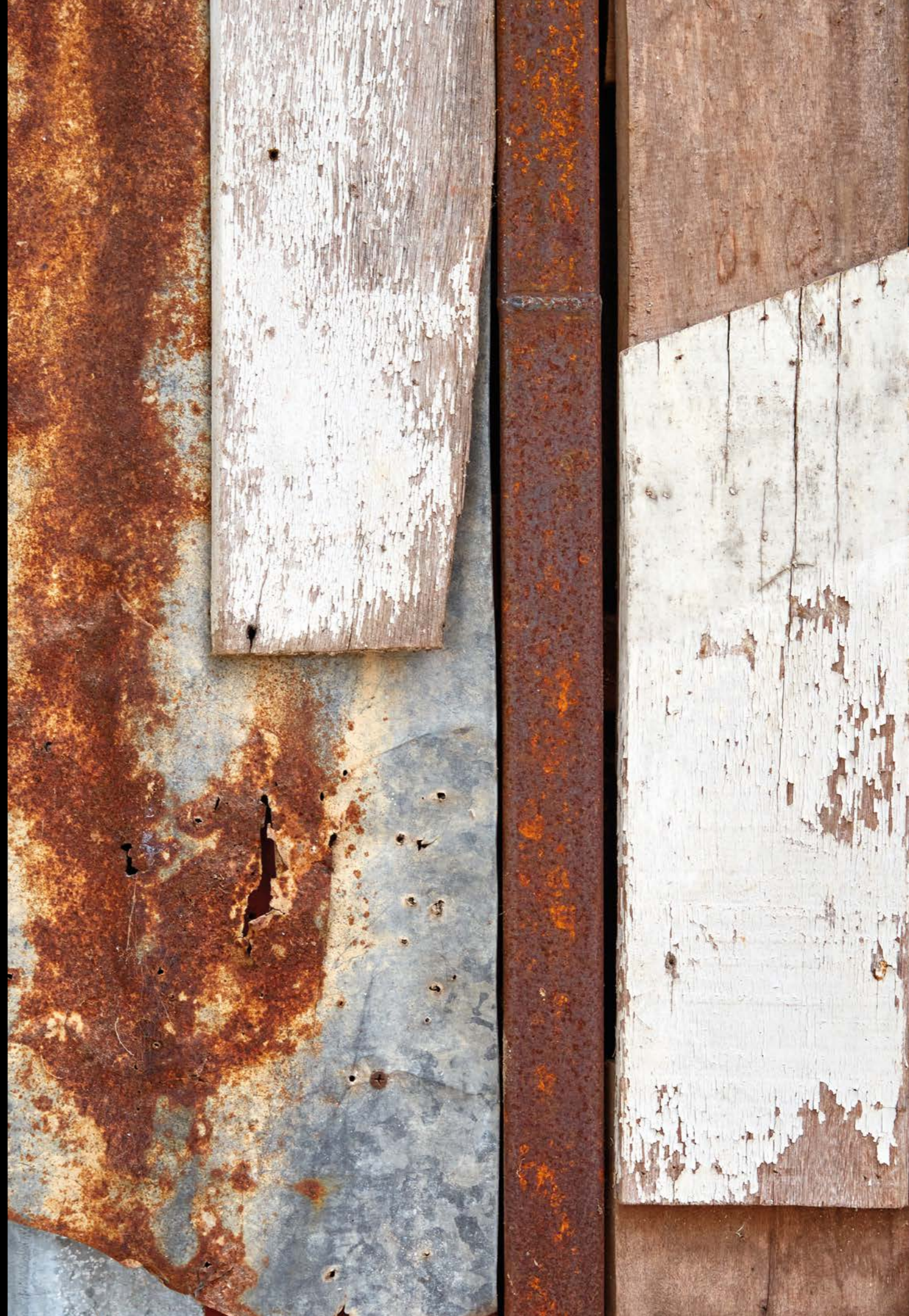


p43  
African Blue Stone

The Expona Design collection of 30 shades spans a plethora of wood species, natural stone and man-made materials, each featuring a complementary surface texture for an authentic appearance. Browse through the following pages, or navigate directly to the shade you want using the references above.

## BE INSPIRED

Developed to appeal to one's imagination, Expona Design introduces creative and graphic designs created using both illustrative and photographic techniques. The collection successfully parallels Expona's tradition of strong innovation and individuality, whilst retaining focus on practicality and interior longevity within commercial environments.



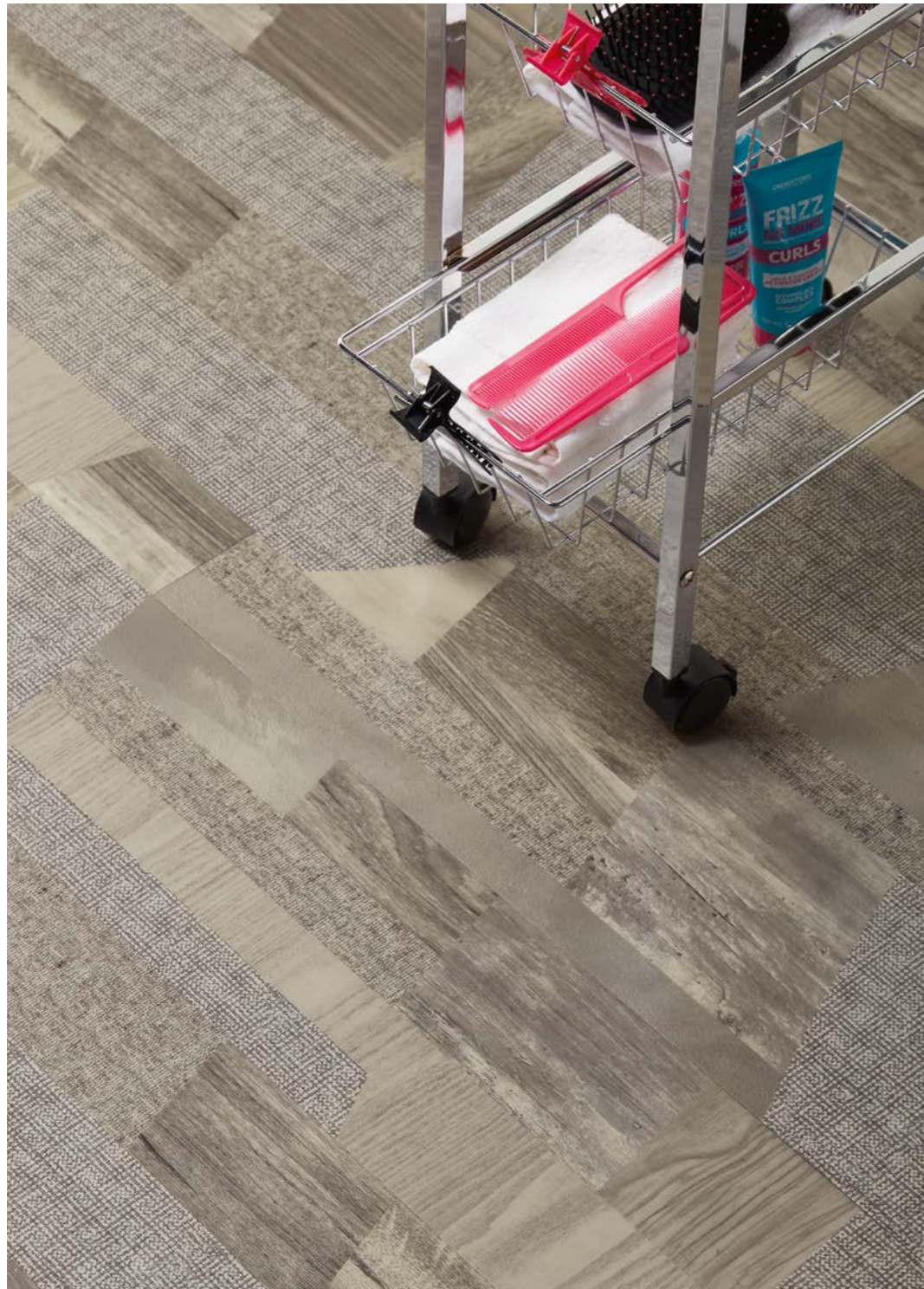


9127 Sepia Medley 184.2 x 1524mm Emboss: Patchwork structure









9125 Smoked Medley 184.2 x 1524mm Emboss: Patchwork structure







9148 Monochrome Geotexture 304.8 x 609.6mm Emboss: Textile structure





9147 Cream Geotexture 304.8 x 609.6mm Emboss: Textile structure





9139 Grey Stencil Concrete 609.6 x 609.6mm Emboss: Smooth stone structure

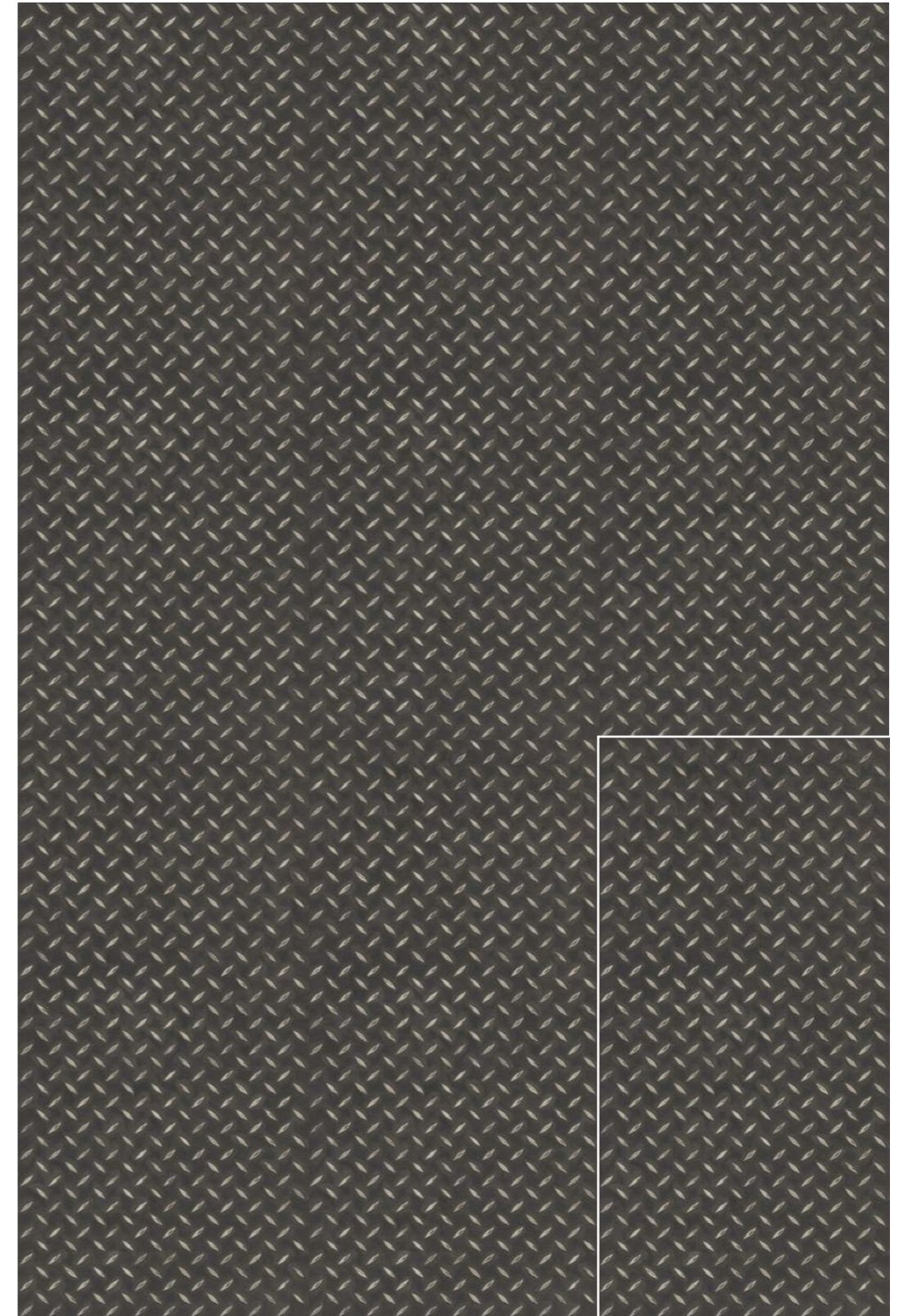




1. 9139 Grey Stencil Concrete 609.6 x 609.6mm Emboss: Smooth stone structure  
 2. 9135 Wet Cement 609.6 x 1219.2mm Emboss: Smooth stone structure

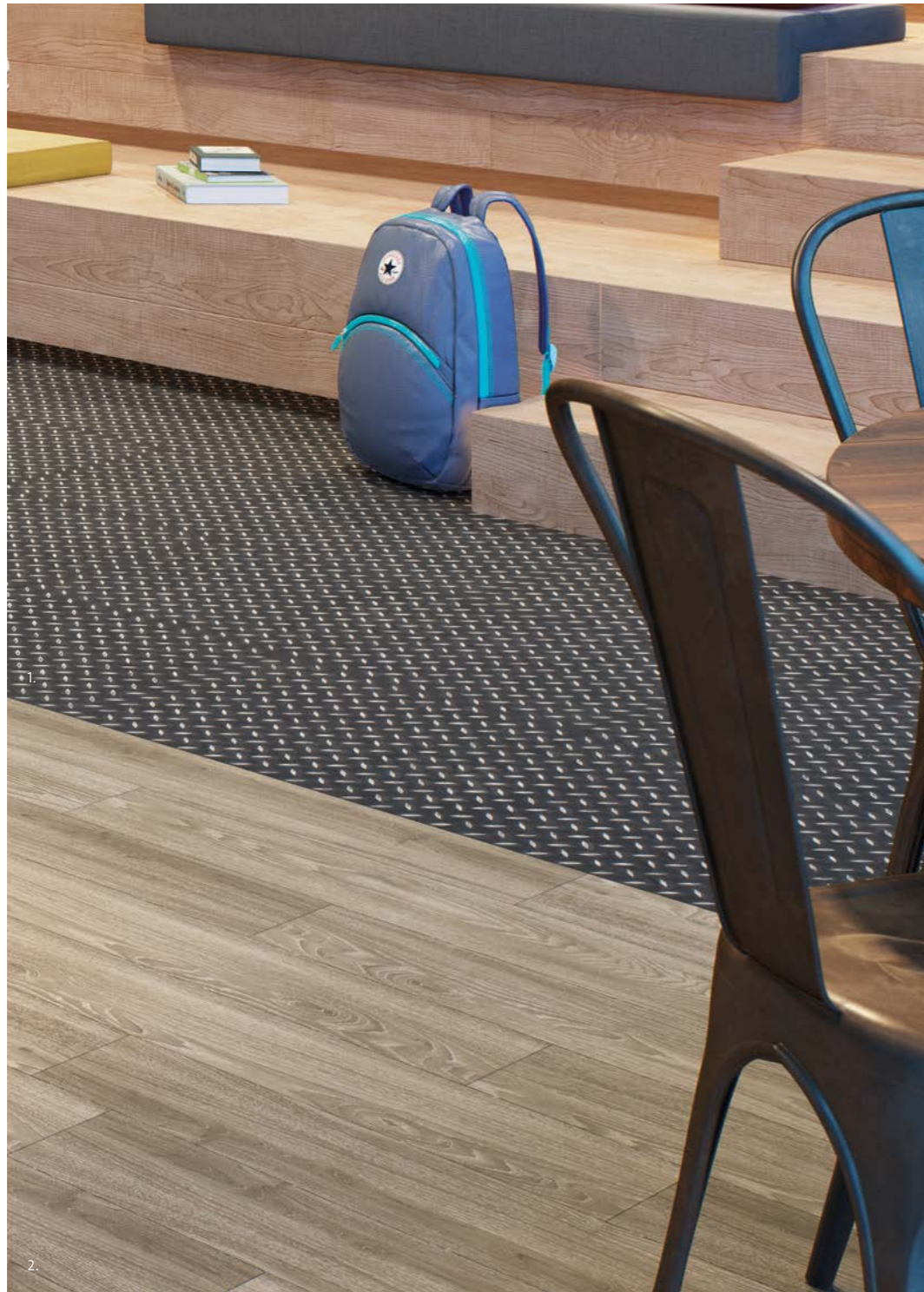






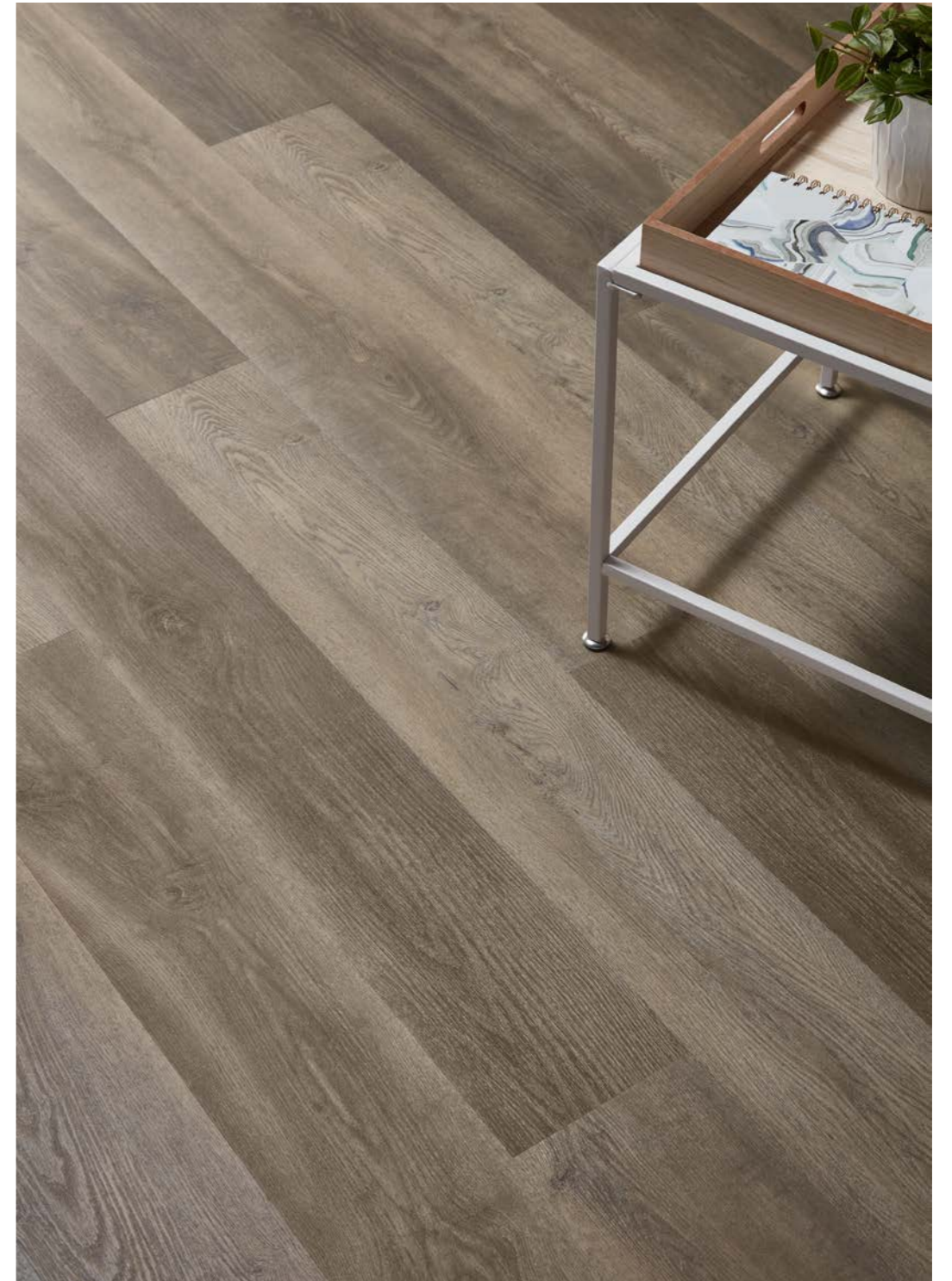
8122 Black Treadplate 457.2 x 914.4mm Emboss: Treadplate structure





1. 8122 Black Treadplate 457.2 x 914.4mm Emboss: Treadplate structure  
 2. 6182 Light Elm 152.4 x 914.4mm Emboss: Fine wood structure





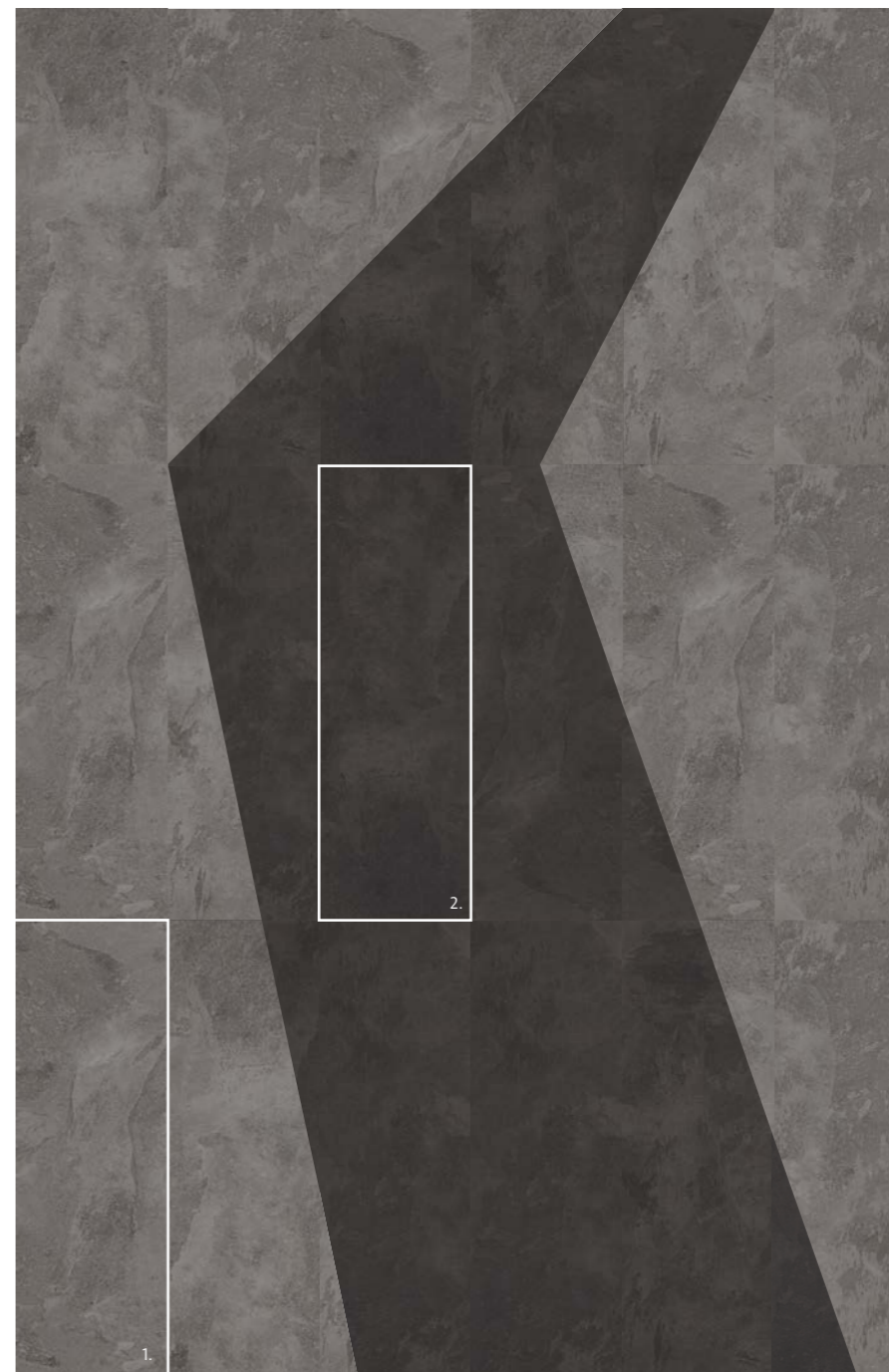
9038 Promenade Oak 184.2 x 1524mm Emboss: Oak wood structure





9146 Charcoal Slate 304.8 x 914.4mm Emboss: Smooth slate structure





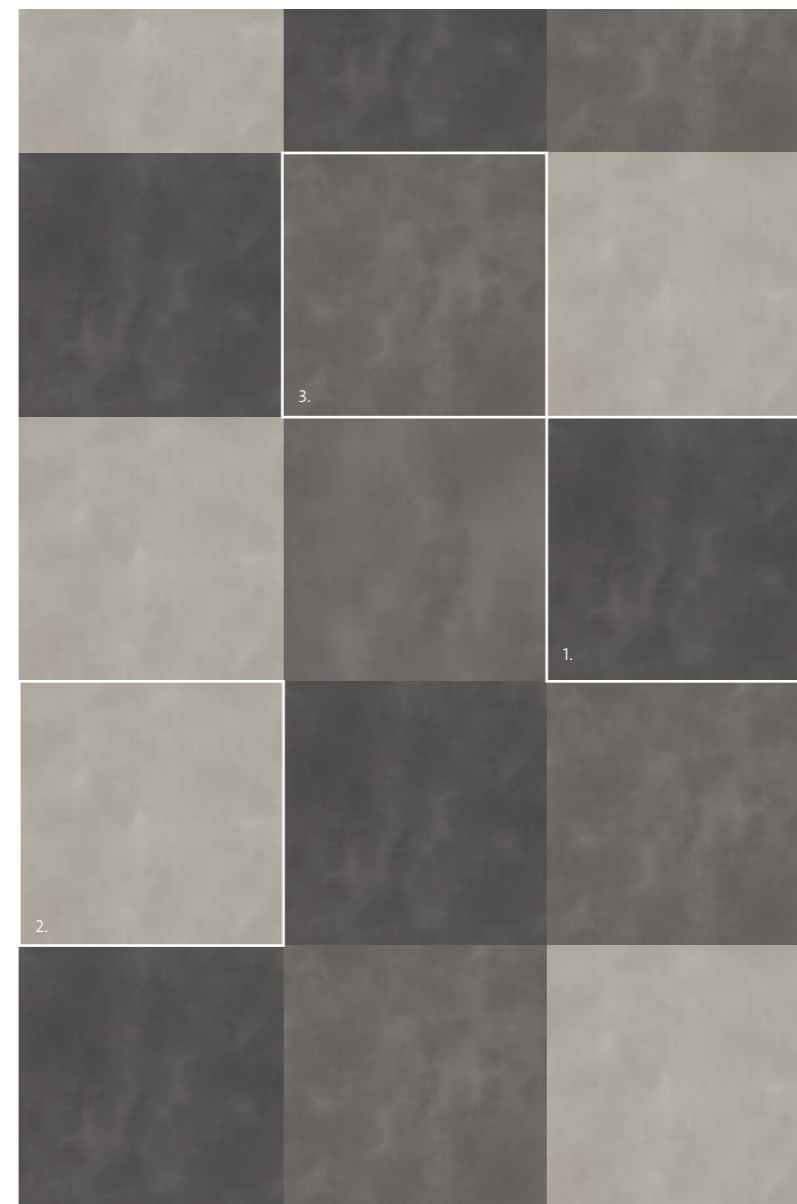
1. **9145 Silverline Slate** 304.8 x 914.4mm Emboss: Smooth slate structure
2. **9146 Charcoal Slate** 304.8 x 914.4mm Emboss: Smooth slate structure





1. 9039 Parkside Oak 184.2 x 1524mm Emboss: Oak wood structure  
2. 7154 Atlantic Slate 304.8 x 609.6mm Emboss: Slate structure





- 1. **9132 African Blue Stone** 914.4 x 914.4mm Emboss: Natural stone structure
- 2. **9128 Pearl Stone** 914.4 x 914.4mm Emboss: Natural stone structure
- 3. **9131 Medina Stone** 914.4 x 914.4mm Emboss: Natural stone structure



9128 Pearl Stone 914.4 x 914.4mm Emboss: Natural stone structure





6179 Natural Brushed Oak 203.2 x 1219.2mm Emboss: Wood structure







9051 Reclaimed Inked Oak 203.2 x 1524mm Emboss: Distressed wood structure





1. 9049 Whiskey Barrel Timber 203.2 x 1524mm Emboss: Distressed wood structure  
2. 7237 Cool Grey Concrete 609.6 x 609.6mm Emboss: Stone structure





9047 Rustic Spiced Timber 203.2 x 1524mm Emboss: Distressed wood structure





9048 Salvaged Pier Timber 203.2 x 1524mm Emboss: Distressed wood structure





6146 Silvered Driftwood 203.2 x 1219.2mm Emboss: Relief wood structure



## THE COLLECTION

The following spreads summarise the Expona Design collection, featuring accurate product scans and detailing all tile and plank sizes. Designs that feature pattern variations or bevelled edges are highlighted for easy identification, and the whole collection has been grouped by plank or tile size, so depending on the scale of the installation a suitable tile can be quickly selected.





**9048 Salvaged Pier Timber**  
See page 55  
Emboss: Distressed wood structure



**9047 Rustic Spiced Timber**  
See page 52  
Emboss: Distressed wood structure



**9049 Whiskey Barrel Timber**  
See page 50  
Emboss: Distressed wood structure



**9051 Reclaimed Inked Oak**  
See page 49  
Emboss: Distressed wood structure



Accurate authenticity is at the heart of Expona, representing the allure, distinction and unpredictability of natural timber and stone. To replicate these materials, the products may contain knots and variation in markings as part of their design.

Although we endeavour to ensure the brochure print process represents the true colour of each product, we recommend you view an actual sample which we shall be pleased to supply, free of charge. Visit [polyflor.com](http://polyflor.com) and follow the samples link for further details.



**9041 Pacific Oak**  
See page 7,18  
Emboss: Oak wood structure



**9039 Parkside Oak**  
See page 41,68  
Emboss: Oak wood structure



**9042 Mango Oak**  
See page 14  
Emboss: Oak wood structure



**9038 Promenade Oak**  
See page 35  
Emboss: Oak wood structure



Accurate authenticity is at the heart of Expona, representing the allure, distinction and unpredictability of natural timber and stone. To replicate these materials, the products may contain knots and variation in markings as part of their design.

Although we endeavour to ensure the brochure print process represents the true colour of each product, we recommend you view an actual sample which we shall be pleased to supply, free of charge. Visit [polyflor.com](http://polyflor.com) and follow the samples link for further details.





**9127 Sepia Medley**  
See page 13,14  
Emboss: Patchwork structure



**9126 Coral Medley**  
See page 7,18  
Emboss: Patchwork structure



**9125 Smoked Medley**  
See page 16  
Emboss: Patchwork structure



**6146 Silvered Driftwood**  
See page 57  
Emboss: Relief wood structure



**6179 Natural Brushed Oak**  
See page 46  
Emboss: Wood structure

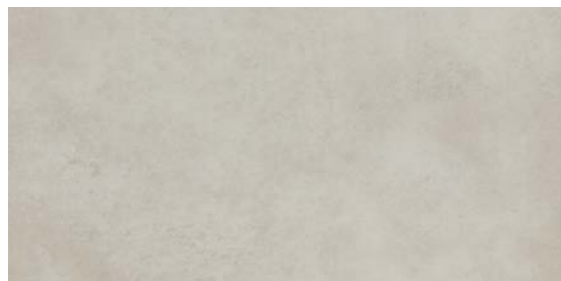


**6182 Light Elm**  
See page 4,32  
Emboss: Fine wood structure

Accurate authenticity is at the heart of Expona, representing the allure, distinction and unpredictability of natural timber and stone. To replicate these materials, the products may contain knots and variation in markings as part of their design.

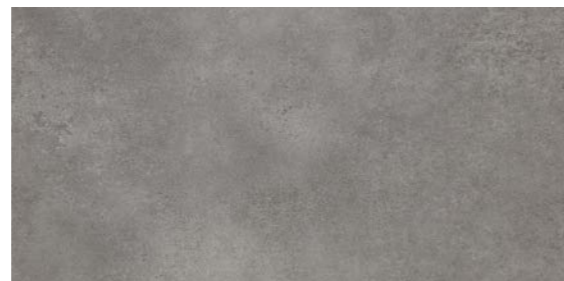
Although we endeavour to ensure the brochure print process represents the true colour of each product, we recommend you view an actual sample which we shall be pleased to supply, free of charge. Visit [polyflor.com](http://polyflor.com) and follow the samples link for further details.

24" x 48"  
609.6 x 1219.2mm



**9134 Frosted Cement**  
See page 23  
Emboss: Smooth stone structure

**9137 Factory Cement**  
See page 54  
Emboss: Smooth stone structure



**9135 Wet Cement**  
See page 26  
Emboss: Smooth stone structure

**9133 Subway Cement**  
See page 28,78  
Emboss: Smooth stone structure

12" x 24"  
304.8 x 609.6mm



**9148 Monochrome Geotexture**  
See page 21  
Emboss: Textile structure

**9147 Cream Geotexture**  
See page 5,7,19,22  
Emboss: Textile structure



**7154 Atlantic Slate**  
See page 20,41  
Emboss: Slate structure

Accurate authenticity is at the heart of Expona, representing the allure, distinction and unpredictability of natural timber and stone. To replicate these materials, the products may contain knots and variation in markings as part of their design.

Although we endeavour to ensure the brochure print process represents the true colour of each product, we recommend you view an actual sample which we shall be pleased to supply, free of charge. Visit polyflor.com and follow the samples link for further details.

24" x 24"  
609.6 x 609.6mm



**9139 Grey Stencil Concrete**  
See page 25,26  
Emboss: Smooth stone structure

**9141 Rusted Stencil Concrete**  
See page 28,78  
Emboss: Smooth stone structure



**7237 Cool Grey Concrete**  
See page 50  
Emboss: Stone structure

12" x 36"  
304.8 x 914.4mm

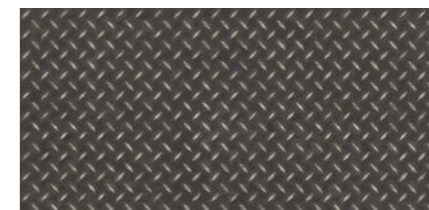


**9145 Silverline Slate**  
See page 39,68  
Emboss: Smooth slate structure



**9146 Charcoal Slate**  
See page 36,39  
Emboss: Smooth slate structure

18" x 36"  
457.2 x 914.4mm



**8122 Black Treadplate**  
See page 31,32  
Emboss: Treadplate structure

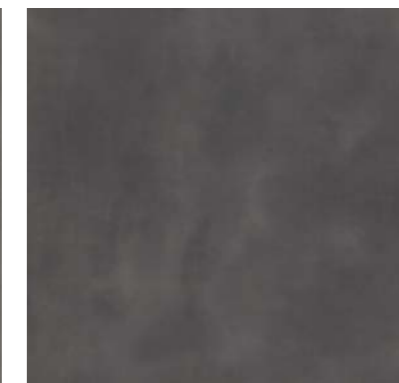
36" x 36"  
914.4 x 914.4mm



**9128 Pearl Stone**  
See page 43,44  
Emboss: Natural stone structure



**9131 Medina Stone**  
See page 40,43  
Emboss: Natural stone structure



**9132 African Blue Stone**  
See page 43  
Emboss: Natural stone structure



# INLAY STRIPS

Developed to create authenticity across floor designs, inlay strips can be positioned between planks or tiles to bring an installation to life. They can also create zones and highlight features, or add a bold graphic look to an interior space.

## Grouting Strips

5 x 914mm



2537 (2.5mm) / 3037 (3.0mm) Beige



2536 (2.5mm) / 3036 (3.0mm) Grey



2538 (2.5mm) / 3038 (3.0mm) Black

## Marquetry Strips

5 x 914mm



2551 (2.5mm) / 3061 (3.0mm) Light Oak



2552 (2.5mm) / 3062 (3.0mm) Mid Oak



2553 (2.5mm) / 3063 (3.0mm) Walnut

## Feature Strips

5 x 1000mm



5100 (2.5mm) / 0115 (3.0mm) Silver



5103 (2.5mm) / 0103 (3.0mm) Black



5110 (2.5mm) / 0114 (3.0mm) Brown

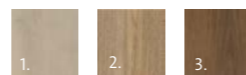
For bevelled planks and tiles, we recommend using 2.5mm gauge inlay strips.

# SPECIALTY DESIGN FLOORS

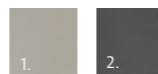
From the first stages of developing your interior space, we can help you realise your vision with a bespoke design floor installation. We have worked closely with many architects and designers over the years to realise eye-catching floor coverings for hundreds of buildings, across all commercial sectors. From conception to completion, we can provide visuals, advise on colour combinations and product selection to mirror the attitude and lifestyle of an overall scheme. There's virtually no limit to the shapes, patterns or imagery you can create with the help of Polyflor's design service, realised through the precision and flexibility of waterjet cutting technology to meet your unique requirements.



- 1. 9041 Pacific Oak
- 2. 6179 Natural Brushed Oak
- 3. 9039 Parkside Oak



- 1. 9128 Pearl Stone
- 2. 9132 African Blue Stone



- 1. 9135 Wet Cement
- 2. 9133 Subway Cement



# EMBOSESSES

Expona Design offers exceptional quality and a range of leading wood and stone designs as a result of extensive research and innovative product development. The combination of high-clarity design film and faithful surface textures make Expona the supreme flooring choice. The surface embossing developed for the Expona Design collection has been designed to precisely replicate the appearance and feel of real wood timbers, natural stone structures and abstract floor patterns, and then paired with each corresponding design for a premium finish.



Coral Medley

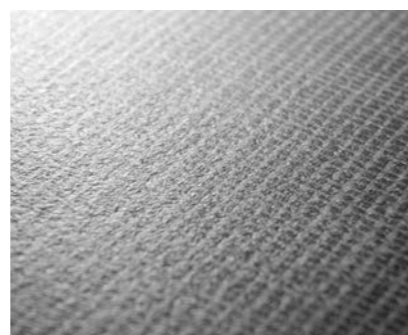


Patchwork structure

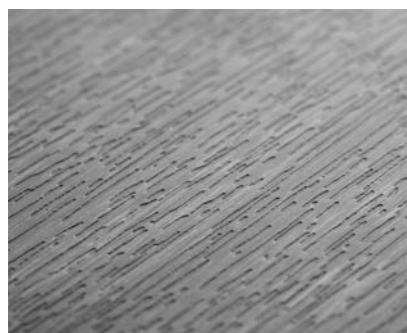


Distressed wood structure 073

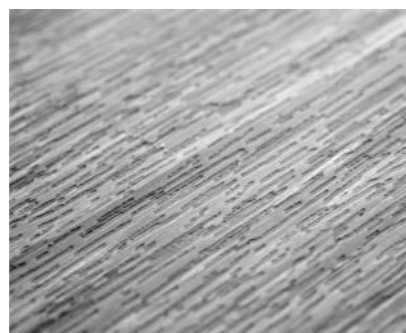
# EMBOSESSES



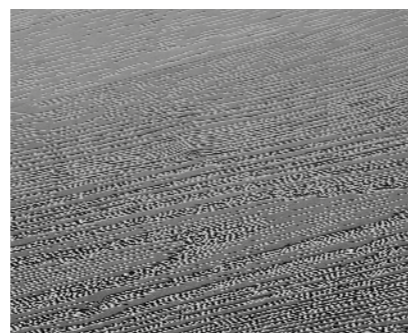
Textile structure



Wood structure



Fine wood structure



Oak wood structure



Relief wood structure



Stone structure



Natural stone structure



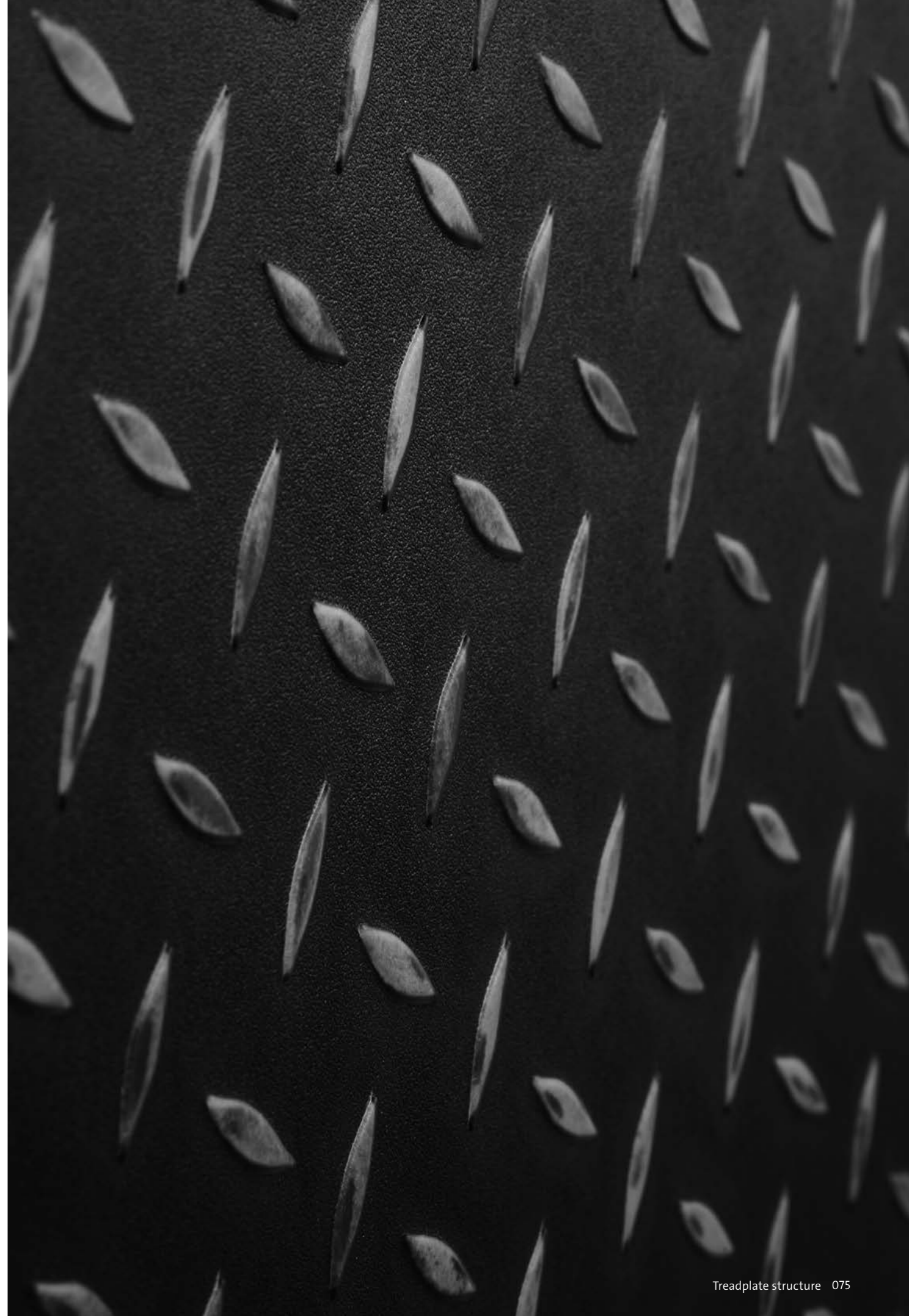
Smooth stone structure



Slate structure

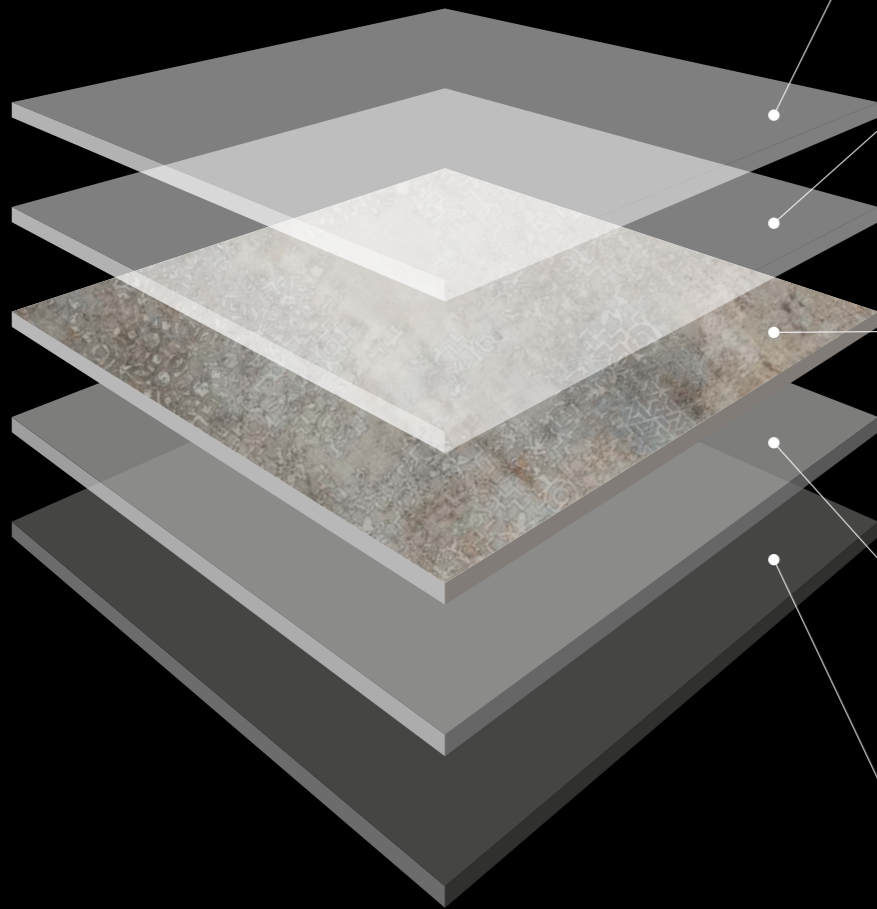


Smooth slate structure



# STRUCTURE

Expona tiles and planks consist of individual layers which are thermally pressed and feature a polyurethane reinforcement (PUR). Expona combines a vast range of authentic wood and stone designs alongside creative, innovative and abstract effects with the excellent easy-care characteristics of PVC flooring.



## Polyurethane Reinforcement

The PUR treatment supports a simple cleaning regime.

## Wear layer

The embossed, 0.7mm, high-density and transparent layer is hard wearing and protects the design.

## Decoration layer

An innovative printing technique makes the high-clarity design film a true representation of natural materials.

## Stabilisation layer

Improved dimensional stability is achieved by minimising the effect of surrounding physical properties e.g. temperature fluctuations.

## Load-bearing layer

The basis for the long service life and high performance of Expona.

# TECHNICAL DATA

Characteristics	Standards	Unit	EXPONA DESIGN
Finish			PUR
Total weight	ISO 23997 (EN 430)	g/m <sup>2</sup>	5,100
Use area	ISO 10874 (EN 685)		23 / 34 / 43
Gauge	ISO 24346 (EN 428)	mm	3.0
Wear layer	ISO 24340 (EN 429)	mm	0.70
Packaging and plank sizes	ISO 24342 (EN 427)	mm	24 @ 152.4 x 914.4 = 3.34m <sup>2</sup>
			14 @ 203.2 x 1219.2 = 3.46m <sup>2</sup>
			12 @ 184.2 x 1524 = 3.37m <sup>2</sup>
			11 @ 203.2 x 1524 = 3.41m <sup>2</sup>
Packaging and tile sizes	ISO 24342 (EN 427)	mm	9 @ 609.6 x 609.6 = 3.34m <sup>2</sup>
			18 @ 304.8 x 609.6 = 3.34m <sup>2</sup>
			12 @ 304.8 x 914.4 = 3.34m <sup>2</sup>
			8 @ 457.2 x 914.4 = 3.34m <sup>2</sup>
			6 @ 914.4 x 914.4 = 5.01m <sup>2</sup>
	6 @ 609.6 x 1219.2 = 4.46m <sup>2</sup>		
Dimensional stability	ISO 23999 (EN 434) ASTM F2199	%	≤0.10 max Pass
Residual indentation	ISO 24343-1 (EN 433)	mm	<0.05**
	ASTM F970	in	<0.005 @ 750psi
	ASTM F1914	in	<0.005
Light fastness	ISO 105-B02 (Method 3)	level	≥ 6
Reaction to fire	EN 13501-1		Class Bfl-S1
	ASTM E662		<450 Pass
	ASTM E648		Class 1
	CAN/ULC S102.2		FSV < 300; SDV < 500
Slip resistance	EN 13893		Class DS
	DIN 51130 / DIN EN 16165 Ann. B		R10
	AS 4586		R10
Static electrical propensity	EN 1815	kV	≤2.0 Classified as 'antistatic'
Resistance to chemicals	ISO 26987 (EN 423)		Good*
	ASTM F925		Good
Abrasion resistance	EN 649		Group T
Castor Chair (continuous use)	ISO 4918 (EN 425)		Suitable
Underfloor heating			Suitable, max 27°C
VOC emissions	Indoor Air Comfort Gold		Eurofins certified product
	FloorScore		Certified
	AgBB/ABG		Pass
Responsible sourcing	BES 6001		Very Good
	SA 8000		Approved Factory

\* Resistant depending on concentration and time of exposure, in case of increased impact of oils, grease, acids, alkalis and other aggressive chemicals please contact us. Averaged test value from current production

\*\* Average test value from current production.



# HERE TO HELP

## SUSTAINABILITY

As a leading global manufacturer of high quality, high performance floor coverings, Polyflor has demonstrated a high level of commitment to minimising the impact our products have on the environment, and endeavour to meet these requirements with a focus on sustainability and a healthy indoor climate. In doing so, Polyflor is the first flooring manufacturer to achieve BES 6001 certification for Responsible Sourcing.

Polyflor, a company of James Halstead PLC, supports sustainable construction and has prepared a product specific Environmental Product Declaration (EPD) for Expona Design, in accordance to EN 15804 and verified by the Institute for Construction and Environment (Institut Bauen und Umwelt e.V. (IBU)) for the environmental assessment of buildings. Expona Design has also been assessed and certified for BRE Global and Global GreenTag Life Cycle Analysis ecolabel programmes.

Expona Design has the prescribed CE mark, as a European declaration of performance and is regularly tested to ensure the exceptional standards are continually met by external third parties including Eurofins, one of Europe's leading service providers in the field of analysis. Through these annual external inspections, Eurofins have awarded Expona Design the Indoor Air Comfort Gold rating. This certificate is awarded to products with VOC emissions below any globally determined VOC limits. Expona Design is also certified with FloorScore, and Afsset.

All Expona flooring is 100% recyclable and contains an average 40% recycled material. For the reasons listed, the range contributes positively in obtaining credits on BREEAM, LEED, SKA and Green Star assessed projects.

## ORDER SAMPLES

Polyflor provide a complimentary product sample service so you can sample your choice of flooring before you make your final selection, and ensure you find the exact floor covering you are looking for. To order your free sample of any Expona Design colour, visit the Polyflor website, call the dedicated Polyflor Samples Hotline on +44 (0) 161 767 2551 or speak with your local Polyflor provider.

## VISIT US ONLINE

Visit [polyflor.com](http://polyflor.com) for detailed product and technical information on all flooring collections within the Polyflor portfolio. Our award winning website provides an easy to follow navigation system to help you find exactly what you are looking for, free downloads, and free product and literature samples which can be easily ordered through the website.

## CONTACT US

For general information on your specific project, either speak with your local Polyflor provider or contact us directly. If you require additional detailed technical data, either visit [polyflor.com](http://polyflor.com) and follow the links to the technical pages, contact Polyflor Customer Technical Services on +44 (0) 161 767 1912 or email [tech@polyflor.com](mailto:tech@polyflor.com).



100% RECYCLABLE  
40% RECYCLED MATERIAL





# PRODUCT INDEX

Shade	Page Number
African Blue Stone	p43
Atlantic Slate	p20,41
Black Treadplate	p31,32
Charcoal Slate	p36,39
Cool Grey Concrete	p50
Coral Medley	p7,18
Cream Geotexture	p5,7,19,22
Factory Cement	p54
Frosted Cement	p23
Grey Stencil Concrete	p25,26
Light Elm	p4,32
Mango Oak	p14
Medina Stone	p40,43
Monochrome Geotexture	p21
Natural Brushed Oak	p46
Pacific Oak	p7,18
Parkside Oak	p41,68
Pearl Stone	p43,44
Promenade Oak	p35
Reclaimed Inked Oak	p49
Rusted Stencil Concrete	p28,78
Rustic Spiced Timber	p52
Salvaged Pier Timber	p55
Sepia Medley	p13,14
Silvered Driftwood	p57
Silverline Slate	p39,68
Smoked Medley	p16
Subway Cement	p28,78
Wet Cement	p26
Whiskey Barrel Timber	p50

## POLYFLOR™ INTERNATIONAL

**Australia**  
Polyflor Australia  
Tel: 1800 777 425  
E-mail: sales@polyflor.com.au

**Middle East**  
Polyflor FZE  
Tel: +971 50 406 8114  
E-mail: aelwakil@polyflorfze.ae

**Canada**  
Polyflor Canada Inc.  
Tel: +1 905 364 3000  
E-mail: sales@polyflor.ca

**New Zealand**  
Polyflor New Zealand Ltd.  
Tel: 0800 765 935  
Tel: +64 9 269 1111  
E-mail: sales@polyflor.co.nz

**China**  
Polyflor Hong Kong O/B Polyflor Ltd.  
Tel: +(852) 2865 0101  
E-mail: info@polyflor.com.hk

**Norway**  
Polyflor Nordic  
Tel: +47 23 00 84 00  
E-mail: firmapost@polyflor.no

**Colombia**  
Polyflor Ltd. (LATAM Office)  
Tel: +57 (601) 7431965  
E-mail: info@polyflor.com

**Poland**  
Polflor Sp. Z.o.o  
Tel: +48 (0) 61 820 3155  
E-mail: polyflor@polflor.com.pl

**France**  
James Halstead France SAS  
Tel: +33 (0)8 20 20 32 11  
E-mail: info@jhfrance.fr

**South Africa**  
Poly Sales Africa (Pty.) Ltd.  
Tel: +27 (0) 11 609 3500  
E-mail: info@polyflor.co.za

**Germany**  
objectflor Art und Design Belags GmbH  
Tel: +49 (0) 2236 966 330  
E-mail: info@objectflor.de

**Spain**  
Polyflor Ltd.  
Tel: +34 619 949 054  
E-mail: info@polyflor.com

**India**  
Polyflor India Pvt Ltd.  
Tel: +91 22 4023 2485  
E-mail: info@polyflor.co.in

**Sweden**  
FalckDesign AB  
Tel: +46 (0) 300 15820  
E-mail: info@falckdesign.com

**Ireland**  
Polyflor Ireland  
Tel: +353 (1) 864 9304  
E-mail: salesireland@polyflor.com

**Malaysia**  
Polyflor Martex  
Tel: 1300 80 7788  
E-mail: sales@polyflor.com.my

## POLYFLOR™ UK

Polyflor Ltd. PO Box 3, Radcliffe New Road,  
Whitefield, Manchester, M45 7NR

Tel: +44 (0) 161 767 1111  
E-mail: info@polyflor.com

[www.polyflor.com](http://www.polyflor.com)

*James Halstead*  
FLOORING



For details on distribution,  
as well as up to date product and  
technical information, please visit

[www.polyflor.com](http://www.polyflor.com)