

EXPONA®



5Gi  
Licensed by  
Valinge



**EnCORE**  
RIGID LOC  
ACOUSTIC LUXURY VINYL FLOORING

# EXPONA®

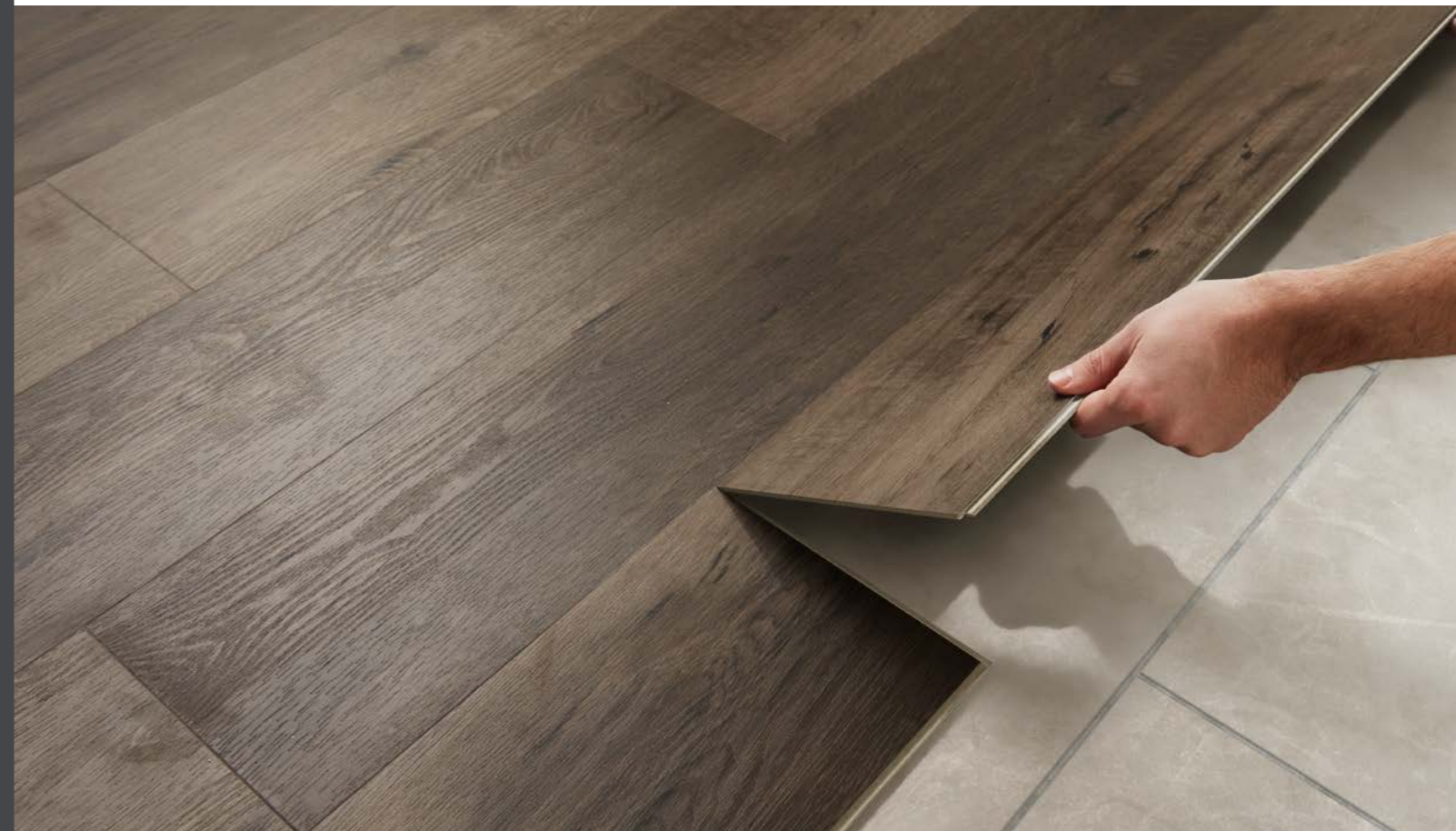
IN THE HOME

Expertly engineered, the Expona EnCore Rigid Loc Luxury Vinyl Flooring Collection combines superior performance with high quality timber designs. With a premium rigid construction, built in acoustic properties and 5G-i locking technology, EnCore is the ideal floor covering to transform home interiors with minimum disruption.

Designed to withstand the demands of modern life, every plank in the collection has a protective polyurethane reinforcement (PUR) surface treatment. EnCore is exceptionally durable, easy to maintain and waterproof making it the perfect alternative to traditional hardwood and laminate flooring in busy homes.

## LESS TIME FITTING MORE TIME ENJOYING

EnCore can be installed quickly and easily over most existing hard floors without the need for adhesive or a separate underlay.



19dB  
Acoustic



PUR  
Easy Clean



5G-i Loc  
Technology



Faster  
Installation



Underfoot  
Comfort

Front cover: 9034 Parisian Limed Oak

Back cover: 9036 Treehouse Oak

# EnCORE

## RIGID LOC

ACOUSTIC LUXURY VINYL FLOORING

### QUICK AND SIMPLE TO INSTALL

EnCore has a highly durable rigid construction, which provides exceptional stability, making it ideal for laying over existing floor coverings. With EnCore you can transform any room in your home quickly, saving time on subfloor preparation and installation.

Every plank in the EnCore collection also features a 5G-i locking mechanism, this function makes installation swift and easy. Loose lay format means no adhesive is required, ensuring minimal disruption whilst your floor is being installed.





9033 MOORLAND OAK

196.4 x 1212.4mm





9025 ICELANDIC OAK

177.35 x 1212.4mm





9035 HARBOUR SIDE OAK

196.4 x 1212.4mm



FOR LIFE'S  
LITTLE MISHAPS

EnCore is highly durable with built in protection from scratching, stains and daily wear.



**9034 PARISIAN LIMED OAK**

196.4 x 1212.4mm





# WARM AND COMFY UNDERFOOT

EnCore is comfortable underfoot, whilst also being compatible with underfloor heating - up to 27°C.



## 9036 TREEHOUSE OAK

196.4 x 1212.4mm







9037 SHINGLE OAK

196.4 x 1212.4mm





PEACE & QUIET  
WHEN YOU NEED  
IT MOST

EnCore has a built in acoustic backing  
which reduces impact sound by 19dB.



**9026 SUMMERHOUSE OAK**

177.35 x 1212.4mm





9028 RICE WINE OAK

177.35 x 1212.4mm





9027 EDEN ASH

177.35 x 1212.4mm



IDEAL FOR  
BUSY HOMES

EnCore is easy to clean and engineered to handle the demands of a modern household, perfect for pets and families.



**9029 LOG CABIN OAK**

177.35 x 1212.4mm





# ACCIDENTAL SPLASHES NOT A PROBLEM!

EnCore is 100% waterproof; the ideal alternative to natural wood and laminate floors.



## 9031 RICH HAZEL OAK

177.35 x 1212.4mm





**9032 TENNESSEE OAK**

177.35 x 1212.4mm



# CREATE YOUR DREAM

# SPACE



## 1

### BE INSPIRED

The first stage of designing an interior is refining your ideas and planning your finished look.

You can view even more EnCore imagery on our website [polyflorathome.com](https://polyflorathome.com). Our Polyflor at Home interiors blog is also bursting with advice to help you along the way!



## 2

### SELECT YOUR FLOOR

Browse our websites, brochures and shadecards at your leisure and make a shortlist of your favourite designs. The EnCore collection summary is available on page 32.



## 3

### ORDER FREE SAMPLES

Free samples of all the EnCore shades are available to order through our websites [polyflorathome.com](https://polyflorathome.com) and [polyflor.com](https://polyflor.com) or you can call the dedicated Polyflor Samples Hotline on +44 (0)161 767 2551

## 4

### DISCUSS YOUR PROJECT

It is always useful to be prepared when visiting your local flooring retailer. Start by providing a rough guide of the room shape and measurements. Be sure to bring your shortlist of chosen EnCore designs, including shade name and number.



## 5

### ENJOY YOUR NEW FLOOR

We want you to enjoy your floor for years to come, so we have prepared a list of top tips to help you keep your floor looking as good as new, see page 39 for more details.





# THE COLLECTION

Hand selected to complement a wide range of interiors, the stunning designs below have been grouped by plank size to make your selection as easy as possible.

**7.73" x 47.73"**  
196.4 x 1212.4mm



9033 Moorland Oak



9034 Parisian Limed Oak



9035 Harbour Side Oak



9036 Treehouse Oak



9037 Shingle Oak



**6.98" x 47.73"**  
177.35 x 1212.4mm



9025 Icelandic Oak



9026 Summerhouse Oak



9028 Rice Wine Oak



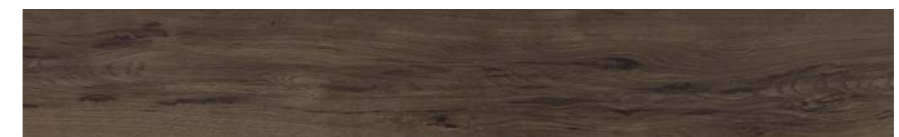
9027 Eden Ash



9029 Log Cabin Oak



9031 Rich Hazel Oak



9032 Tennessee Oak



For colour selection, an original sample should be used which we shall be pleased to supply free of charge. To replicate the natural material, the wood effect products may contain knots or markings as part of their design.

All designs feature a micro bevel.

These designs intentionally features a strong pattern and/or colour variation to accurately replicate natural timber.

# INSTALLATION OF YOUR FLOOR

Expona EnCore Rigid Loc combines all the best elements of luxury vinyl planks with a rigid core construction to offer a stable, durable, 100% waterproof floor covering with impressive acoustic performance.



## LIMITED SUBFLOOR PREPERATION

Due to its rigid construction, Expona EnCore Rigid Loc lays beautifully over most even subfloors, this means less subfloor preparation, less disruption in your home and even more time enjoying your new floor.



## ONLINE SUPPORT

On page 36 we have provided our recommended guidelines for the installation of Expona EnCore Rigid Loc. We also have a hub of further technical information available on our website [polyflor.com/technical](https://polyflor.com/technical).

To see just how quick and easy it is to lay EnCore you can also view our video on Polyflor TV .



...TO THIS

To ensure the best finished appearance it is essential to comply with the following installation instructions.

## PRIOR TO INSTALLATION

When installing Expona EnCore Rigid Loc Flooring panels always follow current national standards for the installation of floor coverings. Best current installation practice incorporating the latest technical developments should also be employed. The preparation of the subfloor, the installation of the floor covering and the measures taken to safeguard value are key factors in ensuring optimum suitability and performance of resilient floor coverings. On receipt of materials, check that the colours correspond to those ordered and that there is no damage or visual defects in the material. Check that the material is from one batch if that was requested. Claims for visual defects can only be accepted prior to installation and cutting.

## PREPARATION OF SUBFLOORS

Subfloors should be prepared as described in BS 8203 / DIN 18365 or prevailing local / national standards. Expona EnCore Rigid Loc Flooring can be installed over most hard subfloors, provided they are prepared in accordance with local standards. Subfloors must be hard, clean, and free from contamination, dry, durable, flat and sound. Solid subfloors must be tested in accordance to local standards to ensure they are not damp. Carpets and soft floorings are unsuitable as a base for the installation of Expona EnCore Rigid Loc Flooring, and will need to be removed prior to installation. Remove all debris and vacuum the whole subfloor area prior to commencing the installation.

Where underfloor heating is used the maximum temperature on the surface of the flooring must never exceed 27°C. Subfloors should be tested for moisture in accordance with local standards. Solid subfloors should demonstrate a maximum damp content of 75%RH before the installation can begin.

Residual moisture content:

Cement	without	UFH - 2.0% CM
	with	UFH - 1.8% CM
Anhydrite	without	UFH - 0.5% CM
	with	UFH - 0.3% CM

Remove any unevenness in the subfloor prior to installation. Subfloor levels should be in accordance with local national standards and in any event, should never exceed a maximum deviation of 5mm when measured under a 3m long straight edge. High spots and ridges should be removed to prevent damaging the panel's locking mechanism.

## CONDITIONING

Expona EnCore Rigid Loc Flooring must be protected against dirt and moisture during storage and both before and during the installation. The climatic conditions acceptable for the installation of Expona EnCore Rigid Loc Flooring are:

- Floor temperature > 15°C
- Room temperature > 18°C
- Air relative humidity < 50–60%

Prior to installation, open the boxes and place them in the room they are to be installed in for a minimum of 48 hours BEFORE the installation commences, so the material can acclimatise. Boxes should never be stacked greater than 3 high. Ensure that the room temperatures are between 18 and 27°C during the conditioning period. Shuffle the panels to ensure a random appearance before installation.

## INSTALLATION

As Expona EnCore Rigid Loc Flooring is a floating floor, a minimum expansion gap of 5mm should be left around the entire installation perimeter and anything protruding from the subfloor such as radiator pipes, fixed down items etc. For larger installations over 5m x 5m an

expansion gap of 1mm per linear meter of room length should be used. For example, a room 8m x 4m would require an expansion gap of 8mm around the entire perimeter of the room and around anything protruding from the floor. The length is determined by the direction in which the longest side of the panel is to be fitted. In areas under 5m x 5m use small offcuts as spacers between the panels and the walls to help achieve the correct expansion gap size. Skirting boards should be removed and door frames / architraves undercut to allow for possible expansion. A suitable quadrant or scotia trim can be used to cover the expansion gap.

Expona EnCore Rigid Loc Flooring is a loose lay product. In areas subject to large temperature fluctuations such as heavily glazed areas and areas subject to direct sunlight, special care must be taken including a larger expansion gap of a minimum 10mm and adequate UV protection.

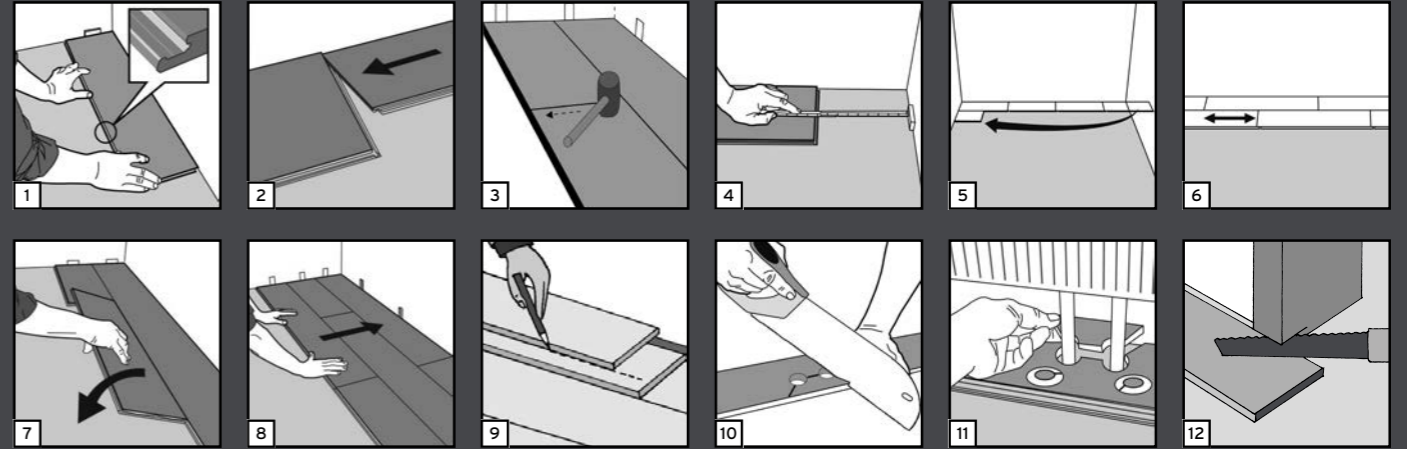
If installing in multiple rooms, finish the Expona EnCore Rigid Loc Flooring panels in the doorway on either side of the door to make separate floors. Allow a larger expansion gap between two such floors of double that left around the perimeter. Use two small offcut pieces of Expona EnCore Rigid Loc Flooring placed back to back to gauge the correct expansion gap size at door thresholds. A suitable threshold strip can then be installed to cover the resultant gap. Expona EnCore Rigid Loc Flooring should never be installed across multiple rooms as one floor. Panels should always be laid with staggered joints, at a distance of at least 150mm. When adjoining other floor coverings, finish the Expona EnCore Rigid Loc Flooring in the doorway. An appropriate expansion gap should be left between the Expona EnCore Rigid Loc Flooring and the adjoining floor covering. This can be covered using a suitable threshold or diminishing strip (see diagram below). Areas over 10m x 10m will require specialist advice. Please contact Polyflor's Customer Technical Support Dept on +44 (0)161 767 1912.

YOU WILL NEED

- Pencil
- Utility knife
- Retractable measuring tape or folding ruler
- Handsaw / Hacksaw
- Carpenter's 90° square
- Rubber mallet
- Pull bar

The use of safety glasses and protective gloves should also be considered.

Expona EnCore Rigid Loc Flooring planks are 100% waterproof. Therefore they will not absorb water and the structural integrity of the product will not be affected by water e.g. no swelling. In the case of standing water or flooding, Expona EnCore Rigid Loc Flooring will not act as a barrier between standing water/flooding and the subfloor, and as such is not recommended for continually wet areas such as walk in shower rooms.



### 1. First Panel first row:

The panels are laid without glue. Start to lay the floor in the left-hand corner of the room with the lower male profile facing towards you (Fig 1). A minimum expansion gap of 5mm should be left around the installation perimeter and anything protruding from the subfloor. For larger installations an expansion gap of 1mm per linear meter of room length should be used. For example a room 8m x 4m would require an expansion gap of 8mm around the entire perimeter of the room and around anything protruding from the floor. Use small offcuts from the panels as spacers between the panels and the walls to help achieve the correct size gap. Place spacers between the short and long edges of the panel and the walls.

### 2. Second Panel first row:

Place the short end of the second panel close to the corresponding short end of the previous panel. Carefully fold it down with a single action movement (Fig 2). Press firmly down on the short end of the next panel into the corresponding short edge of the first one, these should now lock securely together. Using the rubber mallet gently tap down the short joints along the short end just installed. It is important to ensure early in the installation that the short joints are fully engaged and locked into one another. Provided the panels align and fit flush with each other on the short joints after any hand / mallet pressure has been released, then the joints will be fully engaged. If they do not reapply pressure until this is achieved. Complete the first row in the same way (Fig 3). Continue in this way to as far as full panels can be installed to the end of this first row.

### 3. Last Panel first row:

Insert a correct sized spacer between the end of the first row and the wall to ensure the correct expansion gap is left. Before cutting this last panel first turn it around through 180° so the overhanging male profile on the short edge is facing the spacer / wall. This will ensure you have the correct profile required when positioning. Measure the length of this panel to fit (Fig 4), cut to correct length (minimum length

350mm). Note - The remaining part of this panel will start the next row.

### 4. First Panel second row:

Insert a spacer between the end of the first row and the wall (expansion gap). Start this new row with the leftover piece from the last row (min length 350mm – Fig 5). Insert the upper male profile of the long side of the panel into the corresponding lower profile of the long edge of the panel in the previous row, at a slight angle. Press down until it locks into place. Always try to stagger the short joints approx. 150mm from the nearest short joint in the previous row (Fig 6). Do not forget to include the required expansion gap to the wall.

### 5. Second Panel Second Row:

Gently place the panel close to the short end of the previous one (Fig 7) and fold it down in a single action movement ensuring the corner of the long and short sides connect into the corresponding profiles of the short edge of the first panel second row, and the long edge lower profile of the corresponding panel in the previous row respectively. Press down firmly to lock into place. Gently tap this short edge joint perfectly into place using the rubber mallet.

### 6. Remaining Rows:

Fit subsequent panels into place in the same way by easing the upper and lower profiles together on the long edges taking care to gently tap the short edge profiles together using the rubber mallet until they lock into place. Remember to place spacers to ensure the correct expansion gap has been left at the walls (Fig 8). Continue in this way to the last row.

### 7. Last Row:

To cut the panels to fit the last row, position them one at a time directly over the previous row in the direction you will be laying them. Lay these panels on top of the installed row (Fig 9). Hold them firmly in place. Then line up a third panel on top. Place the edge of this panel against the wall after inserting a spacer. Use the edge of this panel to mark the cutting line with a pencil on the panel beneath (minimum width

50mm). Carefully scribe along this line with the utility knife. Remember to place a spacer to the wall before measuring to ensure the correct expansion gap is left. After scribing cut the panels lengthwise. Remember to allow for the expansion gap. Carefully cut any excess with either a saw or a sharp utility knife. If needed a pull bar can be used to pull the panel of the last row into the corresponding profiles of the penultimate row.

### 8. Radiator Pipes:

Mark the centers of the holes on both the long and short sides using a carpenter's square and a pencil. Where the marks cross, drill a pilot hole using a thin #6 or #8 drill bit. Further drill the hole with a spade bit wide enough to accommodate both the diameter of the pipe and the required expansion gap. Cut around as shown with a saw or with a sharp utility knife (Fig 10). Install the floor panel. If necessary put a bead of contact glue on the cut piece and replace. Insert a spacer directly behind the inserted piece to wedge it in place ensuring that the correct sized expansion gap has been left. Leave this in place until the glue has hardened (Fig 11).

### 9. Door Frames / Architraves:

When installing Expona EnCore Rigid Loc Flooring around a door frame or architrave cut into the door frame / architrave with a handsaw, using an offcut panel as a guide for the height and the amount to trim off the door frame. Slide the cut piece under the door frame.

Because Expona EnCore Rigid Loc Flooring is a floating floor, it can be walked on straight away after it has been installed. Remember to take out any offcuts or spacers you have used to gauge the expansion gap around the perimeter. Skirting boards, base boards, quadrants or scotia can be used to conceal the expansion gap, however they should be fitted directly to the wall or skirting board and never directly onto the surface of the product. Leave a small gap between the two (2mm) to allow for the natural movement of the plank.



# FLOORCARE

Every design in the EnCore collection features a polyurethane reinforcement (PUR) surface treatment to provide protection against everyday wear. We do however propose the following floor care guidelines to help you keep your floor looking its best.

**Initial Clean**  
We recommend you sweep or vacuum to prevent loose dirt or grit from scratching the floor. Polishing your floor can also be beneficial to help prevent slight surface scratches and to provide further protection.

**Day to day cleaning**  
Regularly sweep or vacuum your floor to remove loose dirt, grit or dust. It's important to use clean mops and neutral cleaning solutions to regularly clean your floor. You should always dilute the floor cleanser to the manufacturer's instructions.

Please ensure you mop your floor evenly and collect any excess liquid in a mop bucket. Rinse the floor with clean water and allow to dry.

**Regular cleaning is more beneficial to the floor covering and is more cost effective than occasional heavy cleaning.**

### PLEASE DO

- ✓ Install barrier mats at entrances to pick up grit and moisture. (Please note, some rubber-backed mats may discolour the floor)
- ✓ Ensure your furniture is fitted with protective pads where necessary to prevent scratches.
- ✓ Use protective cups under heavy furniture to prevent indentation.
- ✓ Remove spillages as quickly as possible to reduce risk of staining and causing slip hazards.
- ✓ Always use clean equipment when maintaining your floor.
- ✓ Regularly trim pets claws as these can cause fine scratches.

- 1 Daily Cleanse 750ml
- 2 Prepare 750ml
- 3 Polish & Protect 750ml
- 4 1x Blue Applicator
- 5 1x Coarse Stripper Pad
- 6 Soft Polishing Pad
- 7 Floor Protector Pads
- 8 Floor Care Guide

### PLEASE DON'T

- ✗ Use abrasive liquids or metal scouring pads as these can damage the floor.
- ✗ Clean the floor with solvents, caustic detergents, washing up liquids, soap powders, bleach, furniture polishes, petroleum based products, pine gels, stain removers or highly coloured products. Such products may make the floor slippery or cause permanent damage.
- ✗ Drag furniture with unprotected feet across the floor.



## GUARANTEE

### 15 Year Residential Guarantee

The Expona EnCore Rigid Loc Luxury Vinyl Flooring Collection has been developed to meet the highest technical specification of its product type. Ideal for all areas of the home, the products ensure high performance and optimum style.

Compared with many alternative flooring options, EnCore will under normal conditions, resist household stains and will not crack, chip or splinter. All products purchased from the range are guaranteed for 15 years against normal wear and tear in residential environments, provided that they have been fitted correctly and maintained in accordance with Polyflor Ltd's instructions. Full terms and conditions of the guarantee are available on request from Polyflor Ltd.

## BEAUTIFULLY SUSTAINABLE

Polyflor have, for many decades, been recognised as a leading global manufacturer of high quality, high performance floor coverings. We have demonstrated a high level of commitment to producing sustainable products and as such are ISO 14001, ISO 9001 and SA 8000 certified, ensuring the best environmental, quality and ethical performance.

EnCore is 100% recyclable and contains an average of 15% recycled material, and can be recycled via Recofloor, a vinyl flooring take-back scheme for recycling post consumer waste.

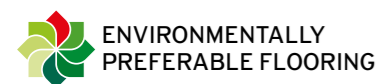
Choosing an environmentally preferable product from Polyflor means zero compromise in the function of the product.

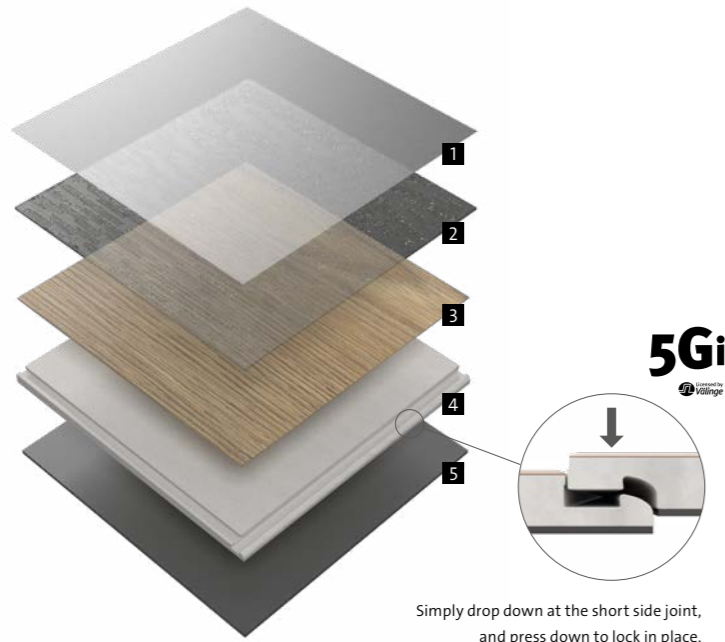


### VOC EMISSIONS:

Indoor Air Comfort GOLD - Eurofins certified product  
AgBB - Low result

For further details on Polyflor's achievements in areas such as recycling, energy reduction and waste avoidance visit [www.polyflor.com/sustainability](http://www.polyflor.com/sustainability)





Simply drop down at the short side joint, and press down to lock in place.

1. **Polyurethane Reinforcement (PUR)**  
The PUR treatment supports a simple cleaning regime.
2. **Clear Embossed Wear Layer**  
This transparent, extremely dense layer is hardwearing and protects the decoration of the product. This allows the surface embossing to create a highly authentic effect.
3. **The Decoration Layer**  
An innovative printing technique makes the high clarity design film a true representation of natural materials.
4. **Rigid Loc Layer**  
The stable layer can hide subfloor imperfections and the 5G-i locking mechanism allows for quick and easy installation.
5. **Acoustic Backing**  
The acoustic backing helps reduce impact sound, and makes the floor softer and warm underfoot.

Characteristics	Standards	Unit	EXPONA EnCORE RIGID LOC
Type of floor covering	EN 16511		Multilayer Modular Floor Covering
Surface treatment			PUR
Total weight	EN ISO 23997	g/m <sup>2</sup>	10,800
Performance classification	EN ISO 10874		23, 34
Gauge	ISO 24337	mm	6.5
Wear layer thickness	EN ISO 24340	mm	0.55
IXPE acoustic layer		mm	1
Packaging and plank size (excluding tongue and groove)	ISO 24337	mm	10 @ 177.35 x 1212.4 = 2.15 m <sup>2</sup> 9 @ 196.4 x 1212.4 = 2.14 m <sup>2</sup>
Dimensional stability	EN ISO 23999	%	≤ 0.2
Residual indentation	EN ISO 24343-1	mm	≤ 0.1
Impact resistance	EN 13329 Annex F	mm	Pass ≥ 1800
Colour fastness to artificial light	EN ISO 105-B02	level	≥ 6
Behaviour to fire	EN 13501-1		Bfl - s1
Slip resistance	DIN 51130 EN 13893		R10 Class DS (dry conditions)
Impact sound reduction	EN ISO 10140-3	dB	19
Chemical resistance	EN ISO 26987		*
Abrasion resistance	EN ISO 10582 EN 13329		Type I ≥ 4000 cycles
Castor chair suitability	EN 425		Yes, 25,000 cycles, type W, EN 12 529
Furniture leg	EN 424		Pass (no visible damage)
Swelling	ISO 24336	%	Pass (0.0)
Underfloor heating suitability	EN 1264-2		Suitable max. 27 °C
VOC emissions	Indoor Air Comfort Gold		Eurofins certified product

\* Resistant depending on concentration and time of exposure, in case of increased impact of oils, grease, acids, alkalis and other aggressive chemicals please contact us.

ORDER SAMPLES

We highly recommend you view an original sample of your favourite designs, which is why we offer a complimentary sample service.

Visit our website or call the dedicated Polyflor Samples Hotline on +44 (0)161 767 2551

TECHNICAL SUPPORT

For general information on your specific project, speak with your local Expona EnCore Rigid Loc provider.

If you require specific detailed technical data, contact Polyflor Customer Technical Services on + 44 (0)161 767 1912 or email tech@polyflor.com

WWW.POLYFLORATHOME.COM

pahteam@polyflor.com



# EnCORE RIGID LOC

## POLYFLOR™ INTERNATIONAL

### Australia

Polyflor Australia  
Tel: 1800 777 425  
E-mail: sales@polyflor.com.au

### Canada

Polyflor Canada Inc.  
Tel: +1 905 364 3000  
E-mail: sales@polyflor.ca

### China

Polyflor Hong Kong  
Tel: +(852) 2865 0101  
E-mail: info@polyflor.com.hk

### France

James Halstead France SAS  
Tel: +33 (0) 8 20 20 32 11  
E-mail: info@jhfrance.fr

### Germany

objectflor Art und Design Belags GmbH  
Tel: +49 (0) 2236 966 330  
E-mail: info@objectflor.de

### India

Polyflor India Pvt Ltd  
Tel: +91 22 4023 2485  
E-mail: info@polyflor.co.in

### Ireland

Polyflor Ireland  
Tel: +353 (1) 864 9304  
E-mail: salesireland@polyflor.com

### New Zealand

Polyflor New Zealand  
Tel: +64 9 269 1111  
Tel: 0800 765 935  
E-mail: sales@polyflor.co.nz

### Norway

Polyflor Nordic  
Tel: +47 23 00 84 00  
E-mail: firmapost@polyflor.no

### Poland

Polflor Sp. Z o.o.  
Tel: +48 (0) 61 820 3155  
E-mail: polyflor@polflor.com.pl

### South Africa

Poly Sales Africa (Pty.) Ltd  
Tel: +27 11 609 3500  
E-mail: info@polyflor.co.za

### Sweden

FalckDesign AB  
Tel: +46 (0) 300 15820  
E-mail: info@falckdesign.com

[www.polyflorathome.com](http://www.polyflorathome.com)

[www.polyflor.com](http://www.polyflor.com)



## POLYFLOR™ HEAD OFFICE

POLYFLOR LTD. PO BOX 3 RADCLIFFE NEW ROAD WHITEFIELD MANCHESTER M45 7NR UK

UK SALES DIRECT: +44 (0)161 767 1122  
UK SAMPLE REQUESTS: +44 (0)161 767 2551

EXPORT SALES DIRECT: +44 (0)161 767 1913  
TECHNICAL SUPPORT: +44 (0)161 767 1912

RECEPTION: +44 (0)161 767 1111  
E-MAIL: PATEAM@POLYFLOR.COM

**POLYFLOR™**  
COVERING THE WORLD

*James Halstead™*  
FLOORING