

LEISURE AND HOLIDAY PARK WASHROOM SOLUTIONS



DVS
Dart Valley Systems

FRANKE

FRANKE WATER SYSTEMS

World leader in supplying
washroom solutions

“Franke’s brand promise is to ‘Make It Wonderful’, whether you are a business partner or an end user”

Over 235 years of experience

Franke has been specialising in products for commercial washrooms for over 200 years and Dart Valley Systems are a market leader in the field of water-saving products along with automatic washroom solutions for over 30 years. Together Franke and DVS have united in order to provide one wonderful solution to specialist applications.

When organising a trip or a fun day out with the family, the facilities available are of the utmost importance and can transform an experience. Franke Water Systems offer a comprehensive range of stainless steel and Miranit composite sanitaryware, washroom accessories, flushing systems, washbasins and washtroughs, showers, taps, drinking fountains and more in order to provide one complete solution for any leisure, recreation or holiday experience.



Contents

Accreditations	4
Leisure & recreation overview	6
Free-standing soap & sanitiser dispensers	8
Miranit composite washbasins	10
Miranit composite washtroughs	12
RondaTop and QuadroTop	14
Planox washtroughs	16
Water saving taps	18
Touch-free taps	20
Cambrino baby changing tables	22
Shower panels	24
Stainless steel accessories	26
Soap and sanitiser dispensers	28
Drinking fountains	30
WCs, cisterns & flushvalve kits	32
Stainless steel urinals	34
Catering solutions	36
Cleaning and janitorial	38



CE/UKCA MARKING is applied to products to indicate conformity to the current regulations. Certifications can be found on our websites.

BREEAM Franke can assist specifiers in achieving BREEAM points for projects with a range of water and energy efficient products.

UNIFIED WATER LABEL Part of the BMA, the water efficient product label focuses on specific water saving products that are particularly water efficient.



NSF TMV3

TMV3 scheme ensures that products are suitable for healthcare environments and provide a safe water supply.



WRAS promote, encourage and enforce the prevention of waste, undue consumption, misuse, or contamination of water.

HOLDERS OF ISO9001 globally recognised rigorous set of standards for quality management.

HOLDERS OF ISO14001 globally recognised rigorous set of standards for environmental management

ACCREDITED CONTRACTOR CHAS The Contractors Health and Safety Assessment Scheme improves health and safety standards across the UK.

SAFE CONTRACTOR APPROVED SafeContractor delivers a tailored health and safety accreditation.

CONSTRUCTIONONLINE Help buyers to simplify and speed up their search, improving resource and cost efficiency through the validation of purchasing decisions. Based on suppliers completion of multiple document working to the PAS 91 criteria.

RIBA CPD We offer a choice of RIBA approved CPD interactive seminars – a must for anyone specifying washrooms for commercial projects.

BMA The Bathroom Manufacturers association acts as an information highway between Industry Government and the consumer on all issues that affect the bathroom business in the UK.

WELS Australian Standards relating to product quality, including health and safety efficiency.



UNIFIED WATER LABEL

The Unified Water Label is a smart tool that provides a means to identify water-using products, with a common label that offers clear, concise and easy to understand messaging about water and energy consumption.



NBS SOURCE is a tool that creates a single source for product information and data. There are over 200 products listed and a range of corresponding BIM models available for both Franke and Dart Valley branded ranges.



WATER TECHNOLOGY LIST (WTL) WTL provides details of products that qualify for the enhanced capital allowance scheme, both Franke and Dart Valley branded ranges are listed in the database.

LEISURE & RECREATION

From adventure parks and days out to camping holidays...

Versatile solutions from Franke Water Systems UK

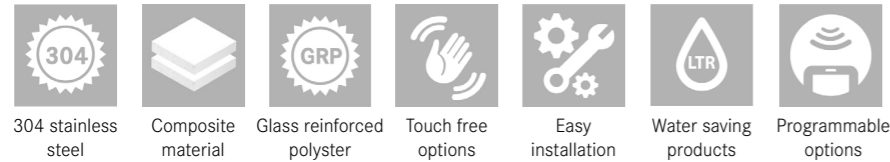
Franke Water Systems provides intelligent sanitaryware and washroom products for public, semi-public and commercial facilities. From washrooms, shower rooms and toilet facilities to cleaning and hygiene areas, Franke Water Systems offer a comprehensive range of versatile product solutions.

Our technology and material expertise

Franke Water Systems have designed and developed a range of product technology in the highest quality materials in order to provide high performing solutions. From our patented FRAMIC innovation cartridge to our Miranit composite material, we have products for every environment. Our range of products for leisure and recreational environments is limitless and includes stainless steel, GRP and Miranit solid surface washbasins and washtroughs, free standing and wall mounted soap and hand sanitiser dispensers, a vast range of sanitaryware, taps, accessories, cleaning, janitorial and catering equipment.

Specification considerations

When designing washrooms for high usage areas such as campsites, leisure parks and other attractions, it is important to consider the types of products and how they cater to all users needs. Campsites in particular will need to have products available that are able to cope with a high number of users and be fit for purpose. Considerations may include adding a higher number of washbasins in the toilet facilities, after all this will be the main port of call for users brushing their teeth, washing hands, showering, and using the toilet. Therefore, it is important to consider high quality robust sanitaryware and the correct amount of products when designing and purchasing products for these areas.

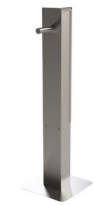


FREE-STANDING SOAP AND SANITISER DISPENSERS

Perfect for the entrance of any building

Liquid soap and hand sanitiser dispensers

Manufactured from high quality durable stainless steel, these free-standing soap and sanitiser stations are ideal for almost any environment, from campsites to large holiday parks, whether it be in the visitors centre, or outside food courts and restaurants. Each unit can be easily refilled, either through the key lock fronts (Franke branded versions) or access panel (DVS branded versions). The battery operated touch-free operation and free-standing design adds ultimate flexibility when positioning.



DVS TOUCH-FREE HAND SANITISER DISPENSER WITH STAND

High quality stand with a small footprint which includes a DVS branded bib sanitiser dispenser and concealed 1.6 -2 litre refillable bottle.* Please note the DVS branded dispenser is only suitable for alcohol-free sanitiser.

AC00-050 201.0624.808



TOUCH-FREE SANITISER/SOAP DISPENSER WITH SLIMLINE STAND

Slimline stand with a small footprint and anti-spill tray. All touch-free dispensers have inspection window and key lock.*

RODX627H-STD37 201.0624.739 Rodan sanitiser

RODX625H-STD37 201.0624.735 Rodan soap dispenser

STRX625-STD37 201.0624.801 Stratos soap dispenser

EXOS625X-STD37 201.0624.803 Exos. soap dispenser

EXOS627X-STD37 201.0631.096 Exos. sanitiser



TOUCH-FREE SOAP/HAND SANITISER DISPENSERS WITH PREMIUM STAND

Premium stand with a small footprint and anti-spill tray. All touch-free dispensers have inspection window and key lock.*

RODX627H-STD36 201.0624.740 Rodan sanitiser

RODX625H-STD36 201.0624.737 Rodan soap dispenser

STRX625-STD36 201.0624.802 Stratos soap dispenser

EXOS625X-STD36 201.0624.804 Exos. soap dispenser

EXOS627X-STD36 201.0631.098 Exos. sanitiser

*Junior heights and manual dispensers are also available.



For holiday parks and leisure facilities, bespoke outdoor dispensers are available on request, Please call us on **01246 458900** to discuss your requirements.



Complementary parts

AC00-008 201.0631.912 Alcohol-free 5 litre gel refill

AC00-052 201.0624.809 70% alcohol 5 litre sanitiser refill

WALL MOUNTED SOAP AND SANITISER DISPENSERS

Robust touch-free accessories



VANDAL RESISTANT TOUCH-FREE SOAP AND SANITISER DISPENSER

Stainless steel touch-free dispenser suitable for sanitiser, liquid soaps and lotions. 800ml refill tank.

AC00-030 201.0615.051



EXOS. TOUCH-FREE SANITISER/SOAP DISPENSERS

Stainless steel touch-free dispensers. 800ml refill tank.

EXOS627X 201.0631.106 Sanitiser dispenser-steel front

EXOS625X 201.0000.044 Soap dispenser - steel front

EXOS625B 201.0000.042 Soap dispenser - black front

EXOS625W 201.0000.043 Soap dispenser - white front

EACCS055 230.0601.308 Sanitiser conversion kit



STRATOS TOUCH-FREE SANITISER/SOAP DISPENSERS

Stainless steel touch-free dispenser suitable for liquid soaps and lotions. 800ml refill tank.

STRX627 201.0631.105 Sanitiser dispenser

STRX625 201.0000.042 Soap dispenser

EACCS057 230.0598.604 Sanitiser conversion kit



RODAN TOUCH-FREE SANITISER/SOAP DISPENSERS

Stainless steel touch-free dispensers. 800ml refill tank.

RODX627H 201.0615.053 Sanitiser dispenser

RODX625H 201.0622.783 Soap dispenser

EACCS055 230.0601.308 Sanitiser conversion kit

WALL MOUNTED SOAP AND SANITISER DISPENSERS

Maximise your visitors hand hygiene with the Franke range of soap and sanitiser dispensers. Manufactured from high quality stainless steel, this durable touch-free range of soap and sanitiser dispensers release a predefined amount of soap when triggered. The four different styles enable a perfect fit for any washroom whether it be a small visitor centre toilet or a large campsite washroom facility.



Touch free operation



304 stainless steel



Hygienic material



Easy to clean



SO10L	220.0000.000	Replacement liquid soap (10L)
AC00-052	201.0624.809	Replacement hand sanitiser 70% alcohol
EACCS055	230.0601.308	Sanitiser conversion kit for Exos. & Rodan soap dispensers
EACCS057	230.0598.604	Sanitiser conversion kit for Stratos soap dispenser

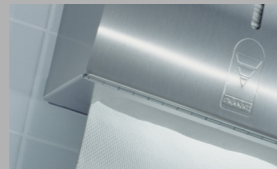
EXOS627X

ACCESSORISE

Robust washroom accessories



EXOS. - Available in three colours; black, white and stainless to suit all styles.



Stratos - Rounded style, finished with Inoxplus anti-fingerprint coating

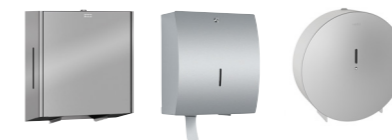


Rodan - Classic style, designed to suit a variety of environments.

CHR670

High quality stainless steel accessories

Accessories are a vital part of any washroom and breaking away from mismatching sanitaryware and accessories can separate your washroom from the rest. Adding coordinating ranges of accessories such as matching soap dispensers, hand dryers and waste bins can bring the room to life and add value to the whole washroom.



JUMBO TOILET ROLL HOLDER

EXOS670X	201.0479.701	Exos.
STRX670	201.0000.060	Stratos
CHR670	201.0000.059	Rodan



DOUBLE TOILET ROLL HOLDER

EXOS676X	201.0479.684	Exos.
EXOS676B	201.0479.685	Exos.
EXOS676W	201.0479.687	Exos.
STRX672	201.0515.181	Stratos
RODX672	201.0000.056	Rodan



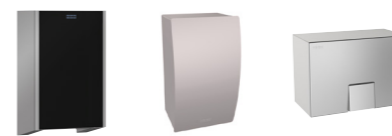
LIQUID SOAP DISPENSER

EXOS618X	201.0000.041	Exos.
EXOS618B	201.0000.039	Exos.
EXOS618W	201.0000.040	Exos.
STRX619	201.0000.024	Stratos
RODX619	201.0000.017	Rodan



HAND TOWEL DISPENSER

EXOS637X	201.0000.047	Exos.
EXOS637B	201.0000.045	Exos.
EXOS637W	201.0000.046	Exos.
STRX600	201.0515.168	Stratos
RODX600	201.0000.000	Rodan



HAND DRYER

EXOS220X	201.0479.675	Exos.
EXOS220B	201.0479.676	Exos.
EXOS220W	201.0479.677	Exos.
STRX220	201.0473.301	Stratos
RODX310	201.0000.132	Rodan



WASTE BIN

EXOS605X	201.0000.035	Exos.
EXOS605B	201.0000.033	Exos.
EXOS605W	201.0000.034	Exos.
STRX607	201.0000.078	Stratos
RODX607	201.0000.089	Rodan

MIRANIT COMPOSITE WASHBASINS

Stylish and practical



AQUARIUS 45° SPOUT

Touch-free spout with a satin finish and PEX hoses. Nominal 5 litre per minute flow rate.

AT03-011 208.0000.080



F3S MIXER TAP

F3 mixer self-closing mixer tap, Nominal 3 litres per minute flow rate.

F3SM1001 208.0563.601



MIRANIT QUADRO WASHBASINS WITHOUT TAP HOLES

Dimensions: 125 x 530 mm (H x D)

ANMW410	203.0000.018	Single 600 mm (W)
ANMW420	203.0000.021	Double 1400 mm (W)
ANMW430	203.0000.024	Triple 2100 mm (W)

MIRANIT QUADRO WASHBASINS WITH TAP HOLES

Dimensions: 125 x 530 mm (H x D)

ANMW411	203.0000.149	Single 600 mm (W)
ANMW421	203.0460.133	Double 1400 mm (W)
ANMW431	203.0000.132	Triple 2100 mm (W)

MIRANIT RONDA WASHBASINS WITHOUT TAP HOLES

Dimensions: 125 x 530 mm (H x D)

ANMW210	203.0000.129	Single 600 mm (W)
ANMW220	203.0000.009	Double 1400 mm (W)
ANMW230	203.0000.013	Triple 2100 mm (W)

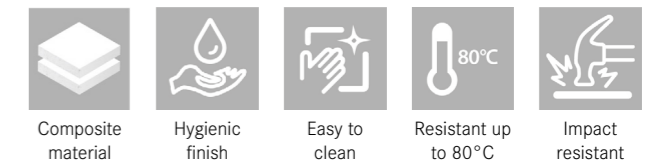
MIRANIT RONDA WASHBASINS WITH TAP HOLES

Dimensions: 125 x 530 mm (H x D)

ANMW211	203.0000.130	Single 600 mm (W)
ANMW221	203.0000.011	Double 1400 mm (W)
ANMW231	203.0000.131	Triple 2100 mm (W)

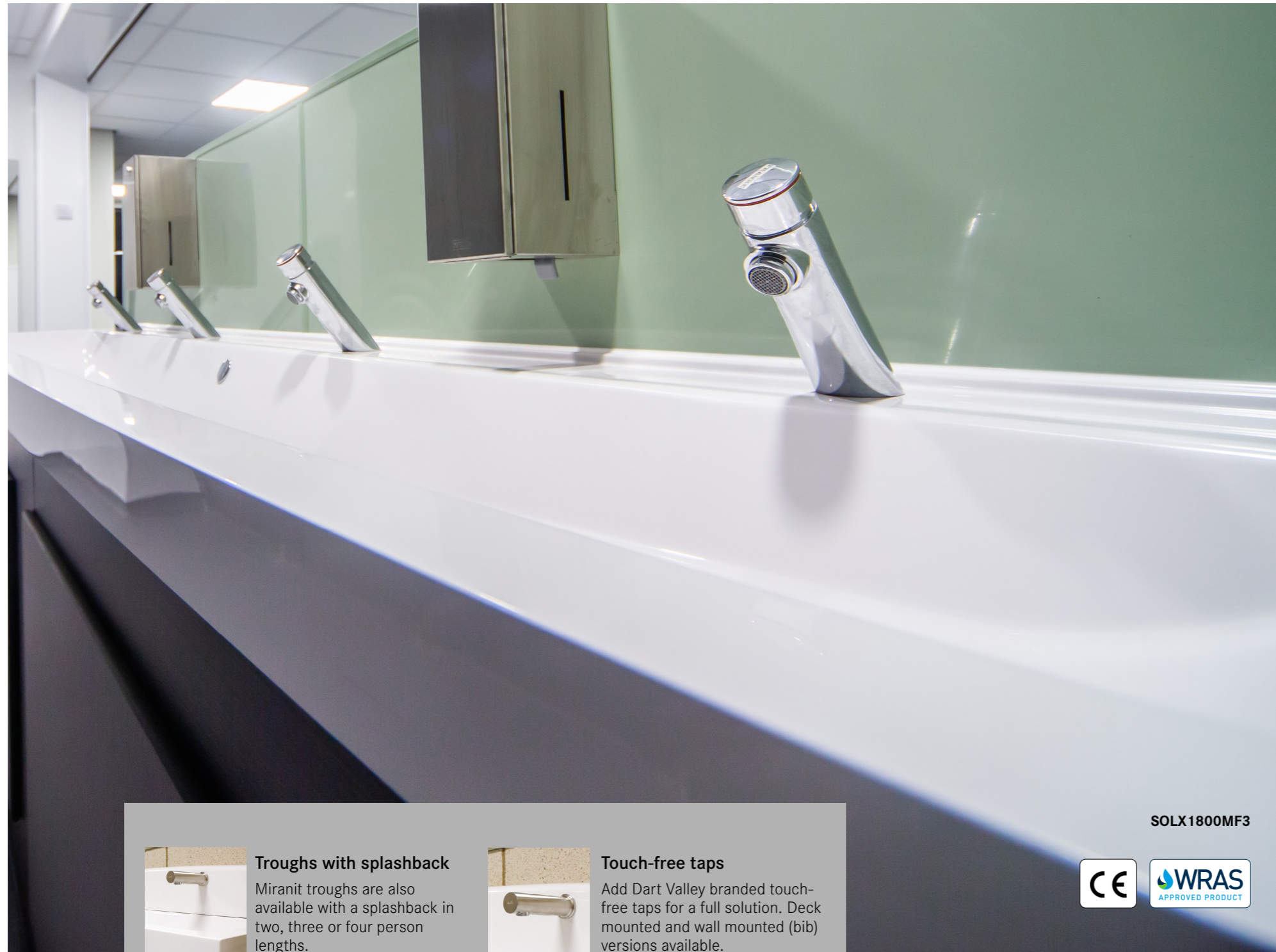
MIRANIT COMPOSITE WASHBASINS

Miranit composite washbasins are ideal for modern leisure washroom facilities as they are manufactured from a robust solid surface material. Available in 1, 2 and 3 person wash stations the basins are ideal for even the largest facilities. The range includes Quadro square basins and Ronda rounded front basins with an option with or without tap holes. Pair with electronic or self-closing taps for a complete solution.



MIRANIT COMPOSITE WASHTROUGHS

Stylish and practical



2 PERSON MIRANIT COMPOSITE WASHTROUGH

Trough dimensions: 1200 x 170 x 480mm (W x H x D)

SOLX1200	203.0000.217	Without tap holes
SOLX1200T	203.0000.226	With tap holes
SOLX1200E	203.0000.218	With electronic taps
SOLX1200MF3	203.0547.761	With self-closing taps



3 PERSON MIRANIT COMPOSITE WASHTROUGH

Trough dimensions: 1800 x 170 x 480mm (W x H x D)

SOLX1800	203.0000.229	Without tap holes
SOLX1800T	203.0000.238	With tap holes
SOLX1800E	203.0000.230	With electronic taps
SOLX1800MF3	203.0547.762	With self-closing taps



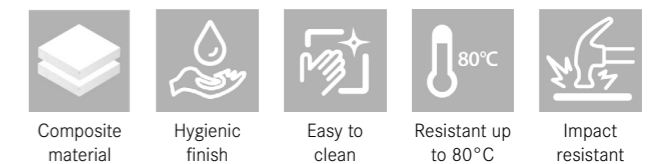
4 PERSON MIRANIT COMPOSITE WASHTROUGH

Trough dimensions: 2400 x 170 x 480mm (W x H x D)

SOLX2400	203.0000.241	Without tap holes
SOLX2400T	203.0000.249	With tap holes
SOLX2400E	203.0000.242	With electronic taps
SOLX2400MF3	203.0547.763	With self-closing taps

MIRANIT COMPOSITE WASHTROUGHS

Manufactured from a robust solid surface material Franke's SOLX Miranit washtroughs are ideal for leisure and holiday park washroom areas. Available in 2, 3 or 4 person wash stations the troughs are ideal for even the largest establishments. Different options available; with or without tap holes, with electronic or self-closing taps and splash-back options.



Troughs with splashback
Miranit troughs are also available with a splashback in two, three or four person lengths.



Touch-free taps
Add Dart Valley branded touch-free taps for a full solution. Deck mounted and wall mounted (bib) versions available.

SOLX1800MF3



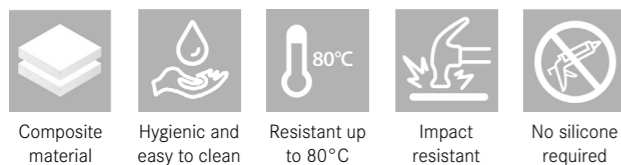
RONDATOP AND QUADROTOP

Suitable for museums, modern restaurants and other leisure facilities

Miranit countertop washbasins

The RONDAtop and QUADROtop countertop washbasins provide a modern design along with hygiene benefits. These eye catching centrepieces have been designed with a unique, integrated seal, providing a streamlined and hygienic finish with easy installation, making additional sealing with silicone is a thing of the past. Manufactured from Miranit composite material, the solid surface basins easily transform the whole washroom and can revamp the overall look and space. Miranit is a poured material and manufactured using a single mould creating a finished product without any adhesive seams or joints.

Complement the washbasins with an elevated self-closing tap from the F5 range or a Dart Valley branded Aquarius high neck tap.



QUADROTOP COUNTERTOP BASIN

Countertop basin manufactured from Miranit composite material. No silicone required due to the integrated invisible seal.

Bowl dims: 355 x 100 x 535mm (W x H x D)

ANMT4001 203.0601.044 Without overflow

ANMT4002 203.0601.041 With overflow

RONDATOP COUNTERTOP WASHBASIN

Countertop basin manufactured from Miranit composite material. No silicone required due to the integrated invisible seal.

Bowl dims: 355 x 100 x 355mm (W x H x D)

ANMT2001 203.0598.590 Without tap ledge

ANMT2002 203.0598.591 With tap ledge



F5S-MIX SELF CLOSING PILLAR MIXER

F5S-Mix self-closing pillar mixer with adjustable, turn-proof temperature stop. Designed with the FRAMIC self-closing cartridge.

F5SM1001 208.0563.593

ACSX1001 208.0599.910 Extension piece



AQUARIUS HIGH NECK SPOUT

Aquarius high neck touch-free spout. Manufactured from chrome plated brass with PEX hose. Station kit required (sold separately).

AT03-061 208.0617.517

AT00-001 214.0544.450 Single battery kit

AT00-002 230.0488.320 Single mains kit



Other tap options

We have a whole selection of self-closing, lever and touch-free taps in the Franke branded F3 and F5 range and a range of touch-free taps in the Dart Valley branded range. To find out more see page 22-25 or visit:

www.franke.co.uk or www.dartvalley.co.uk

PLANOX WASHTROUGHS

Seamlessly welded stainless steel washtroughs

Stainless steel washtroughs

The Planox range of washtroughs offers a functional, easy-to-clean and user-friendly solution whilst ensuring optimum hygiene. Manufactured from 1.2mm thick grade 1.4301 (304) stainless steel with a satin polished finish, these troughs can withstand high usage areas and busy areas such as theme parks, sports centres and holiday parks. The troughs are seamlessly welded using an innovative robotic laser, making them highly resistant to dirt and bacteria. The 1cm lowered tap ledge stops water from spilling on to the floor, preventing hazards and maintaining excellent levels of hygiene.

Planox washtroughs for deck mounted taps

PL6T-UK	203.0564.759	600mm trough with tap ledge
PL8T-UK	203.0564.760	800mm trough with tap ledge
PL12T-UK	203.0563.654	1200mm trough with tap ledges
PL16T-UK	203.0564.761	1600mm trough with tap ledge
PL18T-UK	203.0564.762	1800mm trough with tap ledge
PL24T-UK	203.0564.763	2400mm trough with tap ledge
PL30T-UK	203.0564.767	3000mm trough with tap ledge

Also available with deck mounted taps, see brassware on pages 20-25



Planox washtroughs for bib taps

PL6-UK	203.0564.719	600mm trough without tap ledge
PL8-UK	203.0564.751	800mm trough without tap ledge
PL12-UK	203.0564.752	1200mm trough without tap ledge
PL16-UK	203.0564.754	1600mm trough without tap ledge
PL18-UK	203.0564.755	1800mm trough without tap ledge
PL24-UK	203.0564.757	2400mm trough without tap ledge
PL30-UK	203.0564.758	3000mm trough without tap ledge

Optional shrouds

Conceal plumbing by adding a shroud (available in two sizes).

PL-SHROUD LRG	203.0563.655	For troughs with tap ledge
PL-SHROUD SML	203.0564.788	For troughs without tap ledge

				
304 stainless steel	Bespoke lengths	Hygienic material	Easy to clean	Seamlessly welded



Bespoke lengths between 600mm and 3000mm, with/without splashback or tap ledge are also available. Please call us on 01246 458900 to discuss your requirements.

PL24-UKMF3



Stratos touch-free soap dispenser

Infrared touch-free sensor activation and 800ml tank.

STRX625 201.0000.026



Stratos touch-free paper towel dispenser

Infrared sensor and integrated tear-off edge.

STRX630 201.0000.006

COMPLETE THE WASHROOM

Water saving taps

F3 and F5 range of taps

In highly frequented washrooms such as holiday park toilets or outdoor leisure washroom facilities, it is important to choose taps which reduce the impact of water wastage and vandalism whilst ensuring efficient hygiene.

The F5 range of taps excel in functionality and style and come in three ranges; electronic, self-closing and lever taps. All Franke F5S self-closing taps have been designed with the patented Franke Modular Innovation Cartridge (FRAMIC). The cartridge ensures stagnation-free, hydraulic control of the water flow and sets the highest hygiene standards.

The F3 range has been designed with a classic look in mind. The traditional and elegant design of the F3 taps are ideal for smaller washroom environments such as visitors centres.



*F5S taps only



F5S SELF-CLOSING PILLAR MIXER*

F5S-Mix self-closing pillar mixer with adjustable, turn-proof temperature stop. Designed with the FRAMIC self-closing cartridge. Nominal 5 litres per minute flow rate.

F5SM1001 208.0563.593



F5S SELF-CLOSING PILLAR TAP*

F5S self-closing pillar tap (pre-mixed) with adjustable flow duration. Designed with the FRAMIC self-closing cartridge. Nominal 5 litres per minute flow rate.

F5SV1001 208.0563.594



F5L-MIX PILLAR LEVER TAP

Designed with a mixing cartridge with ceramic disc technology and thermostatic protection from scalding. Nominal 5 litres per minute flow rate.

F5LM1001 208.0563.550 100mm project.

F5LM1002 208.0563.591 125mm project.



F3S SELF-CLOSING PILLAR TAPS

Hydraulically controlled self-closing function which prevents water from flowing back through the system. Nominal 3 litres per minute flow rate.

F3SM1001 208.0563.601 mixer tap

F3SV1001 208.0519.518 pre-mixed



F5EM1001



*The Franke Modular Innovation Cartridge (FRAMIC)

The ceramic self-closing cartridge is the first of its kind in tap disc technology and enables a stagnation-free, hydraulic control of water flow ensuring perfect water hygiene. The operation of the cartridge is flow pressure-independent meaning drinking water is kept completely separate to the functional elements of the tap.

COMPLETE THE WASHROOM

Touch-free water saving taps

High performance touch-free taps

Hand washing has never been so important as it is today. The touch-free and sensor range of taps provides ultimate flexibility in the washroom for any leisure or holiday environment. With three different ranges; F5E, Aquarius wall mounted straight spouts and the Classic range there is a solution for any size or type of washroom. The range of taps are all electronically controlled and provide a hygienic touch-free hand washing solution even in the busiest of environments. These WRAS approved taps come in a range of finishes, from satin and high polish grade 316 stainless steel to high polished chrome plated brass. The range is fully programmable with additional functions such as hygiene purge, lockouts and anti-vandal features. DVS and Franke hand held programmable remotes are sold separately.



AQUARIUS TOUCH-FREE DECK MOUNTED 45° SPOUT

Touch-free spout with a satin finish and PEX hoses. Nominal 5 litre per minute flow rate.*

AT03-011 208.0000.080 140mm project.



AQUARIUS WALL MOUNTED TOUCH-FREE SPOUTS

Touch-free spout with a satin finish and PEX hoses. Nominal 5 litre per minute flow rate.*

AT02-001 208.0000.077 150mm project.

AT02-011 208.0606.402 200mm project.



F5E-MIX ELECTRONIC PILLAR MIXERS

For connecting to hot and cold water via connecting hoses, with an integrated backflow preventer. Nominal 5 litres per minute flow rate.

F5EM1001 208.0563.548 battery

F5EM1003 208.0563.549 mains



CLASSIC SWAN TOUCH-FREE TAP

Touch-free Classic Swan taps with PEX hoses and nominal 5 litre per minute flow rate. Manufactured from chrome plated brass.*

AT01-011 208.0617.515 145mm project.

AT01-001 208.0481.307 145mm project.



AT03-011



Anti-microbial mains and battery kits

*Mains or battery kits are required for Aquarius and Classic touch-free taps.

AT00-220 208.0659.897 Anti-microbial single station battery kit

AT00-221 208.0628.714 Anti-microbial single station mains kit

AT00-222 208.0628.716 Anti-microbial Two station mains kit

AT00-223 208.0628.717 Anti-microbial Three station mains kit

CAMBRINO BABY CHANGING TABLES

Facilities for all ages



VERTICAL BABY CHANGE TABLE

Vertical baby changing table for wall mounting. Manufactured from polypropylene with antibacterial Biocote®.

Dimensions (open): 550 × 480 × 890 mm
Dimensions (closed): 550 × 890 × 100 mm

CAMB22VS 204.0580.890 Stainless steel front

CAMB20VP 204.0580.889 White front



HORIZONTAL BABY CHANGE TABLE

Horizontal baby changing table for wall mounting. Manufactured from polypropylene with antibacterial Biocote®.

Dimensions (open): 860 × 480 × 570 mm
Dimensions (closed): 860 × 565 × 100 mm

CAMB11HS 204.0580.888 Stainless steel front

CAMB10HP 204.0597.789 White front

CAMBRINO BABY CHANGING TABLES

Whether you are visiting an adventure park or away on an outdoor holiday, it is important when you are out and about with young children that the correct facilities are available. Franke Water Systems have designed flexible and modern baby changing tables for wall mounting which can be integrated into almost any washroom environment or baby changing facility.

The range has been developed with two design options (horizontal or vertical) to fit any space, and with a stainless steel or Polypropylene finished front in order to complement any style of modern washroom. The Cambrino baby change units are manufactured with antibacterial Biocote® reducing odor and staining, and comply with BS EN 12221-1 and EN 12221-2 standards, ensuring a hygienic, safe and practical solution.



Safe certified design

Hygienic materials

Easy installation

Easy to clean & maintain

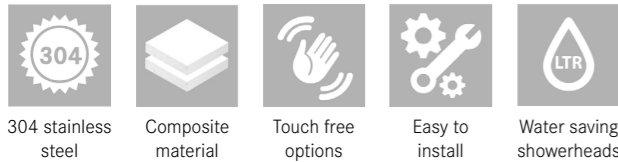
Mounting materials included

CAMPING AND HOLIDAY PARKS

Showers for busy environments

Showering facilities for holiday parks and campsites

When on holiday, comfort is a key consideration, particularly when going on an outdoor adventure holiday, activity holiday or a camping holiday. Location and available facilities are of the utmost importance when it comes to choosing the perfect campsite or location for a relaxing getaway. Franke Water Systems can guarantee all your guests are happy with the range of F5 and DVS branded range of showers. This modern, easy to use range has been designed with quality materials and is available in either Miranit composite or stainless steel which are able to withstand high footfall and continuous use.



304 stainless steel Composite material Touch free options Easy to install Water saving showerheads



F5S-MIX SHOWER PANEL

Miranit composite shower panel for wall mounting with DN 15 self-closing single control mixer.*

F5SM2026 210.0629.599

F5S-MIX SHOWER PANEL

Stainless steel shower panel for wall mounting with DN 15 self-closing single control mixer.*

F5SM2020 210.0629.60



F5E-THERM SHOWER PANEL

Stainless steel shower panel for wall mounting with thermostatic mixer.*

F5ET2020 210.0629.651

DVS STANDARD SHOWER TOWER

Wave-on standard shower tower with high security shower head, mains operated.

SH01-002 210.0633.963



Aquajet slimline

Shower head with plastic jet face with anti-limescale system and low aerosol formation.

SHAS0011 210.0588.383

Aquajet comfort

Adjustable shower head (13–23°) anti-limescale & low aerosol formation.

SHAC0011 210.0588.384

*Shower heads sold separately for F5 shower panels.



Did you know we have over 40 different types of showers to suit a wide range of applications. Take a look at our wonderful shower solutions brochure for more options:
<https://fran.ke/tr8E4Mk>

F5ET2020



High water consumption and continuously increasing operating costs are typical indicators of high usage shower facilities. The Aquapay token system from Franke can provide an economical, water and cost saving solution when combined with the intelligent technology of F5 shower panels.

As every facility is different, we can create a bespoke solution for you, please get in touch to discuss your requirements.

TDV & TMV

Prevents biofilm reducing the risk of water-borne pathogens*

Thermal disinfection and thermostatic mixing valves

In any facility infection prevention should be considered particularly in public areas. The DVS thermal disinfection valve (TDV) has been designed to prevent biofilm, reducing the risk of water-borne pathogens by allowing thermal disinfection from the TMV through to the outlet (1 x TDV is required per TMV). The valve is suitable for taps, showerheads and other washroom equipment fitted with a TMV.





The thermostatic mixing valve (TMV) has been designed for use with basins, showers and baths. The valve is manufactured to control water outlet temperature to fall within +/-2C regardless of fluctuations in temperature and pressure of hot and water supplies. The valve will shut the mixed water outlet immediately if hot or cold water were to fail. The TMV from Dart Valley Systems is WRAS approved under the TMV3 scheme to the DO8 specification.

Thermal disinfection is enabled manually via a hex socket key with quarter turn operation. The integral non-return valves prevent a backflow of water ensuring excellent levels of hygiene. Manufactured from DZR brass which is highly resistant to corrosion and is compatible with 22mm or 15mm pipework (3 x 15mm reducers required).

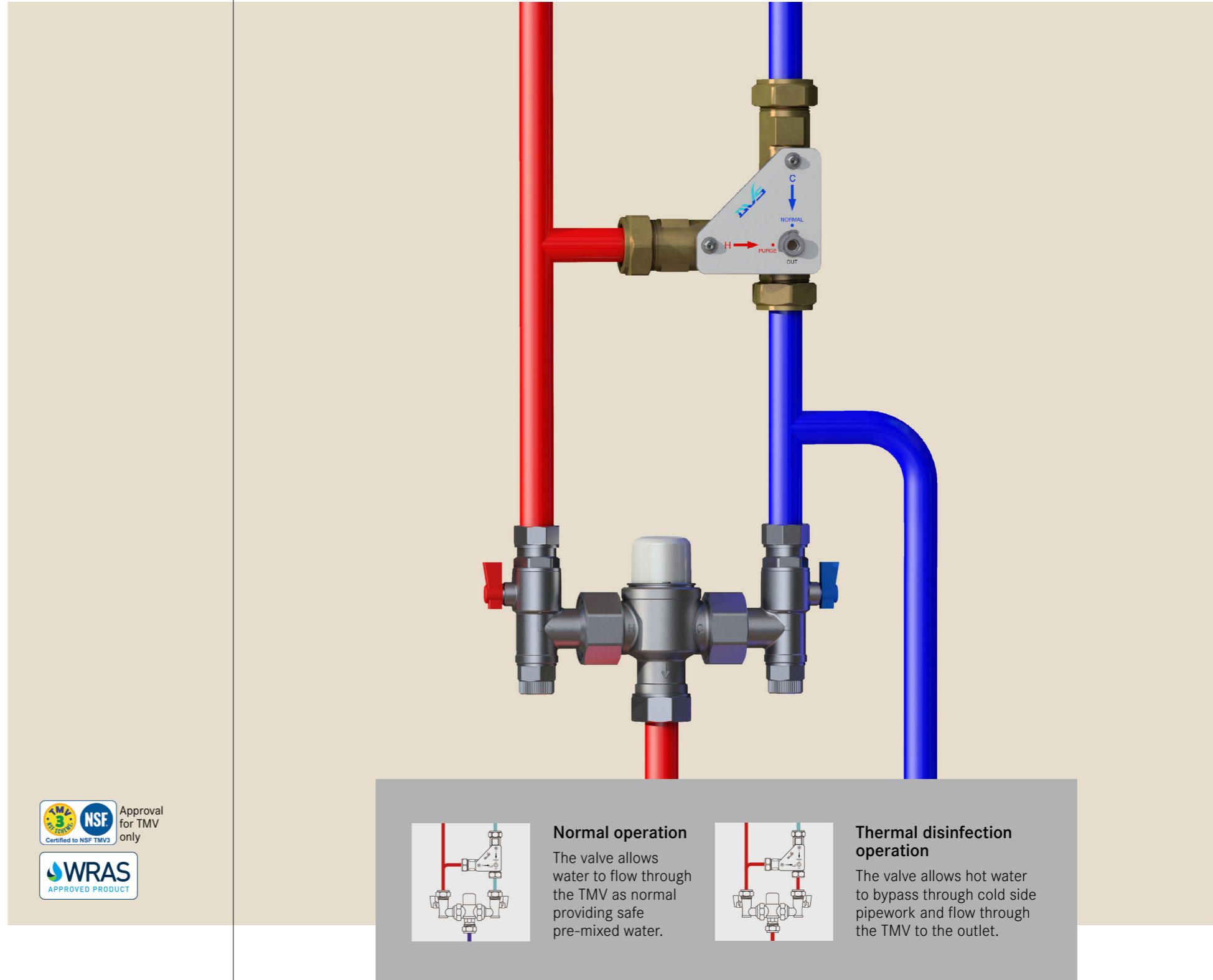
TDV features

- Reduces risk of water-borne pathogens
- Simple, single quarter turn operation
- Integral non-return valves to prevent backflow
- Corrosion resistant DZR brass body
- Suitable for 22mm and 15mm pipework
- Compliant with water regulations and by-laws
- WRAS approved

AC17-080	208.0606.554	Thermal disinfection valve
AC17-047	201.0000.161	Thermostatic mixing valve

			
Reduces risk of pathogens	Compliant with regulations	Robust material	Easy system maintenance

*If installed and maintained to the manufactures instructions



KEEP VISITORS HYDRATED

Drinking fountains for all types of facilities



BREEAM fixing kit

Breeam fixing kit for floor standing chilled drinking fountains. The fixing kit allows the drinking fountain to be placed against the wall and floor, concealing any pipe work or wires, adhering to BREEAM criteria. Dimensions: 354 x 924 x 100 mm (W x H x D)

ANMX315 213.0000.000



STAINLESS STEEL CENTINEL DRINKING FOUNTAIN

Manufactured from 1.2mm thick grade 304 stainless steel. Supplied complete with 19mm waste.

G20100N 213.0000.011 Bubblers only

G20109N 213.0000.013 Bubblers & bottle filler



STAINLESS STEEL DRINKING FOUNTAIN

Manufactured from 1.2mm thick grade 304 stainless steel. Designed with a flat pressed rectangular top with rounded edges.

ANMX300 213.0000.024 Bubblers only

ANMX306 213.0000.002 Bubblers & bottle filler



STAINLESS STEEL DRINKING FOUNTAIN WITH PEDESTAL

Manufactured from 1.2mm thick grade 304 stainless steel. Designed with a flat pressed rectangular top.

ANMX301 213.0000.025 Bubblers only

ANMX307 213.0000.003 Bubblers & bottle filler



FLOOR STANDING CHILLED DRINKING FOUNTAIN WITH WATER FILTER

The fountain is for connection direct to the water mains to supply an unlimited amount of fresh chilled water.

ANMX308 213.0000.004 Bubblers only

ANMX309 213.0000.005 Bubblers & bottle filler

FRANKE DRINKING FOUNTAINS

The free-standing or wall-mounted drinking fountains, made of stainless steel, are the perfect addition to ensure outstanding customer satisfaction. Combined with bubblers and bottle fillers, they can quench the thirst of any visitor, from sports aficionados to sand castle-building beach goers and everyone in between.



304 stainless steel



Chilled options



Easy to install



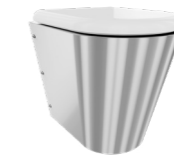
Breeam fixing kit available



ANMX309

SANITARYWARE

Robust touch-free WCs, flushvalves and cistern kits



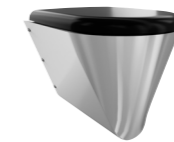
CAMPUS FLOOR STANDING PUSH FIT WC PAN

Manufactured from grade 304 steel. Flushing certified to EN 997, concealed flushing rim with min. 4 litre flushing capacity.

CMPX597B 205.0000.012 Black seat and lid

CMPX597G 205.0000.013 Grey seat and lid

CMPX597W 205.0000.015 White seat and lid



CAMPUS WALL MOUNTED PUSH FIT WC PAN

Manufactured from grade 304 steel. Flushing certified to EN 997, concealed flushing rim with min. 4 litre flushing capacity.

CMPX592B 205.0000.002 Black seat and lid

CMPX592G 205.0000.003 Grey seat and lid

CMPX592W 205.0000.005 White seat and lid



GRP BACK TO WALL WC

High-security WC pan, manufactured from high performance glass reinforced polyester (GRP) material. Dimensions: 400 x 420 x 510mm (w x h x d)

VR01-010 205.0630.320

SANITARYWARE

Modern washrooms need to be functional, stylish and long lasting. Franke have designed a range of robust sanitaryware for a wide range of facilities, whether it be a simple renovation or complete washroom revamp.

Franke's stainless steel and GRP WCs are a perfect choice for busy holiday parks, campsites and leisure facility washrooms as the range is manufactured from extremely robust and hard wearing materials. The Dart Valley branded flush valves and cisterns can complete any busy washroom and provide a water saving solution.



Flush valve kit complete with sensor

Complete with wave on sensor and 1 1/2" base flush valve, control box and 3 metre cable.

WC03-002 209.0583.506



Concealed plastic cistern kit

Includes WRAS approved side entry valve, 2" to 1 1/2" flush pipe, back to pan connector, and concealed vertical cistern.

WC02-014 209.0610.923

CMPX592B



304 stainless steel



Glass reinforced polyester



Robust construction



Easy to clean



Easy to install

STAINLESS STEEL URINALS

Save water with standard and waterless urinals



URINAL POD

Durable stainless steel urinal pods, with duct mounted cistern and water-free options.

CMPX538WF	205.0000.057	push fit, water-free
CMPX538P	205.0000.047	push fit
HDTX538P	205.0000.052	bolt fix



WATERLESS SLAB URINAL

Stainless steel waterless urinal slabs, easy to maintain with unique key system, available with left and right hand wastes.

G20125L	205.0560.088	1200mm left hand
G20125R	205.0000.066	1200mm right hand
G20126L	205.0553.762	1800mm left hand
G20126R	205.0553.763	1800mm right hand



CENTINEL SLAB URINAL

Stainless steel urinal with concealed sparge pipe, complete with cistern. Bespoke lengths and exposed sparge pipe options are also available.

G20117N	205.0000.058	1200 x 300 x 555mm (9l)
G20123N	205.0000.064	1500 x 300 x 555mm (9l)
G20118N	205.0000.059	1800 x 300 x 555mm (13.5l)
G20119N	205.0000.060	2400 x 300 x 555mm (13.5l)

STAINLESS STEEL URINALS

Over half of 'domestic' water used in commercial premises can be due to urinals operating without flush controls. Adding the correct flush controls such as DVS Flushmatic, or installing waterless products can vastly reduce water bills with minimal initial outlay, particularly in high usage areas such as theme parks, holiday parks and more.

All Franke branded urinals are manufactured from robust 1.2mm thick grade 1.4301 (304) stainless steel with a satin finish. The urinals have been specifically designed for easy installation and maintenance.



Urinal control system

Two station urinal control kit, complete with mains control box, two solenoid valves & two sensors

UC07-011 205.0611.714



Urinal flush controls

Flushmatic surface mount kit in White - battery complete with solenoid valve

UC01-005 205.0611.714

G20123N



Water saving



Efficient design



304 stainless steel



Easy maintenance



Robust material

CATERING SOLUTIONS

Stainless steel solutions for all recreational environments

Catering and hand washing

Franke Water Systems has a range of solutions for theme parks, bowling alleys, outdoor adventure parks and more. The range includes catering sinks, preparation tables and a variety of wall shelves. Manufactured from grade 304 stainless steel, this material is highly durable, resistant to corrosion and long lasting. Stainless steel is the perfect material for any large catering environment from campsite canteens to holiday park food courts and restaurants. A range of optional supports, stands and shelves (sold separately) and complementary parts including taps and waste kits provide a full solution.



304 stainless steel



Robust construction



Easy to clean



Easy installation



SINGLE BOWL SINGLE DRAINER MINI CATERING SINK

Manufactured from 1.2mm thick austenitic grade stainless steel polished to a satin finish. Dimensions: 1000 x 900 x 600mm (W x H x D)*

E20601L	214.0000.000	Left hand drainer
E20601R	214.0000.000	Right hand drainer



SINGLE BOWL MIDI CATERING SINK

Manufactured from 1.2mm thick austenitic grade stainless steel polished to a satin finish. Dimensions: 750 x 900 x 650mm (W x H x D)*

E20608N	214.0493.164
----------------	--------------



MINI WALL TABLES

Mini wall tables are manufactured from 1.2 thick austenitic grade stainless steel polished to a satin finish.*

F20601Z	214.0000.121	1200 x 900mm
F20600Z	214.0000.119	900 x 600mm



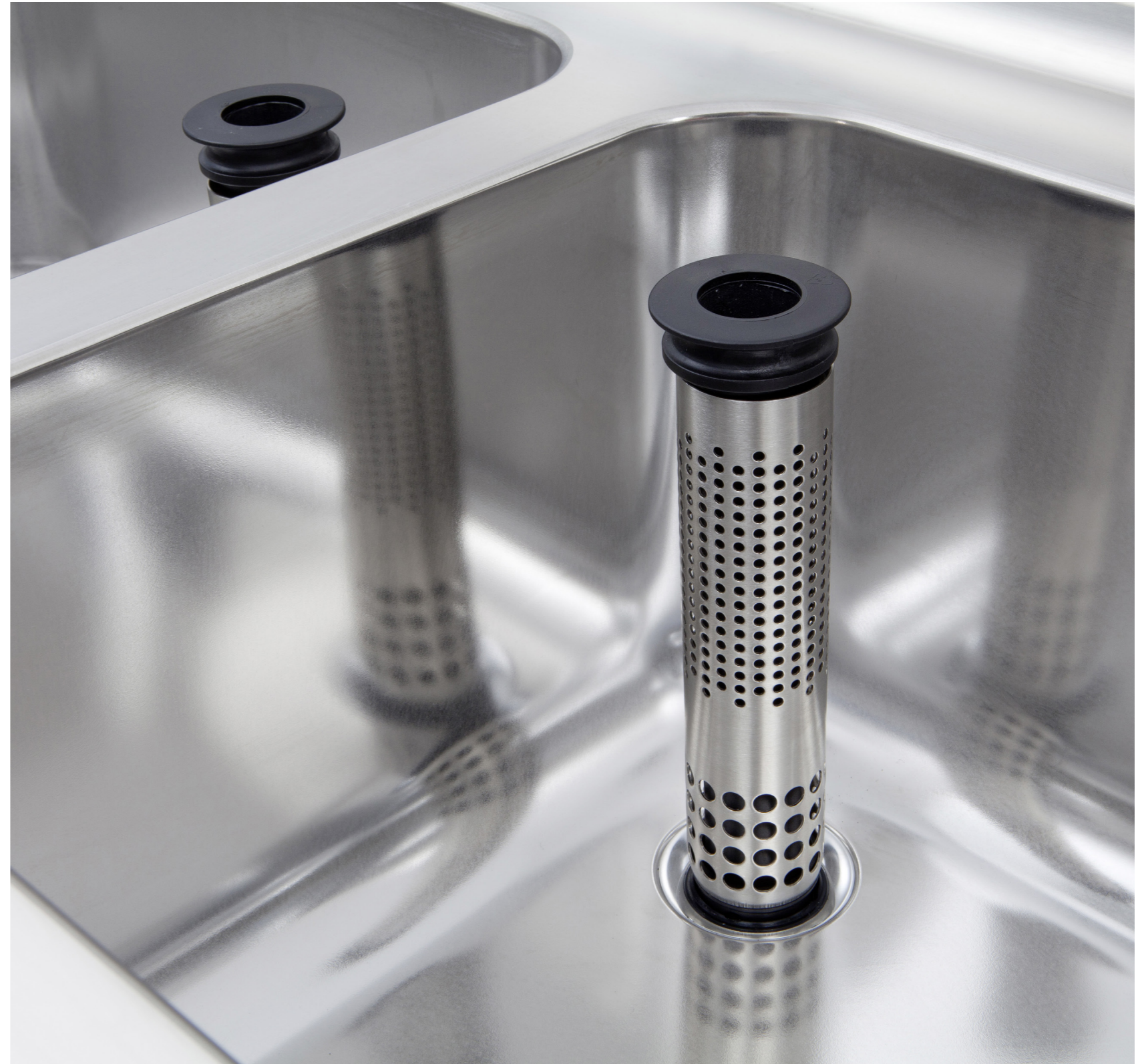
WALL SHELVES

Manufactured from 1.2mm thick grade 1.4016 (430) stainless steel polished to a satin finish.

F10512N	214.0000.168	900 x 300mm
F10515N	214.0000.171	1800 x 300mm

Additional variants and sizes are available, please get in touch to request more information.

*Stand pack sold separately.



CLEANING SOLUTIONS

Janitorial, cleaning and general purpose sinks



Crosshead bib taps

Complete the bucket sink with bib taps. Conforms to BS5412 standard.

F1071/3N 208.0574.188



Monobloc mixer

Add a mixer tap to canteen or staff room sinks. Conforms to BS5412 standard.

F1059N 208.0574.216

G20050N



FLOOR STANDING STAINLESS STEEL JANITORIAL UNIT

Manufactured from grade 1.4301 (304) stainless steel (lower bowl 0.9mm thick) complete with monobloc mixer.

G20050N 207.0000.058



STAINLESS STEEL BUCKET SINK

Manufactured from grade 1.4301 (304) stainless steel, material thickness 1.2mm, with splash back, hinged grating, front leg supports, 38mm BSP waste fitting.

G21663N 207.0000.060



REVERSIBLE SINKS

Manufactured from grade 304 stainless steel these multi-purpose sinks are ideal for canteens or staff room sinks.

F0306NP 203.0529.988 Single bowl sink

F0309NP 203.0529.985 Bowl 1/2 sink

MAINTENANCE

Maintenance is key in any large facility with a high number of visitors. Behind the scenes of any leisure or holiday park you will find cleaning and janitorial facilities in order to keep hygiene to a maximum. Ensure you have the correct products that will last for years to come and provide the maintenance staff with the correct tools to carry out a high standard of cleaning with Franke's range of janitorial and utility products.

Franke's cleaning and janitorial range includes general kitchen sinks, bucket and cleaners sinks, janitorial units and a variety of utility sinks. All manufactured from grade 304 stainless steel these products guarantee the best quality.



316 lab sinks



Easy to clean



Low maintenance



Compliant products

Make
it
Wonderful

NORTHERN OFFICE

Franke Water Systems
14 Napier Court
Gander Lane
Barlborough
S43 4PZ
Phone +44 (0)1246 458900
ws-info.uk@franke.com
www.franke.co.uk

SOUTHERN OFFICE

Dart Valley Systems
Kemings Close
Long Road
Paignton, Devon
TQ4 7TW
Phone +44 (0) 1803 529021
sales@dartvalley.co.uk
www.dartvalley.co.uk

