

Maximum reliability. Minimum fuss.



Selector Guide

Kingspan KS1000 DLTR

Kingspan

Fastener Systems and Sealing Products

Contents

| | |
|------------------------------------|-------|
| Products for Specific Applications | 3 - 5 |
| Accessories | 6 |
| Technical Data | 6 |
| Technical Notes | 7 |

Introduction to Fixfast

Fixfast design, manufacture and supply specialist building fasteners and components for the walls and roofs of industrial, commercial and larger residential buildings. We collaborate with major building envelope system manufacturers, such as Kingspan, to provide them and their clients with engineered fastening and sealing solutions.

This selector guide has been created as an easy to use reference document, identifying the most common fasteners and components for use when installing the Kingspan KS1000 DLTR panel system.

Full technical data for these products along with application uses can be found on our website at www.fixfast.com by searching for the product.

Our specification team can assist in providing NBS specifications for specific projects, whilst our customer services team can answer questions regarding the usage or ordering of Fixfast products.

If you have any queries regarding our products or services then please do contact our customer services team on 0800 304 7616 or by emailing sales@fixfast.com.

KS1000 DLTR primary fixing through magnetic spacer to steel 1.2 - 3.0mm with saddle washer

Use MatchFast® Stainless fasteners in Poppy Red - 04E53

11mm bi-hex, use Fixfast MF1165 drive.



| Total Panel Thickness | Fastener Code * |
|-----------------------|---------------------------------|
| 45mm | MF3-SS-HT-A19-5.5 x 110 - 04E53 |
| 60mm | MF3-SS-HT-A19-5.5 x 130 - 04E53 |
| 70mm | MF3-SS-HT-A19-5.5 x 150 - 04E53 |
| 80mm | MF3-SS-HT-A19-5.5 x 150 - 04E53 |
| 100mm | MF3-SS-HT-A19-5.5 x 180 - 04E53 |
| 120mm | MF3-SS-HT-A19-5.5 x 225 - 04E53 |
| 140mm | MF3-SS-HT-A19-5.5 x 225 - 04E53 |
| 150mm | MF3-SS-HT-A19-5.5 x 225 - 04E53 |

*A4/316 stainless fasteners available for up to 40 year warranty
 *Saddle washer & code - see over

For fixing panels to timber, please contact Fixfast Customer Service team on **0800 304 7616**

KS1000 DLTR primary fixing through magnetic spacer to steel 1.2 - 3.0mm without washer

Use MatchFast® Stainless fasteners in Poppy Red - 04E53

11mm bi-hex, use Fixfast MF1165 drive.



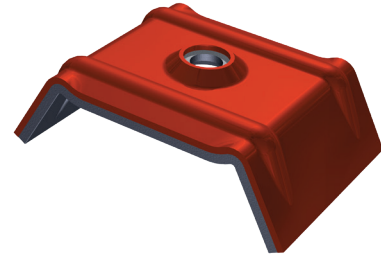
| Total Panel Thickness | Fastener Code * |
|-----------------------|---------------------------------|
| 45mm | MF3-SS-HT-A19-5.5 x 85 - 04E53 |
| 60mm | MF3-SS-HT-A19-5.5 x 110 - 04E53 |
| 70mm | MF3-SS-HT-A19-5.5 x 110 - 04E53 |
| 80mm | MF3-SS-HT-A19-5.5 x 110 - 04E53 |
| 100mm | MF3-SS-HT-A19-5.5 x 130 - 04E53 |
| 120mm | MF3-SS-HT-A19-5.5 x 150 - 04E53 |
| 140mm | MF3-SS-HT-A19-5.5 x 180 - 04E53 |
| 150mm | MF3-SS-HT-A19-5.5 x 180 - 04E53 |

*A4/316 stainless fasteners available for up to 40 year warranty

For fixing panels to timber, please contact Fixfast Customer Service team on **0800 304 7616**

KS1000 DLTR saddle washer for crown main-fix

Use in conjunction with MatchFast® stainless fasteners.



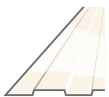
Fastener Code

SDW-HSKS-1000RW - 04E53

KS1000 DLTR stitching fastener for side and end laps

Use Matchfast Stainless fasteners in Poppy Red - 04E53

11mm bi-hex head, use Fixfast MF1165 drive



Fastener Code

MF2-SS-A19-6.3 x 25 - 04E53

Butyl strip sealant for end and side laps

Use A Class butyl strip sealant



| Sealant Code | Thickness x Width (mm) | Roll Length (m) |
|---------------|------------------------|-----------------|
| A-5 x 6 x 9.6 | 5 x 6 | 9.6 |

Air seal to panel side joint

Use Seelex BR gun grade butyl rubber sealant.

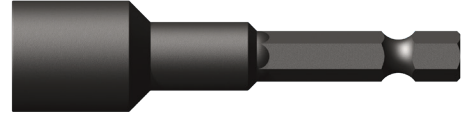
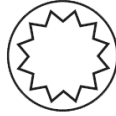


| Sealant Code | Cartridge Size (ml) | Colour |
|--------------|---------------------|---------------|
| SEELEX-BR | 380 | Grey or White |

Accessories

MF1165 Drive

One-piece drive socket for MatchFast® fasteners, supports the head for easy accurate driving.



Product Code: MF1165

Many other tools and accessories are available.

Please see the current Fixfast Product Directory, go to www.fixfast.com, or ask the Fixfast customer service team.

Technical Data

| MF3-SS-HT-5.5 Range | |
|---|---|
| Material | 1.4301 stainless steel (304M), with steel case hardened welded point and UV-stabilised nylon moulded head |
| Coating | Organic |
| Drilling Capacity | 1.2mm - 3.0mm steel |
| Pull-out Values (axial load resistance) | |
| Substrate | Characteristic value |
| 1.2mm Steel | 1.30kN |
| 2.0mm Steel | 2.62kN |
| 3.0mm Steel | 4.76kN |
| Softwood 35mm Embedment | 3.57kN |

| MF2-SS-6.3 x 25 | |
|---|---|
| Material | 1.4301 stainless steel (304M), with steel case hardened welded point and UV-stabilised nylon moulded head |
| Coating | Organic |
| Drilling Capacity | Max 2 x 1.0mm S275 Steel |
| Pull-out Values (axial load resistance) | |
| Fastener | Characteristic value |
| MF2-SS-6.3 x 25 | 0.60kN |

Fastener Data

- + All dimensions are subject to manufacturing tolerances.
- + Performance values are tested and calculated according to Eurocode procedures and appropriate safety factors should be applied in any calculations using these values.

Fastener Selection

- + Recommended fastener lengths are calculated using standard tolerances for the fasteners and the combination of materials in the build-up.
- + If there is distortion in the supporting construction, or other non-standard application detail, longer fasteners may be necessary than those shown. Always check the actual circumstances before deciding on a particular length.

Further Assistance

- + For any enquiry, or to discuss your requirements with someone knowledgeable, call the Fixfast customer service team on **0800 304 7616**.
- + Full literature is available for the Fixfast range, or visit **www.fixfast.com**
- + Other performance data may be available on request. For more unusual applications, tests can be carried out in our in-house technical centre to provide the necessary data.
- + Site visits are also possible, particularly for pull-out performance into concrete, masonry or other variable substrates. Please ask for a Site Visit Request form if you think this service would be useful.
- + CAD files of fasteners are available on request for inclusion in drawings.

The information contained in this document is based on the specification of the Kingspan KS1000 DLTR system and Fixfast's product data. It is provided in good faith but Fixfast cannot be held liable for any errors. Performance is dependent on adherence to the conditions and instructions contained in Fixfast's Technical Data Sheets for the products shown. Performance values should be approved by a qualified engineer, and Fixfast recommend preliminary tests for any application where variation is possible in the materials or substrates involved.



Merlin House
Seven Mile Lane
Borough Green
Sevenoaks
Kent
TN15 8QY

Enquiries
0800 304 7616

International
+44 (0) 1732 882387

Fax
0845 450 7486

Email
info@fixfast.com



Certificate number 10905
ISO 9001, ISO 14001
OHSAS 18001