

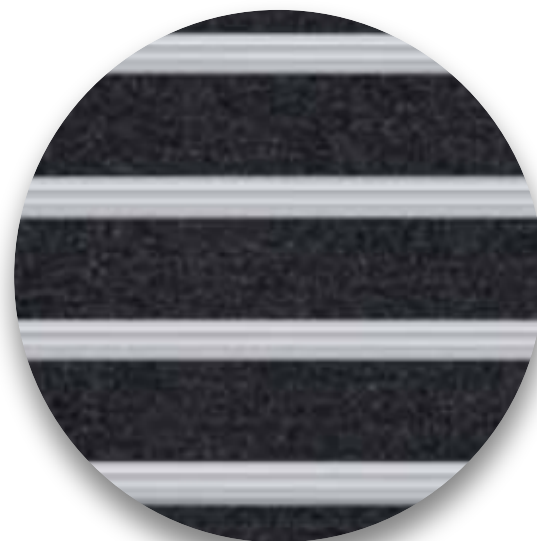
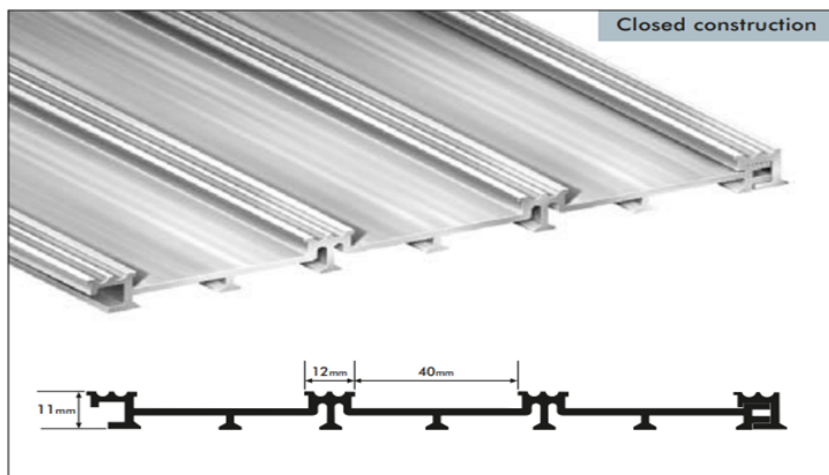


Jaymart

Grime Grabber Aluminium Entrance Matting Information & Specification

Designed with heavy duty Ingenius Polypropylene U.V and rot resistant inserts offering optimal brushing and drying action for internal and external sheltered applications. Brilliant Range of UV and rot resistant colour inserts allow incorporation of designs and logos

Grime Grabber Aluminium Entrance Matting System



Description

A matting consisting of strips of very heavy duty polypropylene Brush zone UV and rot resistant carpeting secured between rigid silver aluminium scraper bars. Designed for indoor use in shops, public buildings, schools, offices, hotels, leisure centres, train stations, bus stations and hospitals.

The matting can be supplied in virtually any size or shape but, for reasons of safe handling, it is recommended that mat sections, which can be butted together, do not exceed 2m².

The Panels interconnect on the front and back panel, the panels on the left to right can make up required by butting panels side by side. The Jaymart system allows for perfect rib alignment without the need for T Bars.

Grime Grabber is 17 mm thick and available in colours detailed below. ether in single or combined colours.

Consult Jaymart Rubber & Plastics Ltd technical literature for details of the finishes available.

Jaymart Rubber & Plastics Ltd can also provide a design and specification service and it is recommended that they be consulted early in the design process.



Proudly Manufactured in The UK



100% Recycled Aluminium



Grime Grabber Complies with BS 8300 - 2:2018 for an inclusive and accessible environment

Wheel Chair Friendly



Grime Grabber can have logos and designs incorporated - please consult Jaymart for more information

17mm
Gauge



Key Features

They trap up to 90% of dirt and moisture, therefore reducing cleaning costs and use of harmful cleaning chemicals

They help to protect the expensive floor finishes reducing the amount sent to landfill.

The panel construction, which allows for rib alignment between panels, renders them stronger than wired construction types which can snap or bend. This also facilitates replacement of insert strips in the unlikely event of damage or desire to change colour scheme. Leading to a useful lifespan of 30 years when refurbished.

This also allows for more elaborate designs to be incorporated if required.

The Insert materials can be customised to maximise performance of the product and if required to make a statement upon entering the building.

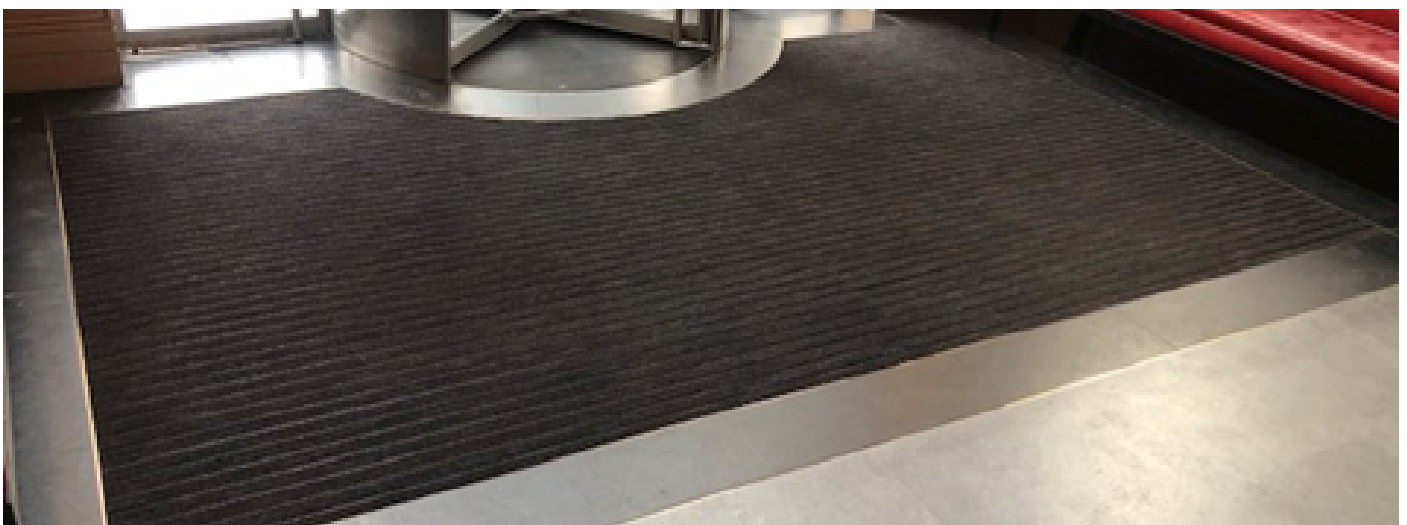
Logos can easily be incorporated into the mat at very reasonable costs.

They can be surface mounted or installed in a recessed matwell.

The mats incorporate 100% Recycled Aluminium and are also easy to recycle after useful life, and so are an environmentally friendly product.

Now can be anodised in colours including antique bronze and black.

10 year warranty.





Our 4 step process to a cleaner environment

Step 1

The best way to keep your premises clean is to stop dirt from even getting through the front door. Effective exterior matting scrapes clean and wipes dry, leaving the worst dirt and grit outside, and allowing subsequent interior matting to clean even better.

Step 2

Working in a similar way to exterior matting, this is similarly tough and durable matting that carries on the work to remove the last of the most damaging soil and grit, and continue the drying process.

Step 3

With the worst of the damp and debris now dealt with, secondary internal matting is a high-specification, high-performance product that finishes the dusting and drying.

Step 4

The foyer is one of the highest traffic areas in your building so, however effective your entrance matting, easy to clean, highly durable and attractive carpet that always looks its best will help you make a great first impression – every time.

Environmental Impact & Sustainability

Our Products Use 100% recycled aluminium and can be recycled after use making our aluminium mat products very environmentally friendly. This combined with the ability to replace the insert material rather than replacing the whole mat, means that although not directly eligible for BREEAM Credits selecting Jaymart will help in supporting your BREEAM certification.

We manufacture in the United Kingdom to precise specifications/ measurements. This means Jaymart can reduce waste and transport.

Our products are extremely Hard wearing and will reduce the need for frequent replacement to support BREEAM MAT 05 criteria and also minimise the use of harmful cleaning chemicals and cleaning/ maintenance costs for the end user.

BREEAM MAT 01 addresses the environmental impact through the life cycle of the product. The Jaymart aluminium entrance matting system have the ability to refurbish rather than replace means that our products can further support your aims. It will also help with meeting BREEAM MAT 06 requirements. We can also offer products made from natural inserts from sustainable sources to further meet environmental aims. The expected useful lifespan when refurbished is 30 years approximately dependent on wear and correct maintenance being carried out.



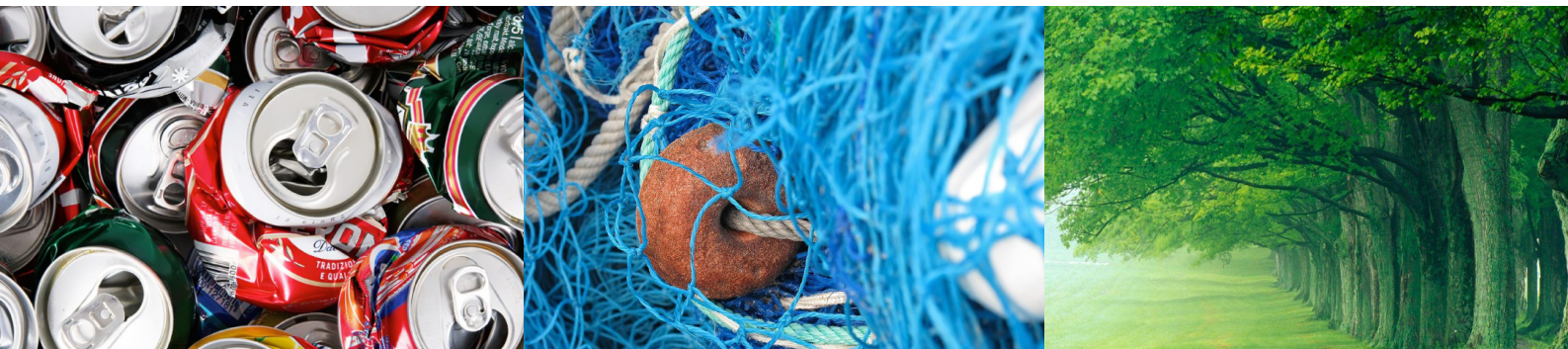
Manufactured in United Kingdom



100% Recycled Aluminium



100% Econyl Recycled Nylon Yarn



Cleaning and Maintenance

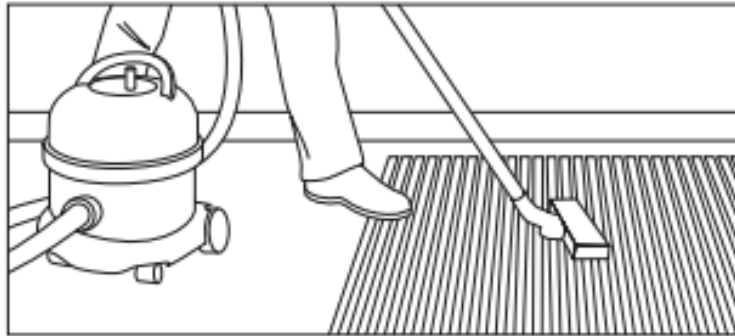
Grime Trapper entrance mats are designed to prevent the foot borne ingress of dirt and moisture into a building.

The aluminum ribs of the mat scrape dirt from shoe soles, whilst the studded design polypropylene offer brushing action/ resistance and absorb moisture. The inserts are quick drying thus making a more effective entrance matting system.

Daily Cleaning

Regular maintenance is vital to ensure that **Grime Trapper** remains effective.

Normal daily soiling can be dealt with using a suction vacuum cleaner. A 2000-Watt model will give better results than a lower powered model. The use of rubber bladed wet floor tool attachment should increase the effectiveness of the cleaning.



Periodic maintenance

Best results can be achieved by the periodic use of a spray extraction carpet cleaning machine.

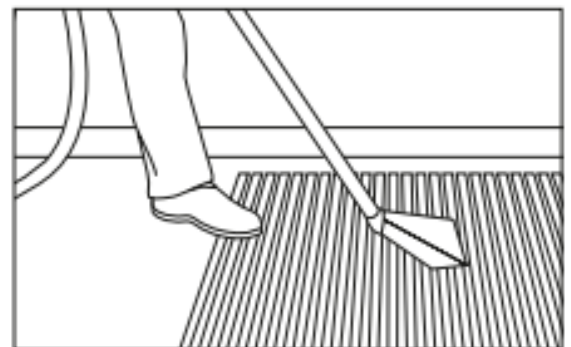
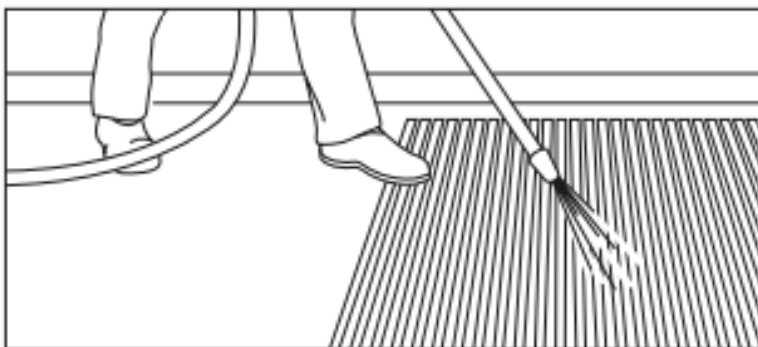
The use of a mild detergent (neutral pH) cleaning solution in the carpet cleaning machine should loosen ingrained soiling and aid the removal of oils and grease. More stubborn stains should be treated a solvent-based spot remover prior to re-cleaning with the detergent solution.

Chewing Gum can be removed by freeze spraying or with a proprietary chewing gum remover and then scraped or combed out of the matting carpet pile. This should be done before the full cleaning process is started.

Grime Trapper mats have replaceable Polypropylene studded design inserts (Textra)

Depending on the regularity of maintenance and the volume of foot traffic, the strips may require replacement at infrequent intervals.

Replacement Polypropylene studded design inserts (Textra) may be obtained from **Jaymart Rubber & Plastics Ltd.**



Grime Grabber Specification

Typical Specification

N10

General Fixtures/ Furnishings/ Equipment

300

Entrance Matting

40

Miscellaneous Fittings

Manufacturer

Jaymart Rubber & Plastics Ltd

Roman Way Crusader Park Warminster Wiltshire BA12 BSP

Tel: 01985 218997 Fax: 01985 217417

email : sales@jaymart.co.uk Web: www.jaymart.co.uk

Application

Internal and external High Traffic Areas **(Steps 1 & 2)**

DDA Compliant can be used in conjunction with wheelchairs and shopping trolleys.

Closed Construction Heel Safe

Aluminium Finishes Available

Standard Mill Finish & Anodised Finishes (Special Order)

Composition

Made from 100% Recycled Aluminium

Thickness/ Depth

17 mm

Weight

11.3 Kg per m²

Construction

Closed Interlocking Panel System

Pile Type

100% polypropylene heavy duty Brush inserts (REPLACEABLE INSERTS) - UV and rot resistant Ingenius

Warranty/ Guarantee

10 Year Subject to correct Maintenance and Cleaning procedures being carried out

Slip Rating

>PTV 36

Fixing

Grime Grabber can be surface mounted or in a recessed matwell

Recessed matwell sample

Matting Type	Recommended Frame Section (Y)	Finished Recess Depth (X) (Dependent on gauge of your choice of insert material)	Surface Mounted Ramping
Street Range Low Profile	32 x 32 x 5mm	16-20mm	Safe-T-Edge
Street Range Standard	32 x 32 x 5mm	20-22mm	Bevalu II
Buffer Zone Range	32 x 32 x 5mm	16-20mm	Safe-T-Edge
Alligator Range	32 x 32 x 5mm	14-20mm	Safe-T-Edge
Grime Range	25 x 25 x 5mm	11-17mm	Alu-Ramp
Grime Rail Firefighter	38 x 38 x 6mm (special section)	14-15mm	Safe-T-Edge

Ramped sample

Colours Available



Black (00)



Slate (77)



Granite (27)



Grey (71)



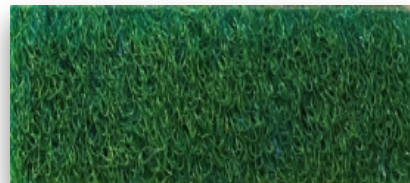
Navy Blue (36)



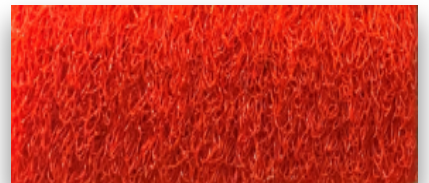
Bright Blue (34)



Brown (82)



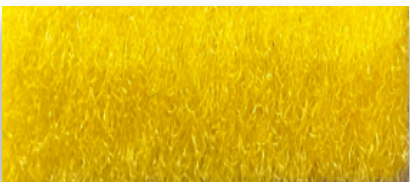
Bright Green (21)



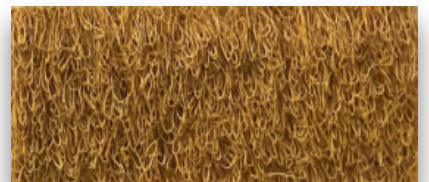
Bright Red (42)



Orange (99)



Yellow (98)



Tan (05)



Grime Grabber Ingenius Insert Specification

Ingenius Insert Specification

Manufacturing process

Needled pile floor covering ISO 2424

Surface Aspect

Dilour ISO 2424

Yarn Composition

100% Polypropylene

Backing

Latex ISO 2424

Pile Weight

1000g/m²

Total Weight

1900g/m² +/- 10% ISO 8543

Pile Height

4mm ISO 1766

Total Height

9mm + 15%/- 10% ISO 1765

Luxury Class

LC2 EN 1307

Colour fastness to light

> 5 ISO 105-B02

Colour fastness to rubbing, wet and dry

>4 ISO 105-X12

Colour fastness to water

>4 ISO 105-EO1

Colour fastness to soiling

>3 EN 1269

Dimensional Stability

Shrinkage < 1.2% ISO 2551

Extension < 5% ISO 2551

Electrostatic Charging

< 2KV ISO 6356

Slip Resistance

DS (>0,30) EN 13893

Flamability

Efl EN 13501 -1



Grime Grabber Cleaning & Maintenance

Cleaning and Maintenance Guide

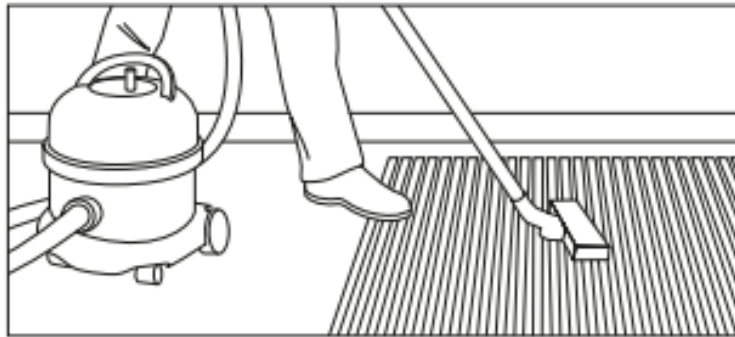
Grime Grabber entrance mats are designed to prevent the foot borne ingress of dirt and moisture into a building.

The aluminum ribs of the mat scrape dirt from shoe soles, whilst the heavy duty polypropylene brush inserts actively draw off dirt and moisture. The inserts are quick drying thus making a more effective entrance matting system.

Daily Cleaning

Regular maintenance is vital to ensure that **Grime Grabber** remains effective.

Normal daily soiling can be dealt with using a suction vacuum cleaner. A 2000-Watt model will give better results than a lower powered model. The use of rubber bladed wet floor tool attachment should increase the effectiveness of the cleaning.



Periodic maintenance

Best results can be achieved by the periodic use of a spray extraction carpet cleaning machine.

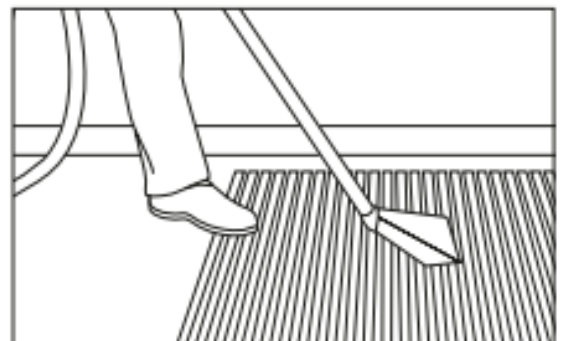
The use of a mild detergent (neutral pH) cleaning solution in the carpet cleaning machine should loosen ingrained soiling and aid the removal of oils and grease. More stubborn stains should be treated a solvent-based spot remover prior to re-cleaning with the detergent solution.

Chewing Gum can be removed by freeze spraying or with a proprietary chewing gum remover and then scraped or combed out of the matting carpet pile. This should be done before the full cleaning process is started.

Grime Grabber mats have replaceable heavy duty polypropylene brush inserts (Ingenius)

Depending on the regularity of maintenance and the volume of foot traffic, the strips may require replacement at infrequent intervals.

Replacement heavy duty polypropylene brush inserts (Ingenius) may be obtained from **Jaymart Rubber & Plastics Ltd.**





Jaymart

**Jaymart Rubber & Plastics
Limited**

**Roman Way, Crusader
Park,**

Warminster

BA12 8SP

Tel 01985 218994

Email: sales@jaymart.co.uk

www.jaymart.co.uk