



INTR.
SYSTEMS

ARCHITECTURAL GRILLES

INTRAgrille is a superb range of stainless steel, aluminium and carbon steel grilles by INTRAsystems, which provide a stunning architectural finish for both interior and exterior applications.

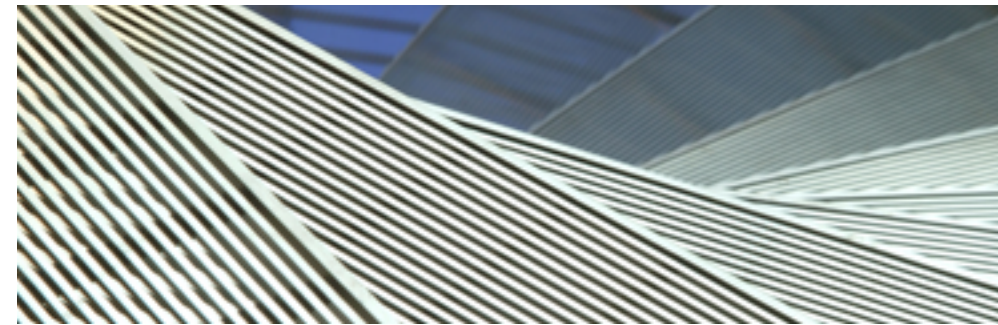
1.

Advanced production techniques ensure a precise slot and the highest parameters in terms of flatness and straightness to offer you a striking linear appearance for endless design solutions.

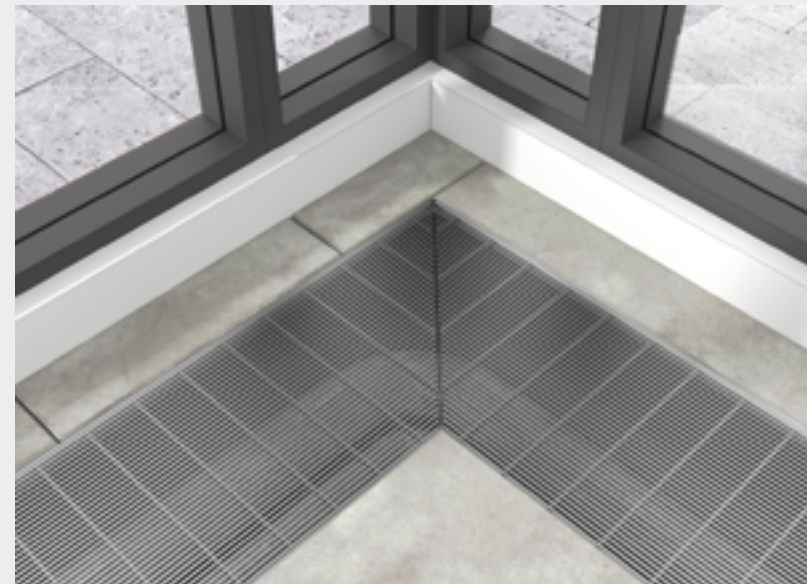
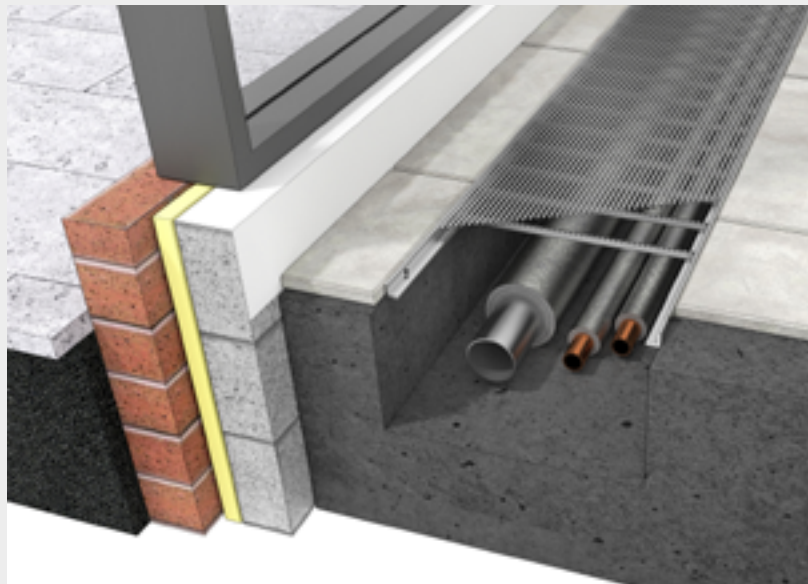


Trench heating covers
 Service trench covers
 Architectural features
 Entrance grille
 Ventilation

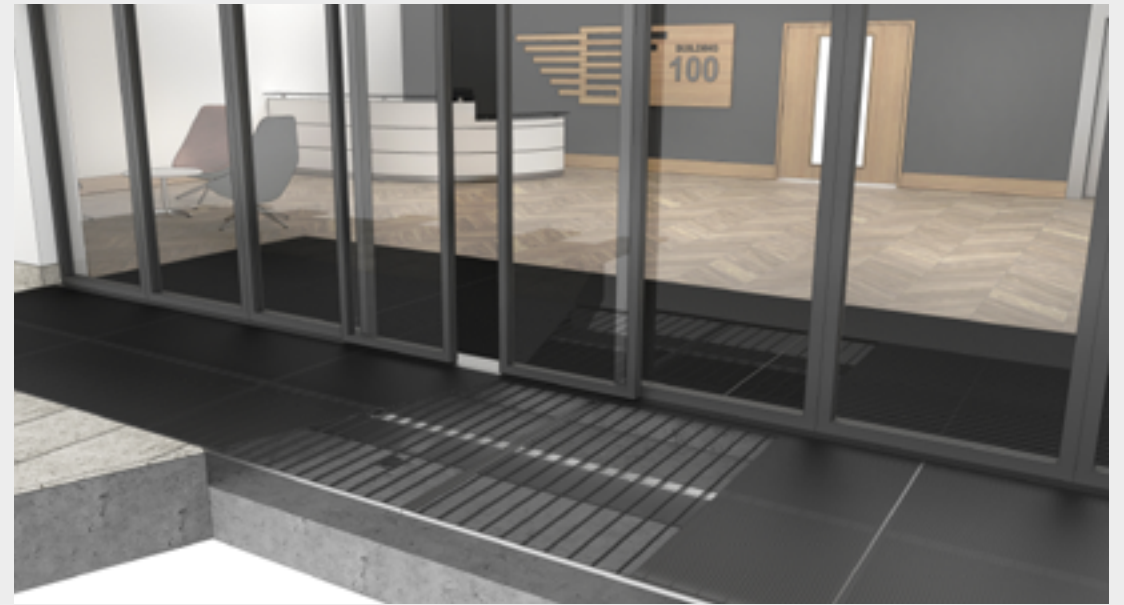
Drainage
 Walkways, platforms &
 staircases
 Facades & solar shading
 Balustrades & soffits
 Light wells



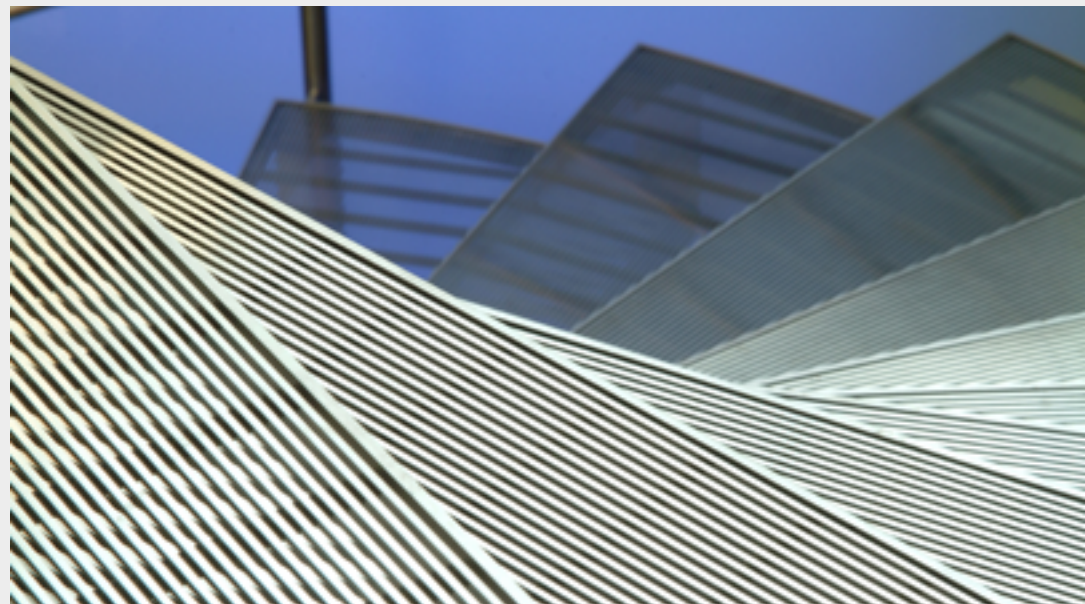
INTERNAL
APPLICATIONS



EXTERNAL APPLICATIONS



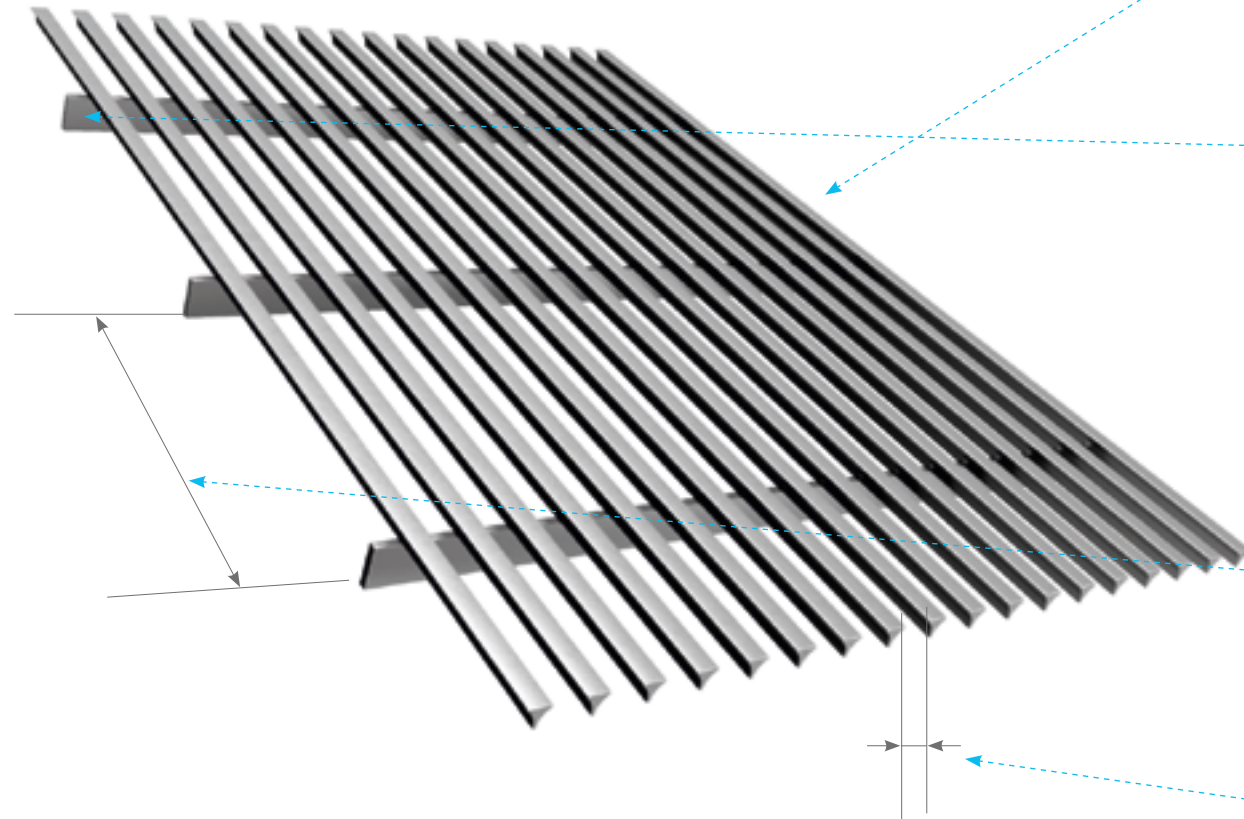
SPECIALIST
APPLICATIONS



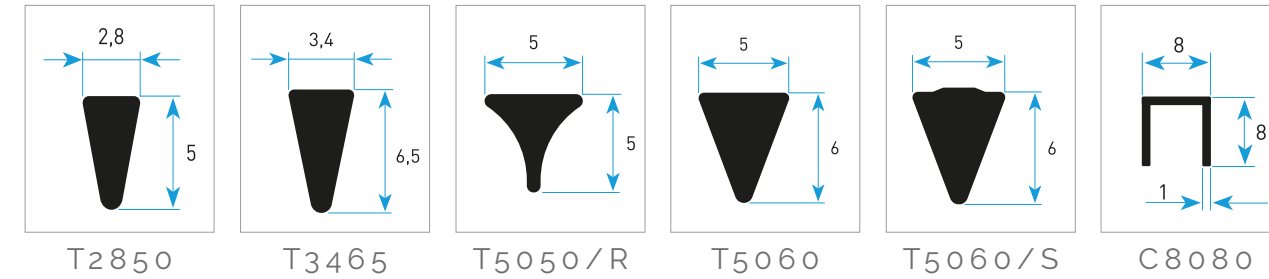
INTRAgrille Explained

INTRAgrille is available in a wide range of combinations, with a choice of materials and bespoke finishes to meet your exacting specifications.

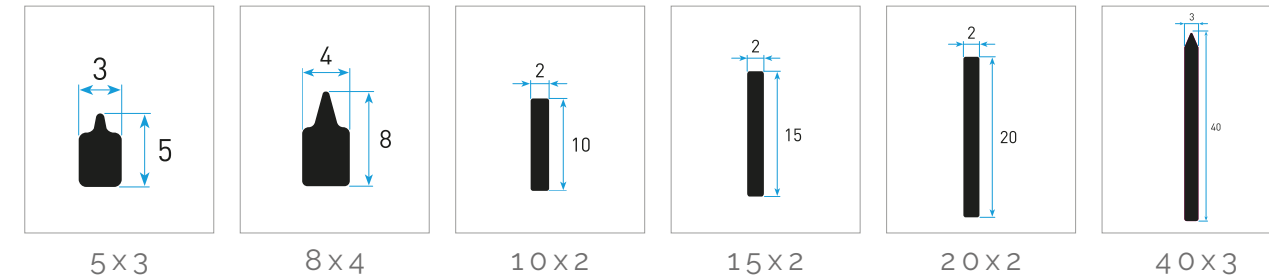
See pp 24-28 for further information.



PROFILE OPTIONS



SUPPORT PROFILE OPTIONS



SUPPORT PROFILE SPACING

This can be adjusted to achieve appropriate load bearing and aesthetic requirements.

SLOT SIZE

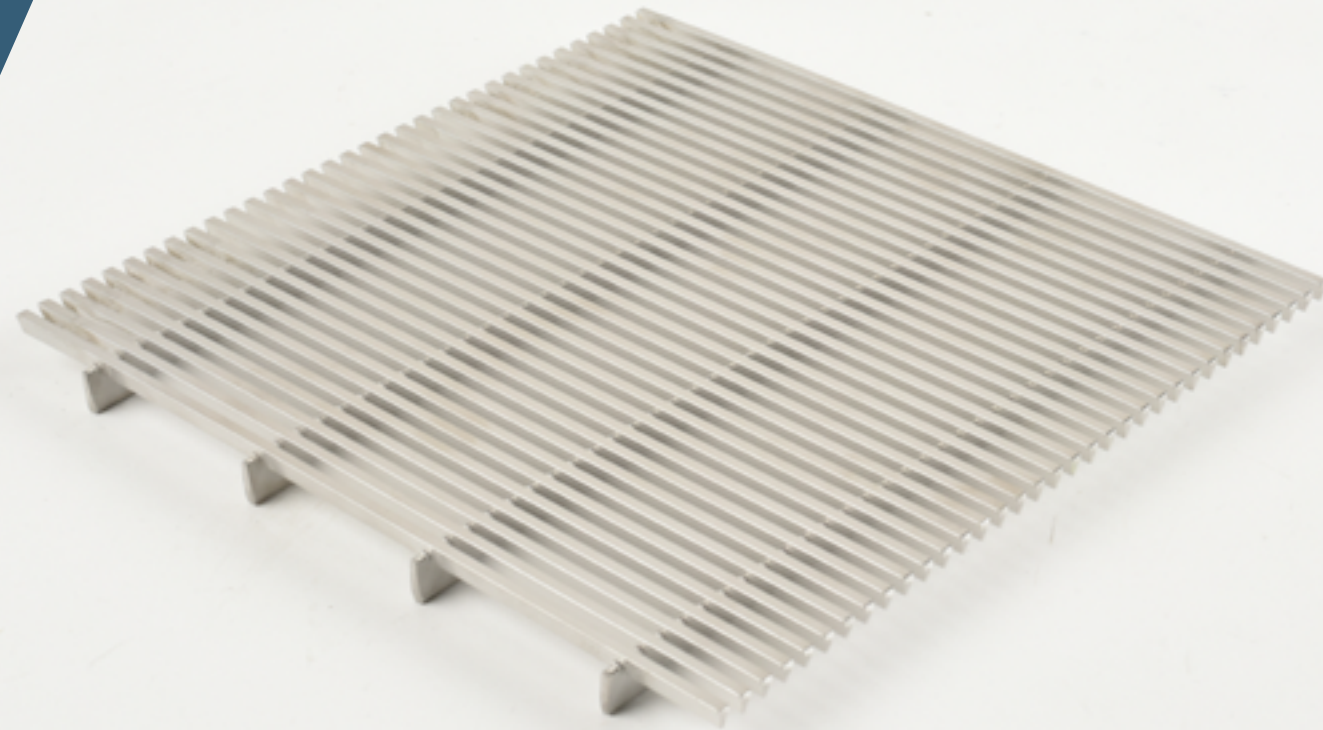
Can be varied within a single grid with options for constant, increasing or alternating spacing for different visual effects or to control the degree of screening and airflow. (See p27)

STANDARD PROFILE AND SUPPORT COMBINATIONS*

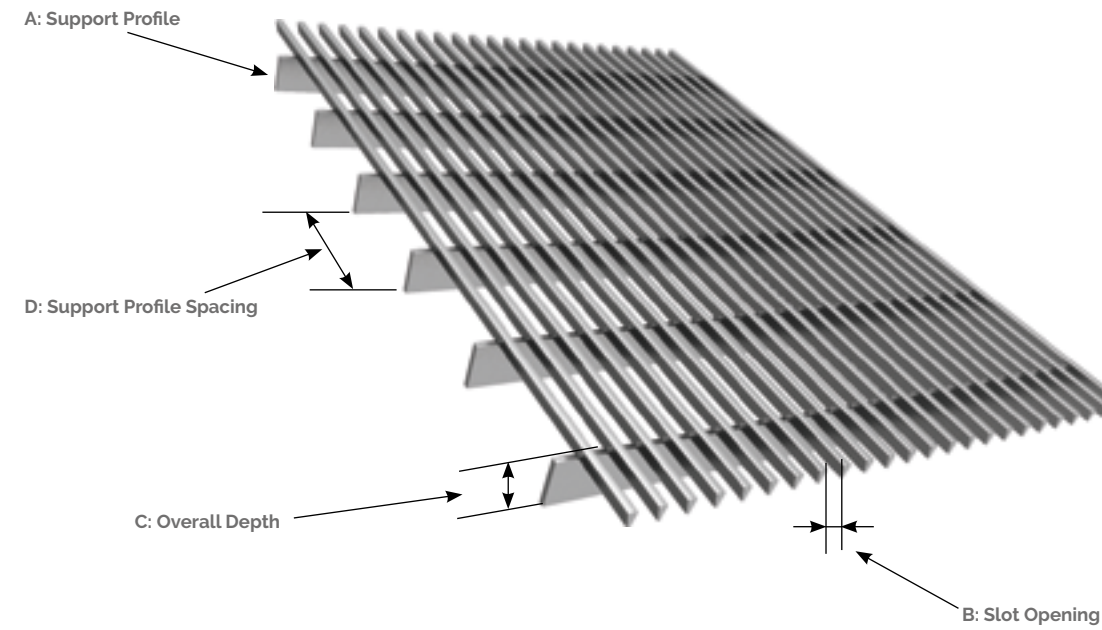
Support Profile	5 x 3	8 x 4	10 x 2	15 x 2	20 x 2	40 x 3
Profile T2850	✓	✓	✓	✓		
T3465			✓	✓	✓	✓
T5050/R			✓		✓	
T5060			✓	✓	✓	✓
T5060/S			✓		✓	✓
C8080				✓		

INTRAgrille T2850

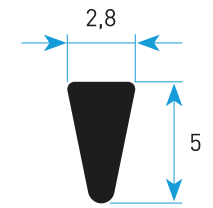
- Trench heating covers
- Service trench covers
- Architectural features
- Facades & solar shading
- Balustrades & soffits
- Entrance grilles
- Ventilation



Product shown: INTRAgrille T2850 10x2 stainless steel



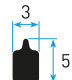
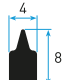
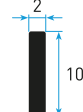
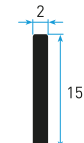
PROFILE T2850



unit of measurement: [mm]
scale: 2.5: 1

SPECIFICATIONS

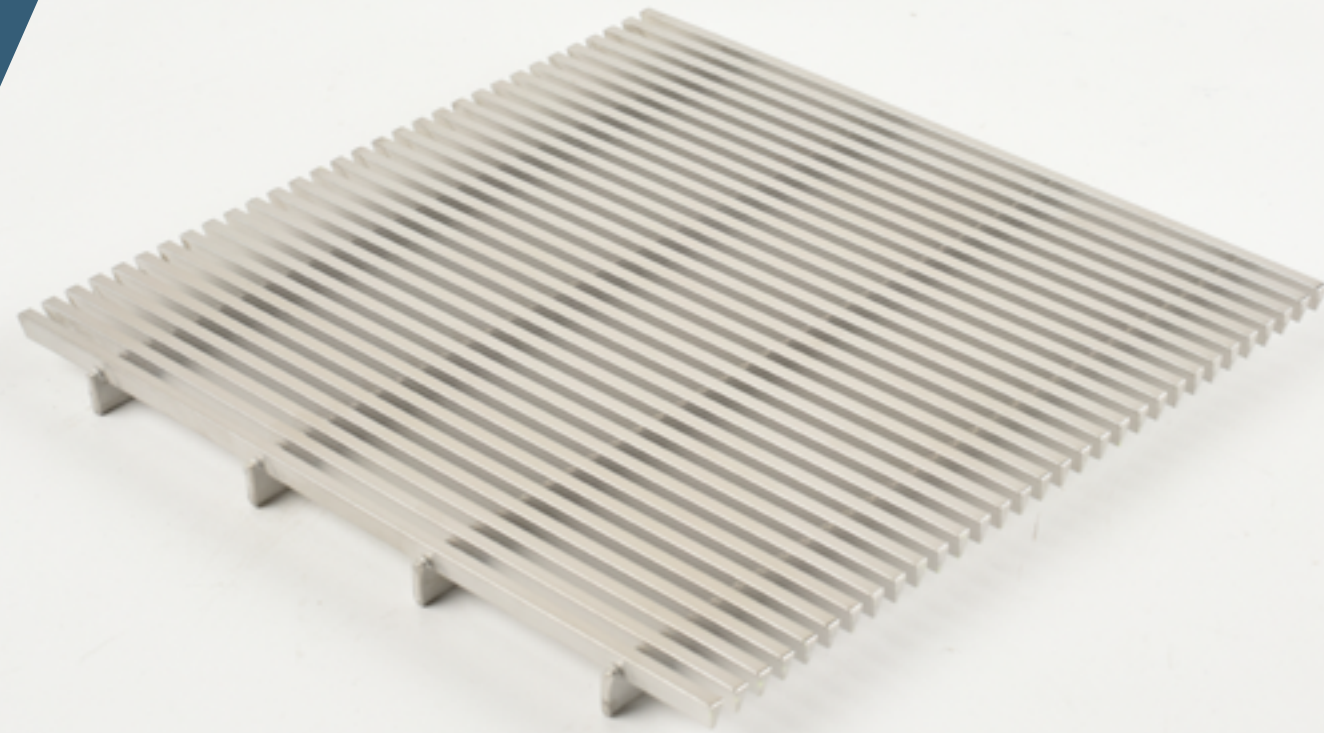
Product Reference:	INTRAgrille T2850
Support Profile:	5x3, 8x4, 10x2, 15x2
Support Profile spacing:	50mm (other options available)
Slot Opening:	>3mm constant, alternating or increasing (see pp26-27)
Open Area:	52% based on 3mm slot opening
Finish Options:	Pickled & Passivated, Electropolished, Powder Coated, Shot Peened

				
A Support Profile	5 x 3	8 x 4	10 x 2	15 x 2
Material	Stainless steel	Stainless steel	Stainless steel	Stainless steel
B Slot Opening	3mm	3mm	3mm	3mm
C Overall Depth	7.5mm	11.5mm	13.5mm	18.5mm
D Support Profile Spacing	50mm	50mm	50mm	50mm
Weight kg/m ² *	14.9	16.8	16.2	17.8
Typical max span**	n/a	n/a	300mm	500mm

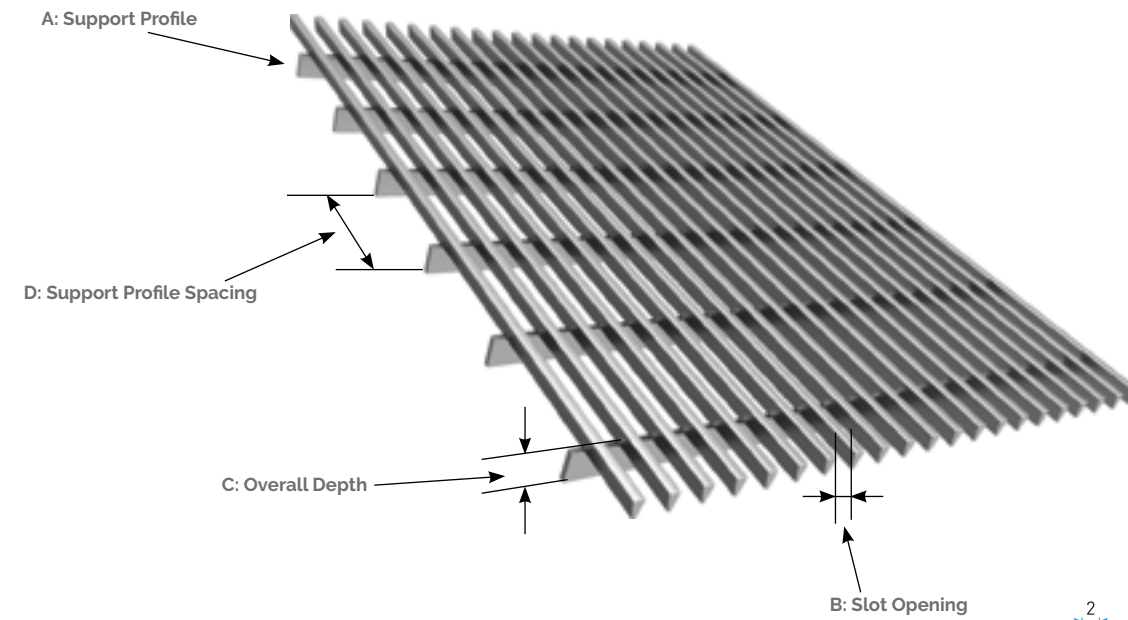
* Based on 3mm slot opening
** For heavy pedestrian traffic

INTRAgrille T3465

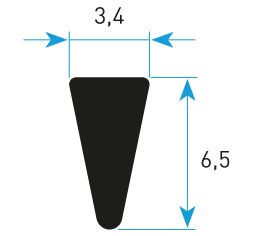
- Walkways, platforms & staircases
- Trench heating covers
- Service trench covers
- Architectural features
- Entrance grilles
- Light wells
- Ventilation
- Facades
- Drainage



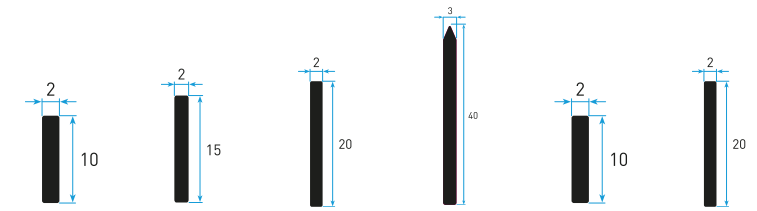
Product shown: INTRAgrille T3465 10x2 stainless steel



PROFILE T3465



unit of measurement: [mm]
scale: 2.5: 1



SPECIFICATIONS

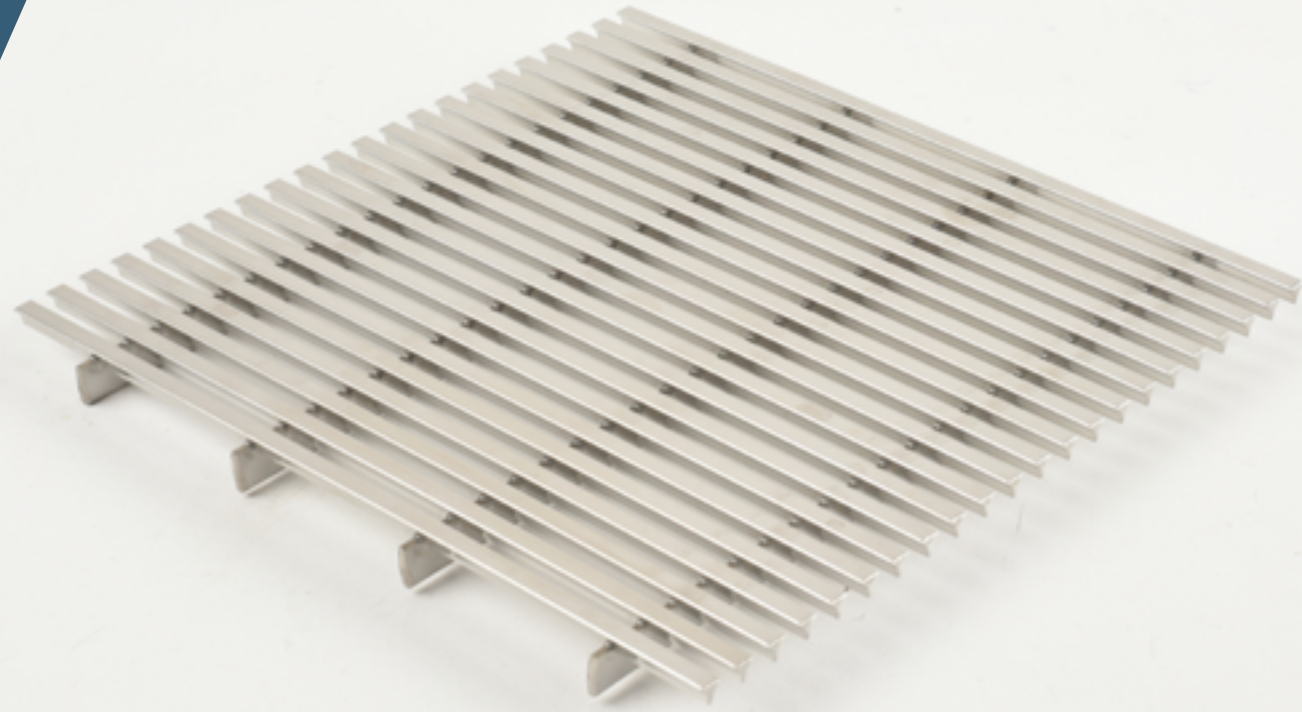
Product Reference:	INTRAgrille T3465
Support Profile:	10x2, 15x2, 20x2, 40x3
Support Profile spacing:	50mm (other options available)
Slot Opening:	>3mm constant, alternating or increasing (see pp26-27)
Open Area:	47% based on 3mm slot opening
Finish Options:	Pickled & Passivated, Electropolished, Powder Coated, Shot Peened - N/A to carbon steel

	10 x 2	15 x 2	20 x 2	40 x 3	10 x 2	20 x 2
A Support Profile	10 x 2	15 x 2	20 x 2	40 x 3	10 x 2	20 x 2
Material	Stainless steel	Stainless steel	Stainless steel	Stainless steel	Carbon steel	Carbon steel
B Slot Opening	3mm	3mm	3mm	3mm	3mm	3mm
C Overall Depth	15mm	20mm	25mm	45mm	15mm	25mm
D Support Profile Spacing	50mm	50mm	50mm	50mm	50mm	50mm
Weight kg/m ² *	21.3	22.9	24.2	37.3	21.0	24.0
Typical max span**	300mm	500mm	650mm	1500mm	300mm	650mm

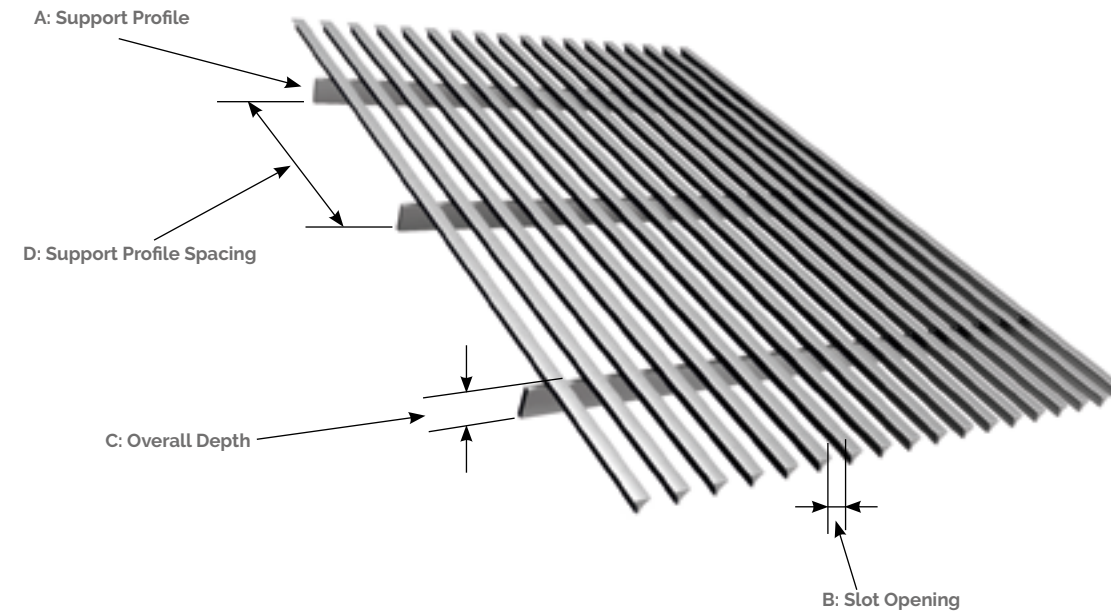
* Based on 3mm slot opening
** For heavy pedestrian traffic

INTRAgrille T5050/R

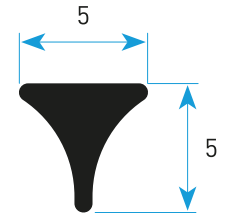
- Trench heating covers
- Service trench covers
- Architectural features
- Entrance grilles
- Ventilation
- Drainage



Product shown: INTRAgrille T5050/R 10x2 stainless steel



PROFILE T5050/R



unit of measurement: [mm]
scale: 2.5: 1

SPECIFICATIONS

Product Reference:	INTRAgrille T5050/R
Support Profile:	10x2, 20x2
Support Profile spacing:	50mm (other options available)
Slot Opening:	>4mm constant, alternating or increasing (see pp26-27)
Open Area:	44% based on 4mm slot opening
Finish Options:	Pickled & Passivated, Electropolished, Powder Coated, Shot Peened - N/A to carbon steel

	10 x 2	10 x 2	20 x 2
A Support Profile	10 x 2	10 x 2	20 x 2
Material	Stainless steel	Carbon steel	Carbon steel
B Slot Opening	4mm	4mm	4mm
C Overall Depth	13.5mm	13.5mm	23.5mm
D Support Profile Spacing	50mm	50mm	50mm
Weight kg/m ² *	14.0	13.8	16.9
Typical max span**	300mm	300mm	650mm

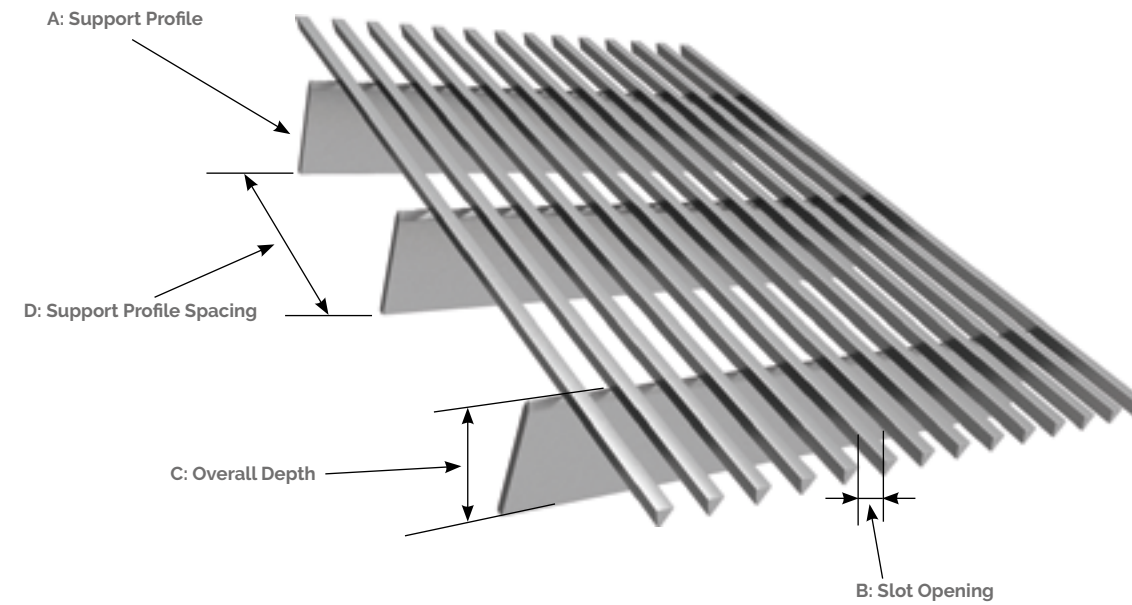
* Based on 4mm slot opening
** For heavy pedestrian traffic

INTRAgrille T5060

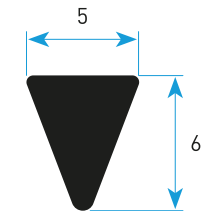
- Walkways, platforms & staircases
- Architectural features
- Trench heating covers
- Service trench covers
- Entrance grilles
- Ventilation
- Light wells
- Drainage



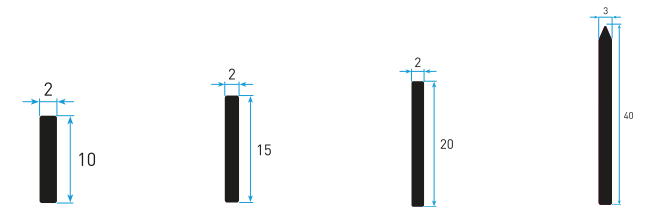
Product shown: INTRAgrille T5060 10x2 stainless steel



PROFILE T5060



unit of measurement: [mm]
scale: 2.5: 1



SPECIFICATIONS

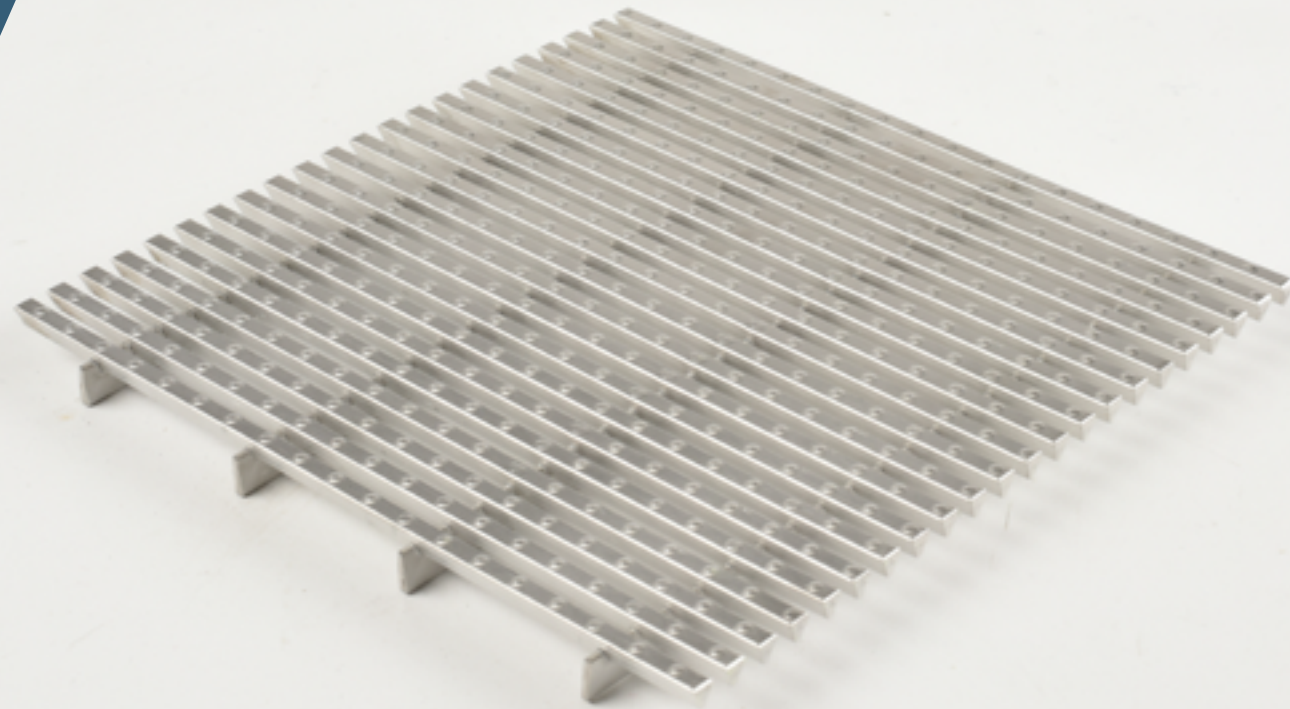
Product Reference:	INTRAgrille T5060
Support Profile:	10x2, 15x2, 20x2, 40x3
Support Profile spacing:	50mm (other options available)
Slot Opening:	>4mm constant, alternating or increasing (see pp26-27)
Open Area:	44% based on 4mm slot opening
Finish Options:	Pickled & Passivated, Electropolished, Powder Coated, Shot Peened

A	Support Profile	10 x 2	15 x 2	20 x 2	40 x 3
	Material	Stainless steel	Stainless steel	Stainless steel	Stainless steel
B	Slot Opening	4mm	4mm	4mm	4mm
C	Overall Depth	14.5mm	19.5mm	24.5mm	44.5mm
D	Support Profile Spacing	50mm	50mm	50mm	50mm
	Weight kg/m ² *	19.0	20.6	22.2	35.0
	Typical max span**	300mm	500mm	650mm	1500mm

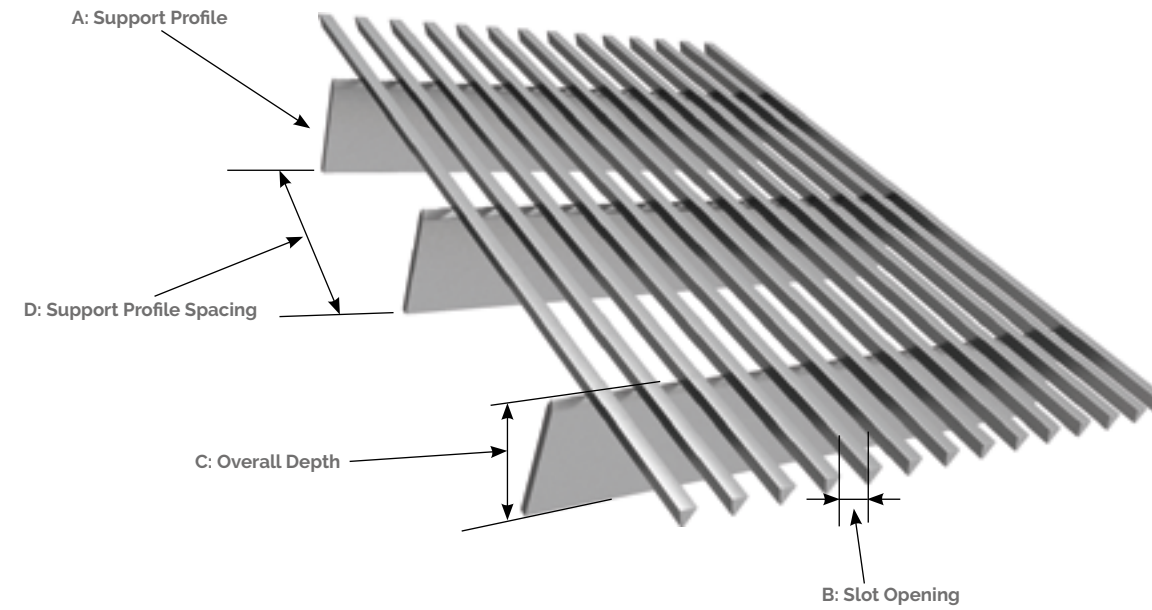
* Based on 4mm slot opening
** For heavy pedestrian traffic

INTRAgrille T5060/S

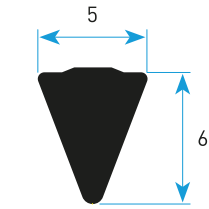
- Walkways, platforms & staircases
- Architectural features
- Trench heating covers
- Service trench covers
- Entrance grilles
- Ventilation
- Light wells
- Drainage



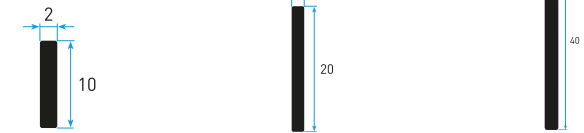
Product shown: INTRAgrille T5060/S 10x2 stainless steel



PROFILE T5060/S



unit of measurement: [mm]
scale: 2.5: 1



SPECIFICATIONS

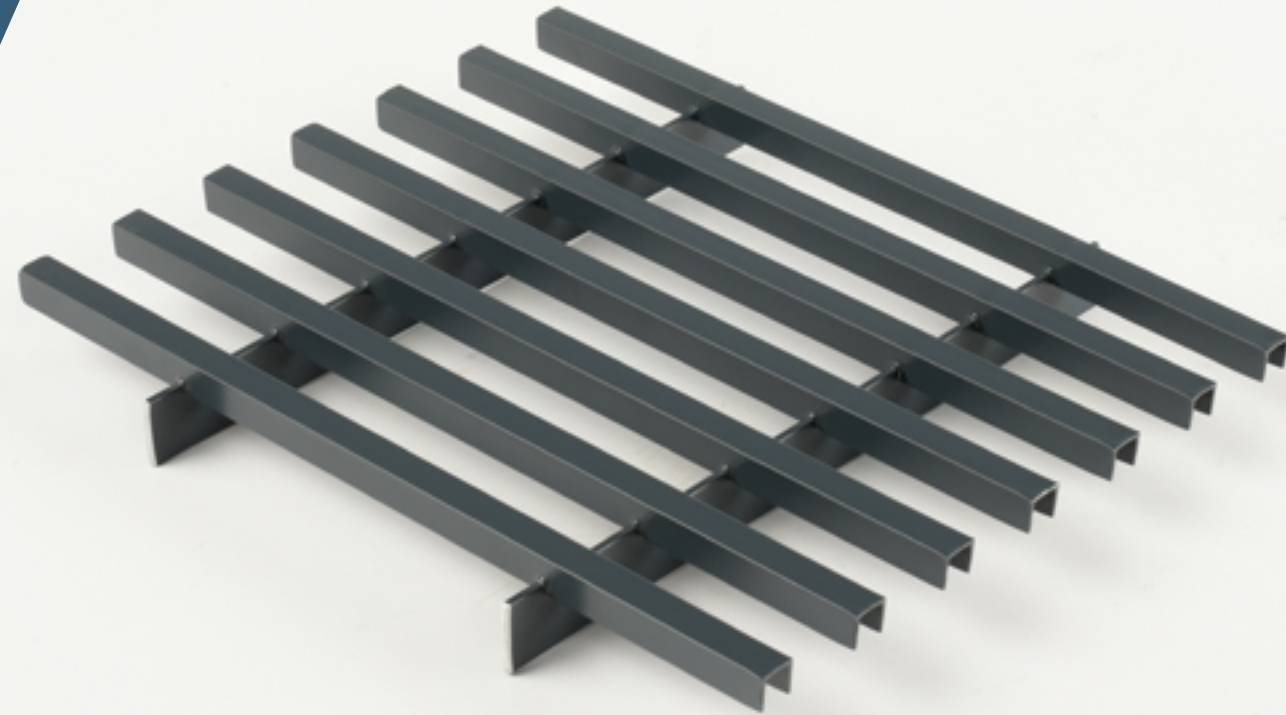
Product Reference:	INTRAgrille T5060/S
Support Profile:	10x2, 20x2, 40x3
Support Profile spacing:	50-100mm (other options available)
Slot Opening:	>4mm constant, alternating or increasing (see pp26-27)
Open Area:	44% based on 4mm slot opening & profile spacing
Finish Options:	Pickled & Passivated, Electropolished, Powder Coated, Shot Peened

	10 x 2	20 x 2	40 x 3
A Support Profile	10 x 2	20 x 2	40 x 3
Material	Stainless steel	Stainless steel	Stainless steel
B Slot Opening	4mm	4mm	4mm
C Overall Depth	14.5 + 0.3mm	24.5 + 0.3mm	44.5 + 0.3mm
D Support Profile Spacing	50mm	100mm	50mm
Weight kg/m ² *	19.0	22.2	35.0
Typical max span**	300mm	650mm	1500mm

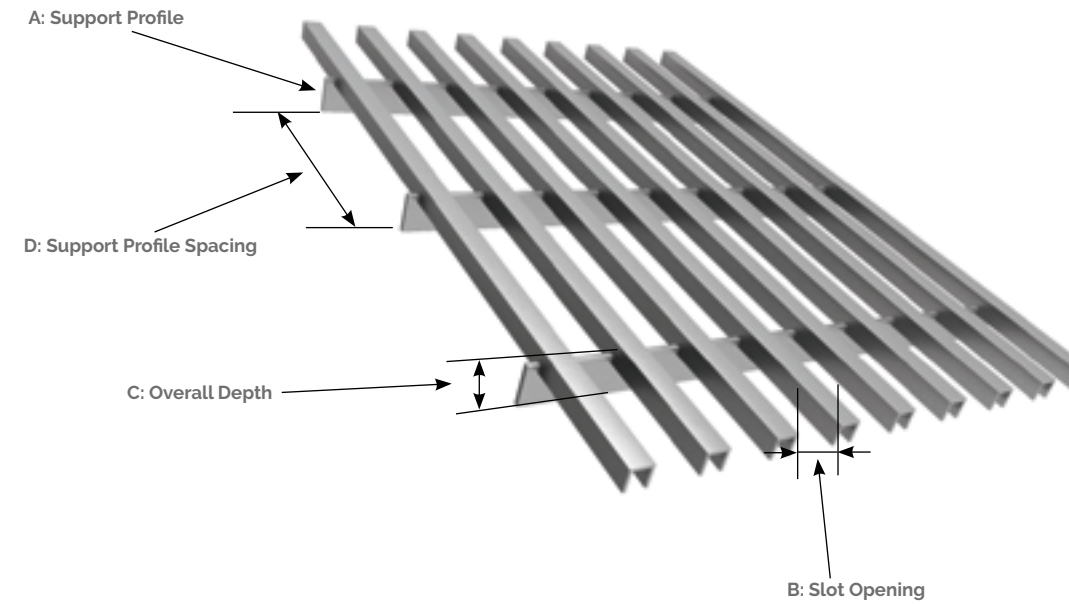
* Based on 4mm slot opening
** For heavy pedestrian traffic

INTRAgrille C8080

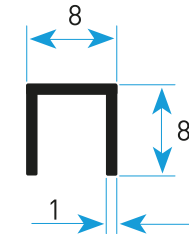
- Architectural features
- Balustrades & soffits
- Facades



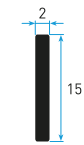
Product shown: INTRAgrille C8080 15x2 Powder coated aluminium



PROFILE C8080



unit of measurement: [mm]
scale: 2.5: 1



SPECIFICATIONS

Product Reference:	INTRAgrille C8080
Support Profile:	15x2
Support Profile spacing:	150mm (other options available)
Slot Opening:	>17mm constant, alternating or increasing (see pp26-27)
Open Area:	44% based on 17mm slot opening
Finish Options:	Powder Coated

A	Support Profile	15 x 2
	Material	Aluminium
B	Slot Opening	17mm
C	Overall Depth	20mm
D	Support Profile Spacing	150mm
	Weight kg/m ² *	2.95
	Typical max span	n/a

* Based on 17mm slot opening

FINISHES



Pickling & Passivation

Pickling - the most efficient and economical way to clean stainless steel surfaces of residuals that can lead to corrosion. Pickling improves the appearance of the surface: smoothing out scratches and sharp edges and removing stains from welding and cutting points.

24. Passivation - creates a thin oxide layer on the surface to increase resistance to chemical agents and passivity to weather conditions.



Electropolishing

Electropolishing is used to smooth and polish the surface of stainless steel and provide additional protection against corrosion. The process improves the aesthetic appearance and makes the finished product easier to keep clean.



Powder Coating

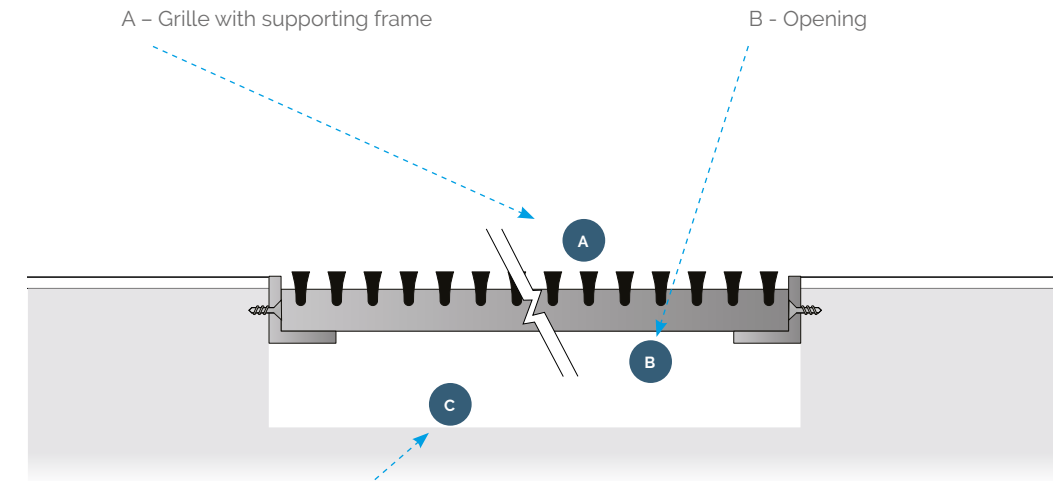
Powder coating is the process of applying particles of powder paint to the surface of carbon steel to provide a coating that is resistant to corrosion, chemicals, heat and mechanical damage. Coatings can be made in **any RAL colour**. Special paint finishes are also available including certified antibacterial and abrasion resistant.



Shot Peening

Shot Peening involves bombarding the surface of stainless steel with steel or glass balls to achieve different degrees of slip resistance.

FIXINGS

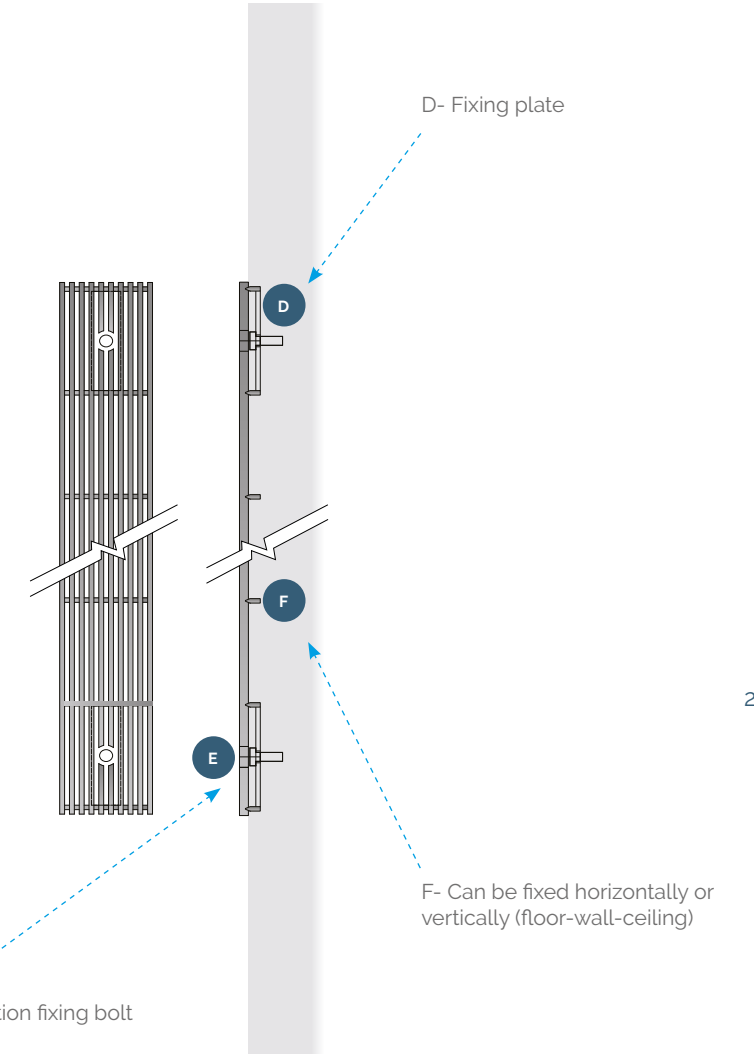


A - Grille with supporting frame

B - Opening

C - Service trench / matwell / lighting void

Hinged, framed and bespoke fixings available.

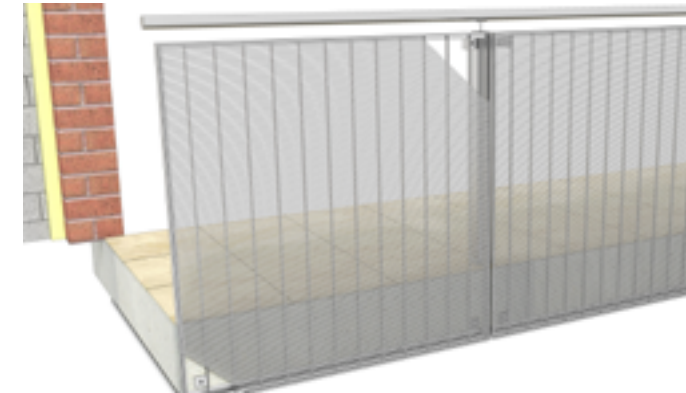


D- Fixing plate

E- Location fixing bolt

F- Can be fixed horizontally or vertically (floor-wall-ceiling)

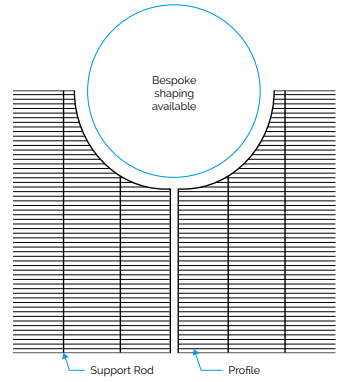
25.



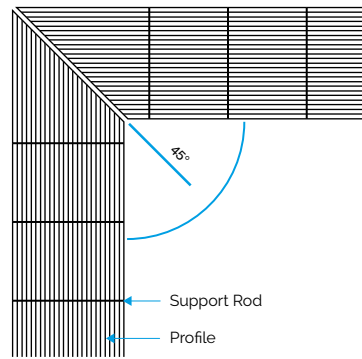
CONFIGURATION OPTIONS

Grilles can be made to nearly any shape and format to suit your projects.

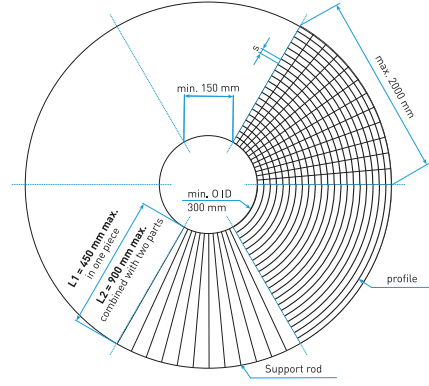
Shaping



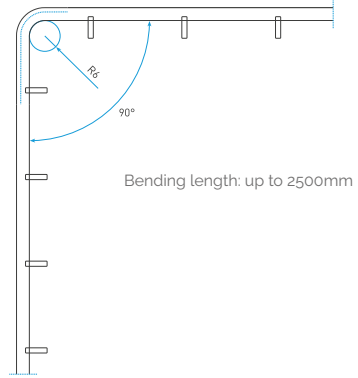
Corner Grilles



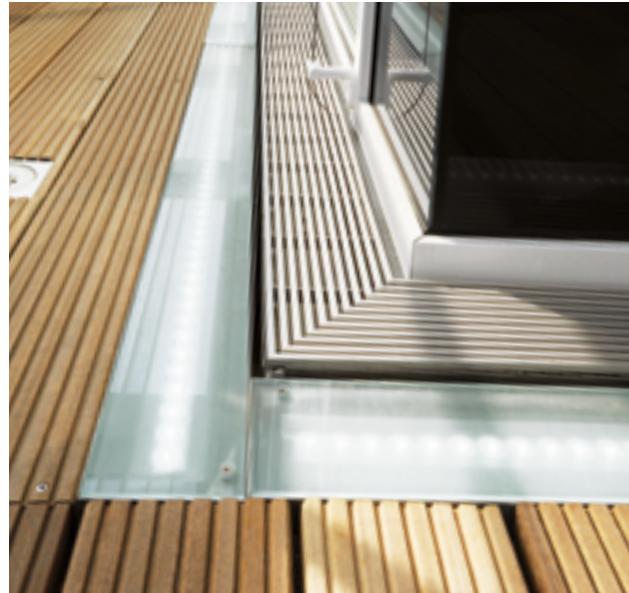
Radial Grids



Bending in the vertical plane



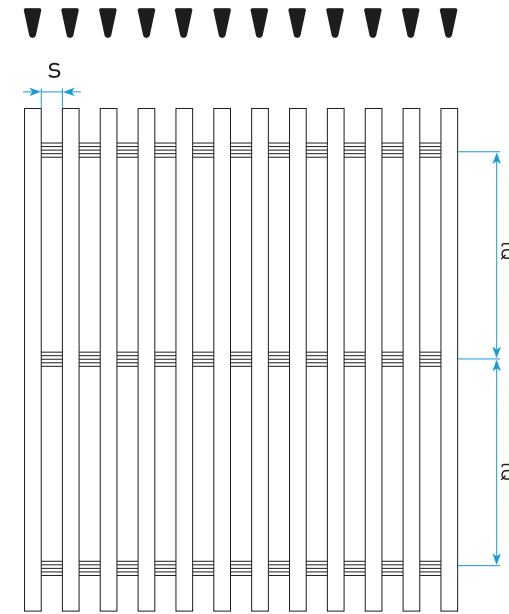
26.



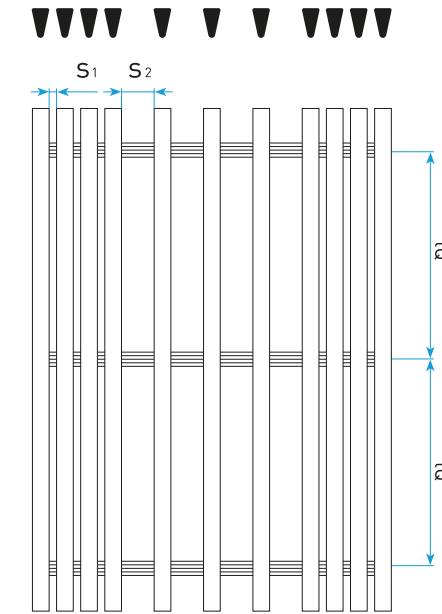
SLOT OPENING

Slot size can be varied within a single grid with options for constant, increasing or alternating spacing to control the degree of screening and airflow

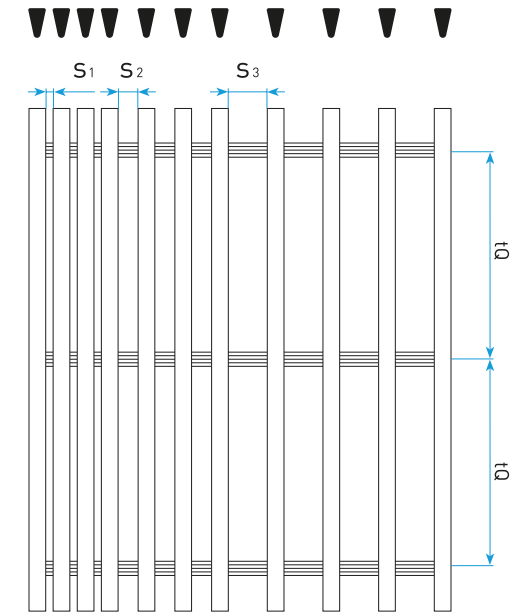
Profile configuration with constant slot opening



Profile configuration with alternating bigger and smaller slots



Profile configuration with increasing slot opening



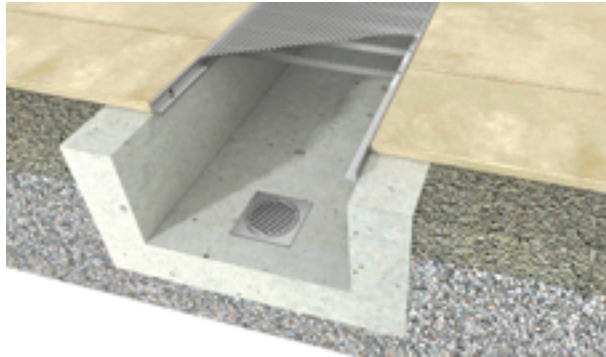
S = Slot spacing
tQ = Variable support profile spacing

27.

DRAINAGE OPTIONS

Please contact us to specify details such as overall length, width, outlet type and location.

- Options available to suit a wide variety of applications
- Adjustable feet to suit drainage falls
- Suitable for internal and external applications



28.



