



System 100

LIQUID WATERPROOFING MEMBRANES

System 200

HIGH BUILD CEMENT MORTARS

System 300

WATERBARS, WATERSTOPS AND WATERPLUGS

System 400

EXTERNAL WATERPROOFING AND DRAINAGE MEMBRANES

System 500

CAVITY DRAIN WATERPROOFING

System 600

SHEET FLOORING MEMBRANES

System 700

COATINGS

System 800

DAMP PROOFING

System 900

PRIMERS, PREPARATION AND REINFORCEMENT

PUMPS, PUMPING SYSTEMS AND ANCILLARIES

PRODUCT — DIRECTORY —



+44 (0)1732 360 095



info@newtonwaterproofing.co.uk

tech@newtonwaterproofing.co.uk



www.newtonwaterproofing.co.uk

JN **NEWTON**
WATERPROOFING



*Newtonite Lathe being exhibited at the Daily Mail
Ideal Home Exhibition in 1950*

THE NEWTON STORY

Newton Waterproofing Systems, a trading name of John Newton & Company, Est. 1848, is the UK's leading independent supplier of structural waterproofing systems, damp proofing, water control and drainage products.

Mr. John Newton established the company in 1848 at Verney Road in South London. Their first unique ventilated waterproof membrane was introduced in 1937 and over five million metres of Newtonite were sold until its replacement with polyethylene products in 1984.

We are a family run business, with a proven history in manufacturing quality damp and waterproofing materials, together with an exceptional technical advice and support service.

Newton are committed to quality, the environment and health and safety and operate to the internationally recognised ISO standards - ISO 9001:2008, ISO 14001:2004 and BS OHSAS 18001:2007.

THE TOTAL SOLUTION FOR PROTECTING BUILDINGS

Newton Waterproofing Systems offer leading solutions for waterproofing and damp proofing applications, for both commercial and residential new-build, and refurbishment projects.

The extensive range of Newton products, solutions and systems meet all potential structural waterproofing and damp proofing requirements, from new-build structures and basement redevelopments, to tunnels, roofs, decks and damp proofing.

Newton's portfolio covers an extensive range of commercial and residential projects, including some of the UK's largest new housing developments, to the refurbishment and protection of some of our most prized heritage structures, and the waterproofing of thousands of new-build and existing basements into habitable spaces.

Newton structural waterproofing and damp proofing products offer the highest level of protection. Our technical staff and our network of Newton Specialist Basement Contractors (NSBCs) can assist in all aspects of installation and design.

Please be aware that the product overviews show typical application rates. In most instances these will be the recommended rates, however they may alter with some products requiring more or less to be applied dependent on their intended use.



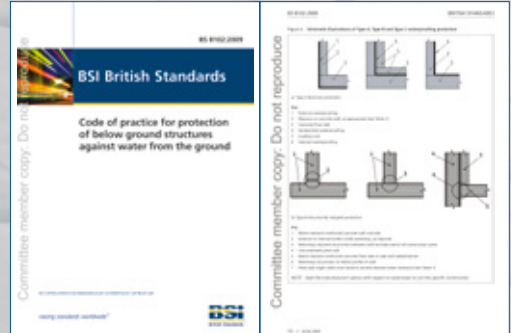
Note: Please check individual product sheets for advice on appropriate fixings and ancillary products. Contact our Technical department for further information on 01732 360 095. Copies of our BBA Certificates, brochures and data sheets can be downloaded from newtonwaterproofing.co.uk, please always refer to our website for the latest versions. The technical information within this document is provided as a quick reference. Please read the technical data sheet in all cases and for all technical information. Products and their specifications can be changed or modified without prior notice and Newton Waterproofing Systems reserve the right to update product literature at any time. All copy, diagrams, images, Newton trade names/logos, and designs used in this directory remain the intellectual property of Newton Waterproofing Systems and may not be reproduced without the written permission of the Directors of Newton Waterproofing Systems. Any party who exploits this property may be subject to prosecution. Newton Waterproofing Systems is a trading name of John Newton & Company Ltd.

BS 8102:2009 REQUIREMENTS FOR WATERPROOFING

BS 8102:2009 is the British Standard for waterproofing below ground structures. It explains the various types of waterproofing available and advises on the correct specification of those systems.

The Standard recognises that for any below ground project to be successful, strategies should be put in place for dealing with groundwater, soil gases and contaminants - and that these are considered from the very earliest stages of the planning and design processes.

BS 8102:2009 also recommends that a Waterproofing Design Specialist be involved from the outset of the project. Our network of registered Newton Specialist Basement Contractors (NSBCs) can fulfil this role and can assist in all aspects of installation and design. They can offer insured guarantees for the installation and the vast majority of NSBCs can also offer full Professional Indemnity on waterproofing design and installation, giving peace of mind to all parties concerned.



TRAINING AND TECHNICAL SUPPORT

We pride ourselves on our technical support and have a team of dedicated staff to deal with enquiries, amend technical drawings and help design the best waterproofing solution for your project. Our library of technical drawings can be downloaded in CAD and PDF via our website, and we have an expanding library of BIM objects.

In addition, Newton hold regular training sessions at our head office in Tonbridge, incorporating:

- ✓ Internal Waterproofing
- ✓ Deck Waterproofing
- ✓ External Waterproofing
- ✓ Pumps & Pumping Ancillaries

Please contact us for bookings and availability.

“*Newton Waterproofing Systems provide training and backup where needed, which ensures the product is installed correctly, and makes certain that the final structure is fully waterproof.*”

Paul Dennison, Buxted Construction



RIBA APPROVED CPD

Newton technical experts frequently deliver our double-points RIBA Approved CPD on Waterproofing Design Strategies to BS 8102:2009 'Code of Practice for the Protection of Below Ground Structures Against Water from the Ground'. The CPD can be presented at your office, viewed at one of the RIBA CPD Roadshows or watched online via the Members Area on our website.

Newton Waterproofing Systems are the first in our industry to offer a RIBA Approved factory tour. The tour offers specifiers a practical demonstration of the installation of Type A, B and C structural waterproofing systems, as well as educating designers on their obligations when specifying below-ground waterproofing in accordance with BS 8102:2009.



“ On behalf of The British Board of Agrément I would like to thank you for the quality of your CPD training provided to a number of technical Project Managers and other staff members. ”

Mike Wiseman Phd, British Board of Agrément

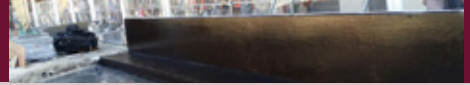
“ Thank you both so much for hosting us yesterday and for your hospitality, we had a great time and the students found the visit very useful. We are very lucky indeed to be able to work with companies such as yourselves so thank you again and I hope there will be more collaboration between us in the future. ”

Sarah Radif, Southampton Solent University

“ On behalf of Jackson Design Associates, I would like to take this opportunity to thank you for providing us with a professional and knowledgeable CPD seminar on Basement Waterproofing at our offices. We were very impressed by the quality of the presentation and it has undoubtedly improved our knowledge of the BS 8102 and associated types of basement waterproofing strategies. ”

Matt Rowbottom, Jackson Design Associates

SYSTEM 100 | LIQUID WATERPROOFING MEMBRANES



NEWTON 101F Cementitious flexible waterproofing membrane.....	8
NEWTON 102 NUSEAL-LM Damp proofing and gas control liquid membrane.....	8
NEWTON 103-S Durable liquid waterproofing membrane	9
NEWTON 104 Crystalline waterproofing of concrete.....	9
NEWTON 105-S Multi-use cementitious mortar	9
NEWTON 106 FLEXPPOOF Highly advanced single-component liquid waterproofing.....	10
NEWTON 107F Sprayable cementitious waterproofing membrane.....	10
NEWTON 108 HYDROBOND-LM Sprayed instant-set rubber waterproofing membrane.....	10
NEWTON 109-LM Flexible rubber waterproofing membrane.....	11
NEWTON 110 WATSTOP Epoxy-cement waterproofing and surface repair.....	11
NEWTON 111 ACRIFLEX ONE Fast-curing, UV-stable and trafficable waterproofing paste.....	11
NEWTON 112 AQUABIT Seamless waterproofing paste for retaining walls.....	12
NEWTON 114 ACRIFLEX Fibre-reinforced liquid waterproofing membrane.....	12
NEWTON 117 ACRIFLEX RAPIDO Fast-curing liquid waterproofing membrane for decks and balconies.....	12

ANCILLARIES

NEWTON 912-RT Non-woven reinforcement tape for liquid waterproofing membranes.....	12
NEWTON 914-RT Non-woven reinforcement tape for Newton 108 HydroBond-LM & 109-LM.....	12

COLLOMIX MIXING EQUIPMENT

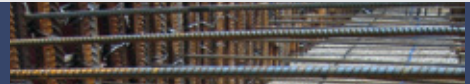
COLLOMIX Xo55 DUO Dual forced action mixer for Newton liquid waterproofing membranes.....	13
COLLOMIX Xo1 High performance, variable speed mixer.....	13
COLLOMIX MIXING PADDLES For use with Collomix Xo1.....	13
RMX MIXING STAND Pneumatic mixing aid.....	14
MIXER CLEANING BUCKET Cleaning system for stirrers.....	14
MORTAR BUCKETS High quality polyethylene buckets.....	14
TRANSPORT CARTS Engineered transport system for mortar buckets.....	14

SYSTEM 200 | HIGH BUILD CEMENT MORTARS



NEWTON 203-RM Rapid-set & high strength repair mortar.....	15
NEWTON 260-LC Cementitious epoxy levelling compound.....	15

SYSTEM 300 | WATERBARS, WATERSTOPS AND WATERPLUGS



NEWTON 301 EASYPROOF Metal construction joint waterbar.....	16
NEWTON 303 POLYPROOF Polymer swelling waterbar.....	16
NEWTON 306 SWELLMASTIC Swelling adhesive mastic.....	17
NEWTON 307 PIPESEAL EPDM pipe waterbar.....	17
NEWTON 308 STOPAQ Service duct waterproofing.....	17
NEWTON 309-M Adhesive mastic.....	18
NEWTON 312 BENTOPROOF Bentonite swelling waterbar.....	18
NEWTON 313-WP WATERPLUG Fast-setting cement/polymer waterplug.....	18
NEWTON 314-BP BENTONITE POWDER Swelling bentonite detailing powder.....	19

ANCILLARIES

NEWTON FIXING MESH Steel fixing mesh for swelling waterbars.....	19
--	----



SYSTEM 400 | EXTERNAL WATERPROOFING AND DRAINAGE MEMBRANES



NEWTON 403 HYDROBOND | Externally applied waterproofing membrane20

NEWTON 407 DECKDRAIN | Drainage membrane for decks and flat roofs.....20

NEWTON 408 DECKDRAIN | Drainage membrane for decks and flat roofs.....21

NEWTON 409 ROOTBARRIER | Puncture-resistant root barrier membrane.....21

NEWTON 410 GEODRAIN | Externally applied drainage membrane for basements.....21

NEWTON 420 RESERVOIR | Extensive green roof drainage membrane.....22

ANCILLARIES

NEWTON MULTIPLUG | Fixing plugs for Newton membranes in poorer substrates.....22

NEWTON GEOPROFILE | Capping profile for Newton 410 GeoDrain22

NEWTON WATERSEAL TAPE | For forming a seal at overlapping membranes22

NEWTON 904-RT | Adhesive reinforcement tape for external corners of Newton 410 GeoDrain23

NEWTON HYDROBOND TAPE | Double-sided high strength adhesive tape for sealing lap joints23

NEWTON SOFT WASHER FIXINGS | Fixing washers for use with 403 HydroBond23

NEWTON SPIT GUN | Gas driven fixing gun.....23

NEWTON HYDROBOND FIXING SET | Ballistic nail and washer sets for the Newton Spit Gun23

SYSTEM 500 | CAVITY DRAIN WATERPROOFING



NEWTON PAC-500 | Positive air curtain system.....24

NEWTON 503 | 3mm cavity drain membrane.....24

NEWTON 503 MESH | 3mm meshed cavity drain membrane.....24

NEWTON 508 | 8mm cavity drain membrane.....25

NEWTON 508 ECO FLOOR | 8mm cavity drain floor membrane.....25

NEWTON 508 MESH | 8mm meshed cavity drain membrane.....25

NEWTON 520 | 20mm cavity drain membrane26

NEWTON TITAN-PRO WHITE | Pumping system for Newton System 50026

NEWTON BASEDRAIN | Drainage system.....26

NEWTON FIBRAN XPS 500-C | Closed-cell slotted insulation board.....27

NEWTON BASEBOARD | Drainage conduit.....27

ANCILLARIES

NEWTON MULTIPLUG | Fixing plugs for Newton membranes in poorer substrates.....28

NEWTON NUSEAL PLUGS | For securing Newton System 500 membranes to substrate28

NEWTON WATERSEAL TAPE | For forming a seal to flanged overlaps.....28

NEWTON WATERSEAL ROPE | For forming a seal at studded overlaps.....28

NEWTON OVERTAPE | For sealing adjacent butted and overlapped membranes.....29

NEWTON MESH TAPE | Self-adhesive sealing tape for Newton meshed membranes.....29

NEWTON CONDENSATION STRIP | For creating a condensation gap.....29

NEWTON INSULATION FIXINGS | Fixing plugs for insulation.....29

SYSTEM 600 | SHEET FLOORING MEMBRANES



NEWTON 601 SLIMLINE High-grade flooring membrane.....	30
NEWTON 603 High-grade flooring membrane.....	30
ANCILLARIES	
NEWTON WATERSEAL TAPE For forming a seal at overlapping membranes	31
NEWTON OVERTAPE For sealing adjacent butted and overlapped membranes.....	31

SYSTEM 700 | COATINGS



NEWTON 701-HB High build epoxy floor coating.....	32
NEWTON 702 FLOORGUM PAINT Multi-purpose pedestrian coating.....	32
NEWTON 703 FLOORGUM TYRE Multi-purpose, low thickness vehicular coating suitable for both internal and external environments	33
NEWTON 708 AQUAFLOOR Clear polyurethane coating.....	33

SYSTEM 800 | DAMP PROOFING



NEWTON 803 Non-meshed damp proofing membrane	34
NEWTON 803 NEWTONITE Meshed damp proofing membrane	34
NEWTON 805 NEWLATH Damp proofing membrane & plaster base.....	35
NEWTON 806 CWC Thermal paint.....	35
NEWTON 807 BKK ECO Water repellent treatment for exposed walls	35
ANCILLARIES	
NEWTON 800 MESH PLUGS Fixing used internally and externally to secure Newton meshed membranes.....	36
NEWTON COB PLUGS Fixing plugs	36
NEWTON MESH TAPE Self-adhesive sealing tape for Newton meshed membranes.....	37
NEWTON MULTIPLUG Fixing plugs for Newton membranes in poorer substrates.....	37
NEWTON 801 MASTIC SEALANT Sealing mastic to apply to the plug before fixing into the membrane.....	37
NEWTON PROFILE Finishing profile	37

SYSTEM 900 | PRIMERS, PREPARATION AND REINFORCEMENT



NEWTON 903-P Primer for Newton 103-S and Newton 107F	38
NEWTON 904-RT Adhesive reinforcement tape for external corners of Newton 410 GeoDrain	38
NEWTON 906 LIME INHIBITOR Treatment of concrete surfaces for System 500.....	39
NEWTON 908 LIQUABOND Acrylic bonding agent & admixture.....	39
NEWTON 912-RT Non-woven reinforcement tape for liquid waterproofing membranes.....	39
NEWTON 914-RT Non-woven reinforcement tape for Newton 108 HydroBond-LM & 109-LM	40
NEWTON 915-RL Meshed reinforcement layer for liquid-applied membranes.....	40



PUMPS, PUMPING SYSTEMS AND ANCILLARIES



NEWTON CP250, CP400 & CP750 | A range of high quality clean water pumps41

NEWTON NP400 | Clean water pump41

NEWTON NP400PP | Puddle pump42

NEWTON NP400LLPS | Low level pumping system42

NEWTON NP400W | Medium head and medium performance pump42

NEWTON NP750 | High performance clean water pump43

NEWTON NP750W | High performance waste water pump43

NEWTON SP750 CUTTER | Sewage pump43

NEWTON TITAN-PRO WHITE | Pumping system for Newton System 50044

NEWTON TITAN-2 PUMPING SYSTEM | Low level pumping system44

NEWTON TROJAN PUMPING SYSTEM | Multi-use pumping system44

VICTRON INVERTER RANGE | Advanced battery back-up systems45

VICTRON BLUE POWER PANEL | Intuitive control and monitoring panel for the Victron Inverter system45

VICTRON COLOUR CONTROL PANEL | Intuitive control and monitoring panel for the Victron Inverter system45

VICTRON BATTERY MONITOR | Sophisticated battery monitoring tool for pump engineers46

NEWTON CONTROL PANEL-PRO | Multi-function pump control and monitoring panel46

NEWTON PUMP CONTROLLER | Twin pump controller with alarm46

NEWTON HIGH WATER LEVEL ALARM | Detects high water levels within pump chambers47

NEWTON DIALER | Provides enhanced alarm capability47

NEWTON NORTHSTAR BATTERIES | For use with Victron Inverters47

NEWTON CONDENSATE PUMP | High level inhibitor48

NEWTON uPVC PIPEWORK | For use with Newton pumping systems48

NEWTON SEWAGE SYSTEM | 1m diameter sewage systems48

Newton can also provide a wide range of specialist submersible pumps and sump chambers which can be tailor-made for site-specific conditions. For further information call our Technical department on 01732 360 095.

Newton System 100 | Liquid Waterproofing Membranes

Comprehensive portfolio of liquid-applied membranes for all substrates and all applications, ranging from very flexible liquid rubber products through to hard-wearing and resilient cementitious membranes, suitable for the waterproofing of retained structures and both covered and uncovered decks.



NEWTON 101F

Cementitious flexible waterproofing membrane

CODE	PACKAGING	COLOUR	APPLICATION RATE
CW 101	35kg	Component A: Grey Component B: Milky White	3.6kg/m ²



Newton 101F is a two-component acrylic modified cementitious coating. Being very flexible, it is the ideal product to waterproof concrete and masonry and can be used as a waterproof lining for lift pits, swimming pools, bathrooms and wet rooms.

- Two-component system for ease of mixing
- Flexible, therefore ideal for application where two substrates meet
- Second coat can be applied whilst the first coat is still green



NEWTON 102 NUSEAL-LM

Damp proofing and gas control liquid membrane

CODE	PACKAGING	COLOUR	APPLICATION RATE
PS902	5, 10 & 20L	Dark Blue	Dependent on use



Newton 102 Nuseal-LM is a single-component, high performance, elastomeric liquid rubber membrane specifically designed to provide a radon, gas and vapour barrier to vertical and horizontal surfaces. It is a water-based compound, formulated on a styrene-butadiene copolymer.

- Radon, gas and vapour barrier to walls and floors of concrete, masonry and brick substrates
- Vapour control layer below insulation in warm roof builds
- Floor DPM



NEWTON 103-S

Durable liquid waterproofing membrane

CODE	PACKAGING	COLOUR	APPLICATION RATE
103-S	30kg	Grey	3.6kg/m ²

Newton 103-S is a two-component, cementitious, modified-polymer waterproofing membrane with high adhesion, that can be applied very quickly by airless spray. It is designed for the internal and external waterproofing of concrete water-retaining and water-resisting structures such as reservoirs, water tanks and below ground structures.

- Podium decks, laydown areas and car parking areas
- Hard wearing protection and waterproofing to all concrete structures
- Spray applied, up to 1000m² per day



NEWTON 104

Crystalline waterproofing of concrete

CODE	PACKAGING	COLOUR	APPLICATION RATE
CW104	25kg	Grey	1kg/m ²

Newton 104 is applied to the surface of concrete to provide in-depth protection against the movement of moisture through the capillaries and hairline cracks within the concrete. It consists of Portland cement, specially treated quartz sand and a compound of active chemicals. Newton 104 is supplied in powdered form and is either sprinkled onto fresh concrete or mixed with water as a carrier and brush or spray-applied as a slurry for application to fully cured or older concrete or vertical surfaces.

- Pile caps and ring beams
- DPC to internal concrete walls
- Sealing of concrete surfaces



NEWTON 105-S

Multi-use cementitious mortar

CODE	PACKAGING	COLOUR	APPLICATION RATE
105-S	25kg	Grey	Varies on application

Single-component, cement-based mortar with multiple uses. Depending on water ratio, Newton 105-S can be used either for bag rubbing, or as a waterproof smoothing coat, repair mortar and tanking slurry. When mixed with its specialist additive, Newton 105-S also becomes a flexible tanking slurry.

- Simple to use but with many applications
- Single-component product allows part-use if sealed and kept dry



NEWTON 106 FLEXPROOF

Highly advanced single-component liquid waterproofing

CODE	PACKAGING	COLOUR	APPLICATION RATE
FP1 & FP4	X1 Plastic pail: 15kg NV Plastic pail: 7.5kg X1 Cartridge: 290ml	Grey	Dependent on use



Newton 106 FlexProof is a highly advanced single-component liquid waterproofing material, supplied in two variants: FlexProof-X1 is thixotropic and applied by trowel whereas FlexProof-NV has a much lower viscosity to enable it to be poured and spread more easily over large surfaces. Newton 106 FlexProof has tremendous grip to almost all clean substrates and is extremely flexible and rainproof in minutes, making it ideal for numerous applications to all parts of the building.

- No mixing required - simply open the packaging and use
- Can be used in sub-zero temperatures and on slightly damp substrate
- Superb adhesion and flexibility make it the perfect product for innumerable situations
- No primer required - saving on primer and labour costs



NEWTON 107F

Sprayable cementitious waterproofing membrane

CODE	PACKAGING	COLOUR	APPLICATION RATE
107F	30kg	Grey	3.2kg/m ²



Newton 107F is a two-component, cementitious, polymer-rich coating for the waterproofing and protection of concrete and masonry that can be spray-applied and is therefore ideal for large projects. Capable of withstanding heads of both positive and negative water pressure up to 10 bar, Newton 107F is ideally suited to the waterproofing of reservoirs, tunnels, water tanks, basements, podium decks, flat roofs, balconies and terraces. Due to its elastic properties, it is especially capable where the structure has both masonry and concrete elements and where differential movement is expected.

- Podium decks, flat roofs, terraces and balconies
- Water-retaining structures such as water tanks and reservoirs



NEWTON 108 HYDROBOND-LM

Sprayed instant-set rubber waterproofing membrane

CODE	PACKAGING	COLOUR	APPLICATION RATE
108-LM	Drum: 200L	Brown	Dependent on use
108-LM-1	IBC: 1000L	Cures black	



Newton 108 HydroBond-LM is a cold spray-applied, seamless, rubber waterproofing membrane for the external waterproofing of basements and foundation walls and covered decks. Normally specified as part of our HydroBond™ System in conjunction with Newton 403 HydroBond, the membrane can also be used on its own, terminating to raft or strip foundations.

- Waterproofing of basement walls as part of the Newton HydroBond™ System, sealing to Newton 403 HydroBond to waterproof the whole outside of the structure
- Standalone waterproofing membrane for basement, foundation and earth-retained walls



NEWTON 109-LM

Flexible rubber waterproofing membrane

CODE	PACKAGING	COLOUR	APPLICATION RATE
109-LM	20L	Brown Cures black	Dependent on use



Newton 109-LM is a flexible, single-component, cold-applied, seamless rubber waterproofing membrane with a number of uses for the external waterproofing of basements, foundation walls, decks, and flat roofs. Newton 109-LM is also used as a detailing membrane for the termination and jointing of other Newton waterproofing products, and with its very high adhesive properties, it is the perfect primer for the adhesion of butyl products to concrete and mortar.

- Waterproofing membrane to decks, balconies and flat roofs where the membrane is to be protected by covering over, such as green roofs, timber decks, paving, etc
- Waterproofing of retained structures, together with Newton 403 HydroBond



NEWTON 110 WATSTOP

Epoxy-cement waterproofing and surface repair

CODE	PACKAGING	COLOUR	APPLICATION RATE
WATSTOP	10kg	Black	Dependent on use



Versatile three-component cement and epoxy resin which, when mixed, produces a mortar that is used to prepare the substrate by filling cracks, holes and depressions. The addition of water to the mix, produces a liquid membrane, which, dependent on application rate, can be used as a primer, a DPM and vapour barrier, or as a waterproofing membrane.

Newton 110 WATstop has tremendous adhesion to almost all substrates and is suitable for a number of applications, from damp proofing and stabilising mortar walls, repairs and DPM to floors, to surface repair and waterproofing lift pits.

- Repair, primer, DPM, vapour barrier and waterproofing in one product
- Solvent-free
- Superb adhesion to nearly all substrates



NEWTON 111 ACRIFLEX ONE

Fast-curing, UV-stable and trafficable waterproofing paste

CODE	PACKAGING	COLOUR	APPLICATION RATE
111	25kg	Grey*	2.0kg/m ²



Newton 111 Acriflex One is a water-based paste, formulated with elastomeric resins and special fillers, designed to cure quickly in low temperatures and high levels of relative humidity. Ready to use, 111 Acriflex One is applied in a single coat and is ideal for balconies and decks that are exposed to foot traffic where a coloured wearing coat is required. 111 Acriflex One can also be used to waterproof the external face of retained walls. It is UV-resistant and available in various colours.

- Fast-drying - rain tight in 20 minutes
- Single-component and single coat application
- UV-stable and resistant to light foot traffic

*Red and green available on request



Newton System 100 | Liquid Waterproofing Membranes

NEWTON 112 AQUABIT

Seamless waterproofing paste for retaining walls

CODE	PACKAGING	COLOUR	APPLICATION RATE
DN402	25L	Black	2.0 to 2.5 l/m ²

Newton 112 AquaBit is a single-component waterproofing paste that is enriched with polystyrene microspheres, which form a crack-bridging seamless membrane for the waterproofing of the wet side of foundation walls.

- Single-component and single coat
- Suitable for concrete, mortar and ICF



NEWTON 114 ACRIFLEX

Fibre-reinforced liquid waterproofing membrane

CODE	PACKAGING	COLOUR	APPLICATION RATE
AF	25kg	Grey	2.2 kg/m ²

Newton 114 Acriflex is a two-component, acrylic/cement and fibre-reinforced liquid waterproofing membrane suitable for many applications such as the waterproofing of flat roofs, balconies, swimming pools, parking areas and wet rooms.

- Can be tiled directly over ceramic tiles in combination with suitable primer
- Compatible with a number of finishing coatings



NEWTON 117 ACRIFLEX RAPIDO

Fast-curing liquid waterproofing membrane for deck and balconies

CODE	PACKAGING	COLOUR	APPLICATION RATE
117	25kg	Grey*	2.0 kg/m ²

Newton 117 Acriflex Rapido is a single-component liquid waterproofing membrane that, when cured, can receive a number of coloured protective coats to provide a full system for foot and vehicle trafficked areas. The membrane is rain-tight after 20 minutes and provides a flexible membrane suitable for both internal and external use.

- Fast drying – rain tight in 20 minutes
- UV-stable and resistant to light foot traffic
- Can receive a range of coloured wearing coatings

*Red, green, white & sand available on request



ANCILLARIES

NEWTON 912-RT & NEWTON 914-RT

CODE	SIZE	COLOUR	DENSITY
912-RT	150mm x 50m	White	30g/m ²
914-RT	150mm x 100m	White	100g/m ²

912-RT: Reinforcement tape used with Newton liquid-applied membranes and coatings to reinforce changes in direction.

914-RT: Reinforcement tape used with Newton 108 HydroBond-LM and Newton 109-LM liquid-applied membranes.



COLLOMIX MIXING EQUIPMENT

COLLOMIX Xo55 DUO

Dual forced action mixer for Newton liquid waterproofing membranes

CODE	POWER	OUTPUT	MIXING QUANTITY
Xo55	110V	1450W	Up to 90L

Hand controlled forced action mixer with counter-rotating stirrers.

- Intensive, fast, thorough mixing
- Excellent ergonomics due to upright working position with no back-driving torque acting on the operator



COLLOMIX Xo1

High performance, variable speed mixer

CODE	POWER	OUTPUT	MIXING QUANTITY
Xo1	110V	1010W	Up to 40L

High performance hand controlled mixer.

- Compact and lightweight 1 gear device for a variety of mixing tasks
- Higher standing position for upright work



COLLOMIX MIXING PADDLES

For use with Collomix Xo1

CODE	FOR MIXING	PADDLE Ø	LENGTH
DLX120 HF	101F, 104, 109, 201, 103-S, 107F, 203-RM & 701-HB	120	590mm
WK120 HF	104 & 203-RM	120	590mm
KR120 HF	AF, 117 & 111	120	590mm



2 year warranty on all Collomix devices

RMX MIXING STAND

Pneumatic mixing aid

CODE	SIZE (EXTENDED)	WEIGHT	MAX. HEIGHT OF PAIL
RMX	455mm x 455mm x 1180mm	17kg	450mm

Mixing without expending effort: the stand holds the Xo hand mixers. During the mixing, it can be moved into the mixer in all directions using the articulated arm. A gas pressure spring makes it easier to move the mixer up and down.

- Easy handling
- Foldable; stable stand
- Easy transport



MIXER CLEANING BUCKET

Cleaning system for stirrers

CODE	SIZE	WEIGHT	MAX. Ø OF PADDLE
MCB	30L	4.4kg	210mm

For simple, fast cleaning after the mixing, place the paddle into the water-filled bucket and let the mixer run for a short time. The brushes thoroughly remove the material residue and the cover can be removed for emptying.

- Also suitable for the duo mixer



MORTAR BUCKETS

High quality polyethylene buckets

CODE	SIZE	CART
MB65	65L	TC1
MB90	90L	TC2

Black, polyethylene bucket with high stability and carrying capacity. Ideal for use with Collomix mixers.



TRANSPORT CARTS

Engineered transport system for mortar buckets

CODE	DIAMETER	BUCKET
TC1	580mm	MB65
TC2	680mm	MB90

Transport cart with pneumatic tyres and locking device for pouring material. Effortless movement and pouring from mixing buckets.



Collomix mixing equipment can be used with all Newton products that require mixing.

Newton System 200 | High Build Cement Mortars

Range of cement-based mortars suitable for where a high depth of repair or levelling to concrete is required.



NEWTON 203-RM

Rapid-set & high strength repair mortar

CODE	PACKAGING	COLOUR	APPLICATION RATE
203-RM	25kg	Grey	Dependent on use



Newton 203-RM is a single-component, fast-setting, Portland cement-based structural mortar, used primarily for the durable repair of concrete. Setting in just 10 minutes at 20°C, Newton 203-RM is ideal for areas that cannot be taken out of service for long periods, or where the concrete is subjected to heavy wear, such as decks, floors, footpaths and bridges.

- Rapid, durable and extremely strong repairs to concrete, including leading edge repairs to step nosings
- Bonded low thickness screed
- High bond and quick drying smoothing fillet for use with Newton liquid waterproofing products



NEWTON 260-LC

Cementitious epoxy levelling compound

CODE	PACKAGING	COLOUR	APPLICATION RATE
260-LC	30kg	Grey	Varies on application



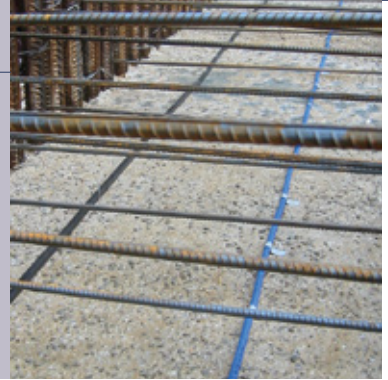
Newton 260-LC is a self-levelling two-component, epoxy and polymer modified cementitious screed, designed to level out rough, tamped concrete prior to the application of Newton high performance coatings and liquid waterproofing membranes. It can be overcoated after 24 hours of application (at 20°C) and can be applied from 0mm up to 60mm thick in a single application.

- Self levelling to 60mm
- Can be feathered to nothing
- Tremendous adhesion to concrete



Newton System 300 | Waterbars, Waterstops and Waterplugs

Newton System 300 is a range of products, used to waterproof construction joints and movement joints of retained concrete structures so that they become integrally waterproof – defined within BS 8102:2009 as Type B waterproofing.



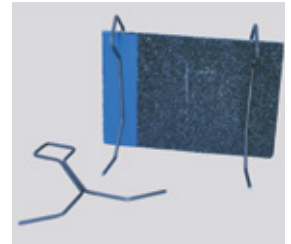
NEWTON 301 EASYPROOF

Metal construction joint waterbar

CODE	SIZE	COLOUR	APPLICATION RATE
SX301	140mm x 6m	Silver/Black	N/A

Newton 301 EasyProof is a coated metal waterbar system used for the sealing of construction joints within retained concrete structures. Newton 301 EasyProof features a flexible, adherent coating on one side, which is covered with a granular material. The rough coating creates a permanent watertight seal with the surrounding concrete to create a waterbar that works immediately, without requiring activation by water, as required with hydrophilic waterbars.

Because the waterbar is fixed to the steel reinforcement, it is only suitable for use with rafts featuring kickerless construction. For rafts with kickers, Newton 312 BentoProof should be used.



NEWTON 303 POLYPROOF

Polymer swelling waterbar

CODE	SIZE	COLOUR	APPLICATION RATE
SX303	Various	Blue	N/A

Newton 303 PolyProof is a hydrophilic, thermoplastic elastomer (TPE) waterbar, which swells when activated by moisture. The swelling is achieved through special hydrophilic polymers, which are inseparably linked within the carrier material. This results in high elasticity and exceptional tensile strength, even when fully expanded within the joint, making Newton 303 PolyProof ideal for non-compressed joints.

Due to its high resistance to acids, alkalis and organic solutions, Newton 303 PolyProof can be used to seal joints where aggressive water is expected, such as within sewage treatment plants, bio-gas plants and liquid waste holding tanks. Newton 303 PolyProof can be installed using Newton 306 SwellMastic, Newton 309-M and Newton Fixing Mesh.

The following joints can be waterproofed with Newton 303 PolyProof:

- Raft - Raft
- Wall - Wall
- Slab - Steel piled cut off wall



Waterbars, Waterstops and Waterplugs

NEWTON 306 SWELLMASTIC

Swelling adhesive mastic

CODE	PACKAGING	COLOUR	APPLICATION RATE
SX306	290ml	White	5-8 l/m per cartridge

Newton 306 SwellMastic is a high quality, fast-curing, swellable, single-component, polymeric adhesive sealant. The special composition of Newton 306 SwellMastic makes the sealant swell when in contact with water (to about 150% of original size).

- Detailing product for Newton 403 HydroBond
- Adhesive for the installation of Newton System 300 hydrophilic waterbars
- Sealing of service protrusions through the structure



NEWTON 307 PIPESEAL

EPDM pipe waterbar

CODE	SIZE	COLOUR	APPLICATION RATE
SX307	110mm & 160mm	Blue	N/A

Newton 307 PipeSeal is an advanced EPDM pipe collar that provides a physical waterbar for the waterproofing of pipes penetrating through earth-retained structures and to prevent water ingress around pipes and gullies to flat roofs and decks.

Newton 307 PipeSeal can be used to waterproof pipes and gullies protruding through:

- Walls, rafts, slabs and decks to earth-retained structures
- Flat roofs, decks, balconies and terraces



NEWTON 308 STOPAQ

Service duct waterproofing

CODE	PACKAGING	COLOUR	APPLICATION RATE
SX308	308 Stopaq - 0.53kg tubes = 0.4L Stopaq FR Mortar - 0.5kg tubs = 0.6L	Green	Dependent on size of service sleeve

Newton 308 Stopaq is a single-component, highly flexible compound used for the sealing of conduits and pipes through service duct sleeves.

The product is incredibly effective at sealing around numerous services within the sleeve, even where significant water ingress exists.

Typical applications include:

- Wall inlets below groundwater level - Newton 308 Stopaq is suited for sealing against ground and surface water intrusion around pipes and cables, leading through building wall penetrations into basements and other earth-retained structures
- Sealing of running water leaks - for permanent stopping of ground or surface water leaks through cable and pipe wall penetrations
- Wall penetrations inside buildings - permanent sealing and protection of wall penetrations against gas, fire or flooding is obtained with Newton 308 Stopaq, together with the Stopaq FR mortar on either side of the wall
- Not suitable for use around hot pipes



NEWTON 309-M

Adhesive mastic

CODE	PACKAGING	COLOUR	APPLICATION RATE
309-M	290ml	White	Dependent on use

Newton 309-M Adhesive is an MS polymer-based, durable and fast-curing elastic adhesive. It has a very high initial strength and bonds without primer on almost all materials used in the construction industry, including aluminium, galvanized and stainless steel, zinc, copper, natural stone, concrete, brick, cement-based cover sheeting, HPL panels, treated wood, gypsum, glass, glazing, and various synthetic materials.

- As an adhesive for fixing Newton Baseboard
- For installing Newton waterbars to concrete and/or steel surfaces



NEWTON 312 BENTOPROOF

Bentonite swelling waterbar

CODE	SIZE	COLOUR	APPLICATION RATE
SX312	20mm x 25mm x 5m	Black	N/A

Newton 312 BentoProof is a sodium-bentonite based hydrophilic waterbar, suitable for sealing construction joints in concrete structures. When 312 BentoProof comes into contact with water, (other than the normal dampness of the concrete, which is not sufficient) it will swell to seal the joint.

- Recommended waterbar for compressed joints such as at the kicker
- Can be installed using Newton 306 SwellMastic, Newton 309-M and Newton Fixing Mesh



NEWTON 313-WP WATERPLUG

Fast-setting cement/polymer waterplug

CODE	PACKAGING	COLOUR	YIELD
313-WP	25kg	Grey brown	1kg = 0.46L

Newton 313-WP WaterPlug is a fast-setting, polymer compound that instantly stops running water or seepage through masonry or concrete substrates. It becomes harder and more resistant when subjected to constant water pressure. Newton 313-WP WaterPlug is a non-shrink material that expands slightly and sets in approximately two minutes, depending on the temperature of the mixing water and the surface to which it is applied. Lower temperatures will retard the set time and higher temperatures will accelerate the set time.

- Leak sealing prior to tanking with Newton cementitious waterproofing membranes
- Sealing of leaks at wall/floor junctions
- Sealing of leaking mortar joints



NEWTON 314-BP BENTONITE POWDER

Swelling bentonite detailing powder

CODE	PACKAGING	COLOUR	YIELD
BP314	25kg	Light tan	25kg of product will produce a 25m fillet of 40mm x 40mm



Newton 314-BP Bentonite Powder is a naturally occurring sodium bentonite powder used for detailing to the Newton HydroBond™ System, specifically where Newton 403 HydroBond terminates to otherwise difficult to detail building elements, such as piled walls, support piles, pile caps, and protrusions through the membrane.

- Newton 314-BP Bentonite Powder can be mixed with fresh, clean water to seal parts of Type A and B waterproofing systems, where a reinforced concrete construction is used
- Sealing of pipes, sleeves, columns and posts that penetrate the Newton HydroBond™ System
- Between the horizontal and vertical application of Newton 403 HydroBond to irregularly shaped interfaces such as piled walls

ANCILLARIES

NEWTON FIXING MESH

CODE	SIZE	QUANTITY
SX312-M	800mm x 30mm	7 Lengths per pack

Steel fixing mesh used to secure and protect hydrophilic waterbars from displacement during concrete placement.



Newton System 400 | External Waterproofing and Drainage Membranes

Complete range of preformed waterproofing and drainage membranes which can be applied externally to the structure to provide waterproofing solutions for earth-retained structures and covered decks.



NEWTON 403 HYDROBOND

Externally applied waterproofing membrane

CODE	SIZE	COLOUR	AREA
HB-2	Roll: 20m x 1m	White/Grey	20m ²

Newton 403 HydroBond is a very high performance composite sheet membrane that features a locking fleece to one side and a polymer hydrophilic coating to the other. When placed below the new raft or against permanent or temporary timber wall formwork, the fibres of the fleece inner core are encapsulated into the concrete, forming a close and intimate bond. The membrane becomes fully-engaged into the concrete to prevent water tracking and is suitable for all below-ground and earth-retained structures, ranging from domestic basements to the largest civil engineering projects. The hydrophilic coating expands when in contact with water and seals small holes that may be accidentally formed during fixing of the reinforcing steel or the compaction of the concrete.

- As a continuous membrane to permanent raft and wall formwork such as the raft blinding and piled walls of reinforced concrete earth-retained structures



NEWTON 407 DECKDRAIN

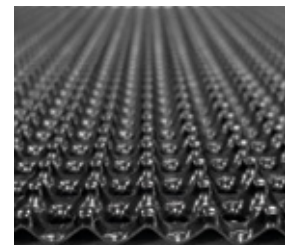
Drainage membrane for decks and flat roofs

CODE	SIZE	COLOUR	AREA
M30	Roll: 25m x 1.1m	Black	27.5m ²

Newton 407 DeckDrain is a double cusped, deck and flat roof drainage membrane, that incorporates a non-woven, geotextile filter layer, bonded to a water impermeable HDPE (High Density Polyethylene) core.

Used as the drainage layer above Newton deck, balcony or flat roof liquid waterproofing membranes, particularly where:

- Block pavements or flooring slabs are bedded on sand as the surface finish
- Soil filled planters are included to the deck or flat roof
- An intensive green roof is planted to the deck or flat roof



NEWTON 408 DECKDRAIN

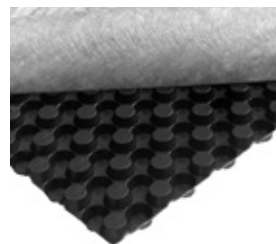
Drainage membrane for decks and flat roofs

CODE	SIZE	COLOUR	AREA
M33	Roll: 20m x 2.0m	Black	40m ²

Newton 408 DeckDrain is a double cusped, deck and flat roof drainage membrane, that incorporates a polypropylene geotextile filter layer, bonded to a water impermeable HDPE (High Density Polyethylene) core. The double cusped design provides two layers of drainage; allowing for primary drainage through the geotextile filter, as well as secondary drainage between the underside of 408 DeckDrain and the primary waterproofing layer. The lower drainage layer eliminates the risk of trapped water, a problem associated with conventional single cusped deck drainage membranes.

Used as the drainage layer above Newton deck, balcony or flat roof liquid waterproofing membranes, particularly where:

- Block paving or flooring slabs are bedded on sand as the surface finish
- Soil filled planters are included to the deck or flat roof
- An intensive green roof is planted to the deck or flat roof



NEWTON 409 ROOTBARRIER

Puncture-resistant root barrier membrane

CODE	SIZE	COLOUR	AREA
M32	Roll: 50m x 1.2m	Black	60m ²

Newton 409 RootBarrier is designed to eliminate root penetration. It consists of an impermeable High Density Polyethylene (HDPE) membrane, providing robust root-proof protection to the primary waterproofing membrane to green roofs or planters, where intrusive root systems are present.

- As a root barrier to protect the waterproofing membrane from root damage within intrusive green roof systems or planters



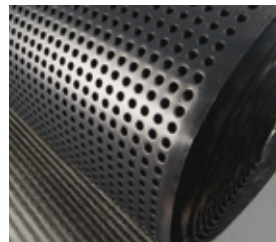
NEWTON 410 GEODRAIN

Externally applied drainage membrane for basements

CODE	SIZE	COLOUR	AREA
M18	Roll: 12.5m x 2.0m	Black	25m ²

Newton 410 GeoDrain is a two-core drainage sheet consisting of a non-woven, geotextile filter layer, thermally welded to a water impermeable HDPE (High Density Polyethylene) drainage membrane.

- As the drainage layer of an externally applied waterproofing system to sloping sites when used in conjunction with Newton's range of liquid-applied external tanking membranes to BS 8102:2009
- Protection of the structure from aggressive chemicals in the groundwater
- To prevent the build up of groundwater to retaining walls



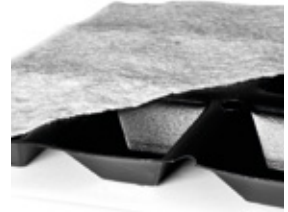
NEWTON 420 RESERVOIR

Extensive green roof drainage membrane

CODE	SIZE	COLOUR	AREA
M31	Roll: 50m x 920mm	Black	46m ²

Newton 420 Reservoir is a unique drainage and water-retention membrane for use where a water reservoir is required for extensive green roofs of sedum, herbaceous plants, mosses or grass above decks and roofs.

- As a water holding and drainage layer above a deck, flat roof or pitched roof where shallow planting is used to create an extensive green roof



ANCILLARIES

NEWTON MULTIPLUG

CODE	SIZE	QUANTITY PER BAG
A1	10mm x 57mm	100

Fixing plug that can be used to fix the top of Newton 410 GeoDrain to the substrate.

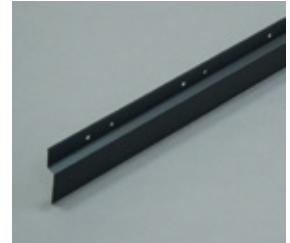
10mm SDS drill bits are used with the plug and are available under product code DB2.



NEWTON GEOPROFILE

CODE	SIZE	COLOUR
A15	2m x 64mm	Black

Newton GeoProfile is a HDPP capping strip that is applied to the top of Newton 410 GeoDrain, sealing the membrane against accidental ingress of debris during the backfilling process.



NEWTON WATERSEAL TAPE

CODE	SIZE	COLOUR
A5	30mm x 2mm x 22.5mm	Black

Double-sided butyl sealing tape used to form a seal at overlaps of adjacent sheets of Newton membranes.



Newton System 400 | External Waterproofing and Drainage Membranes

NEWTON 904-RT

CODE	SIZE	COLOUR	DENSITY
904-RT	10m x 0.15m	White	42g/m ²

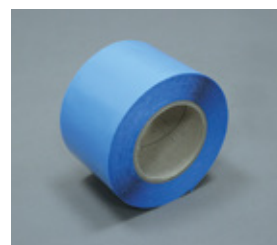
Newton 904-RT is a self-adhesive, spun-bond, polypropylene reinforcement tape used to provide continuation of the outer textile layer of Newton 410 GeoDrain at external corners.



NEWTON HYDROBOND TAPE

CODE	SIZE	COLOUR
HBT	70mm x 20m	Transparent

Double-sided sealing tape for lap joints/detailing in the HydroBond™ system.



NEWTON SOFT WASHER FIXINGS

CODE	SIZE	QUANTITY
4031	8mm x 36mm	100

Used when 403 HydroBond is pre-applied to concrete such as secant piled walls. The soft washer fixings can be applied with a lump hammer.



NEWTON SPIT GUN*

CODE	MODEL
HBA1	800P + 20PIN

Spit gun for fixing 403 HydroBond to a variety of substrates. Magnetic washer tip for gun is required and sold separately (HBA2).

* Must be used by trained installers



NEWTON HYDROBOND FIXING SET

CODE	SIZE	QUANTITY
HBA3	27mm x 10mm nails	500
HBA4	25mm Ø Pulsa washers	1000

Proprietary fixing nails for the Pulsa 800 series Spit Gun. Includes 50ml gas cylinder. Washer to be applied prior to firing fixing through HydroBond.



Newton System 500 | Cavity Drain Waterproofing

The professional's "waterproofing system of choice", Newton System 500 is an internally applied waterproofing system based upon our range of cavity drain membranes, drainage conduits and sophisticated pumping and control systems. Newton recommends that our structural waterproofing systems are installed by our nationwide network of Newton Specialist Basement Contractors (NSBC) who are trained by Newton and can offer full professional indemnity on design and insured backed guarantee on the installation. Newton System 500 holds BBA certification (94/3010).



NEWTON PAC-500

Positive air curtain system

The Newton PAC-500 System is a combined 'Type C' (BS 8102:2009) Cavity Drain Waterproofing and Ground Gas mitigation system. The addition of the PAC Pressure Air Curtain to the System 500 waterproofing provides protection against water, gasses and vapours from the ground within a single, internally applied system. This system provides basement waterproofing across all environmental grades (Grade 1-3) in accordance with BS 8102:2009, as well as a ground gas mitigation system that is integrity tested with tracer gas to confirm viability.

The PAC-500 system is installed by NSBC contractors in partnership with our ground gas mitigation specialist partners. Guarantees on gas tightness and waterproofing will be provided.



NEWTON 503

3mm cavity drain membrane

CODE	SIZE	COLOUR	AREA
M5	Roll: 2.0m x 20m	White/Translucent	40m ²

Newton 503 is a high quality cavity drain waterproofing and damp proofing membrane suitable for use internally above or below the ground to retaining walls, vaulted soffits and floors. Newton 503 can be used within our Newton System 500 waterproofing system that includes Newton drainage and pumping systems. Please see the Newton Installation Manual for details on fixing and finishing of the product. Newton 503 holds BBA certification (94/3010).

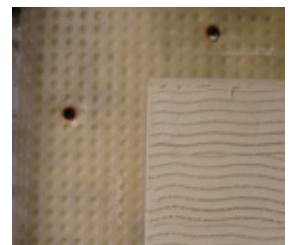


NEWTON 503 MESH

3mm meshed cavity drain membrane

CODE	SIZE	COLOUR	AREA
M11	Roll: 2.0m x 20m	White/Translucent	40m ²

Newton 503 Mesh is a high quality cavity drain waterproofing membrane suitable for use internally below the ground to retaining walls and vaulted soffits. With its 3mm stud, Newton 503 Mesh is just 3.5mm in overall thickness, and is the preferred meshed membrane where space is of a premium. Its meshed surface provides an excellent 'key' for lime mortars, renders, plasters or dabbed plasterboard. Please see the Newton 503 Mesh Installation Instructions for details on fixing and finishing of the product. Newton 503 Mesh holds BBA certification (94/3010).



NEWTON 508

8mm cavity drain membrane

CODE	SIZE	g/m ²	COLOUR	AREA
M1	Roll: 2.4m x 20m	500	White/ Translucent	48m ²
M1R & M2R	Roll: 2.4/2.07m x 20m	700	White/ Translucent	48/40m ²



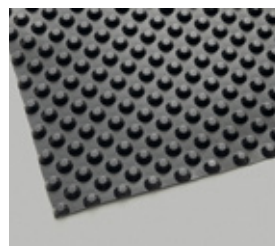
Newton 508 is a high quality cavity drain waterproofing membrane suitable for use internally below the ground to retaining walls and vaulted soffits. Newton 508 is the most commonly used membrane within our Newton System 500 waterproofing system that includes Newton drainage and pumping systems. Newton 508 is guaranteed against deterioration for 30 years, with a life expectancy of at least 50 years (DIN 9001:2000) and is supported by BBA Certification Number 94/3010.

- Wall membrane as part of Newton System 500
- Newton 508 has independent test data for CO₂ Methane and Radon permeability

NEWTON 508 ECO FLOOR

8mm cavity drain floor membrane

CODE	SIZE	COLOUR	AREA
M2	Roll: 2.5m x 20m	Black	50m ²



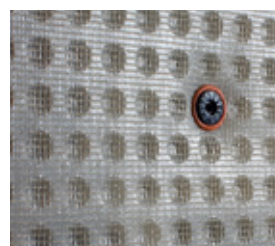
Newton 508 Eco Floor is a high quality cavity drain waterproofing membrane made from recycled High Density Polyethylene, used as a high strength flooring membrane within our Newton System 500 waterproofing system that includes Newton drainage and pumping systems. Newton 508 Floor is guaranteed against deterioration for 30 years, with a life expectancy of at least 50 years (DIN 9001:2000) and is supported by BBA Certification Number 94/3010.

- 100% recycled and BBA approved
- 508 Floor has a diamond stud pattern with 15% more studs per square metre than the standard Newton 508. The greater surface area results in higher compressive strength.

NEWTON 508 MESH

8mm meshed cavity drain membrane

CODE	SIZE	COLOUR	AREA
M3	Roll: 2.0m x 20m	White/Translucent	40m ²



Newton 508 Mesh is a high quality meshed cavity drain waterproofing membrane, suitable for use internally below the ground to retaining walls and vaulted soffits.

- A waterproof base for renders, plasters or dot & dab plasterboard
- Areas where space is limited, such as stairways
- As a render base to external areas of the waterproofing scheme, such as light well walls
- Newton 508 Mesh holds BBA certification (94/3010)

Newton System 500 | Cavity Drain Waterproofing

NEWTON 520

20mm cavity drain membrane

CODE	SIZE	COLOUR	AREA
M4	Roll: 2m x 20m	Black	40m ²

Newton 520 is a cavity drain waterproofing membrane made from recycled High Density Polyethylene. It is one of the main constituent parts of the Newton System 500 cavity drain system used for waterproofing earth-retained structures, including drainage channels sited below the membrane for increased drainage capacity. With its 20mm deep stud profile, Newton 520 is used within Newton System 500 as a high drainage capacity floor membrane and is generally specified where it is anticipated that there may be a risk of severe water penetration. Newton 520 holds BBA certification Number 94/3010.



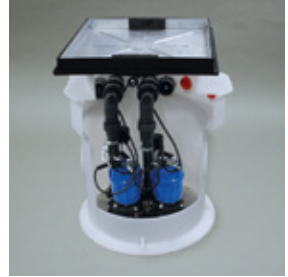
- Floor membrane as part of Newton System 500

NEWTON TITAN-PRO WHITE

Pumping system for Newton System 500

CODE	SIZE	COLOUR
TPW	600mm x 805mm	White

The Titan-Pro White packaged sump system is designed specifically to be used with Newton System 500. The adjustable neck allows for the sump to be installed at a fixed height relative to the slab so that the connection in from the Newton drainage system and the pump discharge line are made above the concrete and always at the same height, relative to the slab.

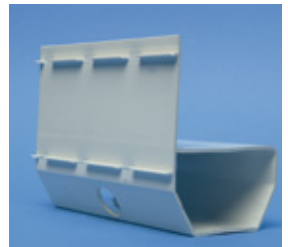


- The Titan-Pro White is specifically designed to be used with Newton System 500

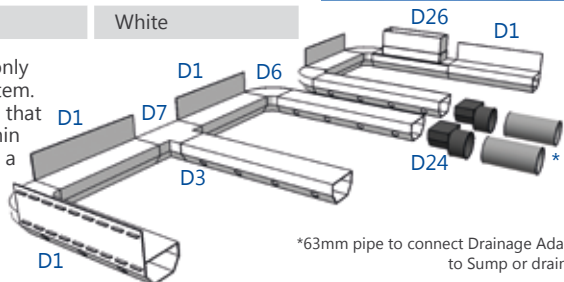
NEWTON BASEDRAIN

Drainage system

CODE	PRODUCT NAME	COLOUR
D1	Newton Basedrain	White
D3	Newton Floordrain	White
D6	Newton Basedrain Corner	White
D7	Newton Basedrain T Piece	White
D22	Basedrain Jointing Tape	White
D24	Newton Basedrain Adaptor	Black
D26	Basedrain Inspection Port Pack	White



Newton Basedrain is the drainage system most commonly used within the Newton System 500 waterproofing system. The drainage system comprises a range of products that collectively receive water ingressing at weaknesses within the structure and then discharge the collected water to a Newton Sump System or safe gravity drainage.



*63mm pipe to connect Drainage Adaptor to Sump or drainage

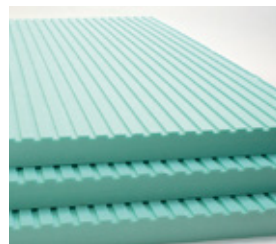
NEWTON FIBRAN XPS 500-C

Closed-cell slotted insulation board

CODE	SIZE	COLOUR	AREA
500C	50mm x 1000mm x 600mm	Green	0.6m ²

Newton Fibran XPS 500-C is a 50mm deep, closed-cell thermal insulation board made from rigid extruded polystyrene foam (XPS). The product is manufactured in accordance with EN 13164; "thermal insulation products for buildings - factory made products of extruded polystyrene (XPS)-specification."

- As the spacer below Newton System 500 flooring membranes
- Protection of Newton System 100 liquid-applied waterproofing membranes applied externally to retained walls
- Insulated support below Newton 403 HydroBond waterproofing membrane



NEWTON BASEBOARD

Drainage conduit

CODE	PRODUCT NAME	COLOUR
D9	Baseboard Outside Corner	White
D10	Baseboard Inside Corner	White
D11R & D11L	Baseboard End Cap Right/Left	White
D12	Baseboard Length (2.4m)	White
D12H	Baseboard Hanger	White
D13	Baseboard Connector	White
309-M	Newton 309-M Adhesive Mastic	White



Newton Baseboard is a unique above-slab drainage conduit, designed to capture water that is entering the structure via the wall/floor junction for removal to an appropriate drainage medium.

Note: A Newton waterproof vapour barrier should be applied to the wall floor junction prior to application of the Baseboard system.

ANCILLARIES

MEMBRANE	FIXING PLUG	JOINTING TAPE	REPAIRS
503	MultiPlug	Newton Overtape	Newton Overtape
503 Mesh	MultiPlug	Newton Mesh Tape	Newton Mesh Tape
508	MultiPlug	Newton Waterseal Tape	Newton Overtape
508 Mesh	MultiPlug	Newton Mesh Tape	Newton Mesh Tape
520	N/A	Waterseal Tape	Newton Overtape

Newton System 500 | Cavity Drain Waterproofing

NEWTON MULTIPLUG

CODE	SIZE	QUANTITY PER BAG
A1	10mm x 57mm	100

The fixing plug for securing Newton System 500 membranes to the wall and for providing a fixing point for 5mm screws and the Newton Helifix Wall Tie.

10mm SDS drill bits are used with the plug and are available under product code DB2.



NEWTON NUSEAL PLUGS

CODE	COLOUR	QUANTITY PER BAG
A2	Red	100
A3	White	100

Slightly longer than the Newton MultiPlug, supplied without a sealing washer and used with a bead of Newton Waterseal Rope as the seal for fixing the membrane to vaulted ceilings and sloping soffits.

11mm SDS drill bits are used with the plug and are available under product code DB3.



NEWTON WATERSEAL TAPE

CODE	COLOUR	SIZE
A5	Black	30mm x 2mm x 22.5mm

Double-sided butyl sealing tape used to form a seal at the flanged and stud-into-stud overlap of adjacent sheets of Newton membranes.



NEWTON WATERSEAL ROPE

CODE	COLOUR	SIZE
A6	Black	4.75lm

A butyl bead that is used to form a sealing grommet at the base of the Newton Nuseal Plug for fixing to vaults and soffits, as well as for forming a seal at the stud-over-stud overlap of adjacent sheets of Newton 508 and Newton 503.



NEWTON OVERTAPE

CODE	COLOUR	SIZE
A7	Black	150mm x 20m
A8	Black	100mm x 20m

A single-sided butyl tape that is used over joints for the Newton PAC-500 radon system but is often used to reinforce joints for non-radon systems, especially around protrusions at 3D detailing.



NEWTON MESH TAPE

CODE	SIZE	QUANTITY PER BAG
A25	100mm x 10m	Single Units

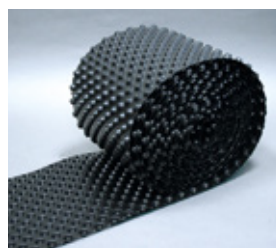
A meshed variant of, and used in the same way as, Newton Overtape, but to Newton meshed membranes.



NEWTON CONDENSATION STRIP

CODE	COLOUR	SIZE
M14	Black	250mm x 20mm

Forms an 8mm gap between the Newton Basedrain perimeter drainage channel and wall membrane so that if condensation should form, it will be collected by the Basedrain and not pool on the floor, damaging finishes.



NEWTON INSULATION FIXINGS

CODE	SIZE	QUANTITY PER BOX
IF90	10mm x 90mm	200

Fixing plug to mechanically fix Newton Fibran XPS 500-C insulative spacer to the slab/raft where lightweight floor finishes are to be used. Use 5 fixings per board.

10mm SDS drill bits are used with the plug and are available under product code DB2.



Newton System 600 | Sheet Flooring Membranes

Range of flooring membranes which provide a complete damp proof solution. Our membranes de-couple the floor finish from the substrate, preventing damage due to substrate movement and cracking.



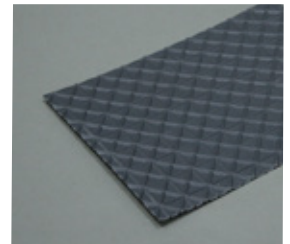
NEWTON 601 SLIMLINE

High-grade flooring membrane

CODE	SIZE	COLOUR	AREA
M6	Roll: 2.06m x 20m	Grey	40m ²

Newton 601 Slimline is a high-grade flooring membrane used primarily for isolating moisture-sensitive flooring from dampness in the floor slab. It can be used as the floor membrane as part of Newton System 500, when the survey has ascertained that there is no risk of water entering through the body of the slab.

- To protect flooring from slabs that are not yet cured
- Above contaminated floors
- As a high grade DPM



NEWTON 603

High-grade flooring membrane

CODE	SIZE	COLOUR	AREA
M19	Roll: 1.0m x 10m	Transparent	10m ²
M23	Roll: 2.0m x 20m	Transparent	40m ²

Newton 603 is a high quality flooring membrane suitable for use above new and existing floors. The 3mm studs allow for pressure equalisation of dampness within the floor below, allowing for dissipation at the room perimeter and subsequent drying of the floor.



ANCILLARIES

NEWTON WATERSEAL TAPE

CODE	COLOUR	SIZE
A5	Black	30mm x 2mm x 22.5mm

Double-sided butyl sealing tape used to form a seal at the flanged and stud-into-stud overlap of adjacent sheets of Newton membranes.



NEWTON OVERTAPE

CODE	COLOUR	SIZE
A7	Black	150mm x 20m
A8	Black	100mm x 20m

A single-sided butyl tape that is used over joints of Newton floor membranes.



Newton System 700 | Coatings

System 700 is a range of liquid-applied protective and decorative internal flooring products. These products are fast-curing and available in a variety of colours. They are typically used for the refurbishment and protection of commercial and domestic floors.



NEWTON 701-HB

High build epoxy floor coating

CODE	PACKAGING	COLOUR	APPLICATION RATE
LM 701	5kg	Grey	8.3 - 10.0 m ²



Newton 701-HB is a two-component solvent-free epoxy resin based floor coating, developed to provide protective and decorative properties to concrete, steel and other substrates. The material is supplied as a two pack system, comprising pre-weighed amounts of both the Base and Curing Agent. After mixing together, an easily applied chemical and abrasion-resistant finish is produced.

Can be used as a waterproof, tough, chemical resistant floor coating or as an internal lining for concrete or steel storage tanks containing oils, chemicals, water, etc. It is particularly suitable for chemical bunds.

Suitable for use in:

- Food preparation areas
- Breweries
- Abattoirs



NEWTON 702 FLOORGUM PAINT

Multi-purpose pedestrian coating

CODE	PACKAGING	COLOUR	APPLICATION RATE
FGP	25kg	Black*	1.2 kg/m ²



One-component liquid coating formulated with water-based resins. Can be used as a multi-purpose walkable coating, and as the walkable protective coating above Newton 114 Acriflex. Suitable for cycle paths, pedestrian areas and as a non-slip coating. Resistant to weather, changes in temperature, UV-rays and wear.

- Easy application
- High elasticity
- No maintenance required

* Red, green, grey and sand available on request



NEWTON 703 FLOORGUM TYRE

Multi-purpose, low-thickness coating suitable for both internal and external environments

CODE	PACKAGING	COLOUR	APPLICATION RATE
FGT	25kg	Black*	1.0 kg/m ²

One-component synthetic coating used above Newton 103-S and Newton 114 Acriflex where the deck will be subject to vehicle traffic, high impact or high abrasion. Water-based product formulated with innovative resins to obtain a low-thickness coat, easy to apply, with non-slip properties and high abrasion resistance. Suitable for both internal and external environments.

Suitable to create driveway areas subjected even to heavy vehicle transit such as:

- Garages
- Parking areas
- Balconies

*Red, green and grey available on request



708 AQUAFLOOR

Clear polyurethane coating

CODE	PACKAGING	COLOUR	APPLICATION RATE
708	5kg	Transparent	0.10 - 0.20 kg/m ² depending on the absorbency of the substrate

Newton 708 AquaFloor is a clear, two-component, polyurethane coating that provides a tough and durable, transparent finish to a number of Newton products such as Newton 701-HB, Newton 702 Floorgum Paint and Newton 703 Floorgum Tyre. It can also be used as the final wearing coat where sand has been fully broadcast to liquid waterproofing membranes where a wearing finish is required, such as access walkways across roofs.

- Extremely durable and hard-wearing
- Prevents scuffing and marking of slip-resistant coatings
- Eases the surface cleaning



Newton System 800 | Damp Proofing

Newton System 800 is a range of BBA approved damp proof membranes and ancillaries, which are quick and clean to install and offer a permanent solution for damp proofing above-ground walls.



NEWTON 803

Non-meshed damp proofing membrane

CODE	SIZE	COLOUR	AREA
M19 & M20	Roll: 1.0m x 10m & 2.0m x 20m	White/Translucent	10 & 40m ²

Newton 803 is a high quality damp proofing membrane for use above the ground as an alternative to Newton 803 Newtonite and Newton 805 Newlath where a meshed surface is not required as a surface for direct plastering or rendering, and in order to isolate the wall finish from the damp wall.

- Newton 803 holds BBA certification (94/3010)



NEWTON 803 NEWTONITE

Meshed damp proofing membrane

CODE	SIZE	COLOUR	AREA
M16, M21 & M22	Roll: 1m x 10m, 1m x 20m & 2m x 20m	White/Translucent	10, 20 & 40m ²

Newton 803 Newtonite is a composite damp proofing membrane, comprising of high density polyethylene membrane with a rot-proof polythene mesh that is heat-welded during the manufacturing process to the surface of one side. The meshed surface creates a mechanical key to allow the membrane to be plastered, rendered or to receive dot & dab plasterboard.

- As a damp proof base for renders, plasters or dot & dab plasterboard
- As a damp proofing system to deal with rising damp
- Newton 803 Newtonite holds BBA certification (94/3010)



NEWTON 805 NEWLATH

Damp proofing membrane & plaster base

CODE	SIZE	COLOUR	AREA
M8, M9 & M10	Roll: 1.5 x 5m, 1.5 x 10m & 2 x 20m	White/Translucent	7.5, 15 & 40m ²



Newton 805 Newlath is a composite damp proofing membrane comprising of high-density polypropylene membrane with a rot-proof polythene mesh that is heat-welded during the manufacturing process to the surface of one side. The meshed surface creates a mechanical key to allow the membrane to be plastered, rendered or to receive dot & dab plasterboard. Newton 805 Newlath is for use in non earth-retaining structures.

- As a damp proof base for renders, plasters or dot & dab plasterboard
- As a damp proofing system to deal with rising damp

NEWTON 806 CWC

Thermal paint

CODE	PACKAGING	COLOUR	AREA
CWC	5L	White	0.5 - 0.7l/m ²



Newton 806 CWC is a white thermal coating for cold and poorly insulated surfaces. It contains specific mineral powders which, thanks to their insulating features, raise the surface temperature of the treated wall by up to 4°C and so reduces the incidence of surface condensation.

Newton 806 CWC is applicable to cold internal surfaces affected by condensation and subject to the formation of black mould.



NEWTON 807 BKK ECO

Water repellent treatment for exposed walls

CODE	PACKAGING	COLOUR	AREA
BKK	5L	Clear	Dependent on use



Newton 807 BKK *eco* is a transparent, colourless wall coating, water and siloxane based, ideal to protect porous walls of various substrates from wind-driven rain. After treatment, the wall is deeply impervious to water ingress and so better protected against frost damage. The treated wall will continue to dry and vapour drive is not affected due to the coating being very vapour permeable. The treated wall is both drier and warmer, increasing the thermal efficiency of the wall and lowering the risk of internal condensation.

- Prevents wind-driven rain ingress to north facing or exposed elevations
- Water repellent treatment of walls and exposed bricks, natural stone, sand/cement render and lime rendered walls



ANCILLARIES

MEMBRANE	FIXING PLUG	JOINTING TAPE	SEALING DRILLED HOLE	PLASTER STOP	REPAIRS
803	MultiPlug	Newton Overtape	Not Required	Not required	Newton Overtape
803 Newtonite	800 Mesh Plug	Newton Mesh Tape	Newton 800 Mastic	Newton 800 Profile	Newton Mesh Tape
805 Newlath	800 Mesh Plug	Newton Mesh Tape	Newton 800 Mastic	Newton 800 Profile	Newton Mesh Tape

NEWTON 800 MESH PLUGS

CODE	SIZE	COLOUR	QUANTITY PER BAG
A16	7mm x 50mm	Red	250
A20	7mm x 50mm	Blue	160

The fixing plug for fixing Newton 805 Newlath and 803 Newtonite to walls. Use a 7mm SDS drill bit to drill through membrane and substrate, prior to hammering home the fixing plug.

7mm SDS drill bits are available under product code DB1.

Newton 800 Mesh Plugs should be used to secure System 800 membranes in above ground applications only.



NEWTON COB PLUGS

CODE	SIZE	QUANTITY PER BAG
A17	10mm x 90mm	50

For fixing System 800 membranes to less stable substrates. The supplied pin expands the plug to gain better traction.

10mm SDS drill bits are used with the plug and are available under product code DB2.

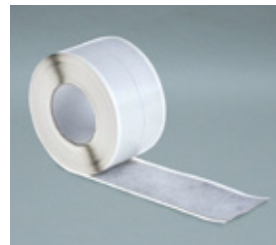
Newton Cob Plugs should be used to secure System 800 membranes in above ground applications only.



NEWTON MESH TAPE

CODE	SIZE	UNIT OF SALE
A25	100mm x 10m	Single Units

Newton Mesh Tape is used over the butted joints of the adjoining pieces of System 800 meshed membranes. The tape has a textured surface that is an excellent 'key' for plasters and renders.



NEWTON MULTIPLUG

CODE	SIZE	QUANTITY PER BAG
A1	10mm x 57mm	100

The fixing plug for securing Newton 803 to the wall and for providing the capability for items to be fixed to the wall with 5mm screws, without damage to the membrane.

10mm SDS drill bits are used with the plug and are available under product code DB2.



NEWTON 801 MASTIC SEALANT

CODE	UNIT OF SALE
A18	0.31 litre tube

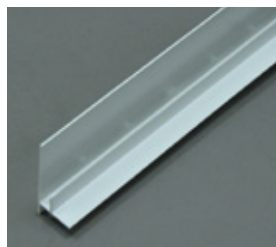
Mastic is applied around the hole drilled into the meshed membranes of System 800, prior to the fixing plug being hammered home, which prevents bridging of dampness from the wall to the internal finishes.



NEWTON PROFILE

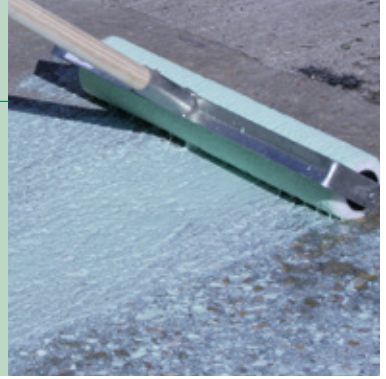
CODE	SIZE
A19	2m lengths

Newton Profile is used with Newton 803 Newtonite and Newton 805 Newlath and serves as a plaster stop, guaranteeing that the plaster/render will stop short of the floor.



Newton System 900 | Primers, Preparation and Reinforcement

A full range of liquid-applied primers, reinforcement tapes and surface repair mastics which are used to prepare substrates and construction joints prior to waterproofing with System 100 and 700 liquid membranes and coatings.



NEWTON 903-P

Primer for Newton 103-S and Newton 107F

CODE	PACKAGING	COLOUR	APPLICATION RATE
903-P	5L	Pale Green	Dependent on concrete porosity



Newton 903-P is a modified styrene/acrylic copolymer primer for concrete that is applied prior to the installation of Newton 103-S and 107F cementitious waterproofing membranes, levelling compounds, concrete repair and floor coating products, minimising the risk of out-gassing from both internal and external concrete substrates. It is recommended prior to the application of Newton 903-P for the concrete substrate to be mechanically prepared and all laitance removed.

- Can be applied to damp concrete
- Extremely quick to apply
- Fast-curing enables the waterproofing coat to be applied within 1 hour dependent upon temperature and site conditions



NEWTON 904-RT

Adhesive reinforcement tape for external corners of Newton 410 GeoDrain

CODE	SIZE	COLOUR	DENSITY
904-RT	10m x 0.15m	White	42g/m ²

Newton 904-RT is a self-adhesive, spun-bond, polypropylene reinforcement tape used to provide continuation of the outer textile layer of Newton 410 GeoDrain at external corners.



NEWTON 906 LIME INHIBITOR

Treatment of concrete surfaces for System 500

CODE	PACKAGING	COLOUR	APPLICATION RATE
LC1	1L	White	100m ² per litre

Newton 906 Lime Inhibitor is applied to concrete surfaces prior to the installation of a Newton System 500 cavity drain membrane waterproofing system, to prevent the 'leaching' of free lime from the concrete. Primarily designed to be used on new concrete structures, Newton 906 Lime Inhibitor should also be used to treat cut recesses in existing concrete slabs.

- Supplied non-diluted and is mixed on site with 9 litres of water
- Very fast application by low-pressure backpack-type sprayer



NEWTON 908 LIQUABOND

Acrylic bonding agent & admixture

CODE	PACKAGING	COLOUR	APPLICATION RATE
LB	5L & 25L	Clear	Dependent on use

Newton 908 LiquaBond is a formulated acrylic admixture used both as a primer for wet-to-dry cementitious systems, where bond is increased significantly, and as a high performance admixture which waterproofs cement-based mixes, as well as greatly increasing the adhesion of the product to the substrate.

- As a primer to increase the adhesion of Newton 101F to concrete substrates
- As a primer to increase the adhesion of render to Newton 101F
- As an admixture to create bonded screeds



NEWTON 912-RT

Non-woven reinforcement tape for liquid waterproofing membranes

CODE	SIZE	COLOUR	DENSITY
912-RT	150mm x 50m	White	30g/m ²

Newton 912-RT is a spun-bond, polypropylene reinforcement tape used with Newton liquid-applied membranes and coatings to reinforce changes in direction and over cracks, static construction and day joints. The tape can also be used with flexible membranes such as Newton 107F over covered joints where slight movement is expected.

- Reinforcement of changes in direction for tanking and deck waterproofing membranes
- Formation of covered movement joints
- Reinforcing liquid membranes over static construction joints



NEWTON 914-RT

Non-woven reinforcement tape for Newton 108 Hydrobond-LM & 109-LM

CODE	SIZE	COLOUR	DENSITY
914-RT	150mm x 100m	White	100g/m ²

Newton 914-RT is a non-woven polypropylene reinforcement tape used with Newton 108 HydroBond-LM and Newton 109-LM liquid-applied membranes to reinforce detailing around protrusions such as service pipes and over static construction, day, and covered movement joints.

Used with Newton 108 HydroBond-LM and Newton 109-LM for the:

- Formation of covered movement joints
- Detailing around protrusions through the membrane
- Reinforcing static construction joints



NEWTON 915-RL

Meshed reinforcement layer for liquid-applied membranes

CODE	SIZE	COLOUR	AREA
915-RL	10m x 1.0m	White	10m ²

Glass fibre mesh reinforcing layer for Newton cementitious/acrylic liquid waterproofing membranes.



Pumps, Pumping Systems and Ancillaries

Extensive range of submersible pumps and pumping ancillaries for controlling clean groundwater, grey water, effluent or sewage in basements.



NEWTON CP250, CP400 & CP750

A range of high quality clean water pumps

CODE	SIZE	DISCHARGE	MOTOR SIZE
CP250, CP400 & CP750	Various	1½", 2" & 2"	250W, 400W & 750W

The Newton CP250, CP400 and CP750 are a range of high quality clean water pumps, ideally suited for the removal of groundwater from basements and cellars. The unique vertical operation float switch ensures that the pumps operate within their footprint, removing the possibility of the float snagging during operation and allowing the pumps to be used within smaller sumps. The vertical float switch is also very flexible, allowing the pump switching height to be adjusted between the 'on' and 'off' positions, as well as the height relative to the pump.

Newton CP Pumps hold a 1 year back to base manufacturers warranty. If installed and maintained by a Newton approved installer, the back to base warranty increases to 3 years.



NEWTON NP400

Clean water pump

CODE	SIZE	DISCHARGE	MOTOR SIZE
P2 & P3	241mm x 185mm x 328mm	2"	400W

The Newton NP400 is a high head and high to medium performance pump. The NP400 is available as an automatic pump (as shown), or as a manual pump for use with our pump control systems. The automatic version is also fitted with a vertical operation float switch, ensuring that the pump operates within its footprint, removing the possibility of the float snagging during operation and allowing the pump to be used within smaller sumps. The vertical float switch is also very flexible, allowing the pump switching height to be adjusted between the 'on' and 'off' positions, as well as the height relative to the pump.

Newton NP Pumps hold a 3 year back to base manufacturers warranty. If installed and maintained by a Newton approved installer, the back to base warranty increases to 5 years.



Pumps, Pumping Systems and Ancillaries

NEWTON NP400PP

Puddle pump

CODE	SIZE	DISCHARGE	MOTOR SIZE
P13	196mm x 196mm x 316mm	2"	400W

The Newton NP400PP is a 400 watt puddle pump designed for pumping water down to very low levels. Capable of pumping down to 1mm, the Newton NP400PP can be purchased as a manual pump, as shown here, or can be purchased with low level switching capability as part of the Newton NP400LLPS below.



NEWTON NP400LLPS

Low level pumping system

CODE	SIZE	DISCHARGE	MOTOR SIZE
SP1	N/A	2"	400W (pump)

The Newton NP400LLPS has a small control panel and low level switching module added to the Newton NP400PP puddle pump that will give accurate and safe switching of water levels of just 10mm.



NEWTON NP400W

Medium head and medium performance pump

CODE	SIZE	DISCHARGE	MOTOR SIZE
P4	236mm x 173mm x 374mm	2"	400W

The Newton NP400W is a medium head and medium performance pump specifically placed within the Newton pumping range for when dishwasher, washing machine or bath/shower waste is to be removed from the sump. The Newton NP400W is an automatic pump with a specially designed adjustable float arrangement that cannot be fouled by hardened soaps etc.



NEWTON NP750

High performance clean water pump

CODE	SIZE	DISCHARGE	MOTOR SIZE
P5 & P6	236mm x 173mm x 380mm	2"	750W

The Newton NP750 is a high performance clean water pump. The Newton NP750 is available as an automatic pump with vertical float switch or as a manual pump for use with our pump control systems. The Newton NP750 is available as pump only, or as a key component in our Newton Titan-Pro packaged pump systems.



NEWTON NP750W

High performance waste water pump

CODE	SIZE	DISCHARGE	MOTOR SIZE
P8	236mm x 173mm x 394mm	2"	750W

The Newton NP750W is a high head and high performance effluent pump for the removal of waste water from the Newton Titan-Pro sump chambers or formed concrete chambers. The Newton NP750W is an automatic pump with a specially designed adjustable float arrangement that cannot be fouled by hardened soaps, effluent and grease etc.



NEWTON SP750 CUTTER

Sewage pump

CODE	SIZE	DISCHARGE	MOTOR SIZE
P35 & P36	255mm x 190mm x 450mm	2"	750W

The Newton SP750 Cutter is a high quality sewage pump, incorporating a tungsten carbide tipped cutting impeller that rotates against a serrated suction cover in order to cut solid waste before pumping, resulting in a much lower risk of blockage than similar sized vortex impeller pumps.



Pumps, Pumping Systems and Ancillaries

NEWTON TITAN-PRO WHITE

Pumping system for Newton System 500

CODE	SIZE	COLOUR
TPW	600mm x 805mm	White

The Newton Titan-Pro White packaged sump system is designed specifically to be used with Newton System 500. The adjustable neck allows for the sump to be installed at a fixed height relative to the slab so that the connection in from the Newton drainage system and the pump discharge line are made above the concrete and always at the same height relative to the slab.



NEWTON TITAN-2 PUMPING SYSTEM

Low level pumping system

CODE	SIZE	COLOUR
T21-T30	485mm x 545mm	Black

The Newton Titan-2 is a basic pumping system incorporating an octagonal sump chamber, class-leading pumps, a lock & seal lid and frame, a Newton High Water Level Alarm, internal pipework, one-way valves, and a shut-off valve for quick release of the pumps for servicing.



NEWTON TROJAN PUMPING SYSTEM

Multi-use pumping system

CODE	SIZE	COLOUR
TR13 - TR49	610mm x 1000/1500mm	Black

The Newton Trojan is a specialist pumping system suitable for a variety of pumping tasks, ranging from the lifting of sewage from basements to a higher level sewage system, to the removal of groundwater and surface drainage. The sump is available in depths of 1m and 1.5m.



VICTRON INVERTER RANGE

Advanced battery back-up systems

NAME	CODE	SIZE	COLOUR
Multiplus 12/800/35	BB1	375 x 214 x 110mm	Blue - RAL 5012
Multiplus 12/1200/50	BB2	375 x 214 x 110mm	Blue - RAL 5012
Multiplus 12/3000/120	BB3	362 x 258 x 218mm	Blue - RAL 5012
Quattro 12/3000/120	BB4	362 x 258 x 218mm	Blue - RAL 5012

The Victron range of pure sine wave Inverters/Chargers provide advanced solutions to ensure that Newton pumping systems continue pumping during power interruption, by inverting 12V DC power from a battery (or multiple batteries) to clean and efficient 230V power. The battery back-up range includes 4 specifically sized Inverter/Charger units, plus a number of ancillaries to provide advanced system control and telemetry. For the ultimate in battery back-up protection, the top-of-the-range Quattro unit is mated with a generator that recharges the batteries once they reach a predetermined state of depletion to give unequalled protection against power outage.



VICTRON BLUE POWER PANEL

Intuitive control and monitoring panel for the Victron Inverter system

CODE	SIZE	COLOUR
BB6	120mm x 130mm	Grey & Blue

The Victron Blue Power Panel provides control and monitoring of the Victron Inverter/Charger. Features include on/off control of Victron MultiPlus and Quattro Inverter/Charger units and graphic illustration of system charge/discharge, capacity in % real time and time to go until discharged.



VICTRON COLOUR CONTROL PANEL

Intuitive control and monitoring panel for the Victron Inverter system

CODE	SIZE	COLOUR
BB7	130mm x 120mm x 28mm	Blue

The Victron Colour Control Panel adds a number of extra features over the Victron Blue Power Panel such as Ethernet or Sim Card internet capability with remote monitoring via web portal and Data storage on SD card.



Pumps, Pumping Systems and Ancillaries

VICTRON BATTERY MONITOR

Sophisticated battery monitoring tool for pump engineers

CODE	SIZE	COLOUR
BB26	63mm Ø	Grey/Blue

The Victron Battery Monitor provides real time information for the battery or bank of multiple batteries. The system gives pump engineers a wide variety of up-to-date and historical data on the performance of the Newton system. The battery monitor is flush mounted and can be housed in a 69mm x 69mm front bezel.

The battery monitor will measure:

- Battery voltage
- Discharge current
- Capacity as a %



NEWTON CONTROL PANEL-PRO

Multi-function pump control and monitoring panel

CODE	SIZE	WEIGHT	POWER SUPPLY
CP2 & CP7	290mm x 240mm x 94mm or 17mm if recessed into wall	3.94kg	2 x 230VAC: 1 x mains 1 x battery back-up

The Newton Control Panel-Pro is a class-leading pump control panel with many unique features, which has been designed by Newton Waterproofing Systems to provide the ultimate in pump operation and diagnostics. The panel features interfaces for use with Newton battery back-up and telemetry systems as well as connections to whole house alarm and monitoring systems. The Newton Control Panel-Pro's PCB is split, with two separate circuits, ensuring that pumping will continue, even if one of the control circuits should fail. This effectively means that the Newton Control Panel-Pro is two control panels within one case, offering unrivalled redundancy.



NEWTON PUMP CONTROLLER

Twin pump controller with alarm

CODE	SIZE	COLOUR	POWER SUPPLY
CP9	300mm x 194mm x 58mm	Blue	230VAC

The Newton Pump Controller is designed to be used with matched pairs of Newton CP250, CP400, NP400 & NP750 manual pumps.

Key benefits include:

- Independent power supply input
- Automatic pump duty assist
- Automatic testing of each pump every seven days
- Internal digital pump counter
- 9V battery backup
- Alarm sounder with mute function



NEWTON HIGH WATER LEVEL ALARM

Detects high water levels within pump chambers

CODE	SIZE	WEIGHT	POWER SUPPLY
PA50	152mm x 92mm x 37mm (8mm if mounted in back box)	700g	9V DC - PP3 battery (supplied)



The Newton High Level Water Alarm is designed to detect high water levels within pump sump chambers, and is included within Newton Titan-Pro and Newton Titan-2 pumping systems. The alarm is battery operated and uses a standard 9V PP3 battery.

NEWTON DIALER

Provides enhanced alarm capability

CODE	SIZE	WEIGHT	POWER SUPPLY
PA5	140mm x 115mm x 30mm	360g	12V DC - Battery lead (PA6) or Mains adaptor (PA7) to be ordered separately



The Newton Dialer provides enhanced alarm capability to our PA50/CP9/CP2 controllers as part of a Newton Pumping System. The Newton Dialer will contact up to 8 persons by text or speech (or both simultaneously) via the standard BT Telephone line to warn of an alarm condition. The PA5 pre-programmed dialer requires a power source, which can be either the PA6 (a battery connection for the dialer when used with a CP2) or the PA7 (a 12V power pack for when the dialer is used with the PA50 or CP9).

NEWTON NORTHSTAR BATTERIES

For use with Victron Inverters

CODE	SIZE	WEIGHT	AMP HOURS
BB20	287mm x 108mm x 263mm	21kg	59Ah - 12V DC
BB21	396mm x 108mm x 287mm	33kg	99Ah - 12V DC
BB22	560mm x 125mm x 320mm	60kg	191Ah - 12V DC



The Newton NorthStar Battery range uses pure lead thin plates for reliable performance and a long float life when providing battery backup protection for Newton pumping systems. The NorthStar range is provided in three Amp hour classes to give specifiers a choice on what level of battery protection they require. All NorthStar batteries have been tested with our NP and CP range pumps to give our customers real performance data in live pumping situations.

NEWTON CONDENSATE PUMP

High level inhibitor

CODE	SIZE	OUTLET	WATTAGE
BCP20	125mm x 250mm x 120mm	10mm	60W

The BCP20 Newton Condensate Pump is designed to collect and remove condensation from air conditioning systems, boiler systems, condensing furnaces, dehumidifiers, drinks machines, water coolers etc. It is virtually maintenance free. Constructed in durable ABS plastic, it is resistant to acidic condensation and is capable of handling high temperature liquids.

- Avoids having to drain the condensate to the waterproofing pumping system
- Surface mounted, quick and easy to install
- Suitable for aggressive and hot water



NEWTON uPVC PIPEWORK

For use with Newton pumping systems

CODE	SIZE	COLOUR	PRESSURE RATING
PP1 - PP99	50/63mm & 2"	Grey	PN16

Newton stock an extensive range of uPVC pipework, valves, clips and glue for use with our pumping systems.



NEWTON SEWAGE SYSTEM

1m diameter sewage system

CODE	SIZE	PIPEWORK	DISCHARGE
SS1 - SS7	1.1 - 4m deep twin NP750 cutters pumps on rails with panel	2"	63mm
SS8 - SS13	1.5 - 4m deep twin Titan 20/70's on rails with panel	3"	90mm

Range of sewage pumping systems of various sizes, large enough to give 24 hours of storage as required by Part H of building regulations. The pumping systems are available with two pump types: SS1 – SS7, which are supplied with the Newton SP750 Cutter Pump, and SS8-SS13, which are supplied with more powerful 3" City/Pedrollo pumps. In all cases the systems are supplied with pumps on guide rails for easy removal, 7.5 tonnes frame and lid, control panel with multiple floats and easy to fit wall flanges for invert pipes.



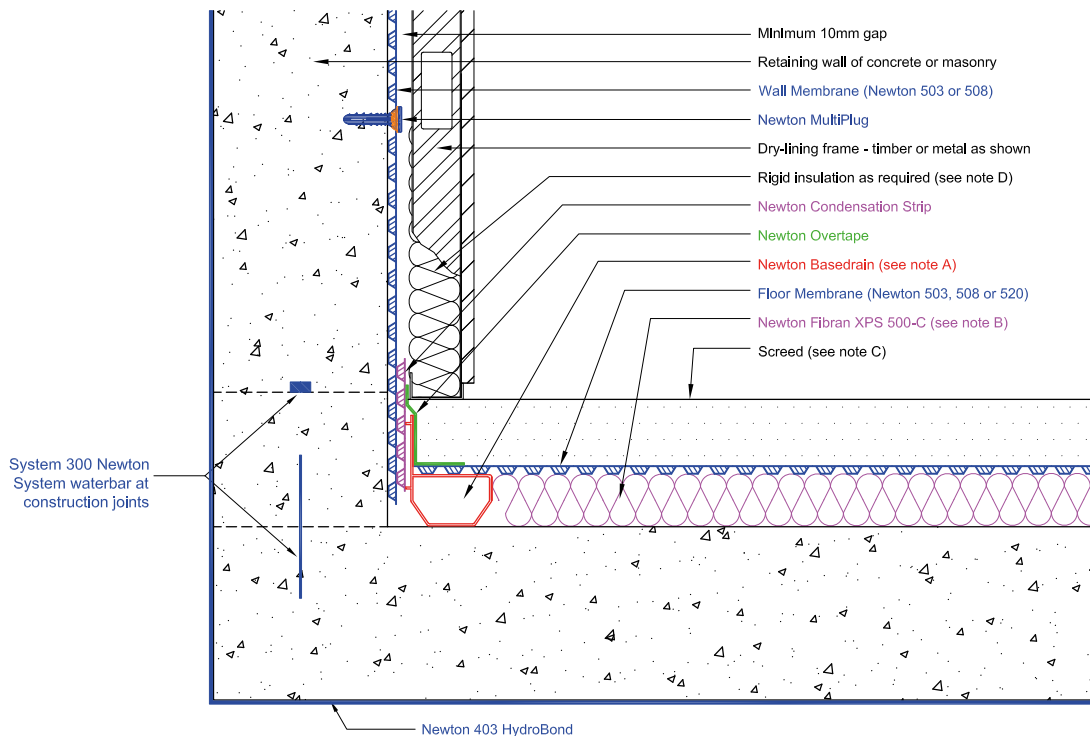
HERE TO HELP

Newton Waterproofing Systems provide a range of specifier services to aid in the correct specification of our products.

- In-house CAD design service
- Technical drawings supplied in .dwg (AutoCad) and .pdf (Acrobat)
- BIM objects for insertion into your project
- NBS Create and NBS Building used in-house to produce bespoke specifications tailored to your project
- 3D sections, details and product representation to assist in visualising the concept
- Drawings available on FastrackCAD
- Product information listed on NBS Plus
- Members of IHS where all our specification information is available
- RIBA Approved CPD, offering specifiers and designers double-points CPD seminars at their premises or via the members area of our website
- Product data sheets and MSDS available on the website



AUTODESK
 AUTOCAD



Typical Detail: Combined Newton Waterproofing Systems applied to a new-build concrete structure

Case Studies

EXISTING BASEMENT WATERPROOFING TO BS 8102:2009

Newton's market-leading System 500 basement waterproofing solution is ideal for waterproofing existing basements and cellars. Newton System 500 incorporates a range of BBA approved cavity drain membranes for walls and floors, drainage provision, and sumps and pumps.

Newton System 500 complies with recommendations within the BS 8102:2009 'Code of Practice for the Protection of Below Ground Structures Against Water from the Ground' that the waterproofing solution is fully maintainable and serviceable. The system works by placing designed and maintainable depressurisation voids at known weaknesses in the structure, so that problem water is simply captured and diverted out of the property.

Newton System 500 is ideal for application to listed and historic buildings as it is deemed 'reversible' - a requirement of conservation authorities.



Newton System 500 has been installed in the Grade I Listed Royal Courts of Justice, London

NEW-BUILD BASEMENT WATERPROOFING TO BS 8102:2009

Newton Waterproofing Systems provide solutions for all aspects of structural waterproofing, from the waterbars within the construction joints to the sealing of the deck above. Systems can be used in isolation or can be combined as recommended by BS 8102:2009 to give greater assurance of waterproofing performance. BS 8102:2009 defines three types of waterproofing and Newton Systems are available for all:

Type A barrier protection: Newton System 100, Newton 403 HydroBond

Type B structurally integral protection: Newton System 300

Type C drained protection: Newton System 500

Combination system can be provided for Type A/Type B, Type A/Type C, Type B /Type C, and Type A/Type B/Type C.



Newton 403 HydroBond was used to waterproof this extensive housing development in Surrey

CASE STUDY: WATERPROOFING THE HOUSES OF PARLIAMENT

Newton Waterproofing were recently involved in the design and installation of a waterproofing solution for the Houses of Parliament, a landmark that has dominated London's skyline for over 150 years.

This complex project required the design and installation of an external waterproofing system and an internal cavity drain system. The solution was installed by a Newton Specialist Basement Contractor and they provided specific waterproofing professional indemnity insurance for the project.

Externally, Newton's innovative Newton 403 HydroBond membrane was applied extensively to ensure the necessary waterproofing around the basement, whilst internally, Newton 508 and Newton 520 membranes were both applied from floor to ceiling as part of Newton's complete System 500 cavity drainage solution.



Newton System 500 and Newton 403 HydroBond were applied to the Houses of Parliament, London

CASE STUDY: WATERPROOFING A NEW HOUSING DEVELOPMENT

Newton 403 HydroBond was applied to the Crest Nicholson Park Avenue development in Sunbury-on-Thames, a combination of 193 apartments and spacious executive homes on the site of the old training grounds for London Irish Rugby club. Newton 403 HydroBond was used in order provide a complete waterproof envelope to the structure, and to provide a Type A (barrier) waterproofing solution suitable for Grades 1, 2 and 3 as defined by BS 8102:2009.

Newton 403 HydroBond is a very high performance composite sheet membrane that features a locking fleece to one side and a polymer hydrophilic coating to the other. When placed below the new raft or against the wall shuttering, the poured concrete engages into the locking fleece so that the membrane is completely locked in and monolithic to the concrete. This ensures that if a leak did occur it cannot track to the construction joints.



Newton 403 HydroBond was applied to a large-scale Crest Nicholson housing development

CASE STUDY: WATERPROOFING THE HOTEL FOOTBALL

The "Hotel Football" is an innovative hotel concept on the doorstep of Old Trafford football stadium, home of Manchester United. The 138-bed, 10-storey hotel features a five-a-side football pitch on the roof, a supporters' club, and has capacity for around 1,500 fans on match days.

A Newton Specialist Basement Contractor was commissioned to design and install a waterproofing solution throughout the new structure. The Newton System 500 range of cavity drain membranes, drainage and pumps were applied internally, and multiple Newton products were applied externally to offer an extensive combined waterproofing solution for ultimate protection against water ingress.



Multiple Newton products were installed in combination to protect the Hotel Football against water ingress

NEWTON SPECIALIST BASEMENT CONTRACTORS (NSBC)

Newton Specialist Basement Contractors are a nationwide group of professional waterproofing and damp proofing contractors who provide the best products, design and installation available in all aspects of basement waterproofing and damp proofing.

NSBCs can offer peace of mind to the designer and the client by taking full design liability on the project, and in addition they can offer PI (Professional Indemnity) on waterproofing design and independent insured guarantees for the installation. They are regularly trained and assessed by Newton Waterproofing Systems and adhere to very strict criteria.

For a list of Newton Specialist Basement Contractors in your area, please contact Newton Waterproofing Systems.

For many more case studies, please visit www.newtonwaterproofing.co.uk



Newton Specialist Basement Contractors offer guaranteed waterproofing solutions

Combined Waterproofing

BS 8102:2009 AND COMBINATION WATERPROOFING SYSTEMS

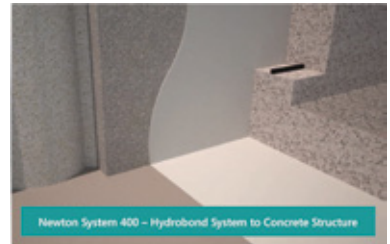
The British Standard 8102:2009 'Code of Practice for the Protection of Structures Against Water from the Ground' is the benchmark by which all below ground waterproofing projects in the UK are judged. Within the standard, one significant recommendation is that waterproofing designers always consider a combination of waterproofing systems for structures where the likelihood of leakage is high or the consequences of leakage are unacceptable.

WHAT IS COMBINED WATERPROOFING?

When looking at combining waterproofing, there are three clear waterproofing categories that are defined by BS 8102:2009. Combined waterproofing is therefore the effective implementation of two or more of the following Types:

TYPE A – BARRIER PROTECTION

The structure has no integral protection against water and relies on an internal or external membrane to prevent water ingress. Such membranes are included in Newton's System 100 Liquid Waterproofing Membranes, and System 400 External Waterproofing and Drainage Membranes.



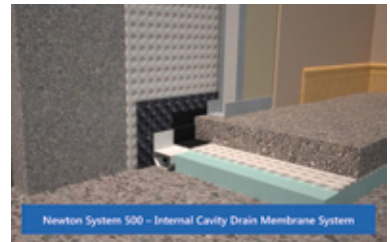
TYPE B – INTEGRAL PROTECTION

The structure is designed to be integrally waterproof and the primary resistance against water. Such structures will be of high grade concrete and, in addition, employ Newton's System 300 Waterbars, Waterstops and Waterplugs to waterproof the key construction and movement joints.



TYPE C – DRAINED PROTECTION

It is accepted that water could enter the building and, therefore, a Newton System 500 Cavity Drain Waterproofing solution is used to depressurise incoming water and harmlessly manage it away from the structure, either via gravity to open elevations or by mechanical means.



With this in mind the possible combinations of waterproofing are Type A, B & C, Type A & B, Type A & C or Type B & C. Usually a combination of two forms of waterproofing is adequate when designing a habitable space requiring a completely dry internal environment, defined as 'Grade 3' within BS 8102:2009. Whichever combination of waterproofing is chosen to achieve the Grade 3 environment, in most cases the safest combination will include a Type C internal cavity drain membrane system as one of the forms of waterproofing. The choice of the other system is largely dictated by the type of structure.

THE ROLE OF THE WATERPROOFING DESIGN SPECIALIST

As well as the effective combination of Type A, B and C systems, the British Standard strongly recommends that a 'Waterproofing Specialist' be included as an integral part of the design team from the earliest possible stage, to ensure that an integrated waterproofing solution is fully realised.

Newton's network of Specialist Basement Contractors are therefore fully trained and qualified to the elite standard required in order to fulfil the Waterproofing Specialist role. Offering insured guarantees for installation and full professional indemnity on designs, our NSBCs are able to provide solutions regardless of the severity of the risk, complexity of the project, or clients' exacting expectations.



*For many more case studies, please visit www.newtonwaterproofing.co.uk
For further information, free technical advice or additional copies of this directory
please ring 01732 360 095 or e-mail info@newtonwaterproofing.co.uk*



PROTECTING BUILDINGS SINCE 1848

Newton Waterproofing Systems is the UK's leading independent supplier of complete structural waterproofing systems.

We offer an extensive range of solutions for waterproofing and damp proofing any commercial or domestic structure, from tunnels, vaults, basements and cellars to the largest civil engineering projects.

Our technical experts can design and modify your technical drawings, in order to create a bespoke waterproofing solution best suited to your project. Newton's range of waterproofing systems, including cementitious products, cavity drain membranes and concrete waterproofing products will provide a complete envelope of Type A, B and C structural protection, as defined by BS 8102:2009.

Our nationwide network of Newton Specialist Basement Contractors (NSBCs) are fully trained in the installation of Newton products, and will provide a fully guaranteed design and installation of our systems. Please contact us directly for a list of NSBCs in your area.



ISO 9001
ISO 14001
CHAS 18001



UK Office:



Newton Waterproofing Systems
Newton House,
17-19 Sovereign Way,
Tonbridge, Kent TN9 1RH
United Kingdom

T. +44 (0)1732 360 095
E. info@newtonwaterproofing.co.uk
W. www.newtonwaterproofing.co.uk

Australia Office:



Bayset Pty Ltd
Unit 1,
76 Postle St Coopers Plains,
Queensland
Australia 4108

T. + 61 7 3722 3822
E. info@bayset.com.au
W. www.bayset.com.au

New Zealand Office:



Newton Systems
38C Hannigan Drive,
Mt. Wellington,
Auckland 1072

T. + 64 800 639 866
E. info@newtonsystems.co.nz
W. www.newtonsystems.co.nz



Like us



Tweet us

@NewtonWPSystems



Watch us



Connect with us

JN **NEWTON**
WATERPROOFING