

Rev 2.0 - 12 October 2017

INTRODUCTION

This data sheet is home to the products that do not require their own data sheet but are nonetheless critically important for the correct installation of Newton System 800. Many of them are used with other Newton Systems and they will also be included within the ancillary data sheet where this occurs.

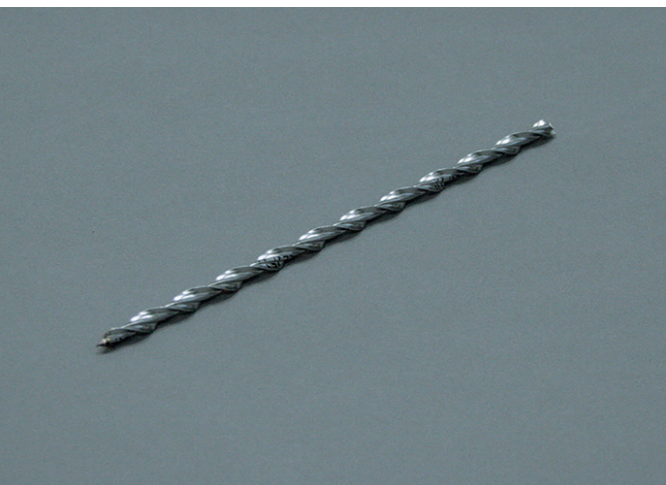
NEWTON MULTIPLUG (A1/A32)

The fixing plug for securing Newton 803 to the wall and for providing the capability for items to be fixed to the wall with 5 mm screws without damage to the membrane.



NEWTON HELIFIX WALL TIES (WT 155, 170, 195, 220, 245, 270, 295, 325)

A range of wall ties that are designed to be used with the Newton MultiPlug. They are supplied with a special hand tool* (WTT) that ensures they are hammered into the MultiPlug without bending the tie and to the correct depth within the plug.



NEWTON 800 MESH PLUGS (A16)

The fixing plug for fixing Newton 805 Newlath to walls. Use a 7 mm SDS drill bit to drill through membrane and substrate prior to hammering home the fixing plug.



NEWTON 800 NEWTONITE PLUGS (A20)

The same plug as the Newton 800 Mesh plug, but in blue to match the colour and supplied in smaller packs to match the size of Newton 803 Newtonite.



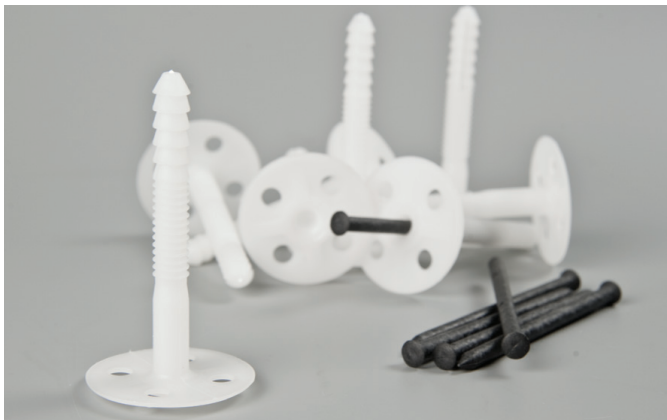
*additional cost

NEWTON SYSTEM 800

Ancillaries

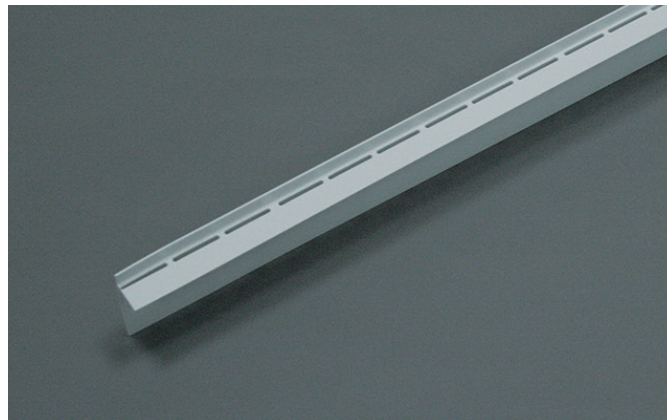
NEWTON COB PLUGS (A17)

For fixing System 800 membranes to less stable substrates. The supplied pin expands the plug to gain better traction.



NEWTON 800 PROFILE (A19)

Newton Profile is used with 803 Newtonite and 805 Newlath and serves as a plaster stop, guaranteeing that the plaster/render will stop short of the floor.



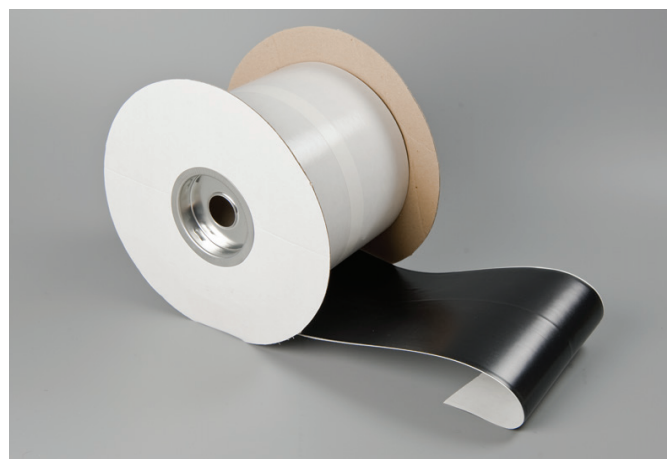
NEWTON 801 MASTIC SEALANT (A18)

Mastic is applied around the hole drilled into the meshed membranes of System 800 prior to the fixing plug being hammered home, which prevents bridging of dampness from the wall-to-the wall finishes.



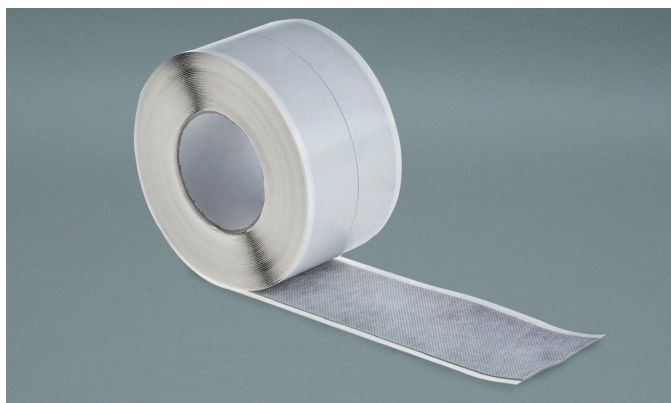
NEWTON OVERTAPE (A7, A8, A9)

A single-sided butyl tape that is used over joints to Newton 803



NEWTON MESH TAPE (A25)

Mesh Tape is used over the butted joints of the adjoining pieces of System 800 meshed membranes. The tape has a textured surface that is an excellent 'key' for plasters and renders.



NEWTON SDS DRILL BIT - (DB1 & DB2)

SDS Drill Bits for Newton fixing plugs:

7 mm diameter for Newton MultiPlug - Code DB1

10 mm diameter for Newton MultiPlug - Code DB2



NEWTON SYSTEM 800

Ancillaries

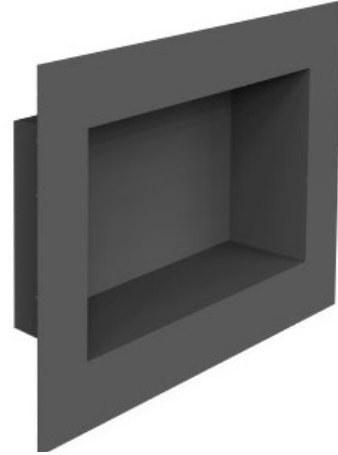
NEWTON BACK-BOX LINER - SINGLE BOX (BX1)

Waterproof lining for single sized, electrical pattress boxes. Seal to the wall membrane with Newton Waterseal Tape. Over seal with Newton Overtape or with Newton Mesh Tape to meshed membranes.



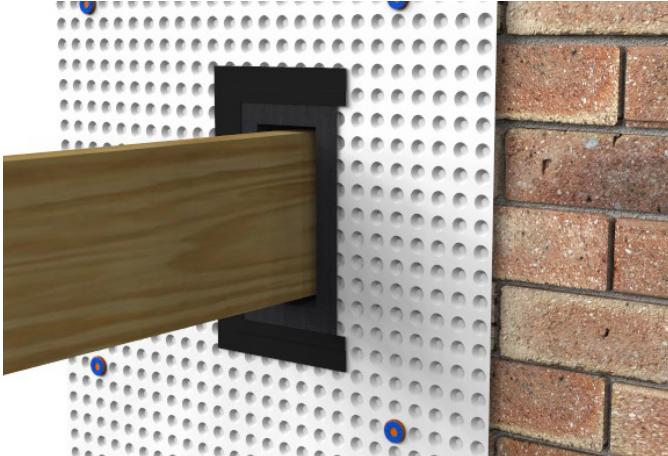
NEWTON BACK-BOX LINER - DOUBLE BOX (BX2)

Waterproof lining for double sized, electrical pattress boxes. Seal to the wall membrane with Newton Waterseal Tape. Over seal with Newton Overtape or with Newton Mesh Tape to meshed membranes.



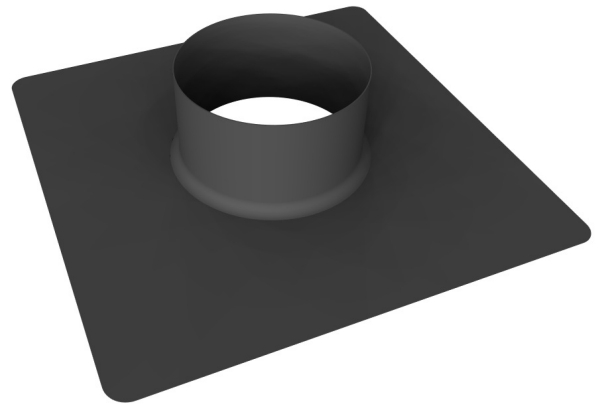
NEWTON JOIST LINER - (BX4)

Made to measure waterproof lining for steel or timber joist ends. Seal to the wall membrane with Newton Waterseal Tape. Over seal with Newton Overtape or with Newton Mesh Tape to meshed membranes.



NEWTON PIPE SLEEVE - (BX3)

Waterproof sleeve for 110 mm O/D waste pipe entries and protrusions through the wall or floor membrane. Seal to the membrane with Newton Waterseal Tape. Over seal with Newton Overtape or with Newton Mesh Tape to meshed wall membranes.



NEWTON SYSTEM 800

Ancillaries

TECHNICAL DATA

Product	Code	Size	Colour	Packaging
Newton Multiplug	A1 A32 (NSBC only)	10 mm x 57 mm	Blue/Orange Blue/Blue	100 (per bag)
Newton Overtape	A7 A8 A9	150 mm x 20 m 100 mm x 20 m 150 mm x 20 m	Black Black White	Single units
Newton Helifix Wall Ties	WT (followed by size)	155, 170, 195, 220, 245, 270, 295, 325 (mm)		100 (per box)
Newton 800 Mesh Plugs	A16	7 mm x 50 mm	Brown	250 (per bag)
Newton 800 Newtonite Plugs	A20	7 mm x 50 mm	Blue	160 (per bag)
Newton Cob Plugs	A17	10 mm x 90 mm	White	50 (per bag)
Newton Mastic	A18	0.31 litre tube	White	Single units
Newton Mesh Tape	A25	100 mm x 10 m	White	Single units
Newton Profile	A19	2 m lengths	White	Single units
Newton SDS Drill Bit - 7 mm	DB1	7 mm	N/A	Single units
Newton SDS Drill Bit - 10 mm	DB2	10 mm	N/A	Single units
Newton Back-Box Liner - Single electric box	BX1	134 mm x 134 mm x 35 mm	Black	Single units
Newton Back-Box Liner - Double electric box	BX2	200 mm x 134 mm x 35 mm	Black	Single units
Newton Pipe Sleeve	BX3	To fit 110 mm pipe	Black	Single units
Newton Joist Liner	BX4	Made to order	Black	Single units