

Polysafe™ Verona PUR



ORIGINAL

RRL-Pendulum Test
Sustainable Slip Resistance
36+

P3
AS 4586

PURE COLOURS

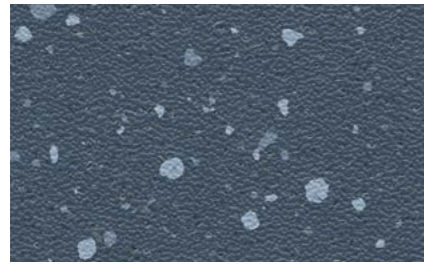
RRL-Pendulum Test
Sustainable Slip Resistance
45+

P4
AS 4586

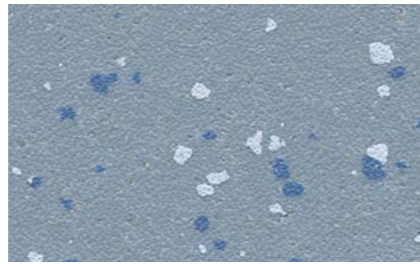
ADVANCED DESIGN WITH **SAFETY ASSURED**

The choice of floor covering is essential in creating secure and hygienic surroundings, encouraging an uplifting environment and having a positive impact on all that use the space. Polysafe Verona is designed to create a safe yet attractive interior, combining subtle pastel shades mixed with stronger accent hues and safety aggregates which are virtually invisible to the eye. Engineered to provide slip resistance which is sustainable and assured through the products guaranteed life, Polysafe Verona is made up of the ORIGINAL and PURE COLOURS collections.

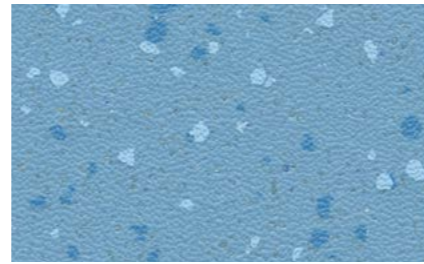




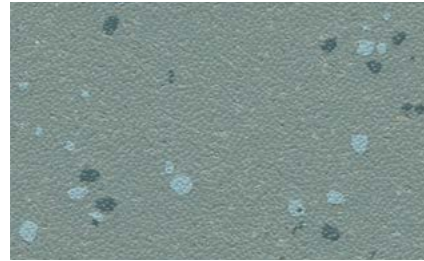
Nightfall 5207 w/r 5207
NCS S 6010-R90B LRV 12



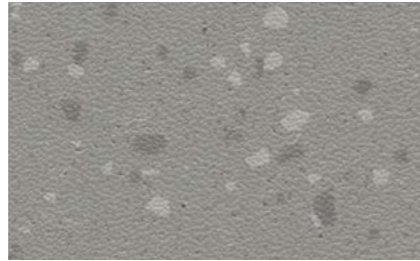
Horizon Blue 5208 w/r 5208
NCS S 3020-R90B LRV 31



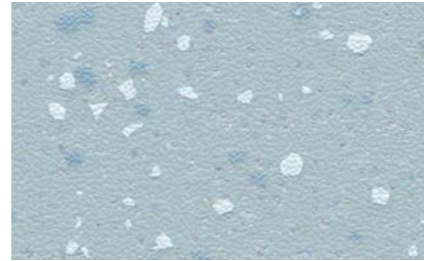
Blue Lagoon 5206 w/r 5206
NCS S 2030-R90B LRV 32



Seagrass 5211 w/r 5211
NCS S 4010-B50G LRV 25



Dolphin Grey 5203 w/r 5203
NCS S 4500-N LRV 26



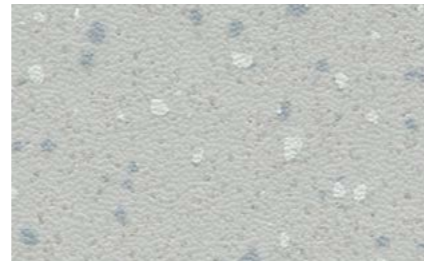
Skyline 5205 w/r 5205
NCS S 2010-B LRV 47



Freshmint 5209 w/r 5209
NCS S 2010-B30G LRV 52



Oregano 5210 w/r 5210
NCS S 2005-G70Y LRV 48



Rainstorm 5202 w/r 5202
NCS S 2502-G LRV 44



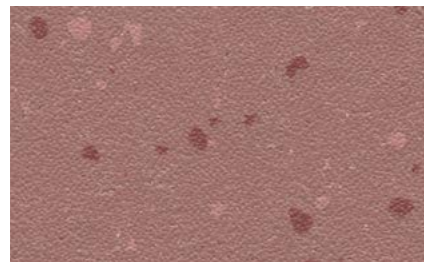
Marshmallow 5214 w/r 5214
NCS S 3005-Y50R LRV 45



Cookie Cream 5201 w/r 5201
NCS S 1502-Y LRV 64



Biscotti 5212 w/r 5212
NCS S 3005-Y20R LRV 45



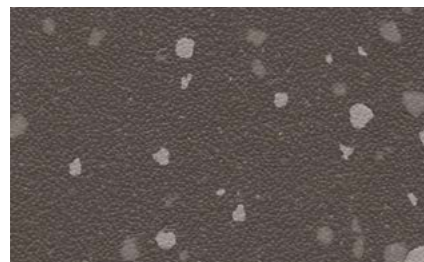
Summer Coulis 5217 w/r 5217
NCS S 4020-Y90R LRV 21



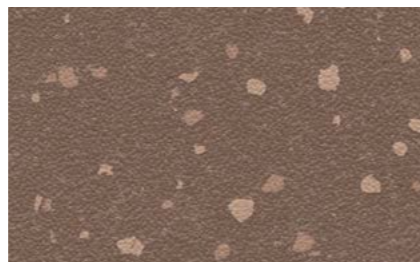
Butterscotch 5218 w/r 5218
NCS S 2030-Y30R LRV 35



Soft Peach 5216 w/r 5216
NCS S 1515-Y60R LRV 47



Café Noir 5204 w/r 5204
NCS S 7000-N LRV 11



Chocolate Chip 5215 w/r 5215
NCS S 6005-Y50R LRV 16



Caramel Latte 5213 w/r 5213
NCS S 3010-Y40R LRV 34

ORIGINAL | Part 1

Designed to promote harmony and a sense of well-being, the ORIGINAL Polysafe Verona colour palette has been carefully developed. The collection of tonal colours allows design to meet function, contributing to the creation of soothing interior design schemes. Ideal for use within areas where there is risk of spillage, the ORIGINAL Polysafe Verona collection achieves a pendulum wet test result of 36+ (slider 96) which is sustainable throughout the product's guaranteed life.





Rock Salt 5231
NCS S 3000-N w/r 9858 LRV 43



Vanilla 5221
NCS S 1502-Y w/r 5221 LRV 63



Mocha 5222
NCS S 3005-Y20R w/r 5212 LRV 43



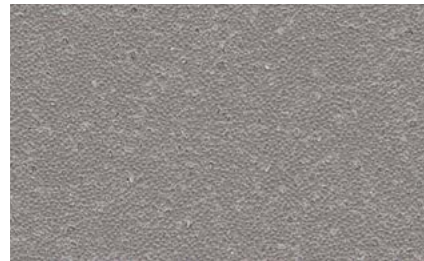
Monsoon 5226
NCS S 4500-N w/r 5764 LRV 25



Glacier 5225
NCS S 2502-B w/r 5202 LRV 47



Almond 5223
NCS S 3005-Y80R w/r 5223 LRV 43



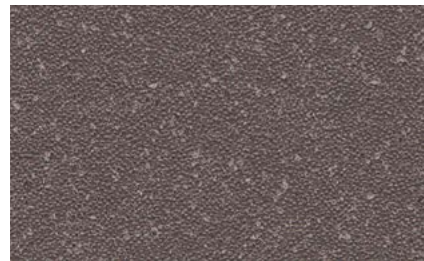
Pebble Shore 5233
NCS S 5500-N w/r 5233 LRV 21



Duck Egg 5235
NCS S 2010-B30G w/r 5209 LRV 50



Cappuccino 5224
NCS S 4010-Y50R w/r 5213 LRV 33



Americano 5234
NCS S 6502-R w/r 5204 LRV 12



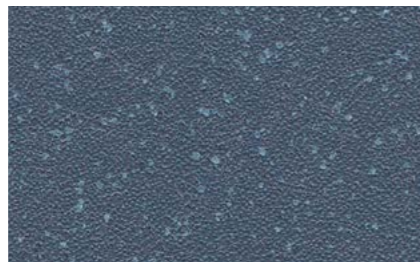
Sea Breeze 5227
NCS S 2020-B w/r 5205 LRV 44



Pacific Blue 5228
NCS S 3020-R90B w/r 5208 LRV 29



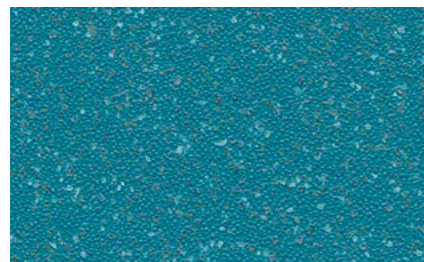
Rich Black 5236
NCS S 8000-N w/r 8640 LRV 7



Midnight Blue 5238
NCS S 6010-R90B w/r 5207 LRV 12



Azure 5229
NCS S 3030-R90B w/r 5206 LRV 31



Neptune 5239
NCS S 5040-B20G w/r 5239 LRV 12



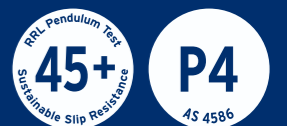
Lemon Drizzle 5241
NCS S 1070-Y w/r 9947 LRV 54



Berry Red 5232
NCS S 2070-Y90R w/r 5232 LRV 14

PURE COLOURS | Part 2

The Polysafe Verona PURE COLOURS collection features a contemporary decoration in a selection of tonal hues optimised for specification within dementia friendly design schemes. With a uniform appearance and matt surface finish the collection is perfectly suited for installation within a wide range of commercial and residential environments to ensure the underfoot safety of occupants. Additionally the PURE COLOURS collection features enhanced sustainable slip resistance of 45+ (slider 96).



PURE COLOURS

Choosing the right flooring is key in promoting a more positive and inclusive environment to those living with dementia. Designs that promote harmony and wellbeing through the creation of a sense of calm are important to resident comfort and welfare. Generating this harmonious feel is equally important whether in a residential care setting or within a person's home to support independent living.

Developed with the requirements of those living with dementia in mind, the Polysafe Verona PURE COLOURS collection features a tonal colour bank and matt surface finish, optimised to provide a decoration suitable for specification in dementia friendly environments.



Polyflor worked with the Dementia Services Development Centre (**dsdc**) at the University of Stirling to assess the suitability of the PURE COLOURS collection for specification in dementia friendly environments. The **dsdc** is an international centre of knowledge and expertise dedicated to improving the lives of people living with dementia which offers a product accreditation scheme.

The **dsdc** rates products in a tier scale. The Polysafe Verona PURE COLOURS collection performs exceptionally well with 14 colours achieving the highest **1a** rating and 4 colours achieving **1b**.

1a	1b	2
Flooring within this rating is plain and can be used indiscriminately.*	Flooring within this rating is semi-plain (minimal texture or fleck / pattern, wood effect with no knots) and in general, can be used throughout.*	Flooring within this rating has some pattern and needs to be used with caution.*

* Bear in mind the need to contrast flooring with walls, skirtings, doors / frames, furniture & sanitary ware. A minimum contrast of 30 units LRV (Light Reflectance Value) is recommended between the critical surfaces mentioned above.

PURE COLOURS	NCS Reference	LRV's	dsdc Rating
Rock Salt 5231	NCS S 3000-N	43	1a
Glacier 5225	NCS S 2502-B	47	1a
Monsoon 5226	NCS S 4500-N	25	1a
Pebble Shore 5233	NCS S 5500-N	21	1a
Americano 5234	NCS S 6502-R	12	1a
Vanilla 5221	NCS S 1502-Y	63	1a
Almond 5223	NCS S 3005-Y80R	43	1a
Mocha 5222	NCS S 3005-Y20R	43	1a
Cappuccino 5224	NCS S 4010-Y50R	33	1a
Duck Egg 5235	NCS S 2010-B30G	50	1a
Sea Breeze 5227	NCS S 2020-B	44	1a
Pacific Blue 5228	NCS S 3020-R90B	29	1a
Azure 5229	NCS S 3030-R90B	31	1a
Lemon Drizzle 5241	NCS S 1070-Y	54	1a
Berry Red 5232	NCS S 2070-Y90R	14	1b
Neptune 5239	NCS S 5040-B20G	12	1b
Midnight Blue 5238	NCS S 6010-R90B	12	1b
Rich Black 5236	NCS S 8000-N	7	1b

NCS = Natural Colour System LRV = Light Reflectance Value



Designed for **MULTI-USE** spaces

Offering slip resistance which is sustainable throughout the guaranteed life of the product, Polysafe Verona is the perfect solution to ensure underfoot safety in a wide range of interior environments. Designed for multi use spaces where there is an increased risk of slip, Polysafe Verona has a heavy commercial use area classification and is suitable for demanding, high traffic environments.

Designed for
HEALTH CARE

Creating calming and soothing interiors
to promote quicker recovery times.



Designed for
SPECIALIST CARE

Residents and medical professionals can have confidence that their floor covering provides sustainable wet slip resistance offering protection against slips, trips and falls.



Designed for
EARLY YEARS

Bright vibrant colours stimulate and aid in early development, whilst catering for the inevitable spillages.





Designed for
EDUCATION

Ideal for high traffic areas such as corridors and classrooms where there is a risk of spillage.



Designed for
LEISURE

Bold colours can be used together to assist exploration within leisure environments.



Designed for
**COMMERCIAL
ENVIRONMENTS**

Contemporary styling with built in safety
for increased underfoot protection in
busy commercial spaces.

Designed for
**RESIDENTIAL
ENVIRONMENTS**

Providing a fresh homely and safe feel in areas
such as kitchens, bathrooms and stairwells.



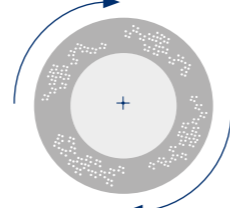
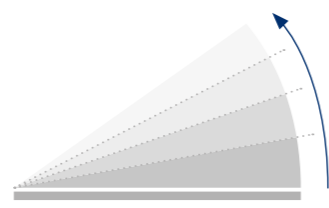
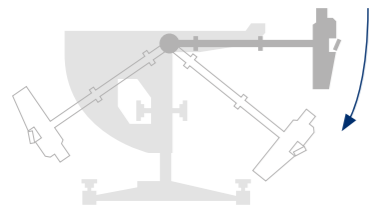
PRODUCT TESTING

In areas where there is a higher potential for slips and trips, it is important to choose a HSE compliant flooring solution that offers sustainable slip resistance for the product's lifetime.

✓
PENDULUM TEST

✓
RAMP TEST

✓
50,000 CYCLES TEST



ORIGINAL | Part 1

36+
RRL Pendulum Test
Sustainable Slip Resistance

P3
AS 4586

PURE COLOURS | Part 2

45+
RRL Pendulum Test
Sustainable Slip Resistance

P4
AS 4586

ORIGINAL | Part 1
DIN 51130 & AS 4586

R10

PURE COLOURS | Part 2
DIN 51130 & AS 4586

R11

EN 13845
The European safety flooring standard

Conformance to the 50,000 cycles abrasion test demonstrates that the performance particles within a safety floor are durable, offering longevity and sustainable performance for the guaranteed life of the product.

PUR TECHNOLOGY

- ✓ Easy clean
- ✓ Maintain cost savings
- ✓ Optimum appearance retention
- ✓ Resistance to staining & chemicals



TECHNICAL SPECIFICATION

	Gauge	ISO 24346 (EN 428)	2.0mm
	Roll Size	ISO 24341 (EN 426)	2m x 20m = 40m ²
	Total Weight	ISO 23997 (EN 430)	2600g/m ²
	General Performance	EN 13845 ASTM F1303	Conforms Conforms
	Use Area	ISO 10874 (EN 685)	
	Enhanced Slip Resistance	The wet slip resistance across all Polysafe products is sustainable throughout the guaranteed life of the product, with strict adherence to HSE Guidelines. For further clarification regarding slip resistance, consult Polyflor.	
	Verona ORIGINAL, Verona PURE*	EN 13845 AS 4586 Appendix A AS 4586 Appendix D DIN 51130/DIN EN 16165 Ann. B RRL Pendulum Test Surface Roughness ASTM D2047	ESf P3, P4* R10, R11* R10, R11* ≥36, ≥45* (wet test - 4S Rubber/Slider 96) Rz ≥20µm SCOF≥0.8
	Abrasion Resistance	EN 13845	50,000 cycles
	Reaction to Fire	EN 13501-1 ASTM E648 Aus NCC Spec C1.10-3 AS ISO 9239-1 CAN/ULC S102.2	Class Bfl-S1 Class 1 Complies >8.0kW/m ² FSV <300; SDV <500
	Static Electrical Propensity	EN 1815	≤2.0kV Classified as 'antistatic'
	VOC Emissions	Indoor Air Comfort GOLD AgBB/ABG FloorScore Finnish M1 Classification	Eurofins certified product Pass Certified Certified
	Resistance to Chemicals	ISO 26987 (EN 423)	Good chemical resistance
	Responsible Sourcing	BES 6001	Excellent
	Bacterial Resistance	ISO 846 Part C	Does not favour growth
	Agrément Assurance - Polysafe Verona PUR has been independently assessed by the British Board of Agrément and product performance is assured for at least 10 years in recommended use areas. With proper maintenance, the appearance, colour and slip resistance will be retained during this period.		
	Environmentally Preferable Flooring - Polysafe Verona PUR achieves BRE Global A+ rating (ENP 472) in the Green Guide to Specification in use areas such as education and healthcare and is GreenTag LCA Rate certified with GreenRate level A - Gold Plus. Generic EN 15804 Environmental Product Declaration (EPD) available on request. It is 100% recyclable and contains recycled material. Recyclable via the Recofloor scheme. Visit www.polyflor.com/sustainability		
	Polysafe PUR - Polysafe Verona PUR features a high quality, cross-linked polyurethane reinforcement, UV cured to provide superior cleaning benefits, life cycle maintenance savings and optimum appearance retention. As with all Polysafe products, Polysafe Verona PUR should not have a polish applied.		
	Hygiene - All Polyflor commercial sheet vinyl ranges provide a continuous, impervious and hygienic flooring solution which can be confidently cleaned in accordance with recommended maintenance procedures and approved maintenance products. The implementation of an effective cleaning regime is the most important defence against infection.		
	Polysafe safety flooring ranges have good resistance to dilute acids and alkalis, are compatible for use with the most commonly used alco-based hand gels and are suitable for steam cleaning on a periodic basis. Chemical resistance charts available on request. For information regarding handling and installation, adhesives, maintenance, applications, chemical resistance and product warranty, consult Polyflor Customer Technical Services on +44 (0)161 767 1912 , or email tech@polyflor.com . As with all Polysafe products, Polysafe Verona PUR should not have a polish applied. The data presented is correct at the time of printing. For latest information, please visit our website polyflor.com . Decoration and shade may vary slightly from the samples shown.		

100% RECYCLABLE
CONTAINS RECYCLED MATERIAL

A+BRE
ENP 472
ENVIRONMENTAL RATING

EPD
ENVIRONMENTAL PRODUCT DECLARATION

Recofloor
Vinyl Take-Back Scheme

BBA
BRITISH BOARD OF AGREEMENT

UK
MANUFACTURED

For more information regarding our recommended safety flooring finishes or product testing please contact Customer Technical Services Department on **+44 (0)161 767 1912** or email tech@polyflor.com. Alternatively please visit polyflor.com/safety

UK
CA
BS EN 14041

CE
EN 14041

FREE
SAMPLES

+44 (0)161 767 2551
polyflor.com

Polysafe™

POLYFLOR™ INTERNATIONAL

Australia

Polyflor Australia
Tel: 1800 777 425
E-mail: sales@polyflor.com.au

Canada

Polyflor Canada Inc.
Tel: +1 905 364 3000
E-mail: sales@polyflor.ca

China

Polyflor Hong Kong O/B Polyflor Ltd.
Tel: +(852) 2865 0101
E-mail: info@polyflor.com.hk

Colombia

Polyflor Ltd. (LATAM Office)
Tel: +57 (601) 7431965
E-mail: info@polyflor.com

France

James Halstead France SAS
Tel: +33 (0)8 20 20 32 11
E-mail: info@jhfrance.fr

Germany

objectflor Art und Design Belags GmbH
Tel: +49 (0) 2236 966 330
E-mail: info@objectflor.de

India

Polyflor India Pvt Ltd.
Tel: +91 22 4023 2485
E-mail: info@polyflor.co.in

Ireland

Polyflor Ireland
Tel: +353 (1) 864 9304
E-mail: salesireland@polyflor.com

Malaysia

Polyflor Martex
Tel: 1300 80 7788
E-mail: sales@polyflor.com.my

Middle East

Polyflor FZE
Tel: +971 50 406 8114
E-mail: aelwakil@polyflorfze.ae

New Zealand

Polyflor New Zealand Ltd.
Tel: 0800 765 935 Tel: +64 9 269 1111
E-mail: sales@polyflor.co.nz

Norway

Polyflor Nordic
Tel: +47 23 00 84 00
E-mail: firmapost@polyflor.no

Poland

Pollfor Sp. Z.o.o
Tel: +48 (0) 61 820 3155
E-mail: polyflor@pollfor.com.pl

South Africa

Poly Sales Africa (Pty.) Ltd.
Tel: +27 (0) 11 609 3500
E-mail: info@polyflor.co.za

Spain

Polyflor Ltd.
Tel: +34 619 949 054
E-mail: info@polyflor.com

Sweden

FalckDesign AB
Tel: +46 (0) 300 15820
E-mail: info@falckdesign.com

POLYFLOR™ UK

Polyflor Ltd. PO Box 3, Radcliffe New Road,
Whitefield, Manchester, M45 7NR

UK Sales Direct: +44 (0) 161 767 1122
UK Samples Direct: +44 (0) 161 767 2551
Export Sales Direct: +44 (0) 161 767 1913
Technical Support: +44 (0) 161 767 1912
E-mail: info@polyflor.com

polyflor.com/safety

