



*Jaymart*

# **Polyrib Product Information**

A very heavy duty ribbed polypropylene/  
waffle backed entrance matting . Polyrib  
has a very high pile weight making it  
suitable for heavy duty applications.

# Description

Polyrib is a traditional very heavy duty ribbed polypropylene/ waffle backed entrance matting.

It is suitable for use in indoors and outdoor covered areas.

Very popular as carpeting in foyers, offices, shops, corridors etc. Polyrib is extremely hard wearing and effective at trapping dirt, dust and moisture which would otherwise be walked into a building.

Easily cut to size without fraying. Polyrib is also utilised in our prestigious aluminium mat systems in Grime Stopper.

DDA and wheelchair compliant matting

Rolls 20m x 2m wide

Cut Lengths Available

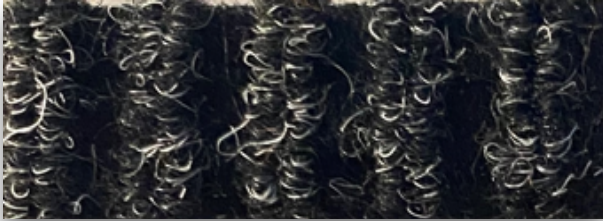


Polyrib Complies with BS 8300 - 2:2018 for an inclusive and accessible environment



10mm  
Gauge

# Colours Available



**Anthracite**



**Silver Grey**



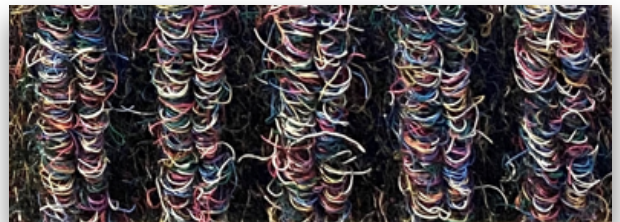
**Steel Blue**



**Jeans Blue**



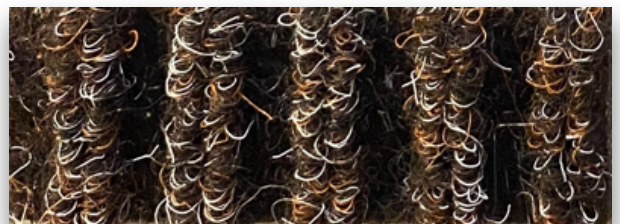
**Forest Green**



**Forest**



**Red**



**Brown/ White**



**Safari**



**Lever**

# Polyrib Specification

## Polyrib Insert Specification

### Manufacturing Process

Needled pile Floor covering

ISO 2424

### Surface Aspect

Heavy Duty Rib

### Pile Yarn Composition

100% Polypropylene

### Backing

Waffleback

ISO 2424

### Pile Weight

1150g/m<sup>2</sup> +/- 7.5%

### Total Weight

2090g/m<sup>2</sup> +/- 7.5%

ISO 8543

### Pile height

4.5mm +/- 5.0mm

ISO 1766

### Total Height

11.0mm +/- 7.5mm

ISO 1765

### Thickness

9mm

### Flammability

Ffl

EN 13501 -1

### Width

2m Wide



GUT Nr 13220



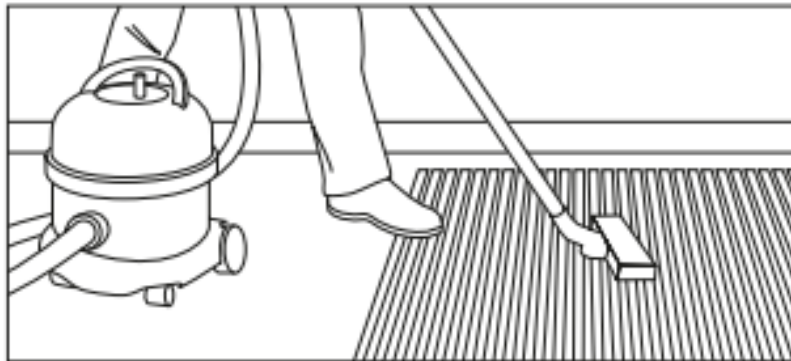
# Polyrib Installation, Cleaning & Maintenance

## Installation

Ideally fully adhered to dry, smooth sub-floors with approved adhesive but can be loose laid if necessary in matwells or as protective runners. Easily cut to size without fraying.

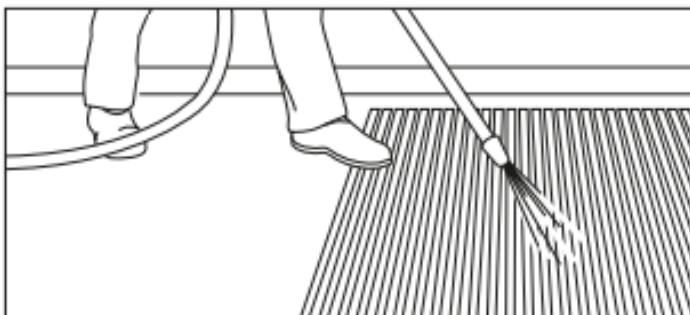
## Maintenance

We recommend daily vacuuming with suction attachment for best appearance retention and longer working life.



For periodic maintenance the best results can be achieved by the periodic use of a spray or dry extraction carpet cleaning machine, or where possible by the removal of the matting for pressure washing or steam cleaning.

The use of a mild detergent (neutral pH) cleaning solution in the carpet cleaning machine should loosen ingrained soiling and aid the removal of oils and grease.



More stubborn stains should be treated with a solvent based spot remover prior to re-cleaning with the detergent solution.

Chewing gum can be removed by freeze spraying or with a proprietary chewing gum remover and then scraped or combed out of the matting carpet pile. This should be done before the full cleaning process is started.



# Our 4 step process to a cleaner environment

## Step 1

The best way to keep your premises clean is to stop dirt from even getting through the front door. Effective exterior matting scrapes clean and wipes dry, leaving the worst dirt and grit outside, and allowing subsequent interior matting to clean even better.

## Step 2

Working in a similar way to exterior matting, this is similarly tough and durable matting that carries on the work to remove the last of the most damaging soil and grit, and continue the drying process.

## Step 3

With the worst of the damp and debris now dealt with, secondary internal matting is a high-specification, high-performance product that finishes the dusting and drying.

## Step 4

The foyer is one of the highest traffic areas in your building so, however effective your entrance matting, easy to clean, highly durable and attractive carpet that always looks its best will help you make a great first impression – every time.

# Environmental Impact/ Responsibility

Our Products Use 100% recycled Aluminium and can be recycled after use making our aluminium mat products very environmentally friendly. This combined with the ability to replace the insert material rather than replacing the whole mat, means that although not directly eligible for BREEAM Credits selecting Jaymart will help in supporting your BREEAM certification.

We Manufacture in the United Kingdom to precise specifications/ measurements. This means Jaymart can reduce waste and transport.

Our products are extremely Hardwearing and will reduce the need for frequent replacement to support BREEAM MAT 05 criteria and also minimise the use of harmful cleaning chemicals and cleaning/ maintenance costs for the end user.

BREEAM MAT 01 addresses the environmental impact through the lifecycle of the product. The Jaymart aluminium entrance matting system have the ability to refurbish rather than replace means that our products can further support your aims. It will also help with meeting BREEAM MAT 06 requirements. We can also offer products made from natural inserts from sustainable sources to further meet environmental aims. The expected useful lifespan when refurbished is 30 years approximately dependent on wear and correct maintenance being carried out.



Proudly Manufactured in The UK



100% Recycled Aluminium





*Jaymart*

**Jaymart Rubber & Plastics  
Limited**

**Roman Way, Crusader  
Park,**

**Warminster**

**BA12 8SP**

**Tel 01985 218994**

**Email: [sales@jaymart.co.uk](mailto:sales@jaymart.co.uk)**

**[www.jaymart.co.uk](http://www.jaymart.co.uk)**