

Servitite®

Internal PVC waterstop system for passive protection of movement joints and construction joints in reinforced concrete structures

Applications

Servitite® is an internally cast specially formulated PVC waterstop system manufactured in a range of sizes for use in reinforced concrete structures. Being cast into the centre of the concrete member, Servitite® waterstops will provide resistance against high hydrostatic pressure from both faces.

Installation

A continuous waterstop network should be used at all joints to prevent the ingress of moisture using only factory produced fabrications for changes of direction or profile with site jointing limited to simple butted welds. Before concreting, waterstops must be clean and free from concrete laitance, oil, grease or any other contamination that might prevent a good waterstop to concrete bond.

Slab joints

Servitite should be supported in specially prepared split stop-end formwork which holds the waterstop in the horizontal plane so preventing displacement and folding so that half of its width will be cast into the concrete approximately half way through the thickness of the slab.

Care must be taken to ensure that the waterstop is retained in the horizontal plane and that adequate compaction of concrete takes place below the web of the waterstop in order to avoid "honeycombing". Lifting the waterstop during compaction to release entrapped air will assist in forming dense compacted concrete.

After stripping the formwork supporting the waterstop, the second half can be cast into the adjoining slab with similar precautions taken with regard to "honeycombing".

Wall joints

Servitite must be supported in split-end form work as described for slab joints, with great care taken to ensure that the waterstop does not fold over under the weight of poured concrete. The waterstop may be securely wired to the reinforcing steel using the appropriate Secura Clips supplied, clipped over the end bulbs as shown overleaf.

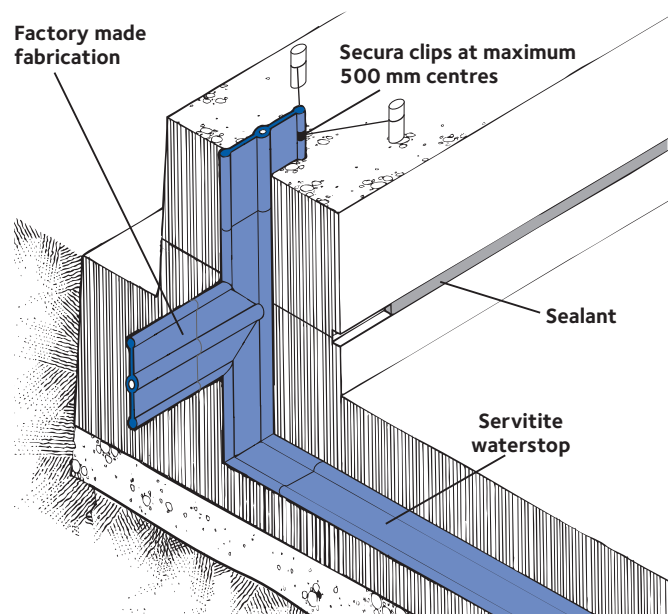
Size of waterstop	Minimum Concrete Section
Servitite 150 m	160 mm
Servitite 230	240 mm
Servitite 305	315 mm

Note: The above information assumes that waterstops are installed centrally in a joint.

Advantages

- **Robust profile** - large solid circular end bulbs promote better anchorage and embedment into concrete and simplifies site jointing
- **Flexible** - will accommodate large movements during construction and service life
- **Pliable** - remains flexible at low temperatures
- **Valve action** - created by concrete shrinkage around end bulbs and adjacent fin formation
- **Thick web** - 10 mm thickness prevents folding over and displacement during concrete pouring
- **Common section for easy installation** - for construction and expansion joints subject to thermal movement and deflection.





Details shown are typical illustrations only and not working drawings. For assistance with working drawings and additional technical advice please contact GCP Technical Services.

Supply

Normal construction/movement joints

Servitite 150	7.5 m rolls wt 20 kg
Servitite 230	5.0 m rolls wt 23 kg
Servitite 305	5.0 m rolls wt 26 kg
Factory made junctions and fabrications	Available in sizes and configurations to suit the site requirements

Ancillary Products

Secura Clip Small (20 mm)	Unit for Servitite 150
Secura Clip Large (25 mm)	Unit for Servitite 230 and 305

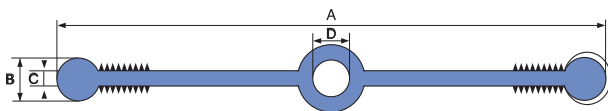
Equipment by GCP

Jointing Jig	Jig Servitite 150/230/305
Welding Knives	Electric Knife 110v & 220v

Equipment by Others: Fine tooth saw, wire brush, Stanley knife, 110v or 220v power source.

Physical Properties

Property	Typical Values
Tensile Strength	≥ 14 N/mm ²
Elongation at break	> 250%
Shore A Hardness	80 ± 4
Specific Gravity	1.4



Correct location of Secura clip, fitted on site as required (max. 500 mm centres) to allow tying to rebar

Size	NOMINAL Dimensions				Secura clip size
	A	B	C	D	
150	150 mm	19 mm	10 mm	13 mm	20 mm
230	230 mm	25 mm	10 mm	20 mm	25 mm
305	305 mm	25 mm	10 mm	20 mm	25 mm

All test results shown in this data sheet are determined under laboratory conditions and with the product sample taken directly from stock in its original packing without any alteration or modification of its component parts.

Health and Safety

There is no legal requirement for a Safety Data Sheet (SDS) for Secura Clips or AeroFil. For health and safety questions on these products please contact GCP Applied Technologies.

For Servitite read the product label and SDS before use. Users must comply with all risk and safety phrases. SDS's can be obtained from GCP Applied Technologies or from our web site at gcpat.com.

Irritating fumes (Hydrogen Chloride) will be liberated when the product is heat welded. Ensure adequate ventilation.

NBS Specification Clause

Refer to Clause E40 310.

gcpat.com | Customer Service: Tel +44 (0)1753 490000 | Fax +44 (0)1753 490001

We hope the information here will be helpful. It is based on data and knowledge considered to be true and accurate, and is offered for consideration, investigation and verification by the user, but we do not warrant the results to be obtained. Please read all statements, recommendations, and suggestions in conjunction with our conditions of sale, which apply to all goods supplied by us. No statement, recommendation, or suggestion is intended for any use that would infringe any patent, copyright, or other third party right.

Servitite is trademark, which may be registered in the United States and/or other countries, of GCP Applied Technologies Inc. This trademark list has been compiled using available published information as of the publication date and may not accurately reflect current trademark ownership or status.

© Copyright 2016 GCP Applied Technologies Inc. All rights reserved.

GCP Applied Technologies Inc., 62 Whittemore Avenue, Cambridge, MA 02140 USA

In the UK, Ipswich Road, Slough, Berkshire, SL1 4EQ, UK

GCP0082_0816 Servitite_UK



gcp applied technologies