






# CONTENT

Electric heaters .....	8 - 33
Professional heaters .....	34 - 37
Control units .....	38 - 39
Wood burning heaters .....	40 - 43
Chimneys & accessories .....	44 - 45
Technical specifications .....	46 - 58




A photograph of a man and a woman in a sauna. The man is in the foreground, shirtless, with his head turned to the left, smiling. The woman is behind him, also smiling, wearing a red top. The background consists of dark wooden slats.

# Genuine sauna & steam

Sauna has been around for more than 2000 years. Historically, it has been an ongoing cornerstone of Finnish culture, an essential of everyday life. Within sauna walls, we find a few precious moments to reflect on the day, share a laugh with loved ones, or just unwind and enjoy the glow earned from physical effort. Today's Helo saunas, steam rooms and accessories are an original, honest expression of our Finnish roots. We know what a relaxing, rewarding, reviving few minutes of soft heat can do for the body and soul. You will see it in the quality of our craftsmanship, the breadth of our service and in our obsessive attention to detail — a true passion for making the genuine sauna experience available to all.





## Helo every day

We believe everyone should be able to enjoy the physical, emotional and spiritual benefits of sauna and steam every single day. That is why you will find so many choices in this catalogue. Styling options to suit almost any home and taste in decor. Functional features that help you recreate the daily sauna or steam experience you and your family appreciate best. And a host of extras that let you customise the comfort to your exact specifications. With Helo, there are no barriers to making a genuine sauna or steam experience a natural part of every day home life. That is our commitment: Helo for all, every day.

## For body & mind

The healing benefits of sauna and steam have been known by cultures around the world for at least a thousand years. After a workout, it soothes aching bodies. After any activity, it renews passion for life. Regular use of sauna, can help detoxify your body, melt away muscle and joint aches and pains, and relieve stress. It is one of the very best investments you can make in you and your family's health and well-being. The physical benefits combined with the associated stress reduction makes the decision to purchase a Helo experience an easy one — it not only feels good, it's good for you.



# ELECTRIC HEATERS





Quality craftsmanship is the signature of genuine Helo electric heaters. A fusion of tradition, modern technology, they offer trouble-free performance in a range of aesthetically striking designs. Choose from a wide range of models; there is an option for every taste and sauna room, each offering a unique expression of the genuine sauna experience.



# FONDA DUO

Sometimes you prefer the traditional caress of a soothing heat. Other times the gentle cleansing of ultra soft steam. Now you can have both.

# The caress of steam at the touch of a button

NEW

FONDA DUO gives you the luxury of choosing either from the same compact, eye-catching unit. As an added treat, you can pamper yourself by infusing steam with aromas that provide a variety of proven healthful effects—simply add a few drops of Helo Natural Essential Oils to the integrated aroma tray.

#### QUICK FACTS:

- Wall-mounted or floor-standing\*\*, for saunas 4 – 13 m<sup>2</sup>. Large 20 kg stone compartment for soft, even heat and steam production
- 2 kW steam generator and integrated water tank with manual filling for maximum convenience
- Supplied with T2 control unit with proximity sensor
- Available in 4.4, 6.6 or 8 kW
- Available in black



Wall-mounted



#### EXPLORE YOUR OPTIONS WITH THE T2 CONTROLLER

The T2 electronic touch pad controller puts powerful planning and control options at your fingertips. With T2 you can present the heating of your sauna up to 23 h, ensuring your sauna is ready when you are.



#### Helo Natural Essential Oils

Add a few drops to water, ladle it over hot sauna stones and let nature's recipes for treating body, mind and soul wash over you.

\*\*Legs are available by special order.



# FONDA

The FONDA traditional series is a smart option for fans of Finnish sauna thanks to its large 20 kg rock compartment and powerful output.

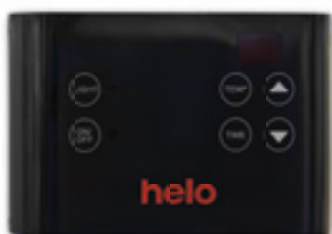
# Better comfort by design

Fonda delivers wave after wave of sharp and intense heat to every corner of the room. Choose from two convenient, equally attractive models: Fonda DET with programming and control from either the T1 touchpad or the EC50 control panel, or Fonda ST with integrated control panel.

NEW

#### QUICK FACTS:

- Wall-mounted or floor-standing\*\*, for saunas 4 - 13 m<sup>3</sup>
- Sizes 4.4, 6.6 or 8 kW
- Fonda DET is available in grey or red and Fonda ST in grey only



The EC50 control panel.



Easy-to-use T1 independent touchpad controller.



The integrated control panel of Fonda ST.

\*\*Legs are available by special order.



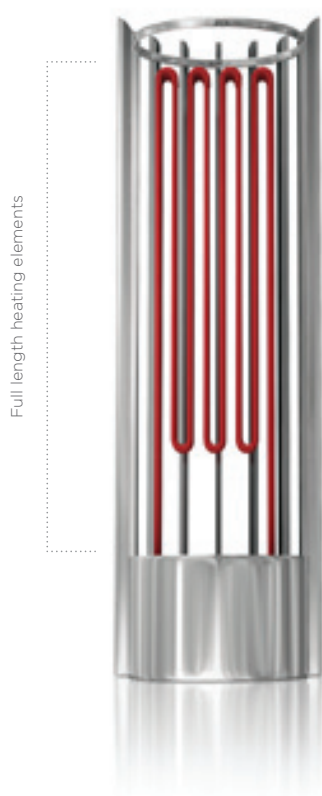
# ROCHER

Our high capacity ROCHER sauna heater really makes a statement. Holding up to 100 kg of genuine Finnish sauna stones, ROCHER radiates soft, even heat from top to base

# 100 kg of pure comfort

Despite its handsome open basket design, ROCHER can be installed in a corner, along a side wall or in the middle of the sauna. For an added design touch, you can also sink ROCHER into a lower bench and fit it with a glass, soapstone or chrome, either of which can be backlit to stunning effect.

A ladle of water splashed on its 100 kg of heating stones, and ROCHER responds with a purity and soft intensity that is impossible to resist. Its brushed steel brazier shell puts the stones in relief for an added dimension of pleasing genuineness.



**100  
KG**

#### **FULL LENGTH HEATING ELEMENTS**

ROCHER features longer heating elements than any other heater available. They are fully integrated into the 100 kg of stones, essentially heating every single rock. This ensures heat and steam radiates evenly and quickly throughout the sauna.

Learn more at [helosauna.com](http://helosauna.com) 

For a complete overview  
of all our sauna heaters



# CAVA

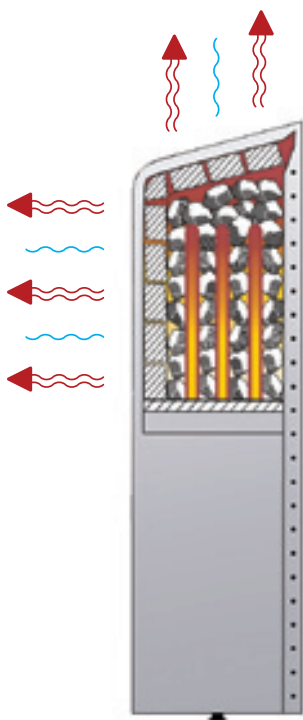
With its irresistibly smooth roundness, CAVA brings calming harmony to your sauna's atmosphere. Flawless soap stone faces on top and at the front absorb, store and release the heat from the 30 kg of vulcanite stones behind them. This double step ensures evenly perfect warmth and moisture.



# A climate of calm

CAVA's "up and out" heat distribution system quickly sets the perfect climate for a genuine sauna experience. Because natural materials make up so much of its surface, CAVA integrates elegantly with its surroundings, letting you take even more pleasure in the calm of the setting.

With its traditional materials and feel and advanced heat distribution concept, CAVA is an ongoing invitation to relax and recharge in genuine style.



## HEAT RADIATION

Heat radiates from the core vulcanite stones inside CAVA, storing in the soap stones above and to the front of them. The soap stones release the heat and soft steam evenly both up and out, giving a perfectly even and pleasant temperature in the sauna.

Learn more  
at [helosauna.com](http://helosauna.com) [www](http://www.helosauna.com)

CAVA's unique heat distribution quickly produces a full, rich climate in all areas of the sauna.



# FUSION

Sometimes, you're in the mood for the traditional intensity of dry sauna. Other times, the cleansing touch of soft, billowy steam. FUSION is the heater that lets you have both.

# Easy does it

With FUSION, deciding which sauna climate you want is the only hard part. Built-in electronic temperature and humidity sensors automatically correct and adjust to provide steady levels throughout your sauna. You can even choose the option of connecting your FUSION heater to a water line, ensuring the water tank refills automatically.

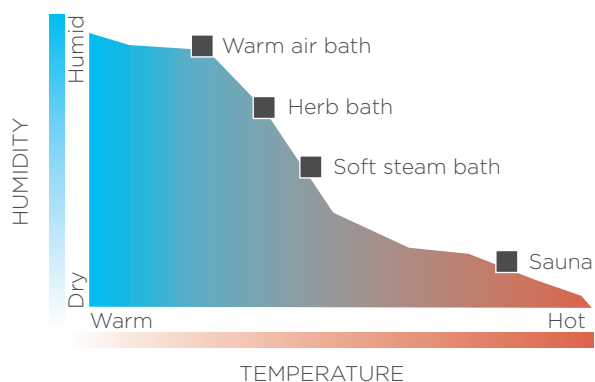
Once you set the temperature and humidity, FUSION automatically takes care of the rest. With FUSION, you get the genuine sauna experience, exactly as you prefer it.

Fusion comes with a no-fuss control which among other things let you set automatic temperature, humidity and sauna duration.



#### FUSION CONTROL QUICK FACTS:

- On-line relative humidity control
- 0 - 24 hours preset time
- 0 - 2, 6, in professional use 12 or 23 hours heating time.
- The control panel remembers the last setting
- Real time clock
- Automatic drying function, 30 minutes
- Light dimmer
- Stepless ventilator control
- Surface wall mounting only outside of sauna
- Light control



Learn more  
at [helosauna.com](http://helosauna.com) [www](http://www.helosauna.com)

#### ALL SAUNA COMBINATIONS AVAILABLE

A single heater that offers every combination of the sauna experience, from traditionally dry and hot, to nicely soft and steamy.

FUSION is the only heater that lets you set exact temperature and humidity levels, and maintain them throughout your sauna.



# SAUNA- TONTTU

A collaboration between Helo and world-renowned designer Ristomatti Ratia, SAUNATONTTU is the ultimate sauna heater.

# Ready when you are

Incorporating several smart features and superb European design, SAUNATONTTU is truly the “best sauna heater in the world”, bar none. Its secret is in the constant heat retention by the large quantity of rocks within the super-insulated shell. This means soft, perfect heat is always available, letting you enjoy a sauna without preheating.

Its unique conical form and cool-touch top performing insulation system means SAUNATONTTU can be positioned almost anywhere in the sauna – giving you more freedom in planning. 100 kg rock capacity stores and releases moist, soft and rich steam and heat evenly, ensuring genuine pleasure and relaxation with every session.



## Unique design

Saunatonnttu is part of the RATIA collection, ensuring world-class design with the latest innovations and functionalities.



## SUPER INSULATED HEATER

Because Saunatonnttu is insulated it can store the heat generated by the small standby power (300 W). As a storage heater, Saunatonnttu makes it possible to have a sauna session whenever you prefer without planning or preheating the sauna

Learn more at [helosauna.com](http://www.helosauna.com) 

For a complete overview of all our sauna heaters

\*The guard rail shown on this picture is optional



# RONDO

RONDO is a member of our heat-accumulation heater range. Its specially insulated shell stores heat generated in the 90 kg of rocks, making your sauna ever-ready for genuine relaxation.

# Convenient luxury

RONDO's unique design not only ensures the stable and controlled release of heat, it maximises your convenience — making your sauna session even more of a pleasure. Its optimised insulation shell retains heat effectively, letting you enjoy saunas without pre-heating, and because of its cool-touch exterior, makes it easy to position anywhere in the sauna with minimal safety distances.

Its striking barrel shape makes an eye-catching centrepiece for your sauna, and radiates gentle, luxuriously even steam and heat in every direction. As a special added touch, its patented swivel lid gives you access to the stones in any position, making it even easier to regulate your ideal temperature even while seated!



#### ONE OF A KIND ACCESS

No other heater can boast a 360 degree swivel lid — a true Helo innovation. RONDO's repositionable lid means you can, for instance, simply reach from where you're seated and open the heater without getting up — letting you to effortlessly add a ladle of water anytime the mood strikes you. This remarkable lid, like the rest of the heater, is guaranteed for years of dependable performance.

Learn more at [helosauna.com](http://www.helosauna.com) 

For a complete overview of all our sauna heaters



# TAIKA

Interested in conjuring up a unique-looking sauna that stands out from the crowd? The new TAIKA\* is the perfect addition to your stylish sauna cabin, giving it a magical touch and turning an ordinary experience into something enchanting.



# Pure magic!

The work of top Finnish designer Ristomatti Ratia, this sauna heater was inspired by the look of a witch's pitch-black cauldron. The brew inside the cauldron consists of 65 kilos of sauna stones. Just add a sprinkling of water and enjoy the consistent and pleasantly soft steam emerging from the depths.

The TAIKA heater is floor mounted. It is 77 cm tall and has an impressive diameter of 68 cm. To get the most out of this sauna heater - a design classic of the future - the sauna cabin should be fairly spacious.



## Unique design

Taika is part of the RATIA collection, ensuring world-class design with the latest innovations and functionalities.



## SOFT STEAM EMERGING

The brew inside the cauldron consists of 65 kilos of sauna stones. Just add a sprinkling of water and enjoy the consistent and pleasantly soft steam emerging from the depths.



## CONTROL\*

The Helo Smart digital control unit, specially designed for this top-of-the-range heater, allows you to operate the lighting and ventilation in the sauna cabin and has an energy-saving eco function.

Learn more at [helosauna.com](http://helosauna.com) 

For a complete overview of all our sauna heaters

\*Needs Contactor box WE 11 to function



# PIKKU- TONTTU

Helo Pikkutonttu, a member of the Tonttu series, designed by renowned Finnish designer, Ristomatti Ratia, harmoniously combines form and function. The low surface temperature of the Helo Pikkutonttu makes it safe to use and the small safety distances give new possibilities for designing the sauna interior.

# Form meets function

Shaped exclusively for corner fittings, PIKKUTONTTU's stylised shell is insulated to keep its surface cool, protecting against skin burns. At the same time, its 70 kg rock mass assures incomparably luxurious billows of soft heat and steam. The super-insulated shell keeps heat-up time similar to a traditional heater and the huge rock mass provides luxurious soft heat and soft steam.



## Unique design

Pikkutonttu is part of the RATIA collection, ensuring world-class design with the latest innovations and functionalities.



## Low surface temperature

Perfect for the family, Pikkutonttu has a very low surface temperature, giving a minimal safety distance. This also presents more interior design opportunities. The heater has a large heat storage capacity and produces a thick steam cloud when water is poured on the rocks.

Learn more at [helosauna.com](http://helosauna.com) 

For a complete overview of all our sauna heaters

# FERRO

The sleek, graphite grey and powerful FERRO heater is the smart choice for a family size sauna.

Surprisingly compact, FERRO takes up little space — despite its 50 kg stone capacity and power to provide even waves of soft, intense heat for saunas up to 18 m<sup>3</sup>. Attractively designed and sensibly priced, FERRO gives you many decor planning options and can be installed next the wall or in the middle of your sauna.



#### IDEAL FOR FAMILY

The FERRO is a stylishly designed heater at a sensible price, ideal for family size sauna rooms of 8 - 18 m<sup>3</sup>. For public bathing facilities, we recommend LAAVA and MAGMA heaters which are specially designed for commercial sauna rooms.

# RING WALL

The RING WALL is an impressive natural stone heater, well suited for family-sized or even small residential saunas.

Despite its large stone capacity (37 kg) RING WALL is installed to the wall and is therefore a real space-saver. RING WALL is an excellent choice for those who appreciate practicality, classy design and the soft pleasant steam of a natural stone heater. This heater both delivers the benefits, and only takes up less than a half square meter of floor space – and that's including safety clearances!

RING WALL heaters are suitable for saunas with a capacity of 4 – 13 m<sup>3</sup> and with a minimum height of 190 cm.



## SMOOTHLY SOFT STEAM

The RING WALL stands out first by its open design, with the irregular natural stones and the geometric brushed steel housing complementing each other beautifully. And when a ladle of water is thrown onto the stones, the heater surrounds you with pleasant and smoothly soft steam.

# RING

Round shape, soft surrounding steam!

The RING stands out first by its appearance, with the irregular natural stones and the geometric shape of the housing complementing each other beautifully. The heater has an impressive steel ring cage for 60 kilos of stones. The secret of the pleasantly soft steam is in the full-length heating elements that warm even the upper stones. Heat radiates evenly and rapidly in every direction. A scoop of water on the stones becomes soft, relaxing steam.



## INTERIOR DESIGN

Inspiring for interior design, the RING can be installed free standing or embedded in a raised floor using a glass, soapstone or chrome collar. This also enables lighting from underneath. The temperature sensor is installed in the ceiling, so the heater may also be placed centrally.



# ROXX

Soft steam, beautiful design!

ROXX unites modern industrial design with a large amount of natural stone. This impressive brushed steel design heater produces enjoyable soft-heated steam or löyly. Heat is stored efficiently in the stones, making ROXX a favorite for löyly lovers. When water is thrown onto the nearly 40 kilos of stones, it produces pleasant and smoothly soft steam.



#### **FLOOR OR INTEGRATED**

ROXX can be installed on the floor or integrated into the structure. ROXX stands on its own feet, adjustable for the slope of the sauna floor. For additional security, the heater is braced to the wall.

# Something for everyone

Your choice of Helo electric sauna heater will depend in part on personal taste, and in part on the functional demands of your sauna cabin.

## MINI SA

MINI SA is purpose-designed for dependable, everyday sauna use. Yet MINI SA also holds a surprisingly high quantity of rocks (10 kg) for a heater in its size and class — offering genuinely true sauna pleasure. The built in timer and thermostat also make this compact heater easy to use. Perfect heater for saunas sized from 2 – 4 m<sup>3</sup>.

Available in classic grey. 370 x 420 x 200 mm (wxhxd). Recommended amount of rocks 10 kg. Be sure to check safety distances on pages 47 – 58.



## JUNIOR

The JUNIOR is a modern, slimline sauna heater for small saunas. The digital control panel is installed outside the sauna room and is easy to use. JUNIOR's rock compartment takes 10 kg rocks, which ensures a good sauna bath. Colour is chrome. JUNIOR is delivered with its own Digi RA 9 control unit. Digi RA 9 has 0 – 6 hours heating time, factory setting is 2 hours. Temperature can be adjusted between 50 – 123 °C, factory setting is 80 °C. Flush mounting, outside the sauna room.

Available in chrome. Recommended amount of rocks 10 kg. Be sure to check safety distances on pages 47 – 58.



## CUP

Reliable and safe CUP sauna heaters are an excellent choice for traditional Finnish type sauna. These compact wall mounted heaters are designed for domestic small and mid-size sauna rooms. They are easy to assemble and easy to use with built-in timer and thermostat or with separate control unit. With the timer you can pre-select the time when you want the heater to be turned on, max. 9 hours beforehand. The running time is max 3 hours.

Available in black and chrome. Recommended amount of rocks 15 – 23 kg. Be sure to check safety distances on pages 47 – 58.



## LUMI

The LUMI has a new elegant tapered chrome steel design and holds up to 20 – 23 kg of stones for a softer sauna bath. The heater has handy manual controls, easily accessible on the side of the heater, with a built in timer and thermostat. LUMI can be installed with controls on either right or left hand side.

Available in chrome. 435 x 500 x 265 mm (wxhxd). Recommended amount of rocks 20 – 23 kg. Be sure to check safety distances on pages 47 – 58.





## LUMI HOT TOP ST

LUMI HOT TOP ST is a stylish new version of Helo's popular Lumi heater. With its curved chrome steel housing, die-cast aluminium stone casing and space-saving wall installation, HOT TOP is an attractive option for apartment or small-space saunas. The built-in timer and thermostat are handily located on the narrow side, at a convenient height and viewing angle. Controls can be installed to the left or right.

Heater weight 11.4 kg. 20 kg stone capacity provides pleasant, soft heat and steam in saunas ranging from 3 - 13 m<sup>3</sup>. 505 x 480 x 310 + 30 mm (rack) (wxhxd). Be sure to check safety distances on pages 47 - 58.



## APOLLO

APOLLO heater caress bathers with its rich steam. It is suitable for saunas of many sizes: the smallest for heating saunas from 5 - 9 m<sup>3</sup>, and the largest for saunas up to 13 m<sup>3</sup>. The APOLLO is one of the best standard heaters. We recommend it to all sauna friends who like genuine and simple things in life.

Available in chrome. Recommended amount of rocks 23 kg. Be sure to check safety distances on pages 47 - 58.



## SOFTHOT

SOFTHOT heater provides bathers with modern design and the possibility to adapt the heater to bathing preferences. The rock compartment is adjustable from 15 to 35 kgs of rock. A small quantity of rocks heats up quickly to produce hot bathing atmosphere, on the other hand a large quantity of rocks results in soft, well-rounded steam. The controls are handy located on the side of the heater. SOFTHOT ST model is with built-in timer (9 hours pre heating and 3 hours running time) and thermostat. The D model can be used with traditional type control units.

Available in chrome. Recommended amount of rocks 15 - 35 kg. Be sure to check safety distances on pages 47 - 58.



## KLIMA VITA

The KLIMA VITA is a basic combination heater with simple digital control unit for controlling temperature, time and humidity in a sauna. Available with manually filled water tank.

Available in chrome. Recommended amount of rocks 23 kg. Be sure to check safety distances on pages 47 - 58.



## MISTY

The MISTY heater is a combination of sauna heater and built-in steam generator. The elegant design is combined with modern technology: water tank with manual filling, separate heating element for water, all necessary safety features and a lot more.

Available in chrome. Recommended amount of rocks 23 kg. Be sure to check safety distances on pages 47 - 58.



# PROFESSIONAL

Happy guests come back. It's the golden rule of the leisure and hospitality trades, and a key to success for professional sports venues. Helo has decades of experience in supplying the genuine sauna and steam experience to professional industries. With our line of professional electric heaters, we can help you create an inviting, relaxing environment that adds real value and generates positive word of mouth and returns for your facility. And you can always count on dependable advice for finding the exact right heater solution to your professional sauna needs.



- Quality engineered for problem-free performance and easy maintenance — specifically for the needs of professional or commercial sauna rooms.
- An investment that can pay for itself by adding value to your facilities and ensuring customer satisfaction and returns.
- Proven performance, SKLE has been the industry standard for more than 25 years.
- Cost-effective energy use without compromise to climate quality.
- Available with a choice of intuitive control systems — easy to learn and use.



## LAAVA

The freestanding LAAVA heater is designed for large, commercial sauna rooms, LAAVA heaters are robust, easy to maintain and their 60 kg of stones create an attractively soothing sauna climate. LAAVA's separate control unit makes instant regulation of the heater's high capabilities very easy.

Graphite, 475 x 700 x 515 mm (wxhxd), Recommended amount of rocks 60 kg. Be sure to check safety distances on pages 47 - 58.

## MAGMA

MAGMA is specially engineered for larger commercial saunas that require durable, powerful and cost-efficient heaters—without compromising on the rich steam and soothing sauna atmosphere. Available in a variety of models to suit different business needs, MAGMA heaters also offer a choice of traditional and digital control systems. All MAGMA heaters accommodate 120 kg of rocks, ensuring a genuinely ideal sauna climate for guests.

Graphite-coloured, 880 x 700 x 510 mm (wxhxd). Holds a full 120 kg of stones. Be sure to check safety distances on pages 47 - 58.



### CONTROL UNITS

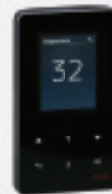
Magma and Laava heaters are available with your choice of T2\*, Digi I\*\* or Digi II\*\* control units. T2 has the ability to pre-program the heating of your sauna up to a week ahead. Digi I and Digi II offer preset time control, making it easier and more cost-effective to keep the sauna fully heated during its busiest periods and on standby with less frequent use.

The control has keys for temperature adjustment, light and fan operation. Digi II has 5 different operation languages (Finnish, Swedish, English, German and Dutch) and it is possible to preset 4 individual bathing programmes. Control units are flush or surface mounted outside the sauna room.

If you prefer, you can also choose from a selection of easy-to-use analogue control units for your Laava or Magma heater:

**Laava:** OK 33 PS-3 or OK 33 PUi.

**Magma:** OT 22 PS-3/WEI or OT 22 PUi/WEI.



T2



Digi I



Digi II



## OCTA

The OCTA heater is based on traditional technology. This heater is ideal for saunas of all shapes, and can even be placed in the middle of a sauna. Stately in appearance, OCTA heaters are suitable for saunas sized from 9 – 24 m<sup>3</sup>.

Color: chrome. Recommended amount of rocks 60 kg. Be sure to check safety distances on pages 47 – 58. Available with your choice of Digi I or Digi II control panels with WE 4 contactor box.



## SEIDANKIVI

SEIDANKIVI is the ideal choice for exclusive commercial or club saunas. Featuring state-of-art technology and features behind its stylish soap stone cover, SEIDANKIVI fills the sauna with indulgent billows of soft, gentle heat and steam in even waves. A one-of-a-kind experience, SEIDANKIVI will ensure your guests are still talking about the genuine sauna experience you provided long after they've left.

Available with your choice of Digi I or Digi II control panels with WE 4 contactor box. 610 x 810 x 610 mm (wxhxd). Recommended amount of rocks 60 kg. Be sure to check safety distances on pages 47 – 58.





## SKLE & SKLA

The large SKLE and SKLA heaters have been an industry standard for public premises for more than 25 years and are suitable for saunas sized from 8 – 46 m<sup>3</sup>. The SKLE heaters can also be equipped with a unit that generates steam, offering bathers varied sauna enjoyment ranging from the traditional and gently warm saunas to a warm moist steam sauna. This is an exceptional choice for public saunas, and offers a pleasant bathing experience. The functions are easy to select from a separate control panel.

Available in chrome. Recommended amount for rocks 60 kg for SKLE and 120 kg for SKLA heater. Be sure to check safety distances on pages 47 – 58.



# Control units

Managing the temperature, timing and comfort features of your sauna should be as relaxing as the bath itself. Depending on the option you choose, HELO sauna control units make it easy to regulate the climate, pre-heat the cabin so it's ready when you are or just soften the lights — all with a few simple taps on the touchpad.

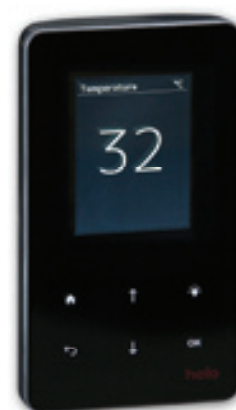
## T1 & T2

These new control panels are designed to control the heater or steam bath – and they are good looking too. They are equipped with touch-control and shows temperature and time in operating mode. They are also equipped with a switch for lighting, easy control the temperature, switch between Fahrenheit/Celsius, 12 h/24 h format, multiple language and other more advanced settings and testing possibility. T2 is basically the same control as T1, but has additional functions as the ability to pre-program the heating of your sauna up to 23 hours ahead.

**Compatible with heaters:**

T1: ROXX, CAVA, RING, ROCHER AND FONDA (DET-MODELS ONLY).

T2: LAAVA, MAGMA, SKLE, SKLA AND FONDA DUO.



## EASY

Helo Easy is the latest innovation in sauna control units. The fixed heating time is max. 6 hours with 5-step “+” and “-” temperature adjustment. Helo Easy can be flush or surface mounted outside the sauna room and can be used with a low voltage connection for sauna heaters such as Cava and Pikkutonttu. Size 70 x 70 x 30 mm (wxhxd), delivery includes 3 different frames.

**Compatible with heaters:**

CUP, ROXX, CAVA, RING, ROCHER, FERRO AND PIKKUTONTTU (DE-MODELS ONLY).



## MIDI

The Helo Midi control unit offers the extra convenience of being installed inside the sauna room\*. Preset time is 0 – 23 hours and heating time 0 – 6 hours. You can control the temperature and the display shows you both the set temperature and the actual temperature. The sauna light can also be operated via Helo Midi. Helo Midi is available in 2 different frame colours: white and chrome.

**Compatible with heaters:**

CUP, ROXX, CAVA, RING, ROCHER, FERRO AND PIKKUTONTTU (DE-MODELS ONLY).



## EC50

The EC50 control panel makes it simple and economical to have complete control of your sauna. The panel blends discretely and elegantly into your bathroom with its clean and essential design.

It has an easy-to-read display for convenient control of the start-up time, temperature and lighting. The panel can be set for 0-3 hours of heating time. You can also set a countdown between 0-10 hours for the heater to start. The panel incorporates a child-proof code lock to prevent accidental operation. The EC50 with its practical features is a smart choice for anyone who wants precise control of their sauna – at an affordable price.

**Compatible with heaters:**

ROXX, CAVA, RING, ROCHER AND FONDA (DET-MODELS ONLY).



## DIGI I

DIGI I is a simple but smart solution that gives you most basic comfort functions at the touch of a button. DIGI I lets you preheat your sauna anytime within a 24 hour period, ensuring a relaxing and refreshing climate is ready when you are without having to wait. The digital touch pad is also your control for temperature, lighting and the fan. DIGI I is designed for wall or flush mounting outside the sauna.

**Compatible with heaters:**

CUP, ROXX, CAVA, RING, ROCHER, FERRO AND PIKKUTONTTU (DE-MODELS ONLY).  
OCTA - with WE 4, LAAVA, - with WE 4, SEIDANKIVI - with WE 4, MAGMA - with WE 5.



## DIGI II

The Helo Digi II control panel can be adapted for home sauna heaters such as Cava and Pikkutonttu, or for commercial type heaters such as SKLE, Octa and Seidankivi. With preheating timings from 0 – 24 hours, set heating time of 0 – 6 hours, and one-touch preset bathing programmes, DIGI II gives you maximum flexibility in managing comfort. You'll also find keys for temperature adjustment, light and fan operation, and the high-visibility LCD display provides information in your choice 5 languages (Finnish, Swedish, English, German and Dutch). Flush or surface mounted outside the sauna, Helo Digi II has a total size of 138 x 173 x 34 mm (wxhxd).

**Compatible with heaters:**

CUP, ROXX, CAVA, RING, ROCHER, FERRO AND PIKKUTONTTU (DE-MODELS ONLY).  
OCTA - with WE 4, LAAVA - with WE 4, SEIDANKIVI - with WE 4, MAGMA - with WE 5.





# WOOD BURNING HEATERS





It is hard to deny the charm, tradition and feeling of well-being a genuine wood burning sauna heater provides. Helo has perfected the art of preserving the very best qualities of wood-fired sauna heaters in a modern, technologically-advanced interpretation. Each expressed in its own unique way. And always with genuine warmth.

# Keeping the flame alive

When your heart is set on the romantic and traditional appeal of a wood burning heater, it's nice to have options. We'll be happy to help suggest solutions for your sauna configuration or needs — simply call your local Helo dealer.

## K-line & KL-line

Helo K-line models are the classic models in our wood burning heater range. With an extra large space for stones and our double air circulation system, Helo K-line fires the genuinely relaxing sauna experience in rooms from 5 – 22 m<sup>3</sup>. Also available in KL-models, an insulated glass door makes it easy to stoke the fire while offering a comforting view of flames.

The K and KL heater line is available in 3 different sizes. Be sure to check safety distances on pages 47 – 58.



## SIL-line

The Helo SIL offers you a special feature, doubling as a powerful heater in the sauna and a fireplace in your change room. Mounted in the wall separating the rooms, Helo SIL access is from the door in the change room. On the sauna side, the twin circulation system generates a perfect sauna climate with very low wood use. An interesting way to add a little special to your outdoor sauna!

The SIL heater line is available in 3 different sizes. Be sure to check safety distances on pages 47 – 58.



## ROCHER WOOD

The new ROCHER WOOD uniquely combines a tower of sauna stones with traditional wood burning. The 140 kg mass of stones is held in a brushed steel brazier, radiating heat in every direction. The wood burning twin circulation chamber features advanced air induction for very efficient wood use, low emissions, and the even spread of heat throughout the stones, top to bottom. This wood-burning heater is also available in a through-the-wall model, ROCHER WOOD SL.

Be sure to check safety distances on pages 47 - 58.



Rocher Wood L

Rocher Wood SL

## UKKOTONTTU

UKKOTONTTU belongs to the Tonttu family of sauna heaters conceived by renown designer Ristomatti Ratia. With unique features such as its patented triple level flame circulation and heat restoring lid, UKKOTONTTU generates the ultimate climate for true sauna comfort. At the same time, it impresses with its smooth conical exterior and cast-iron framed window. Exclusive, beautiful and breathtakingly genuine. The pleasures of a wood burning sauna heater include knowing it will always deliver the even heat and climate of a genuine sauna experience. UKKOTONTTU's patented triple level flame circulation not only distributes heat efficiently, it only requires a few logs to achieve perfect bathing temperatures.

Ukkotonttu comes in black. Be sure to check safety distances on pages 47 - 58.



### Unique design

Ukkotonttu is part of the RATIA collection, ensuring world-class design with the latest innovations and functionalities.



## HIIDENKIVI

HIIDENKIVI - the soapstone covered wood burning sauna heater. Sturdy, classic quality soapstone shell makes a design statement, infusing your sauna atmosphere with a sense of comfort and exclusivity. At the same time, the soapstone has excellent heat retention properties, storing heat and releasing it in even waves of genuine climate comfort.

Hiidenkivi is a soapstone covered wood burning sauna heater available. Be sure to check safety distances on pages 47 - 58.

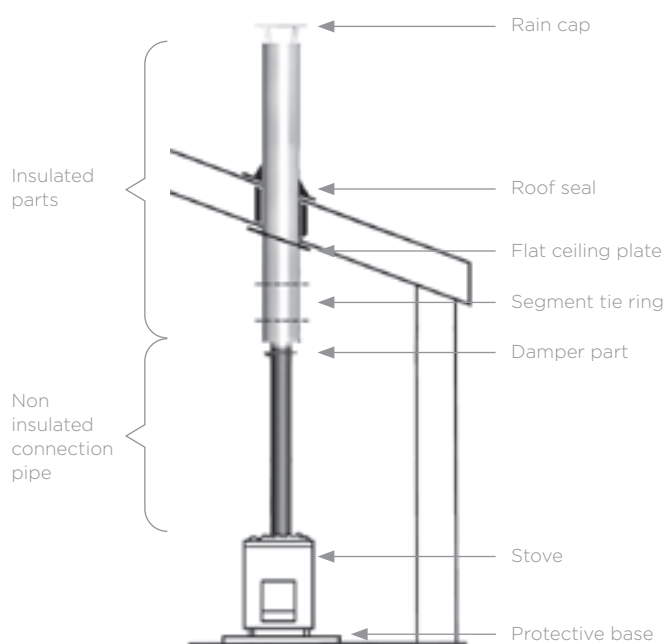


# Chimneys and accessories

The heater may be the heart of your sauna, but there is more to creating a truly genuine sauna experience. Helo offers a number of chimneys and accessories that maximise your safety and comfort – and help you finish your personal centre for well-being in style.

## CHIMNEYS

Helo-chimneys are high quality, safe, CE certified and very easy to install. The chimney can run straight through the ceiling. Do remember to ask the relevant authorities about local building ordinances first.



## DESIGNED TO LAST

Chimneys are exposed to many kinds of stresses both on the outside and inside. In addition to the heat, chimneys need to withstand temperature changes, moisture and flue gasses. The internal piping in Helo-chimneys is made of strong, acid resistant steel. We use mineral wool material for insulation and the outer mantle is stainless steel. With our modular chimneys almost any building can be equipped with a stove if it is at all permitted according to local building ordinances.

Temperature class T600, diameter 115 mm, safety distance 50 mm.

## ACCESSORIES



### HELO CHIMNEY WATER HEATER

Chimney with mounted  
water tank (24 litres) in  
stainless steel.

(Art. 014050)



### CONICAL TUBE

Conical tube in  
stainless steel.

(Art. 014081)



### CONNECTION SLEEVE

Connection sleeve in  
stainless steel.

(Art. 014082)



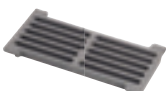
### CAST IRON GLASS DOOR

Cast iron glass door.  
Color: black.

(Art. 014085)

Iron door: black  
(Art. 018004)

Glass door KL-mod-  
els: chrome  
(Art. 014094)



### GRATE

Grate 160 x 330 mm, black.  
(Art. 014052)

Grate 135 x 290 mm, black.  
(Art. 098000)



## EXTENSION TUBES

Extension tubes in  
stainless steel.

1,0 meter - (Art. 014075)  
0,5 meter - (Art. 014076)  
0,3 meter - (Art. 014077)  
60° - (Art. 014078)  
90° - (Art. 014079)



### DAMPER TUBE

Black damper tube.  
(Art. 014080)



### ADJUSTABLE FEET SET

Adjustable feet set  
(4 pcs.). Stainless steel.  
(Art. 014053)



### ADJUSTABLE BASE PLATES FOR HELO WOOD BURNING HEATERS

Grey base plate for  
Ukkotonttu heater.  
(Art. 014058)

Grey base plate for  
Helo wood burning  
heaters (except  
Ukkotonttu).  
(Art. 014056)

### ASH TRAY

Ash tray 170 x 300 mm.  
(Art. 018003)  
Ash tray 130 x 330 mm.  
(Art. 018005)



# TECHNICAL SPECIFICATIONS

On the following pages, all of our heaters' technical specifications are shown. If you need any additional help or have questions, please contact your local Helo dealer or visit our website at [www.helosauna.com](http://www.helosauna.com).

# Fonda Duo

## TECHNICAL SPECIFICATIONS

HEATER	HEATING POWER (kW)	SAUNA SIZE (m <sup>3</sup> )	STONE VOLUME (kg)	Dim. (WxHxD) (MM)	CONTROL UNIT OPTIONS	MOUNTING
<b>Fonda Duo 4.4</b>	4.4	4 - 6	20	448 x 565 x 364	1*	Wall/floor
<b>Fonda Duo 6.6</b>	6.6	5 - 9	20	448 x 565 x 364	1*	Wall/floor
<b>Fonda Duo 8.0</b>	8.0	8 - 12	20	448 x 565 x 364	1*	Wall/floor

**Extras:** Legs are available by special order.

**\*Controls:** T2.

## SAFETY DISTANCES

HEATER	SIDE (MM)	FRONT (MM)	BACK (MM)	OVER (MM)	UNDER (MM)
<b>Fonda Duo 4.4</b>	50	50	-	1135	100
<b>Fonda Duo 6.6</b>	50	50	-	1135	100
<b>Fonda Duo 8.0</b>	50	50	-	1135	100



# Fonda DET & Fonda ST

## TECHNICAL SPECIFICATIONS

HEATER	HEATING POWER (kW)	SAUNA SIZE (m <sup>3</sup> )	STONE VOLUME (kg)	Dim. (WxHxD) (MM)	CONTROL UNIT OPTIONS	MOUNTING
<b>Fonda DET/ST 4.4</b>	4.4	4 - 6	20	448 x 565 x 364	2*	Wall/floor
<b>Fonda DET/ST 6.6</b>	6.6	5 - 9	20	448 x 565 x 364	2*	Wall/floor
<b>Fonda DET/ST 8.0</b>	8.0	8 - 12	20	448 x 565 x 364	2*	Wall/floor

**Extras:** Legs are available by special order.

**\*Controls:** Fonda DET uses the T1 and EC50 control units. Fonda ST has an integrated control panel.

## SAFETY DISTANCES

HEATER	SIDE (MM)	FRONT (MM)	BACK (MM)	OVER (MM)	UNDER (MM)
<b>Fonda DET/ST 4.4</b>	50	50	-	1135	100
<b>Fonda DET/ST 6.6</b>	50	50	-	1135	100
<b>Fonda DET/ST 8.0</b>	50	50	-	1135	100



## Rocher

### TECHNICAL SPECIFICATIONS

HEATER	HEATING POWER (kW)	SAUNA SIZE (m <sup>3</sup> )	STONE VOLUME (kg)	Dim. (WxHxD) (MM)	CONTROL UNIT OPTIONS	MOUNTING
70 D/DE/DET	6.8	5 - 9	100	425 x 1140 x 425	4/4/1*	Floor/Bench
105 D/DE/DET	10.5	9 - 15	100	425 x 1140 x 425	4/4/1*	Floor/Bench

**Extras:** Soap stone collar, glass collar (satin) and chrome collar.

**\*Controls:** Models D/DE: Easy, Midi, Digi I, Digi II. Model DET: T1, EC50.

### SAFETY DISTANCES

HEATER	SIDE (MM)	FRONT (MM)	BACK (MM)	OVER (MM)	UNDER (MM)
70 D/DE/DET	60	60	60	770	-
105 D/DE/DET	60	60	60	770	-



## Cava

### TECHNICAL SPECIFICATIONS

HEATER	HEATING POWER (kW)	SAUNA SIZE (m <sup>3</sup> )	STONE VOLUME (kg)	Dim. (WxHxD) (MM)	CONTROL UNIT OPTIONS	MOUNTING
6 D/DE/DET	6.0	6 - 10	30 + 15	490 x 830 x 230	4/4/1*	Floor/Bench
9 D/DE/DET	9.0	9 - 13	30 + 15	490 x 830 x 230	4/4/1*	Floor/Bench

**Extras:** Soap stone collar.

**\*Controls:** Models D/DE: Easy, Midi, Digi I, Digi II. Model DET: T1, EC50.

### SAFETY DISTANCES

HEATER	SIDE (MM)	FRONT (MM)	BACK (MM)	OVER (MM)	UNDER (MM)
6 D/DE/DET	100	300	-	1070	-
9 D/DE/DET	100	350	-	1070	-



## Fusion

### TECHNICAL SPECIFICATIONS

HEATER	HEATING POWER (kW)	SAUNA SIZE (m <sup>3</sup> )	STONE VOLUME (kg)	Dim. (WxHxD) (MM)	CONTROL UNIT OPTIONS	MOUNTING
Fusion 60	6.0	5 - 9	23	415 x 580 x 415	1*	Floor/Bench
Fusion 90	9.0	9 - 13	23	415 x 580 x 415	1*	Floor/Bench

**Extras:** Kit for auto-filling of the tank.

**\*Controls:** Included with the heater.

### SAFETY DISTANCES

HEATER	SIDE (MM)	FRONT (MM)	BACK (MM)	OVER (MM)	UNDER (MM)
Fusion 60	70	100	-	1150	-
Fusion 90	100	150	-	1150	-





# Saunatonnttu

## TECHNICAL SPECIFICATIONS

HEATER	HEATING POWER (kW)	SAUNA SIZE (m <sup>3</sup> )	STONE VOLUME (kg)	Dim. (WxHxD) (MM)	CONTROL UNIT OPTIONS	MOUNTING
Saunatonnttu 3	3.4	3 - 8	100	500 x 1090 x 500	1*	Floor/Bench
Saunatonnttu 4	4.8	5 - 11	100	500 x 1090 x 500	1*	Floor/Bench
Saunatonnttu 6	6.4	7 - 14	100	500 x 1090 x 500	1*	Floor/Bench
Saunatonnttu 8	8.0	9 - 17	100	500 x 1090 x 500	1*	Floor/Bench

\*Controls: Included with the heater.

## SAFETY DISTANCES

HEATER	SIDE (MM)	FRONT (MM)	BACK (MM)	OVER (MM)	UNDER (MM)
Saunatonnttu 3	30	30	-	800	-
Saunatonnttu 4	30	30	-	800	-
Saunatonnttu 6	30	30	-	800	-
Saunatonnttu 8	30	30	-	800	-



# Rondo

## TECHNICAL SPECIFICATIONS

HEATER	HEATING POWER (kW)	SAUNA SIZE (m <sup>3</sup> )	STONE VOLUME (kg)	Dim. (WxHxD) (MM)	CONTROL UNIT OPTIONS	MOUNTING
Rondo 450	4.5	5 - 8	90	500 x 850 x 500	1*	Floor/Bench
Rondo 650	6.5	7 - 13	90	500 x 850 x 500	1*	Floor/Bench
Rondo 960	9.6	11 - 18	90	500 x 850 x 500	1*	Floor/Bench

\*Controls: Included with the heater.

## SAFETY DISTANCES

HEATER	SIDE (MM)	FRONT (MM)	BACK (MM)	OVER (MM)	UNDER (MM)
Rondo 450	10	10	10	1040	-
Rondo 650	10	10	10	1040	-
Rondo 950	10	10	10	1040	-



# Taika

## TECHNICAL SPECIFICATIONS

HEATER	HEATING POWER (kW)	SAUNA SIZE (m <sup>3</sup> )	STONE VOLUME (kg)	Dim. (WxHxD) (MM)	CONTROL UNIT OPTIONS	MOUNTING
Taika 80	8.0	8 - 13	65	500 x 850 x 500	1*	Floor
Taika 100	9.9	9 - 15	65	500 x 850 x 500	1*	Floor
Taika 120	12.0	10 - 18	65	500 x 850 x 500	1*	Floor

\*Controls: Smart with WE 11 contactor box.

## SAFETY DISTANCES

HEATER	SIDE (MM)	FRONT (MM)	BACK (MM)	OVER (MM)	UNDER (MM)
Taika 80	30	30	-	1130	-
Taika 100	30	30	-	1130	-
Taika 120	30	30	-	1130	-



# Pikkutonnttu

## TECHNICAL SPECIFICATIONS

HEATER	HEATING POWER (kW)	SAUNA SIZE (m <sup>3</sup> )	STONE VOLUME (kg)	Dim. (WxHxD) (MM)	CONTROL UNIT OPTIONS	MOUNTING
45 D/DE	4.5	3 – 8	70	460 x 990 x 460	4*	Floor/Bench
65 D/DE	6.5	6 – 12	70	460 x 990 x 460	4*	Floor/Bench
90 D/DE	9.0	9 – 16	70	460 x 990 x 460	4*	Floor/Bench

\*Controls: Easy, Midi, Digi I, Digi II.

## SAFETY DISTANCES

HEATER	SIDE (MM)	FRONT (MM)	BACK (MM)	OVER (MM)	UNDER (MM)
45 D/DE	40	40	-	900	-
65 D/DE	150	150	-	900	-
90 D/DE	150	150	-	900	-



# Ferro

## TECHNICAL SPECIFICATIONS

HEATER	HEATING POWER (kW)	SAUNA SIZE (m <sup>3</sup> )	STONE VOLUME (kg)	Dim. (WxHxD) (MM)	CONTROL UNIT OPTIONS	MOUNTING
90 D/DE	9.0	8 – 13	50	500 x 760 x 430	4*	Floor
105 D/DE	10.5	9 – 15	50	500 x 760 x 430	4*	Floor
120 D/DE	12.0	10 – 18	50	500 x 760 x 430	4*	Floor

\*Controls: Easy, Midi, Digi I, Digi II.

## SAFETY DISTANCES

HEATER	SIDE (MM)	FRONT (MM)	BACK (MM)	OVER (MM)	UNDER (MM)
90 D/DE	60	60	-	1140	-
105 D/DE	60	60	-	1140	-
120 D/DE	60	60	-	1140	-



# Ring Wall

## TECHNICAL SPECIFICATIONS

HEATER	HEATING POWER (kW)	SAUNA SIZE (m <sup>3</sup> )	STONE VOLUME (kg)	Dim. (WxHxD) (MM)	CONTROL UNIT OPTIONS	MOUNTING
Ring Wall 45 D/ST	4.5	4 – 6	37	445 x 525 x 335	4/1*	Wall
Ring Wall 60 D/ST	6.0	5 – 9	37	445 x 525 x 335	4/1*	Wall
Ring Wall 80 D/ST	8.0	8 – 13	37	445 x 525 x 335	4/1*	Wall

\*Controls: Models D: Easy, Midi, Digi I or Digi II with separate contactor box. Models ST: built-in control.

## SAFETY DISTANCES

HEATER	SIDE (MM)	FRONT (MM)	BACK (MM)	OVER (MM)	UNDER (MM)
Ring Wall 45 D/ST	50	50	-	1200	120
Ring Wall 60 D/ST	70	70	-	1250	120
Ring Wall 80 D/ST	100	100	-	1250	120



# RoxX

## TECHNICAL SPECIFICATIONS

HEATER	HEATING POWER (kW)	SAUNA SIZE (m <sup>3</sup> )	STONE VOLUME (kg)	Dim. (WxHxD) (MM)	CONTROL UNIT OPTIONS	MOUNTING
45 D/DE/DET	4.5	3 - 8	30 - 40	460 x 990 x 460	4/4/1*	Floor/Bench
65 D/DE/DET	6.5	6 - 12	30 - 40	460 x 990 x 460	4/4/1*	Floor/Bench
90 D/DE/DET	9.0	9 - 16	30 - 40	460 x 990 x 460	4/4/1*	Floor/Bench

**Extras:** Soap stone collar.

**\*Controls:** Models D/DE: Easy, Midi, Digi I, Digi II. Model DET: T1.



## SAFETY DISTANCES

HEATER	SIDE (MM)	FRONT (MM)	BACK (MM)	OVER (MM)	UNDER (MM)
45 D/DE/DET	40	40	-	900	-
65 D/DE/DET	100	300	-	900	-
90 D/DE/DET	100	350	-	900	-

# Ring

## TECHNICAL SPECIFICATIONS

HEATER	HEATING POWER (kW)	SAUNA SIZE (m <sup>3</sup> )	STONE VOLUME (kg)	Dim. (WxHxD) (MM)	CONTROL UNIT OPTIONS	MOUNTING
60 D/DE/DET	6.0	5 - 9	60	420 x 800 x 420	4/4/1*	Floor
80 D/DE/DET	8.0	6 - 13	60	420 x 800 x 420	4/4/1*	Floor

**Extras:** Soap stone collar, glass collar (satin) and chrome collar.

**\*Controls:** Models D/DE: Easy, Midi, Digi I, Digi II. Model DET: T1.



## SAFETY DISTANCES

HEATER	SIDE (MM)	FRONT (MM)	BACK (MM)	OVER (MM)	UNDER (MM)
60 D/DE/DET	100	100	-	1140	-
80 D/DE/DET	100	100	-	1140	-

# Cup

## TECHNICAL SPECIFICATIONS

HEATER	HEATING POWER (kW)	SAUNA SIZE (m <sup>3</sup> )	STONE VOLUME (kg)	Dim. (WxHxD) (MM)	CONTROL UNIT OPTIONS	MOUNTING
Cup 30 D/ST	3.0	2 - 4	15	430 x 620 x 310	3/1*	Wall
Cup 45 D/DE/ST	4.5	3 - 6	15	430 x 620 x 310	3/4/1*	Wall
Cup 60 D/DE/ST	6.0	5 - 9	23	430 x 620 x 310	3/4/1*	Wall
Cup 80 D/DE/ST	8.0	8 - 13	23	430 x 620 x 310	3/4/1*	Wall
Cup 90 D/DE/ST	9.0	9 - 14	23	430 x 620 x 310	3/4/1*	Wall

**\*Controls:** Models D: OT 2 PS-1 (1-phase), OT 2 PS-3 (3-phase), OT 2 PUi and OT 2 PLE. Models DE: Easy, Midi, Digi I, Digi II. Models ST: built-in control.

## SAFETY DISTANCES

HEATER	SIDE (MM)	FRONT (MM)	BACK (MM)	OVER (MM)	UNDER (MM)
Cup 30 D/ST	30	50	-	1200	120
Cup 45 D/DE/ST	50	80	-	1200	120
Cup 60 D/DE/ST	70	100	-	1250	120
Cup 80 D/DE/ST	100	150	-	1250	120
Cup 90 D/DE/ST	100	200	-	1250	120



# Soft Hot

## TECHNICAL SPECIFICATIONS

HEATER	HEATING POWER (kW)	SAUNA SIZE (m <sup>3</sup> )	STONE VOLUME (kg)	Dim. (WxHxD) (MM)	CONTROL UNIT OPTIONS	MOUNTING
SKSO 45 D/ST	4.5	3 - 6	15 - 25	560 x 475 x 300	3/1*	Wall
SKSO 60 D/ST	6.0	5 - 9	15 - 35	560 x 475 x 300	3/1*	Wall
SKSO 80 D/ST	8.0	8 - 12	15 - 35	560 x 475 x 300	3/1*	Wall
SKSO 90 D/ST	9.0	9 - 13	15 - 35	560 x 475 x 300	3/1*	Wall

**Extras:** Floor stand, dust collector.

**\*Controls:** Models D: OT 2 PS-3, OT 2 PUI and OT 2 PLE. Models ST: built-in control.

## SAFETY DISTANCES

HEATER	SIDE (MM)	FRONT (MM)	BACK (MM)	OVER (MM)	UNDER (MM)
SKSO 45 D/ST	40	80	-	1100	120
SKSO 60 D/ST	45	100	-	1100	120
SKSO 80 D/ST	75	130	-	1100	150
SKSO 90 D/ST	80	150	-	1100	150



# Klima Vita

## TECHNICAL SPECIFICATIONS

HEATER	HEATING POWER (kW)	SAUNA SIZE (m <sup>3</sup> )	STONE VOLUME (kg)	Dim. (WxHxD) (MM)	CONTROL UNIT OPTIONS	MOUNTING
Klima Vita 60	6.0	5 - 9	25	615 x 430 x 375	1*	Wall
Klima Vita 80	8.0	8 - 12	25	615 x 430 x 375	1*	Wall
Klima Vita 90	9.0	9 - 13	25	615 x 430 x 375	1*	Wall

**\*Controls:** OT 2 PLD.

## SAFETY DISTANCES

HEATER	SIDE (MM)	FRONT (MM)	BACK (MM)	OVER (MM)	UNDER (MM)
Klima Vita 60	100	60	-	1100	180
Klima Vita 80	180	120	-	1100	180
Klima Vita 90	180	120	-	1100	180



# Junior

## TECHNICAL SPECIFICATIONS

HEATER	HEATING POWER (kW)	SAUNA SIZE (m <sup>3</sup> )	STONE VOLUME (kg)	Dim. (WxHxD) (MM)	CONTROL UNIT OPTIONS	MOUNTING
Junior 30	3.0	2 - 4	10	290 x 600 x 200	1*	Wall

**\*Controls:** Included with the heater.

## SAFETY DISTANCES

HEATER	SIDE (MM)	FRONT (MM)	BACK (MM)	OVER (MM)	UNDER (MM)
Junior 30	50	120	-	1200	120



# Mini SA

## TECHNICAL SPECIFICATIONS

HEATER	HEATING POWER (kW)	SAUNA SIZE (m <sup>2</sup> )	STONE VOLUME (kg)	Dim. (WxHxD) (MM)	CONTROL UNIT OPTIONS	MOUNTING
Mini SA 30 T	3.0	2.0 - 4.0	10	370 x 420 x 200	Built in*	Wall

\*Controls: Integrated in the heater.



## SAFETY DISTANCES

HEATER	SIDE (MM)	FRONT (MM)	BACK (MM)	OVER (MM)	UNDER (MM)
Mini SA 30 T	90	60	200	1250	120

# Lumi

## TECHNICAL SPECIFICATIONS

HEATER	HEATING POWER (kW)	SAUNA SIZE (m <sup>2</sup> )	STONE VOLUME (kg)	Dim. (WxHxD) (MM)	CONTROL UNIT OPTIONS	MOUNTING
Lumi 45 ST 230V	4.5	3 - 6	20	505 x 480 x 310	Built in*	Wall
Lumi 45 ST 400V	4.5	3 - 6	20	505 x 480 x 310	Built in*	Wall
Lumi 70 ST 400V	6.8	5 - 10	20	505 x 480 x 310	Built in*	Wall
Lumi 90 ST 400V	9.0	8 - 13	20	505 x 480 x 310	Built in*	Wall

\*Controls: Integrated in the heater.



## SAFETY DISTANCES

HEATER	SIDE (MM)	FRONT (MM)	BACK (MM)	OVER (MM)	UNDER (MM)
45 ST 230V	50	80	-	1200	120
45 ST 400V	50	80	-	1200	120
70 ST 400V	80	100	-	1250	120
90 ST 400V	100	150	-	1250	120

# Lumi Hot Top

## TECHNICAL SPECIFICATIONS

HEATER	HEATING POWER (kW)	SAUNA SIZE (m <sup>2</sup> )	STONE VOLUME (kg)	Dim. (WxHxD) (MM)	CONTROL UNIT OPTIONS	MOUNTING
45 ST	4.5	3 - 6	20	505 x 480 x 310	Built in*	Wall
70 ST	6.8	5 - 10	20	505 x 480 x 310	Built in*	Wall
90 ST	9.0	8 - 13	20	505 x 480 x 310	Built in*	Wall

\*Controls: Integrated in the heater.



## SAFETY DISTANCES

HEATER	SIDE (MM)	FRONT (MM)	BACK (MM)	OVER (MM)	UNDER (MM)
45 ST	50	50	-	1200	120
70 ST	80	80	-	1200	120
90 ST	100	150	-	1200	120

# Apollo

## TECHNICAL SPECIFICATIONS

HEATER	HEATING POWER (kW)	SAUNA SIZE (m <sup>3</sup> )	STONE VOLUME (kg)	Dim. (WxHxD) (MM)	CONTROL UNIT OPTIONS	MOUNTING
<b>60 D/DE/ST</b>	6.0	5 - 9	25	580 x 415 x 300	3/4/1*	Wall
<b>80 D/DE/ST</b>	8.0	8 - 13	25	580 x 415 x 300	3/4/1*	Wall
<b>90 D/DE/ST</b>	9.0	9 - 14	25	580 x 415 x 300	3/4/1*	Wall

\*Controls: Models D: OT 2 PS-3, OT 2 PUI or OT 2 PLE. Models DE: Easy, Midi, Digi I or Digi II. Models ST: built-in.

## SAFETY DISTANCES

HEATER	SIDE (MM)	FRONT (MM)	BACK (MM)	OVER (MM)	UNDER (MM)
<b>60 D/DE/ST</b>	70	100	-	1250	120
<b>80 D/DE/ST</b>	100	150	-	1250	120
<b>90 D/DE/ST</b>	100	200	-	1250	120



# Misty

## TECHNICAL SPECIFICATIONS

HEATER	HEATING POWER (kW)	SAUNA SIZE (m <sup>3</sup> )	STONE VOLUME (kg)	Dim. (WxHxD) (MM)	CONTROL UNIT OPTIONS	MOUNTING
<b>Misty 60 MD</b>	6.0	5 - 9	25	580 x 415 x 415	1*	Wall
<b>Misty 80 MD</b>	8.0	8 - 12	25	580 x 415 x 415	1*	Wall
<b>Misty 90 MD</b>	9.0	9 - 13	25	580 x 415 x 415	1*	Wall

\*Controls: OT 2 PED.

## SAFETY DISTANCES

HEATER	SIDE (MM)	FRONT (MM)	BACK (MM)	OVER (MM)	UNDER (MM)
<b>Misty 60 MD</b>	70	100	-	1250	120
<b>Misty 80 MD</b>	100	150	-	1250	150
<b>Misty 90 MD</b>	100	200	-	1250	150



# Laava

## TECHNICAL SPECIFICATIONS

HEATER	HEATING POWER (kW)	SAUNA SIZE (m <sup>3</sup> )	STONE VOLUME (kg)	Dim. (WxHxD) (MM)	CONTROL UNIT OPTIONS	MOUNTING
<b>901</b>	9.0	8 - 13	60	540 x 725 x 500	3*	Floor
<b>1051</b>	10.5	9 - 15	60	540 x 725 x 500	3*	Floor
<b>1201</b>	12.0	10 - 18	60	540 x 725 x 500	3*	Floor
<b>1501</b>	15.0	14 - 24	60	540 x 725 x 500	3*	Floor

\*Controls: Digi I or Digi II with contactor box WE 4. T2 with contactor box WE 14.

## SAFETY DISTANCES

HEATER	SIDE (MM)	FRONT (MM)	BACK (MM)	OVER (MM)	UNDER (MM)
<b>901</b>	80	80	110	1200	-
<b>1051</b>	80	80	110	1200	-
<b>1201</b>	120	120	120	1400	-
<b>1501</b>	120	120	120	1400	-



# Magma

## TECHNICAL SPECIFICATIONS

HEATER	HEATING POWER (kW)	SAUNA SIZE (m <sup>3</sup> )	STONE VOLUME (kg)	Dim. (WxHxD) (MM)	CONTROL UNIT OPTIONS	MOUNTING
<b>MAGMA 181</b>	18.0	18 – 30	120	895 x 700 x 520	3*	Floor
<b>MAGMA 210</b>	21.0	24 – 36	120	895 x 700 x 520	3*	Floor
<b>MAGMA 260</b>	26.0	30 – 46	120	895 x 700 x 520	3*	Floor

\*Controls: Digi I or Digi II with contactor box WE 5. T2 with contactor box WE 14.

## SAFETY DISTANCES

HEATER	SIDE (MM)	FRONT (MM)	BACK (MM)	OVER (MM)	UNDER (MM)
<b>MAGMA 181</b>	140	160	160	1400	-
<b>MAGMA 210</b>	140	160	160	1400	-
<b>MAGMA 260</b>	140	160	160	1500	-



# SKLE

## TECHNICAL SPECIFICATIONS

HEATER	HEATING POWER (kW)	SAUNA SIZE (m <sup>3</sup> )	STONE VOLUME (kg)	Dim. (WxHxD) (MM)	CONTROL UNIT OPTIONS	MOUNTING
<b>SKLE 90</b>	9.0	8 – 13	60	540 x 725 x 500	3*	Floor
<b>SKLE 105</b>	10.5	9 – 15	60	540 x 725 x 500	3*	Floor
<b>SKLE 120</b>	12.0	10 – 18	60	540 x 725 x 500	3*	Floor
<b>SKLE 150</b>	15.0	14 – 24	60	540 x 725 x 500	3*	Floor

\*Controls: OK 33 PS-3 or OK 33 PUi. Week timer EK 5 P can be used with OK 33 PUi. T2 with contactor box WE 14.

## SAFETY DISTANCES

HEATER	SIDE (MM)	FRONT (MM)	BACK (MM)	OVER (MM)	UNDER (MM)
<b>SKLE 90</b>	80	80	110	1200	-
<b>SKLE 105</b>	80	80	120	1200	-
<b>SKLE 120</b>	120	120	120	1400	-
<b>SKLE 150</b>	120	120	120	1400	-



# SKLA

## TECHNICAL SPECIFICATIONS

HEATER	HEATING POWER (kW)	SAUNA SIZE (m <sup>3</sup> )	STONE VOLUME (kg)	Dim. (WxHxD) (MM)	CONTROL UNIT OPTIONS	MOUNTING
<b>SKLA 181</b>	18.0	18 – 30	120	895 x 700 x 520	3*	Floor
<b>SKLA 210</b>	21.0	24 – 26	120	895 x 700 x 520	3*	Floor
<b>SKLA 260</b>	26.0	30 – 46	120	895 x 700 x 520	1*	Floor
<b>SKLA 262</b>	26.0	30 – 46	120	895 x 700 x 520	2*	Floor

\*Controls: OT 22 PS-3 or OT 22 PUi with contactor box WE 1. Week timer EK 5 P can be used with OT 22 PUi. T2 with contactor box WE 14.

## SAFETY DISTANCES

HEATER	SIDE (MM)	FRONT (MM)	BACK (MM)	OVER (MM)	UNDER (MM)
<b>SKLA 181</b>	140	160	160	1400	-
<b>SKLA 210</b>	140	160	160	1400	-
<b>SKLA 260/262</b>	140	160	160	1500	-



# Octa

## TECHNICAL SPECIFICATIONS

HEATER	HEATING POWER (kW)	SAUNA SIZE (m <sup>3</sup> )	STONE VOLUME (kg)	Dim. (WxHxD) (MM)	CONTROL UNIT OPTIONS	MOUNTING
<b>Octa 901</b>	9	8 - 13	60	550 x 700 x 550	2*	Floor
<b>Octa 1051</b>	10.5	9 - 15	60	550 x 700 x 550	2*	Floor
<b>Octa 1201</b>	12.0	10 - 18	60	550 x 700 x 550	2*	Floor
<b>Octa 1501</b>	15.0	14 - 24	60	550 x 700 x 550	2*	Floor

\*Controls: Digi I or Digi II with contactor box WE 4.

## SAFETY DISTANCES

HEATER	SIDE (MM)	FRONT (MM)	BACK (MM)	OVER (MM)	UNDER (MM)
<b>Octa 901</b>	25	25	35	1150	-
<b>Octa 1051</b>	25	25	35	1150	-
<b>Octa 1201</b>	65	65	75	1350	-
<b>Octa 1501</b>	65	65	75	1350	-



# Seidankivi

## TECHNICAL SPECIFICATIONS

HEATER	HEATING POWER (kW)	SAUNA SIZE (m <sup>3</sup> )	STONE VOLUME (kg)	Dim. (WxHxD) (MM)	CONTROL UNIT OPTIONS	MOUNTING
<b>SEITA 902</b>	9.0	8 - 13	80	610 x 810 x 610	2*	Floor
<b>SEITA 1052</b>	10.5	9 - 15	80	610 x 810 x 610	2*	Floor
<b>SEITA 1202</b>	12.0	10 - 18	80	610 x 810x610	2*	Floor
<b>SEITA 1502</b>	15.0	14 - 24	80	610 x 810 x 610	2*	Floor

\*Controls: Digi I or Digi II with contactor box WE 4.

## SAFETY DISTANCES

HEATER	SIDE (MM)	FRONT (MM)	BACK (MM)	OVER (MM)	UNDER (MM)
<b>SEITA 902</b>	40	40	40	40	40
<b>SEITA 1052</b>	40	40	40	40	40
<b>SEITA 1202</b>	40	40	40	40	40
<b>SEITA 1502</b>	40	40	40	40	40





## K-line & KL-line

### TECHNICAL SPECIFICATIONS

HEATER	HEATING POWER (kW)	SAUNA SIZE (m <sup>3</sup> )	STONE VOLUME (kg)	Dim. (WxHxD) (MM)	CONTROL UNIT OPTIONS	MOUNTING
12 K	12.0	5 - 13	30	400 x 680 x 430	-	Floor
12 KL	12.0	5 - 13	30	400 x 680 x 430	-	Floor
16K	16.0	6 - 16	35	410 x 730 x 480	-	Floor
16 KL	16.0	6 - 16	35	410 x 730 x 480	-	Floor
20 K	20.0	8 - 22	40	410 x 730 x 520	-	Floor
20 KL	20.0	8 - 22	40	410 x 730 x 520	-	Floor

### SAFETY DISTANCES

HEATER	SIDE (MM)	FRONT (MM)	BACK (MM)	OVER (MM)	UNDER (MM)
12 K	500	1000	500	1200	-
12 KL	500	1000	500	1200	-
16 K	500	1000	500	1200	-
16 KL	500	1000	500	1200	-
20 K	500	1000	500	1200	-
20 KL	500	1000	500	1200	-



## Rocher Wood

### TECHNICAL SPECIFICATIONS

HEATER	HEATING POWER (kW)	SAUNA SIZE (m <sup>3</sup> )	STONE VOLUME (kg)	Dim. (WxHxD) (MM)	CONTROL UNIT OPTIONS	MOUNTING
Rocher Wood	18.0	8 - 18	140	540 x 1230 x 540	-	Floor
Rocher Wood SL	18.0	8 - 18	140	540 x 1230 x 540	-	Floor

### SAFETY DISTANCES

HEATER	SIDE (MM)	FRONT (MM)	BACK (MM)	OVER (MM)	UNDER (MM)
Rocher Wood	250	250	250	800	-
Rocher Wood SL	250	250	250	800	-



# SIL-line

## TECHNICAL SPECIFICATIONS

HEATER	HEATING POWER (kW)	SAUNA SIZE (m <sup>3</sup> )	STONE VOLUME (kg)	Dim. (WxHxD) (MM)	CONTROL UNIT OPTIONS	MOUNTING
20 SIL	18.0	8 - 22	40	410 x 730 x 520	-	Floor
28 SIL	24.0	12 - 28	55	480 x 930 x 520	-	Floor
38 SIL	30.0	18 - 38	70	520 x 930 x 570	-	Floor

## SAFETY DISTANCES

HEATER	SIDE (MM)	FRONT (MM)	BACK (MM)	OVER (MM)	UNDER (MM)
20 SIL	500	1000	-	1200	-
28 SIL	500	1000	-	1200	-
38 SIL	500	1000	-	1200	-



# Ukkotonttu

## TECHNICAL SPECIFICATIONS

HEATER	HEATING POWER (kW)	SAUNA SIZE (m <sup>3</sup> )	STONE VOLUME (kg)	Dim. (WxHxD) (MM)	CONTROL UNIT OPTIONS	MOUNTING
Ukkotonttu	18.0	8 - 22	100	600 x 1350 x 520	-	Floor

## SAFETY DISTANCES

HEATER	SIDE (MM)	FRONT (MM)	BACK (MM)	OVER (MM)	UNDER (MM)
Ukkotonttu	500	1000	-	1200	-



# Hiidenkivi

## TECHNICAL SPECIFICATIONS

HEATER	HEATING POWER (kW)	SAUNA SIZE (m <sup>3</sup> )	STONE VOLUME (kg)	Dim. (WxHxD) (MM)	CONTROL UNIT OPTIONS	MOUNTING
Hiidenkivi	18.0	8 - 18	50	500 x 800 x 490	-	Floor

## SAFETY DISTANCES

HEATER	SIDE (MM)	FRONT (MM)	BACK (MM)	OVER (MM)	UNDER (MM)
Hiidenkivi	300	1000	-	1200	-



Helo reserves the right to change specifications and design without a notice.

Produced by Markenvard Media  
Printed by PA Group

© 2012 Helo Oy

**helo**  
GENUINE SAUNA & STEAM