



Jaymart

Symphony Loose lay and Inlaid logo/ design mat

Product Information

Advanced dyeing technology provides a unique method of dyeing the high twist nylon tufts to ensure a deep and intense colour penetration. Colour is locked in for greater colour retention and longer life. There is a standard colour palette of 150 colours for regular logo designs or a more extensive colour bank of over 700 colours for detailed designs or reproduction of photographic images. Extremely hard wearing and absorbent, ideal for the most complex of designs.

Symphony Logo & Design Mats

Advanced dyeing technology provides a unique method of dyeing the high twist nylon tufts to ensure a deep and intense colour penetration. Colour is locked in for greater colour retention and longer life. There is a standard colour palette of 150 colours for regular logo designs or a more extensive colour bank of over 700 colours for detailed designs or reproduction of photographic images. Extremely hard wearing and absorbent, ideal for the most complex of designs.

Using advanced dyeing technology provides a unique method of dyeing the high twist nylon tufts to ensure a deep and intense colour penetration. with photo realistic images and logos. The High Definition system allow 76 dots per inch allowing a greater clarity of design, finer text definition, shadowing, shading and 3d Effects.

Colour is locked in for greater colour retention and longer life. There is a standard colour palette of 150 colours for regular logo designs or a more extensive colour bank of over 700 colours for detailed designs or reproduction of photographic images.

Looselay Format Mats

All mats are nitrile rubber backed, with anti-trip edges to all 4 sides. The rubber backing can be supplied in either smooth or gripper backed. Smooth backing is supplied as standard. The edges are strengthened for increased resistance to tearing and for better durability. The heavyweight primary backing gives better floor stability and resistance to rippling.

Mats have excellent colour fastness and can be machine washed at 40°C.

Symphony mats are available in 12 standard mat sizes and can also be custom manufactured in any size up to 6.00m x 2.00m or 8.00m x 1.50m

MAT SIZES:

85cm x 60cm

120cm x 85cm

150cm x 85cm

300cm x 85cm

300cm x 115cm

300cm x 150cm

300cm x 200cm

180cm x 115cm

200cm x 115cm

200cm x 200cm

240cm x 115cm

250cm x 150cm

Also Available in Circular, Semi-circular, Oval and Semi - Oval mats in a selection of sizes. Please ask for more details.

Edged on all 4 sides. Sizes include edging.

Recessed Mats

**11mm
Gauge**

Edged Mats

**8mm
Gauge**

Recessed Matwell Format

Symphony mats can also be supplied with an extra thick 3mm rubber backing for matwell use. These mats would not have anti-trip edges and the maximum matwell size is 5.9m x 1.85cm



Examples





HD221



HD216



HD211



HD206



HD201



HD222



HD217



HD212



HD207



HD202



HD223



HD218



HD213



HD208



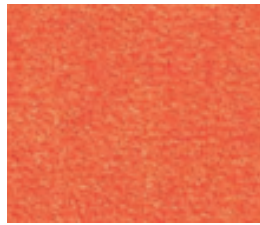
HD203



HD224



HD219



HD214



HD209



HD204



HD225



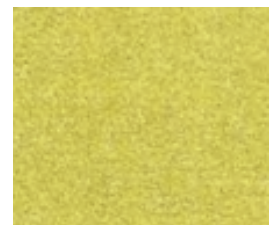
HD220



HD215



HD210



HD205

HD 201 - 225

Colours are approximations only - please request samples for confirmation



HD226



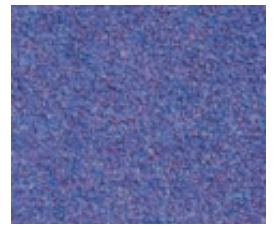
HD231



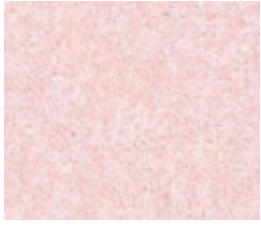
HD236



HD241



HD246



HD227



HD232



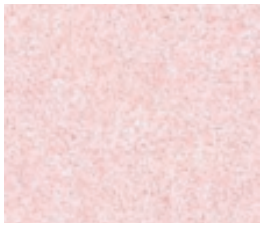
HD237



HD242



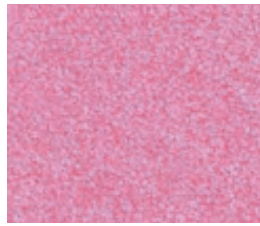
HD247



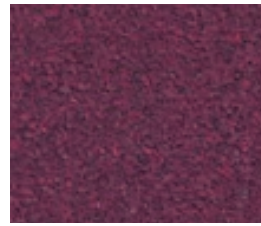
HD228



HD233



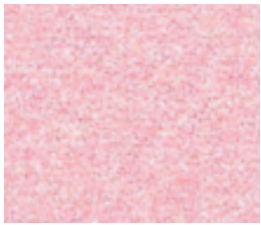
HD238



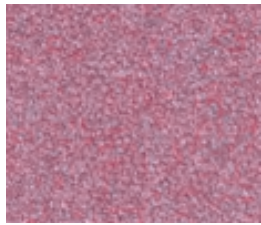
HD243



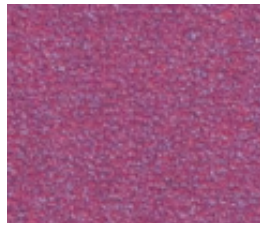
HD248



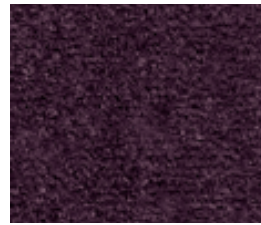
HD229



HD234



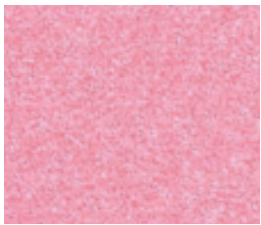
HD239



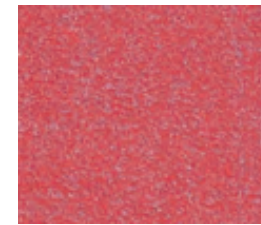
HD244



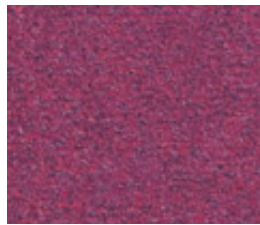
HD249



HD230



HD235



HD240



HD245



HD250

HD 226 - 250

Colours are approximations only - please request samples for confirmation



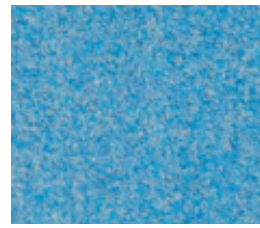
HD251



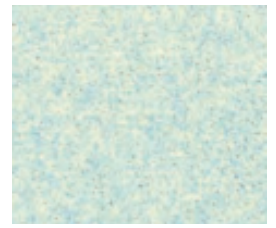
HD256



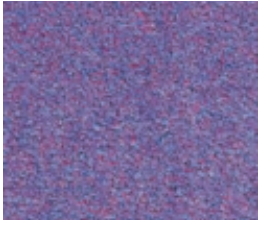
HD261



HD266



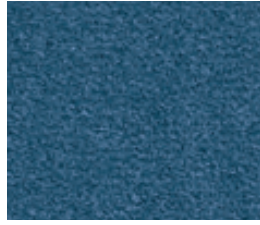
HD271



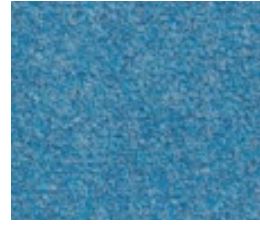
HD252



HD257



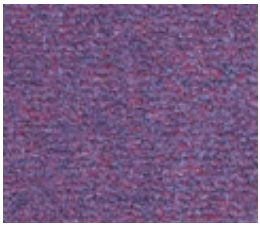
HD262



HD267



HD272



HD253



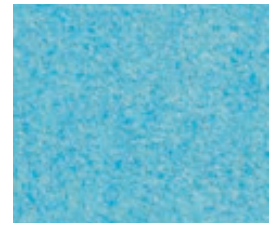
HD258



HD263



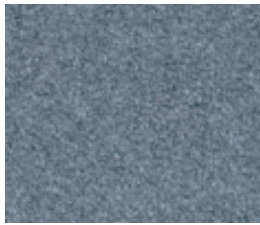
HD270



HD273



HD254



HD259



HD264



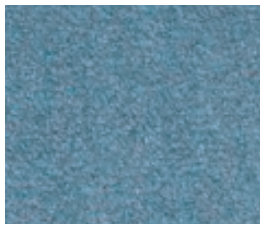
HD268



HD274



HD255



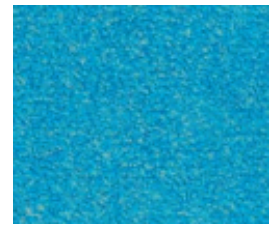
HD260



HD265



HD269



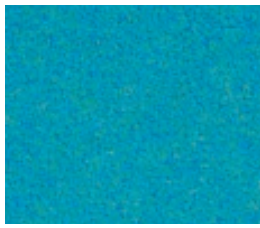
HD275

HD 251 - 275

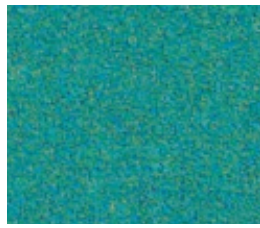
Colours are approximations only - please request samples for confirmation



HD276



HD281



HD286



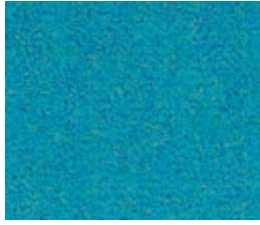
HD291



HD296



HD277



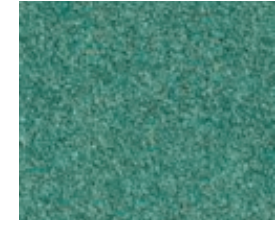
HD282



HD287



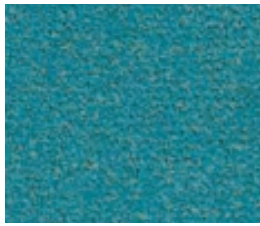
HD292



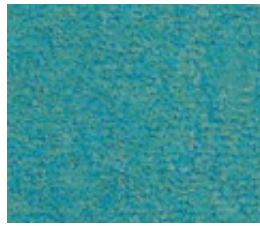
HD297



HD278



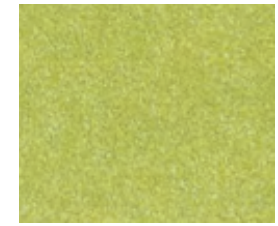
HD283



HD288



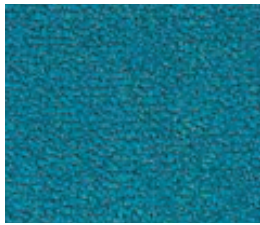
HD293



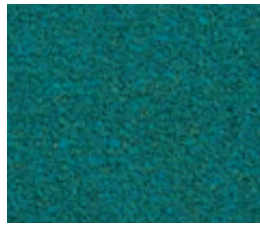
HD298



HD279



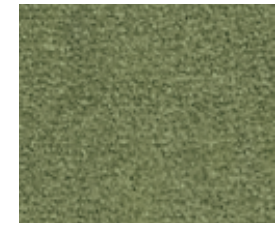
HD284



HD289



HD294



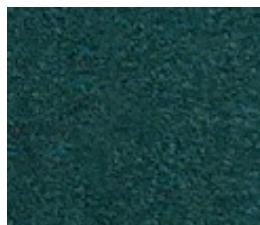
HD299



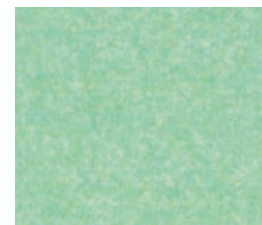
HD280



HD285



HD290



HD295



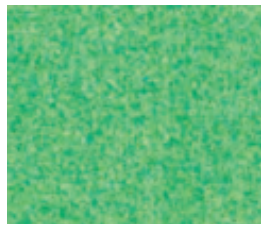
HD300

HD 276 - 300

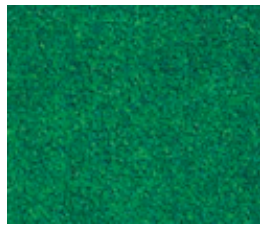
Colours are approximations only - please request samples for confirmation



HD301



HD306



HD311



HD316



HD321



HD302



HD307



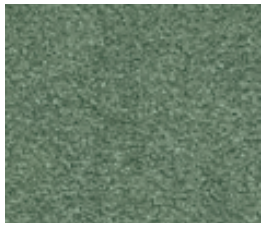
HD312



HD317



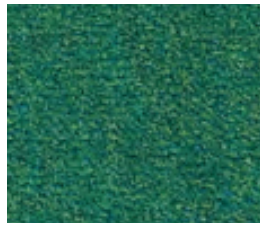
HD322



HD303



HD308



HD313



HD318



HD323



HD304



HD309



HD314



HD319



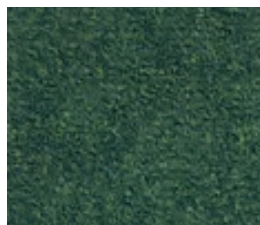
HD324



HD305



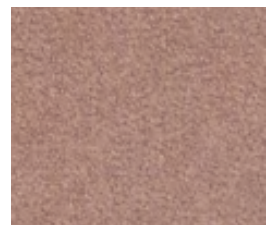
HD310



HD315



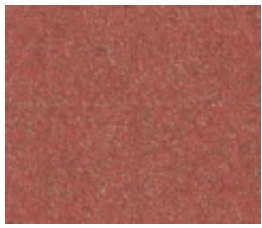
HD320



HD325

HD 301 - 325

Colours are approximations only - please request samples for confirmation



HD326



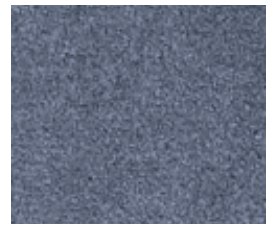
HD331



HD336



HD341



HD346



HD327



HD332



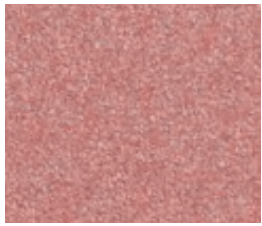
HD337



HD342



HD347



HD328



HD333



HD338



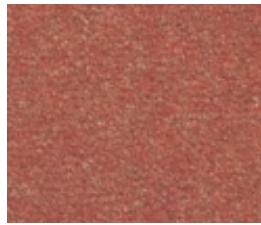
HD343



HD348



HD329



HD334



HD314



HD344



HD349



HD330



HD335



HD340



HD345



HD350

HD 326 - 350

Colours are approximations only - please request samples for confirmation

Symphony Technical Specifications

Product Construction

HD Printed Tufted Cut Pile 100% Heat Set Nylon 6.6 for improved wear and appearance with 100% Nitrile Rubber Backing

Fabric Weight (ca)

975 gms/ m²

Total Weight (ca)

2560 gms/ m²

Pile Height

Looselay Mats

8mm

Border Thickness 2.1mm (looselay mats only)

Recessed Mats

11mm (8mm plus 3mm Rubber backing)

Grime Design Aluminium mat System

14mm

Fire Classification

Ca - S1 (Test EN ISO 13501)

Electrical Behavior

Antistatic (Test EN ISO 14041)

Energy Backing

Allows optimum reduction of water during extraction process (reduces drying time)

All Specifications are according to ISO 9001 Quality Certification and ISO 14001 Environmental certification and are subject to



Our 4 step process to a cleaner environment

Step 1

The best way to keep your premises clean is to stop dirt from even getting through the front door. Effective exterior matting scrapes clean and wipes dry, leaving the worst dirt and grit outside, and allowing subsequent interior matting to clean even better.

Step 2

Working in a similar way to exterior matting, this is similarly tough and durable matting that carries on the work to remove the last of the most damaging soil and grit, and continue the drying process.

Step 3

With the worst of the damp and debris now dealt with, secondary internal matting is a high-specification, high-performance product that finishes the dusting and drying.

Step 4

The foyer is one of the highest traffic areas in your building so, however effective your entrance matting, easy to clean, highly durable and attractive carpet that always looks its best will help you make a great first impression – every time.

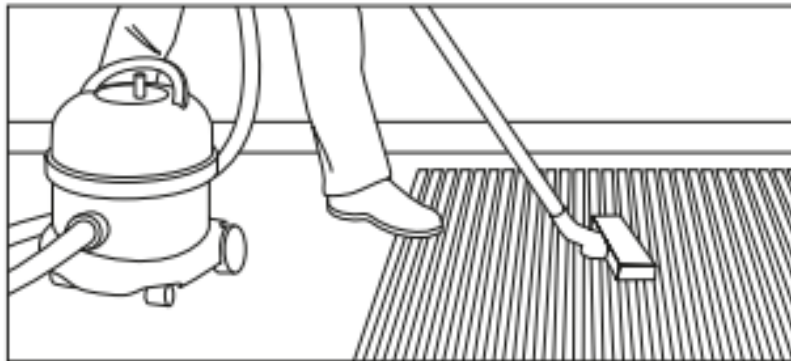
Symphony Installation, Cleaning & Maintenance

Installation (Inlaid Matwell Option)

Ideally fully adhered to dry, smooth sub-floors with approved adhesive but can be loose laid if necessary in matwells or as protective runners. Easily cut to size without fraying.

Maintenance

We recommend daily vacuuming with suction attachment for best appearance retention and longer working life.



For periodic maintenance the best results can be achieved by the periodic use of a spray or dry extraction carpet cleaning machine, or where possible by the removal of the matting for pressure washing or steam cleaning.

The use of a mild detergent (neutral pH) cleaning solution in the carpet cleaning machine should loosen ingrained soiling and aid the removal of oils and grease.



More stubborn stains should be treated with a solvent based spot remover prior to re-cleaning with the detergent solution.

Chewing gum can be removed by freeze spraying or with a proprietary chewing gum remover and then scraped or combed out of the matting carpet pile. This should be done before the full cleaning process is started.

Environmental Impact/ Responsibility

Our Products Use 100% recycled Aluminium and can be recycled after use making our aluminium mat products very environmentally friendly. This combined with the ability to replace the insert material rather than replacing the whole mat, means that although not directly eligible for BREEAM Credits selecting Jaymart will help in supporting your BREEAM certification.

We Manufacture in the United Kingdom to precise specifications/ measurements. This means Jaymart can reduce waste and transport.

Our products are extremely Hardwearing and will reduce the need for frequent replacement to support BREEAM MAT 05 criteria and also minimise the use of harmful cleaning chemicals and cleaning/ maintenance costs for the end user.

BREEAM MAT 01 addresses the environmental impact through the lifecycle of the product. The Jaymart aluminium entrance matting system have the ability to refurbish rather than replace means that our products can further support your aims. It will also help with meeting BREEAM MAT 06 requirements. We can also offer products made from natural inserts from sustainable sources to further meet environmental aims. The expected useful lifespan when refurbished is 30 years approximately dependent on wear and correct maintenance being carried out.



Proudly Manufactured in The UK



100% Recycled Aluminium





Jaymart

**Jaymart Rubber & Plastics
Limited**

**Roman Way, Crusader
Park,**

Warminster

BA12 8SP

Tel 01985 218994

Email: sales@jaymart.co.uk

www.jaymart.co.uk