

Maximum reliability. Minimum fuss.



Selector Guide

EUROBOND Europanel

Eurobond

Fastener Systems and Sealing Products

Contents

Products for Specific Applications	3 - 5
Accessories	6
Technical Data	7 - 9
Technical Notes	10

Introduction to Fixfast

Fixfast design, manufacture and supply specialist building fasteners and components for the walls and roofs of industrial, commercial and larger residential buildings. We collaborate with major building envelope system manufacturers, such as Eurobond, to provide them and their clients with engineered fastening and sealing solutions.

This selector guide has been created as an easy to use reference document, identifying the most common fasteners and components for use when installing the Eurobond Europanel system.

Full technical data for these products along with application uses can be found on our website at www.fixfast.com by searching for the product.

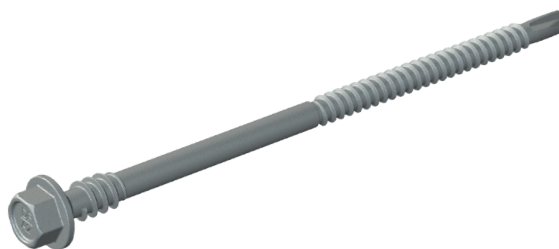
Our specification team can assist in providing NBS specifications for specific projects and our customer services team can answer questions regarding the usage or ordering of Fixfast products.

If you have any queries regarding our products or services then please do contact our customer services team on 0800 304 7616 or by emailing sales@fixfast.com.

Fixing Europanel to steel 1.2 - 3.0mm through spreader washer

Use DrillFast® Stainless DF3-SS-HT fasteners without bonded washer.

8mm hex head, use Fixfast GreenDrive.



Panel Thickness	Fastener Code
75mm	DF3-SS-HT-5.5 x 85
100mm	DF3-SS-HT-5.5 x 110
125mm	DF3-SS-HT-5.5 x 130
150mm	DF3-SS-HT-5.5 x 150
175mm	DF3-SS-HT-5.5 x 180
200mm	DF3-SS-HT-5.5 x 225
240mm	DF3-SS-HT-5.5 x 275
300mm	DF5-SSA4-HT-6.3 x 330*

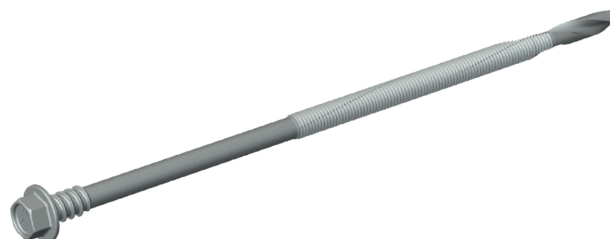
*For fixing to steel 1.2 - 5.0mm thick.

For fixing panels to timber, please contact Fixfast Customer Service team on **0800 304 7616**.

Fixing Europanel to steel 4.0 - 12.0mm through spreader washer

Use DrillFast® Stainless DF12-SS-HT fasteners without bonded washer.

8mm hex head, use Fixfast GreenDrive.



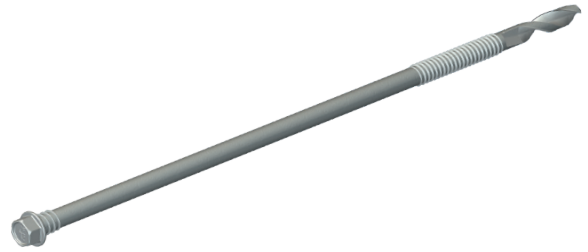
Panel Thickness	Fastener Code
75mm	DF12-SS-HT-5.5 x 115
100mm	DF12-SS-HT-5.5 x 150
125mm	DF12-SS-HT-5.5 x 150
150mm	DF12-SS-HT-5.5 x 200
175mm	DF12-SS-HT-5.5 x 200
200mm	DF12-SS-HT-5.5 x 250
240mm	DF12-SS-HT-5.5 x 300
300mm	DF12-SSA4-HT-6.3 x 355

For fixing through thicker panels, please contact Fixfast Customer Service team on **0800 304 7616**.

Fixing Europanel to steel 8.0 - 25.0mm through spreader washer

Use DrillFast® Stainless DF25-SSA4-HT fasteners without bonded washer.

8mm hex head: use Fixfast GreenDrive.



Panel Thickness	Fastener Code
75mm	N/A
100mm	DF25-SSA4-HT-6.3 x 225
125mm	DF25-SSA4-HT-6.3 x 225
150mm	DF25-SSA4-HT-6.3 x 225
175mm	DF25-SSA4-HT-6.3 x 275
200mm	DF25-SSA4-HT-6.3 x 275
240mm	DF25-SSA4-HT-6.3 x 325

Fixing steel angle to concrete

Use FAZ-A4 stainless steel expanding anchor.

13mm hex nut: use 13mm socket.



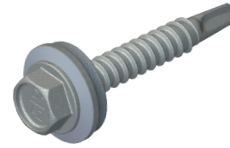
Fastener Code

FAZ - 8/10 - A4

Fixing Omega section to spreader washer 3mm thick

Use DrillFast® Stainless DF3-SS-A15-5.5 x 25.

8mm Hex head, use Fixfast GreenDrive.



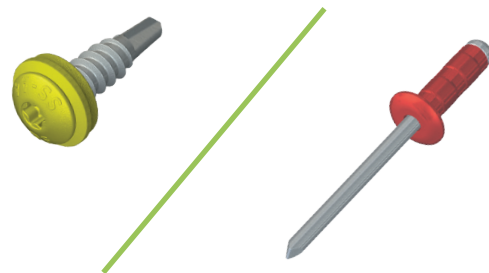
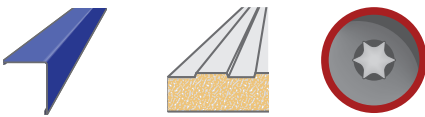
Fastener Code

DF3-SS-A15-5.5 x 25

Fixing flashings and trim to Eurobond panel

Use DrillFast® Lacquered stitching fastener with bonded washer or lacquered stainless steel rivet.

Pan TX25 head, use Fixfast RedDrive. (Drillfast® Lacquered only - use riveting tool for rivet)



Fastener Code

DF2-SSA4-PL-A15-6.3 x 25 + colour

R-SS-LAC-4.8 x 15 + colour

GreenDrive

One-piece drive socket for 8mm hex-head stainless steel fasteners.

Product Code: GREENDRIVE



RedDrive

One-piece drive socket for DrillFast® low profile fasteners, supports the head for easy accurate driving.

Product Code: REDDRIVE



Socket system

Socket for 13mm hex nut, 9.5mm drive

Product Code: 9.5-SOCKET-13

Socket for 13mm hex nut, 12.5mm drive

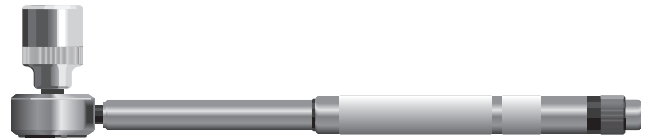
Product Code: 12.5-SOCKET-13

Torque wrench for 9.5mm drive

Product Code: WRENCH-9.5

Torque wrench for 12.5mm drive

Product Code: WRENCH-12.5



Many other tools and accessories are available.

Please see the current Fixfast Product Directory, go to www.fixfast.com, or ask the Fixfast customer service team.

Technical Data

DF3-SS-HT-5.5 Range	
Material	1.4301 stainless steel (304M), with steel case hardened welded point
Coating	Organic
Drilling Capacity	1.2mm - 3.0mm steel
Pull-out Values (axial load resistance)	
Substrate	Characteristic value
1.2mm Steel	1.30kN
2.0mm Steel	2.62kN
3.0mm Steel	4.76kN
Softwood 35mm Embedment	3.57kN

DF5-SSA4-HT		
Material	1.4401 stainless steel (316M), with carbon steel case hardened welded point	
Coating	Organic	
Head Type	Hexagon 8mm	
Drilling Capacity	1.2 - 5.0mm steel	
Installation details		
Substrate	Thickness limits	Minimum penetration
Steel purlins	1.2mm - 5.0mm	19mm through underside
Pull-out Values (axial load resistance)		
Substrate	Characteristic value	Design value
1.2mm Steel	1.44kN	1.08kN
1.5mm Steel	2.13kN	1.60kN
3.0mm Steel	5.92kN	4.45kN
5.0mm Steel	10.98kN	8.25kN

DF12-SS-HT-5.5 Range	
Material	1.4301 Stainless steel (304M), with carbon steel case hardened welded point
Coating	Organic
Drilling Capacity	4.0mm - 12.0mm steel
Pull-out Values (axial load resistance)	
Substrate	Characteristic value
4.0mm Steel	2.80kN
6.0mm Steel	3.09kN
8.0mm Steel	6.89kN
12.0mm steel	6.89kN

Technical Data

DF12-SSA4-HT-6.3 Range	
Material	1.4401 stainless steel (316M), with carbon steel case hardened welded point
Coating	Organic
Head Type	Hexagon 8mm
Drilling Capacity - DF12	4.0 – 12.0mm Steel
Pull-out Values (axial load resistance)	
Substrate	Characteristic Value
4.0mm steel	7.11 kN
6.0mm steel	10.42 kN
8.0mm steel	15.27 kN

DF3-SS-5.5 Range	
Material	1.4301 stainless steel (304M), with steel case hardened welded point
Coating	Organic
Drilling Capacity	1.2mm - 3.0mm steel
Pull-out Values (axial load resistance)	
Substrate	Characteristic value
1.2mm Steel	1.30kN
2.0mm Steel	2.62kN
3.0mm Steel	4.76kN
Softwood 35mm Embedment	3.57kN

DF25-SSA4-HT-6.3 Range	
Material	1.4401 stainless steel (316M) with carbon steel hardened welded point
Coating	Organic
Drilling Capacity	8.0 - 25.0mm steel
Pull-out Values (axial load resistance)	
Substrate	Characteristic value
8.0mm steel	10.82 kN
12.0mm steel	10.82 kN
25.0mm steel	10.82 kN

Technical Data

R-SS-LAC-4.8 x 15

Nominal rivet length (mm)	17.3
Body diameter (mm)	4.8
Drill hole diameter (mm)	4.9
Head diameter (mm)	9.5
Mandrel diameter (mm)	3.2
Grip range (mm)	6.0 - 8.5
Material	A2 304 stainless steel

DF2-SSA4-PL-6.3 x 25

Material	1.4401 stainless steel (316M) with carbon steel hardened welded point
Coating	Organic
Drilling Capacity	2 sheets 1.0mm thickness
Pull-out Values (axial load resistance)	
Substrate	Characteristic value
0.5mm	0.60kN

FAZ - 8/10 A4

Nominal length (mm)	74
Maximum build-up (mm)	10
Drill hole diameter (mm)	8
Drill hole depth (mm)	75
Washer diameter (mm)	16
Performance values	Dependent on substrate and application, please consult Fixfast for details
Material	A4 316 stainless steel
Standard setting torque (Nm)	20

Fastener Data

- + All dimensions are subject to manufacturing tolerances.
- + Performance values are tested and calculated according to Eurocode procedures and appropriate safety factors should be applied in any calculations using these values.

Fastener Selection

- + Recommended fastener lengths are calculated using standard tolerances for the fasteners and the combination of materials in the build-up.
- + If there is distortion in the supporting construction, or other non-standard application detail, longer fasteners may be necessary than those shown. Always check the actual circumstances before deciding on a particular length.

Further Assistance

- + For any enquiry, or to discuss your requirements with someone knowledgeable, call the Fixfast customer service team on **0800 304 7616**.
- + Full literature is available for the Fixfast range, or visit **www.fixfast.com**
- + Other performance data may be available on request. For more unusual applications, tests can be carried out in our in-house technical centre to provide the necessary data.
- + Site visits are also possible, particularly for pull-out performance into concrete, masonry or other variable substrates. Please ask for a Site Visit Request form if you think this service would be useful.
- + CAD files of fasteners are available on request for inclusion in drawings.

The information contained in this document is based on the specification of the Eurobond Europanel system and Fixfast's product data. It is provided in good faith but Fixfast cannot be held liable for any errors. Performance is dependent on adherence to the conditions and instructions contained in Fixfast's Technical Data Sheets for the products shown. Performance values should be approved by a qualified engineer, and Fixfast recommend preliminary tests for any application where variation is possible in the materials or substrates involved.

Lined area for taking notes, consisting of multiple horizontal lines.



Merlin House
Seven Mile Lane
Borough Green
Sevenoaks
Kent
TN15 8QY

Enquiries
0800 304 7616

International
+44 (0) 1732 882387

Fax
0845 450 7486

Email
info@fixfast.com



Certificate number 10905
ISO 9001, ISO 14001
OHSAS 18001