

# Junior SGL



A bright, robust and practical cubicle range with curved doors and dividers for teacher supervision. Junior SGL is available in a variety of panel height options to suit keystage and privacy requirements.

Offering high levels of strength with integral structural headrail and aluminium hardware, Junior SGL is manufactured from Solid Grade Laminate to give ultimate durability.

designers and manufacturers of exemplary washroom systems

call 01603 424855 fax 01603 413336 email [info@dunhamsofnorwich.co.uk](mailto:info@dunhamsofnorwich.co.uk)  
Dunhams Washroom Systems The Granary School Road Neatishead Norwich NR12 8BU

[www.dunhamsofnorwich.co.uk](http://www.dunhamsofnorwich.co.uk)

VAT Registration No. 105 2240 29

Partners BH Dunham MH Dunham JN Dunham SG Dunham TJ Percival

# Specification

## **Pilasters/Divisions/Doors**

Core/Face: Solid grade laminate with colour finish to both sides giving 13mm nominal thickness

Edge: Polished and radiused

Colour: From the Dunhams colour selector

Panel Detail: Curved top door and sweeping cut-out to divisions

## **Hardware**

All fittings manufactured from high quality polished aluminium

Pedestals: Sturdy, solid rolled design with adjustable height to accommodate uneven floors

Hinges: High strength insert with anti-breakout sleeve and self-closing cams

Indicator Bolt: Easy slide action lock with integrated buffer and emergency door release facility

Partition Fixing: Partitions secured with aluminium D brackets and stainless steel bolt-thru fixings

Headrail: D section headrail for maximum strength

Coat Hook: Matching coat hook, 1 per cubicle

## **Dimensions**

Overall Height: 2000mm with cut-outs to door height

Door Height: Curved top, height to suit client's requirements

Widths: from 700mm

Floor Clearance: 150mm

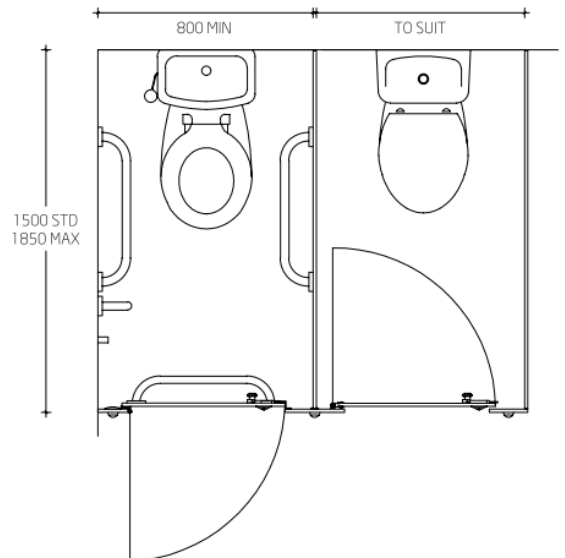
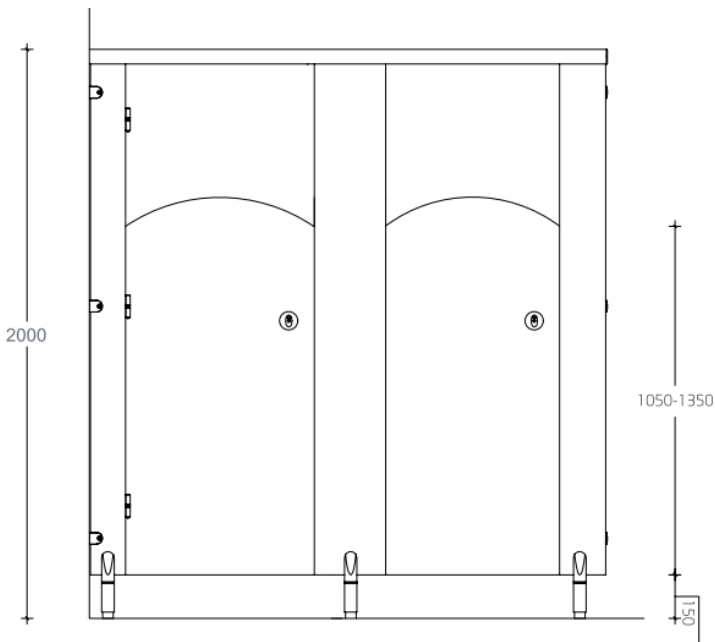
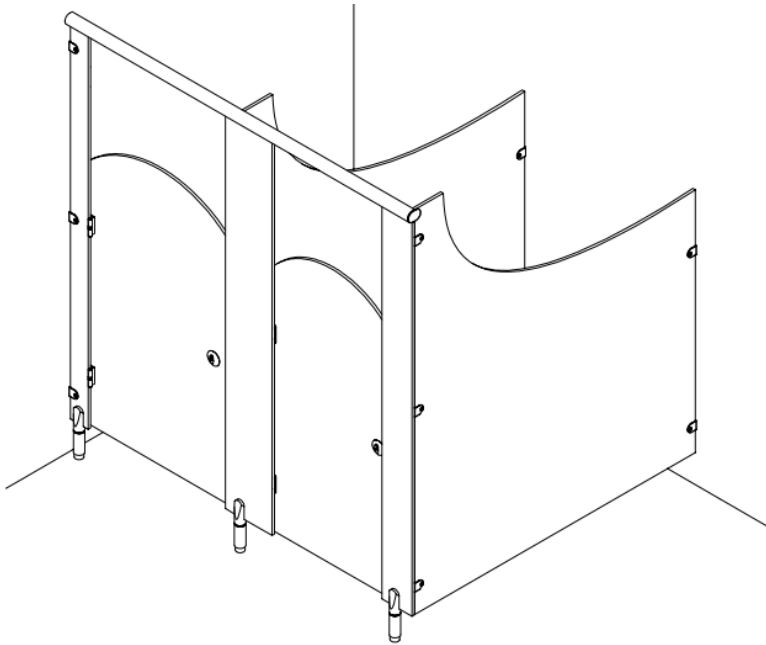
Depth: 1500mm standard (see quote for depth allowed)

Panel Thickness: 13mm

## **Options**

Panel Finishes: Extra cost options include our Grafix range of patterns to cubicle doors. Alternative laminate finishes/patterns to those offered on the Dunhams colour selected can also be sourced to meet your requirements

# Technical Drawings



designers and manufacturers of exemplary washroom systems

call 01603 424855 fax 01603 413336 email [info@dunhamsofnorwich.co.uk](mailto:info@dunhamsofnorwich.co.uk)  
**Dunhams Washroom Systems** The Granary School Road Neatishead Norwich NR12 8BU

[www.dunhamsofnorwich.co.uk](http://www.dunhamsofnorwich.co.uk)

VAT Registration No. 105 2240 29

Partners BH Dunham MH Dunham JN Dunham SG Dunham TJ Percival