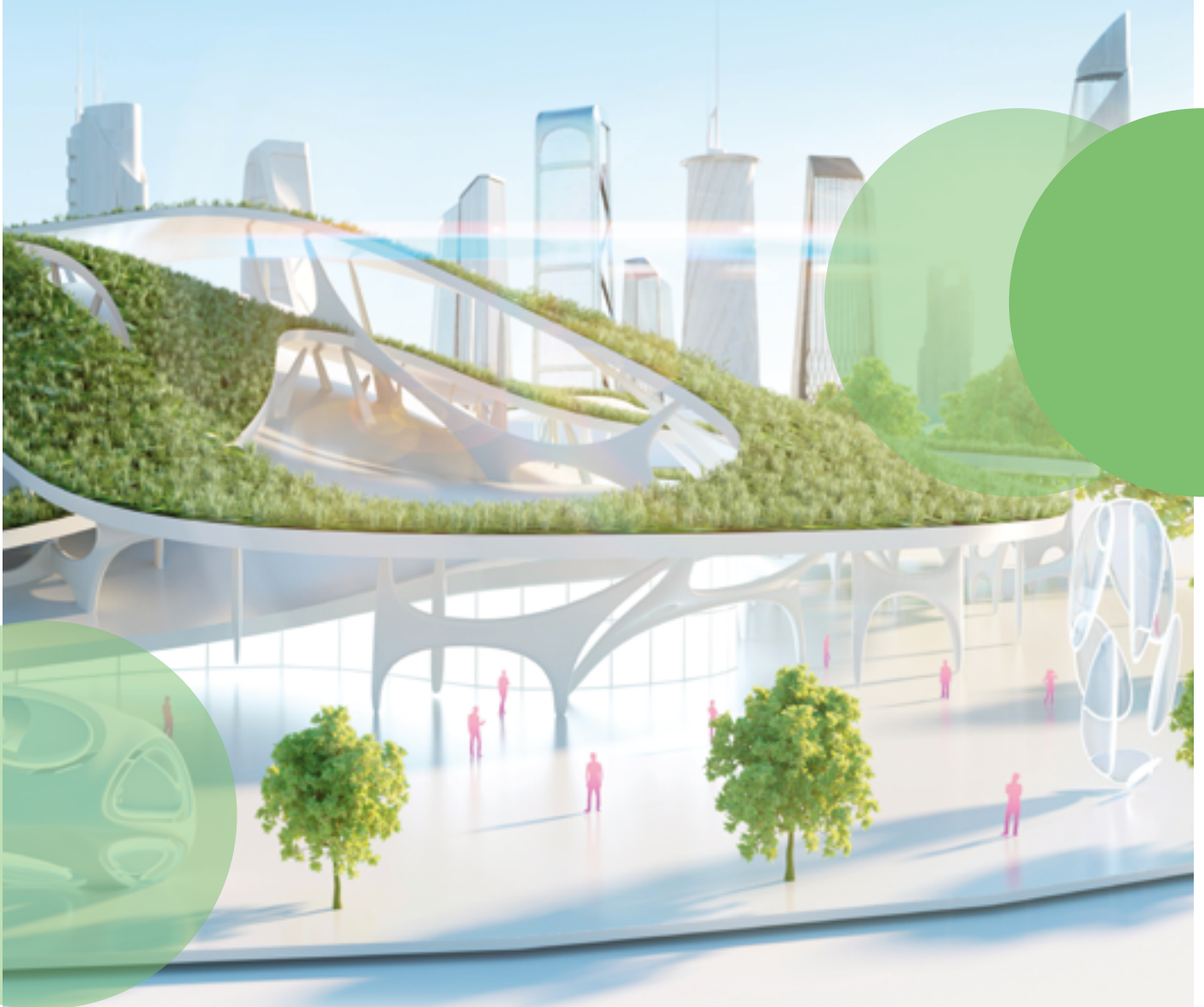


Life Cycle Assessment (LCA)

Sustainability



kuraray

Trosifol® SentryGlas®



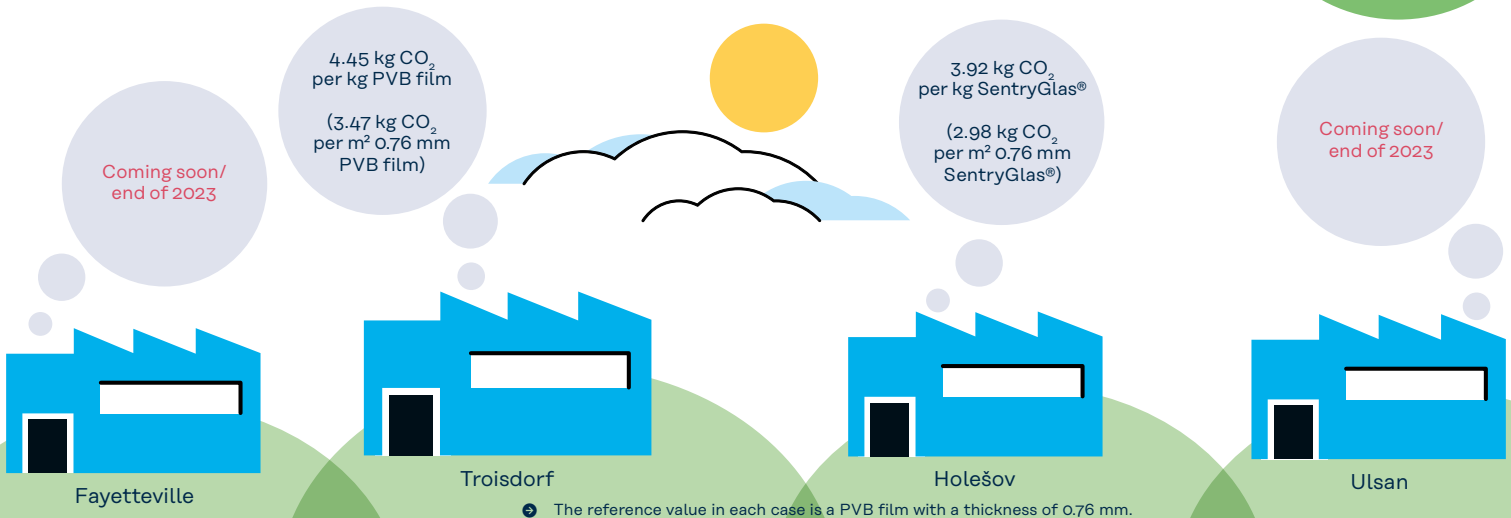
Growth and responsibility towards people and the environment are fundamental principles of all Kuraray employees' actions worldwide. We are committed to the principles of Responsible Care and are aware of our responsibility for future generations. We develop products and technologies that improve the quality of life and help find solutions to current global challenges. This includes ensuring the safety of our employees, avoiding environmentally harmful consequences of industrial production, reducing energy consumption at our sites, and developing new products and technologies that protect the environment.

The basis for this is ongoing monitoring and review of our daily activities. One metric here is the 'Life Cycle Assessment' (LCA), which measures the environmental impact of a product or service.

We have currently determined the data for our two production sites in Troisdorf/Germany and Holešov:

This is how Kuraray makes the world a little bit safer.

Life Cycle Assessment (LCA) (climate change total)



FOR FURTHER INFORMATION

on products from Kuraray, please visit www.kuraray.com.
You can find further information on our Trosifol® and SentryGlas® products at www.trosifol.com.

Kuraray America, Inc.
Advanced Interlayer Solutions Division
Wells Fargo Tower
2200 Concord Pike, Ste. 1101
Wilmington, DE 19803, USA
P +1 800 635 3182

Kuraray Europe GmbH
Advanced Interlayer Solutions Division
Kronenstr. 55
53840 Troisdorf
Germany
P +49 2241 2555 226

Kuraray Co., Ltd
Advanced Interlayer Solutions Division
Tokiwabashi Tower
2-6-4 Otemachi, Chiyoda-ku
Tokyo 100-0004, Japan
P +813 6701 1508

trosifol@kuraray.com

9/2023

Copyright © 2023 Kuraray. All rights reserved.
Trosifol, Butacite, SentryGlas, SG, SentryGlas Xtra, SGX, SentryGlas Acoustic, SGA and Spallshield are trademarks or registered trademarks of Kuraray Co., Ltd. or its affiliates. Trademarks may not be applied for or registered in all countries. The information, recommendations and details given in this document have been compiled with care and to our best knowledge and belief. They do not entail an assurance of properties above and beyond the product specification. Final determination of suitability of any material or process and whether there is any infringement of patents is the sole responsibility of the user.