

SKYLINE®

FASCIA SOFFIT COPINGS

Skyline Overview Brochure



ALUMASC

WATER MANAGEMENT SOLUTIONS





AlumasC is a UK-based supplier of premium building products. The majority of the group's business is in the area of sustainable building products which enable customers to manage energy and water use in the built environment.

All AlumasC businesses have strong UK market positions within their own individual market niches and several are market leaders. AlumasC sustains this strong strategic positioning by offering customers quality products, service and trust. For certain brands, AlumasC is seeking to leverage UK successes in international markets, with particular focus in America, the Middle and Far East, and Europe.

AlumasC fosters an entrepreneurial, achievement orientated culture whereby businesses are encouraged to innovate and respond quickly to local market needs within a cohesive group strategic and management framework. AlumasC businesses also benefit from the group's financial strength.

AlumasC Water Management Solutions (AWMS) is the new name in the industry for proven water management. It's a new joined-up brand that harnesses the expertise of five trusted brands in water management.



Greenfields School // Leighton Buzzard

www.alumascwms.co.uk • info@alumascwms.co.uk • 01536 383 810

The Range

About Skyline

Skyline includes fascia and soffits, copings, cills and surrounds all available in high quality, in-house, BBA certified powder coated aluminium.

The complete range is the ideal solution for use on roofing and gutter interfaces with standard and fully bespoke designs available. Skyline suits both contemporary and traditional architecture and are designed to meet industry standards whilst exceeding expectations in durability, design and performance. Our products have been used in some of the most prestigious construction projects in the UK.

Skyline fascia and soffit components are designed to be used in conjunction with Alumasc's aluminium rainwater systems, in particular the GX range of folded aluminium gutters, providing a complete eaves and roof drainage solution. Alumasc Technical Services can assist in the design of a fixing and support framework to suit individual project requirements. A design and fabrication service is also available for bespoke fascia profiles to suit special project requirements.

Skyline is not a rigid set of standard components, but a product rationale, developed to exploit the potential of Alumasc's wide ranging production capability in pressed and folded aluminium.

Skyline Fascias and Soffits offer top of the range roof edge details to suit all designs and budgets. Skyline systems are manufactured from high quality, polyester coated aluminium and are available in four bold generic shapes with bespoke designs available to order.

Technical Support

Alumasc can offer advice from the first pencil sketches right up to site installation. Our technical support team can advise at the outset what is physically possible with the materials selected and the choices made, in order to optimise designs and avoid unforeseen costs at order and installation stages.

Once the architectural details are agreed, full working drawings are produced with client approval required prior to fabrication. Alumasc will optimise both delivery schedules and installation details to ensure on-site operations are efficient and trouble-free. Simple to follow instructions and layouts are available for every Alumasc scheme making on time project delivery, in the critical closing phases, a reality.

“With Alumasc Skyline the only limitation is imagination: if it can be made, we can make it”



Fascias

Top of the range roof edge details to suit all designs and budgets. Whether you choose from the standard range or bespoke design, the Skyline Fascia system is manufactured from high quality, polyester powder coated aluminium and is available in four bold generic shapes with bespoke designs available to order.



Soffits

The Skyline Soffit Plank is a secret fix modular planking system designed to work on overhanging soffits and canopies or as part of a Skyline fascia scheme.



Copings

The Skyline Coping system provides an economical and easily installed capping to upstand parapets, in conjunction with flat or pitched roofs. The strap fixing method avoids penetration of the capping, whilst allowing ventilation over the top of the wall. Skyline Copings are equally suited to retrofit and new build projects.



Cills & Surrounds

As well as the standard range, Skyline Cills and Surrounds can be made to your exact specification. If you can't find the correct colour from our 26 standard colours, we can provide Cills and Surrounds in any RAL colour, so you can ensure an exact match for your project.



Bullnose

Skyline bullnose profile offers a stylish contemporary fascia profile appearance which can be designed to meet any project requirement.



Anti-climb

Designed with security in mind, preventing unauthorised access to the building roofscape. Skyline anti-climb barriers comprise support brackets and preformed barrier sections. They can be fitted in front of virtually any gutter profile, resulting in a bold architectural feature.



Column Casing

Architecturally striking aluminium column casings, designed to meet any profile and size requirements. Suitable for both external and internal applications, easy to install with minimal visual fixings.

Fascias

Top of the range roof edge details to suit all designs and budgets. Whether you choose from the standard range or bespoke design.

The Skyline Fascia system is manufactured from high quality, polyester powder coated aluminium and is available in four bold generic shapes with bespoke designs available to order.



Guardian // Jersey

Fascias

The exciting Skyline Fascia and Soffit system is based on aluminium fascia profiles in a range of shapes and sizes, engineered to the highest standard on a project by project basis to suit any architectural requirements

The fascia profiles fully enclose the gutter and may be projected direct from the elevation or combined with the soffit plank to give varying eaves overhangs.



Langley Court // Beckenham

www.alumascwms.co.uk • info@alumascwms.co.uk • 01536 383 810

Soffits

Made to suit all designs and budgets, the Skyline Soffit system is manufactured from high quality, polyester powder coated aluminium and is available in a standard range as well as bespoke designs available to order.

The Skyline Soffit plank is a secret fix modular planking system designed to work on overhanging soffits and canopies or as part of a Skyline fascia scheme.



Soffits

Made to suit all designs and budgets, the Skyline Soffit system is manufactured from high quality, polyester powder coated aluminium and is available in a standard range as well as bespoke designs available to order.

The Skyline Soffit plank is a secret fix modular planking system designed to work on overhanging soffits and canopies or as part of a Skyline fascia scheme.



Wimbledon // London

Copings

The Skyline Coping system provides an economical and easily installed capping to upstand parapets, in conjunction with flat or pitched roofs.

The strap fixing method avoids penetration of the capping, whilst allowing ventilation over the top of the wall. Skyline Copings are equally suited to retrofit and new build projects.

Queensland Road // London

Copings



Bromyard Ave // London

www.alumascwms.co.uk • info@alumascwms.co.uk • 01536 383 810

Cills & Window Surrounds

As well as the standard range, Skyline Cills and Surrounds can be made to your exact specification. If you can't find the correct colour from our 26 standard colours, we can provide Cills and Surrounds in any RAL colour, so you can ensure an exact match for your project.

With the longevity you can expect from an Alumasc product, the Cills and Surrounds will provide a perfect finish to the building.

Kingswood // Bristol

Cills & Window Surrounds



Princess Hay
Shopping Centre // Exeter

www.alumascwms.co.uk • info@alumascwms.co.uk • 01536 383 810

Bullnose

Skyline bullnose profile offers a stylish contemporary fascia profile appearance which can be designed to meet any project requirement.

Axis // Reading

Anti-climb

Designed with security in mind, preventing unauthorised access to the building roofscape. Skyline anti-climb barriers comprise support brackets and preformed barrier sections. They can be fitted in front of virtually any gutter profile, resulting in a bold architectural feature.



St Cuthberts // Torquay

www.alumascwms.co.uk • info@alumascwms.co.uk • 01536 383 810

Column Casing

Architecturally striking aluminum column casings, designed to meet any profile and size requirements. Suitable for both external and internal applications, easy to install with minimal visual fixings.



Bealieu Square // Chelmsford

www.alumascwms.co.uk • info@alumascwms.co.uk • 01536 383 810

Specification

Innovative

Aluminium is a young material, but has become the world's second most used metal after steel. It is known as 'the magic metal' because of its unique physical, chemical and mechanical properties which make it ideal for use in rainwater gutter and downpipe systems.

Design Flexibility

Aluminium can be formed in different ways to fulfil different functional purposes and create different visual effects. This allows great scope in the formation of architectural details, with appearance ranging from traditional to crisp and clean modern.

Lightweight

The lightweight characteristics of aluminium fascia and soffit products mean that they are economical and easy to transport. Consequently handling is easier and installation faster, with resultant cost effectiveness.

Life Expectancy

Alumasc aluminium fascia and soffit systems have a life expectancy in excess of 40 years in rural and suburban areas and up to 25 years in industrial and/or marine conditions. This greatly enhances the product's cradle to grave embodied energy figure relative to systems (e.g. plastic) with shorter life spans. This also results in the removal of the appreciable costs, both environmental and monetary, of product replacement.

Ecological Benefits

Alumasc aluminium fascia and soffit goods contain no toxic substances and perform excellently when assessed from cradle to grave for effects on water quality (eutrophication) and water and ground contamination (ecotoxicity).

Low Maintenance

In service, Alumasc aluminium fascia and soffit systems are virtually maintenance-free. Apart from routine cleaning for visual reasons and special consideration for coastal areas, aluminium does not require any maintenance being carried out, providing a cost benefit over its lifetime.

Fire Regulations

Fire rating is one of the most important factors today. Solid aluminium sheet is classified as non combustible. Powder coated aluminium, Interpon D1000 series and D2000 series have been tested to BS476, parts 6 & 7 and have been deemed to have met the criteria for class 0 building regulation approval.

Choice of Finish

Alumasc architectural fabrications offer a huge range of visual choice. The metal's natural protective coating of aluminium oxide gives a soft natural finish. An eye-catching choice of colours is available from Alumasc's BBA certificated Raincote range of powder coatings.

Approvals & Quality Control

Polyester powder coating is in accordance with BS EN 12206-1:2004. This refers to the coating of aluminium and aluminium alloys for architectural purposes. In the case of rainwater systems it is accepted that such coating is both decorative and protective. Alumasc systems will certainly be finished to this standard, and will in most cases exceed it. Along with independent auditing to the ISO 9001:2008 Quality Management and ISO 14001:2004 Environmental Management Standards, Alumasc maintains BBA certification for the powder coating of its aluminium rainwater goods in respect of longevity of performance and colour fastness: **British Board of Agrément Certificate No. 86/1671.**

Alumasc Aluminium Architectural Fabrications are available in plain mill finish for on site painting, or in the Raincote range of BBA approved, factory applied polyester powder coatings.

In-House Powder Coatings

Alumasc's in-house powder coating plant gives both the control and the freedom to produce a range of colour finishes to a level not typically available in the construction industry. Utilising the technologies and procedures adopted for its automotive precision castings division, Alumasc benefits from high specification coating techniques that fulfil the rigors of testing prescribed by some of the worlds leading vehicle producers. Finishes of this quality maintain their appearance even when subject to harsh geographical weather conditions.

The aluminium undergoes a series of pretreatments to provide the ideal prepared surface to receive an electrostatically applied polyester powder in the chosen colour. This is then 'baked' and bonded to the fitting in a carefully controlled oven; the complete process is achieved on a continuous line to obtain the best results. The performance of polyester powder coated rainwater systems greatly exceeds that of site painted systems.

Choice of Colour

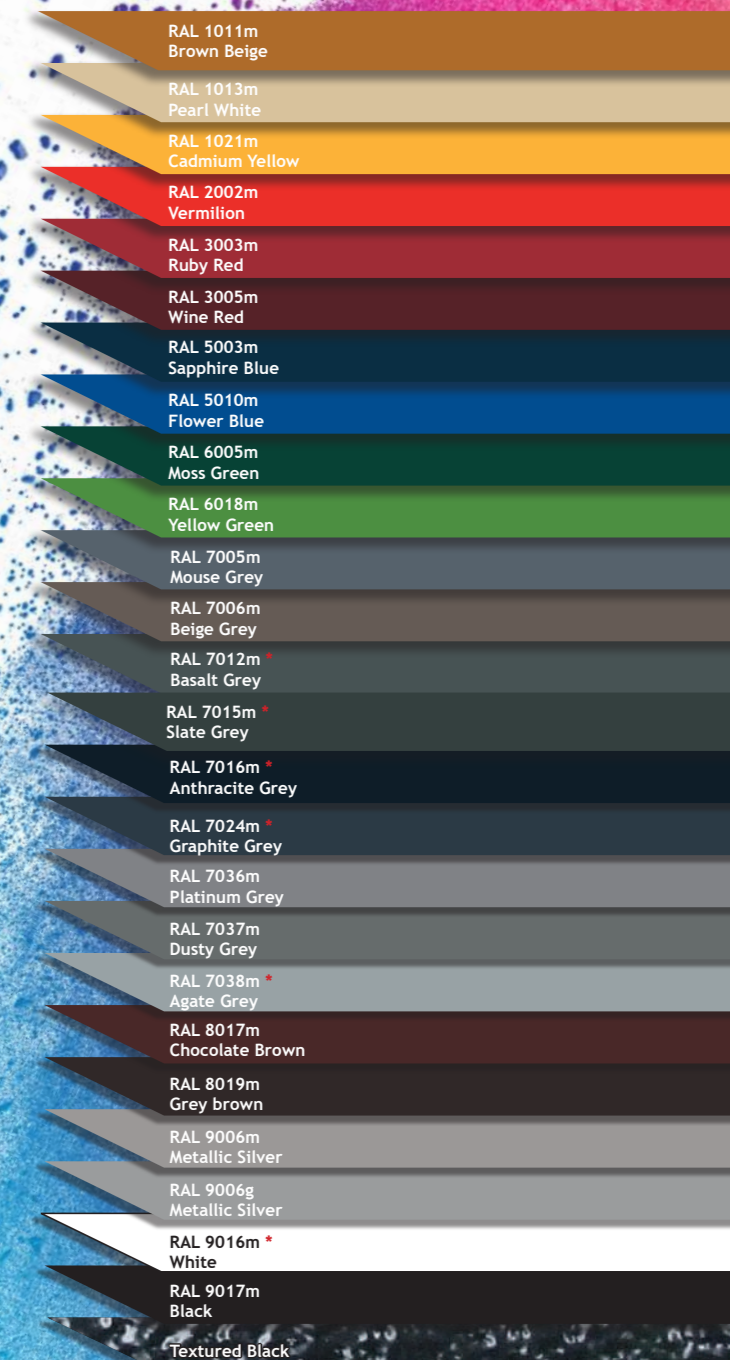
The standard aluminium Raincote range comprises 16 colours with additional colours with a BS or RAL number available to special order, subject to quantity and cost. The colours reproduced on this page are for general guidance only.

Please contact Alumasc Technical Services for further information on colour choice and samples.

Any colour

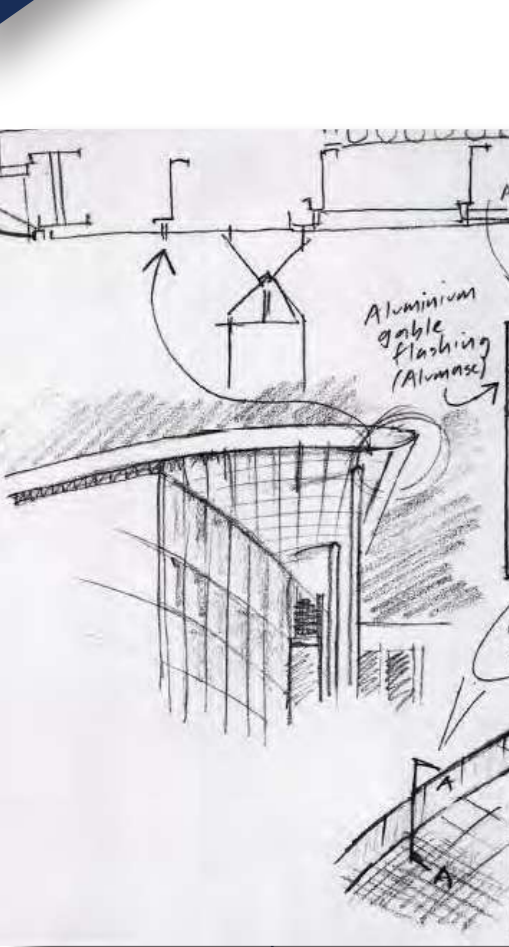
We can also apply a colour of your choice

*

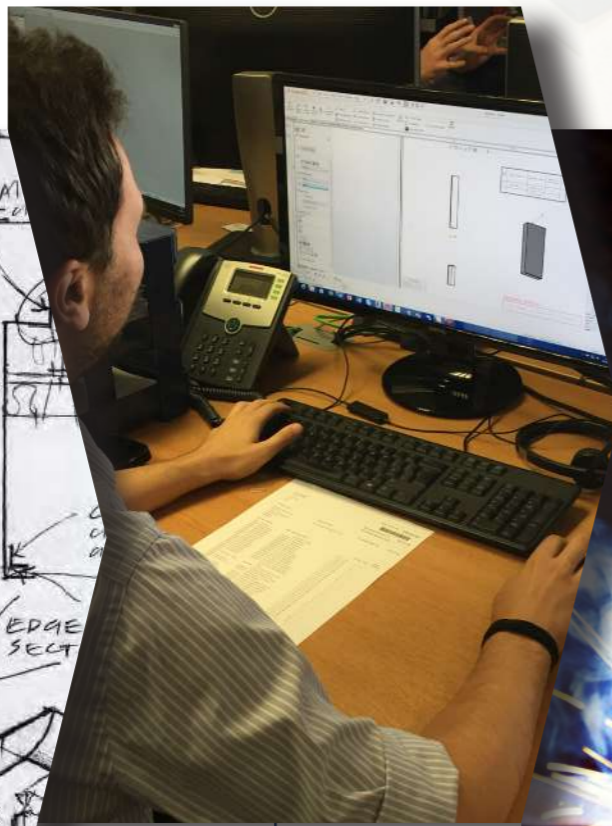


Design & Manufacture Journey

“With Alumasc Skyline the only limitation is imagination, if it can be made, we can make it”



Concept design, sketch, detail & technical information, aesthetics and budget.



preparation CAD work for sign off, estimating and order processing.



Manufacture of intricate details and welding



Folding lengths on CNC machinery to profile shapes.



Finishing and pre-treatment, automated production line powder coating to BBA accreditation.



product completion, packaged ready to deliver to site, nationally.



Technical Support
+44 (0) 1304 203 545

technical@alumascwms.co.uk

Customer Services
+44 (0) 1304 203 545

customerservices@alumascwms.co.uk



www.alumascskyline.co.uk



www.alumascrainwater.co.uk



www.harmerdrainage.co.uk



www.wadedrainage.co.uk



www.gatic.co.uk

Alumasc Water Management Solutions
Station Road
Burton Latimer
Kettering
Northamptonshire
NN15 5JP

01536 383 810
info@alumascwms.co.uk

www.alumascwms.co.uk [@alumascwms](https://twitter.com/alumascwms)

