



## **StoDeco Facade Profiles**

Insulated facades featuring  
three-dimensional decorative  
designs

Please note that the details, illustrations, general technical information, and drawings contained in this brochure are only general proposals and details which merely describe the basic functions schematically. They are not dimensionally accurate. The applicator/customer is solely responsible for determining the suitability and completeness of the products used for the respective construction project. Neighbouring works are described only schematically. All specifications and information must be adjusted or agreed in the light of local conditions and do not constitute work, detail or installation plans. The technical specifications and product information included in the Technical Data Sheets and system descriptions/approvals must be observed.

# Based on a natural raw material

External wall insulation systems are applied to approximately 170 million m<sup>2</sup> of facade surface throughout Europe each year. They not only contribute significantly to the building's energy efficiency, but also offer numerous options for decorating the facade surface.

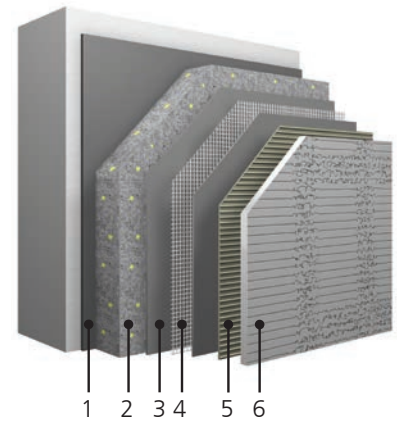
The three-dimensional facade elements and profiles showcased in this brochure are just one way of customising your EWI facade.

Perlite forms through hydration of obsidian (a volcanic glass).

Through application of high temperatures, the naturally occurring Perlite expands to form a lightweight granular material, which is processed further using pressure and heat to produce the Verolith panels.

The desired non-structural, three-dimensional facade elements can then be cut to the customers' design, using state-of-the-art CNC milling machines.

## System build-up



- |              |   |
|--------------|---|
| 1 Adhesive   | 4 Reinforcement                         |
| 2 Insulation | 5 Adhesive                              |
| 3 Base coat  | 6 3D facade element<br>(coated 3 times) |



# Uniquely Individual Design Scope

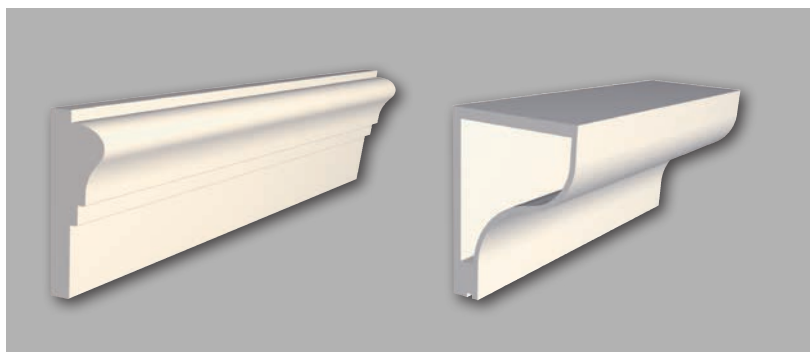
Verolith panels are available as standard in formats with lengths up to 240 cm, widths up to 120 cm, and thicknesses up to 10 cm. Other formats are also available on request.

We then turn these panels into sculptural shapes, ledges, cornices, company logos, lettering or individual profiles to your own individual design. From the strikingly ornate to the plain and functional, StoDeco facade elements meet all the needs of every type of reproduction and new design. The profiles displayed on these pages will provide you with a starting point for your own designs.

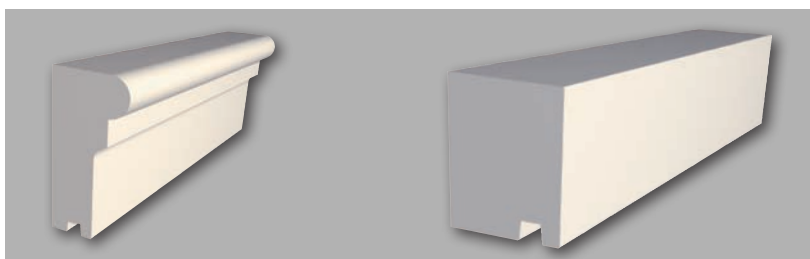
## Quality Product

- High resistance to breaking
- Lightweight and easy to handle
- Solid and homogeneous, resulting in a surface that is resistant to compressive stress
- Resistant to adverse environmental conditions
- Very quick to fix into place
- Impact-resistant and robust
- Lasting attractive appearance
- Desirable proposition for protected historical buildings
- Compatible with Sto coating systems

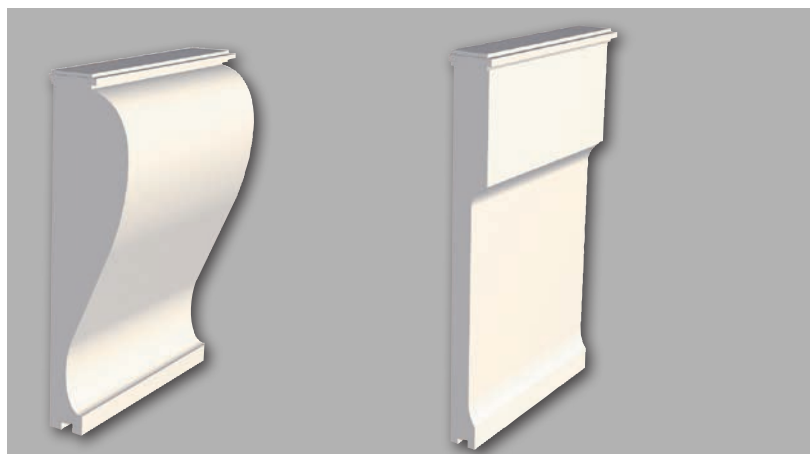
Modern, classical, Art Deco or Bauhaus inspired: StoDeco facade elements offer the specifier unlimited scope for facades with a definitive individual touch.



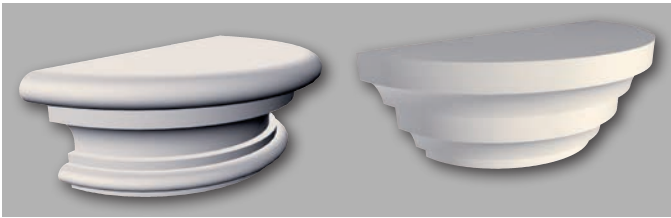
Frame profiles and large format hollow profiles



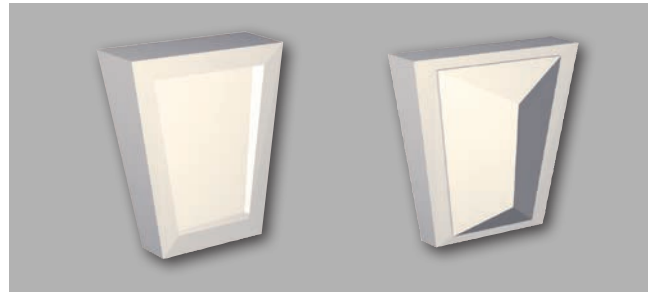
Window sills



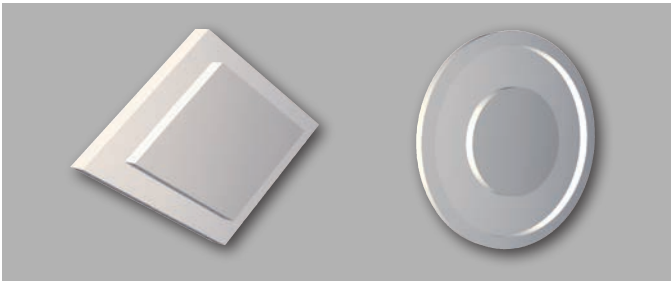
Sill supports



Half-plinths



Keystones



Ornaments



Sculptural shapes and ledges



Circular and gothic ogive arches consisting of frame profiles



Panel designs for facade surfaces



# Shaping

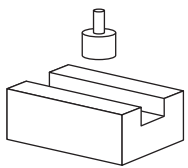
The almost limitless possibilities enabled by the Verolith material allow for truly visionary facades.

A 5-axis CNC milling machine removes material from the panels in sculptured reliefs. Mitre cuts can be produced for perfect fits without breaking the sometimes delicate contours to present a seamless appearance.

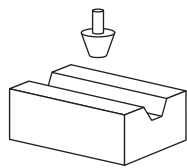
Decorative panels can be supplied with edge designs ranging from straight, angular, trapezoidal and concave through to convex. Geometric forms can be cut from panels of varying thickness as decorative elements. These elements may cover large areas or be used as individual profiles or ornaments to add a specific or personal character to the building.

Most of the StoDeco elements and profiles are suitable for drilling and dowelling and can be applied to external wall insulation systems or solid backgrounds.

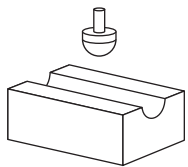
Milling geometries for machining the Verolith material:



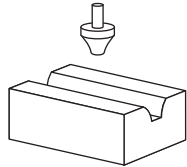
Square milling cutter



Double equal-angle milling cutter

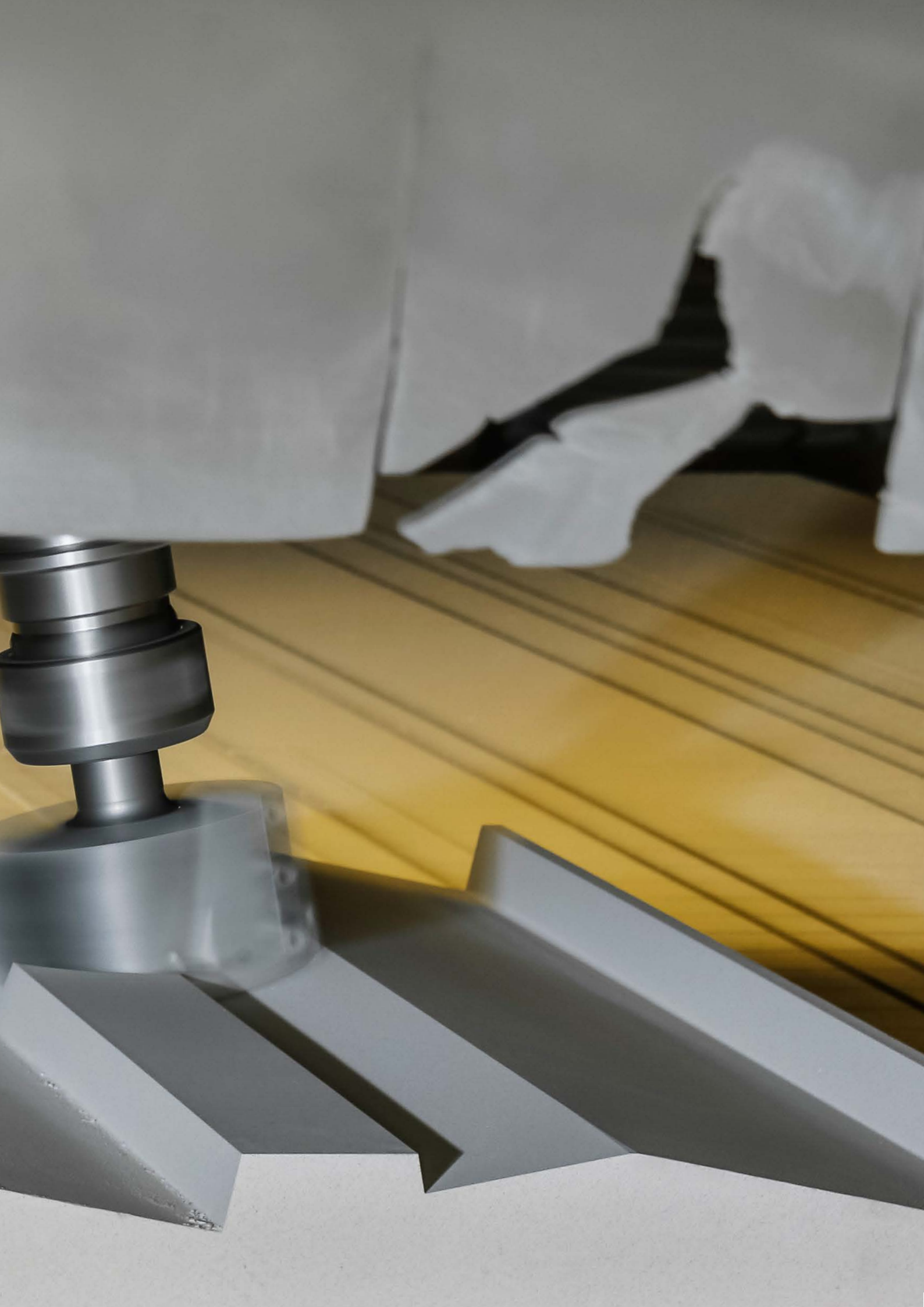


Ball milling cutter



Corner rounding milling cutter





## Facades with profile

Created using sculptural shapes and detailing

Emphasise, contrast, transfer, convey, relate – a facade can do all this, and also reveal its poetic side. The art lies in the combination of function and decoration.

Frames and custom-made individual elements offer a contemporary interpretation for decorating a facade.

### Left:

Tara Arts Theatre  
Picture courtesy of Tara Theatre © Step Haiselden  
Architect: Aedas Arts Team, UK  
Material/method: Large Banyan tree motif produced using Verolith panels and finished with StoColor Maxicryl

### Top right:

St John's Wood, London  
Dwyer Property Development Group  
Architect: Smallwood Architects, London  
Material/method: Verolith cornices, window detailing, columns and arches, finished with StoColor Maxicryl and StoSilco

### Bottom right:

Multiple dwelling  
DE-Mühlheim am Main  
Architect: Wohnbau Mühlheim GmbH, DE-Mühlheim am Main  
Material/method: Sculptural shapes made of Verolith, milled, 3 coats of façade paint (smooth)







## Facades with profile

### Created using panels

Bevels, engravings and reliefs offer the facades a narrative significance. Soft and free-form shapes enhance the facade's power of expression and it can become the construction's messenger, playing with both light and shadow.

#### Left:

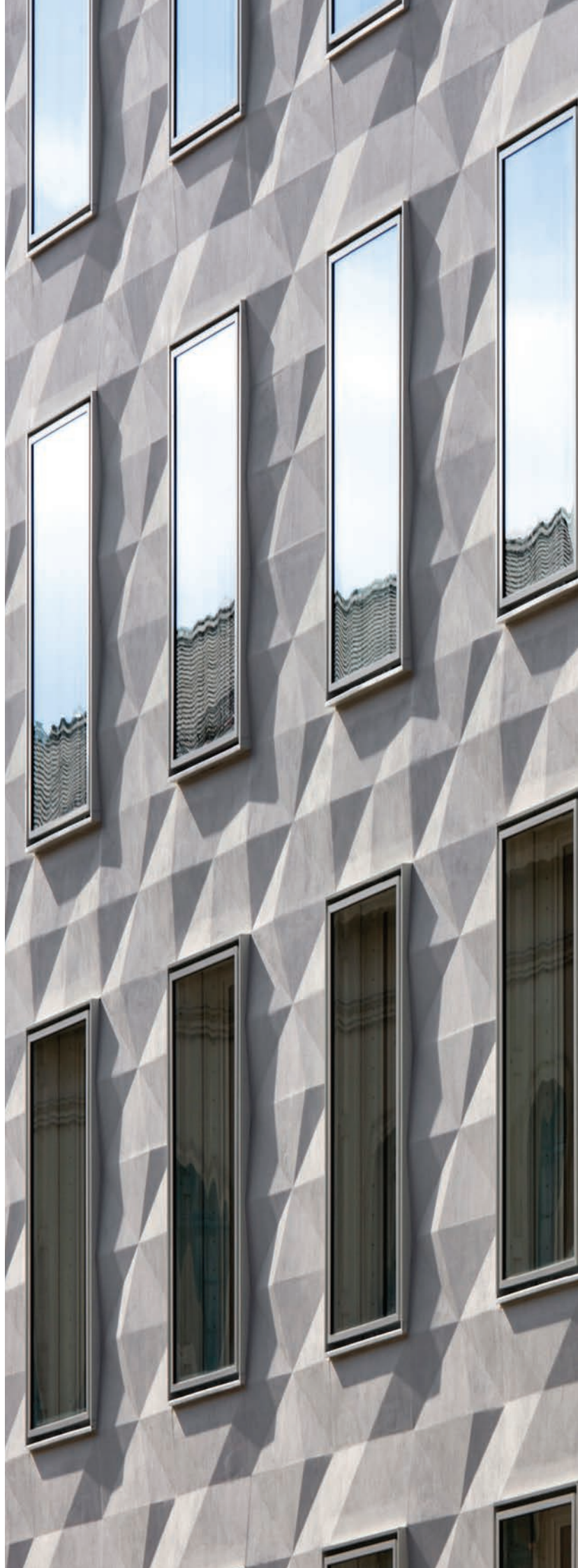
Landeskirchenamt (regional church office)  
DE-Munich  
Architect: Wandel Lorch WHL GmbH, DE-Saarbrücken  
Material/method: Panels made of Verolith, milled,  
substrate coating of primer, 2 coats of facade paint  
(fine)



You can find out more about  
the "Landeskirchenamt" project  
in our "best practice" film.

#### Right:

Hop House, London  
Dukelease Properties  
Architect: Brimelow M'Sweeney Architects, London  
Material/method: Striking curved frieze to the top  
floor featuring a design based on the growing and  
harvesting of hops





**Head Office**

**Sto Ltd.**

2 Gordon Avenue  
Hillington Park  
Glasgow  
G52 4TG

Tel +44 (0)141 892 8000  
Fax +44 (0)141 404 9001  
info.uk@sto.com  
www.sto.co.uk

Midlands Training & Distribution Centre

**Sto Ltd.**

Unit 700  
Catesby Park  
Kings Norton  
Birmingham  
B38 8SE

Tel +44 (0)141 892 8000  
info.uk@sto.com  
www.sto.co.uk

Ireland Office & Distribution Centre

**Sto Ltd.**

E7 Riverview Business Park  
Nangor Road  
Clondalkin  
Dublin 12

Tel +353 (0)1460 2305  
Fax +353 (0)1460 2455  
info.ie@sto.com  
www.sto.ie